

Product datasheet for **RG239975**

MCAF1 (ATF7IP) (NM_001286515) Human Tagged ORF Clone

Product data:

Product Type:	Expression Plasmids
Product Name:	MCAF1 (ATF7IP) (NM_001286515) Human Tagged ORF Clone
Tag:	TurboGFP
Symbol:	MCAF1
Synonyms:	AM; ATF-IP; MCAF; MCAF1; p621
Mammalian Cell Selection:	Neomycin
Vector:	pCMV6-AC-GFP (PS100010)
E. coli Selection:	Ampicillin (100 ug/mL)
ORF Nucleotide Sequence:	>RG239975 representing NM_001286515. Blue=ORF Red=Cloning site Green=Tag(s)

```
GCTCGTTTGTAGTGAACCGTCAGAATTTGTAAACGACTCACTATAGGGCGGCCGGGAATTCGTGACTG
GATCCGGTACCGAGGAGATCTGCCGCCGCGATCGCC
ATGGACAGTTTGAAGAACCCTCAGAAAAAGTCTTTAAGGCTCGAAAAACGATGAGAGTGAGTGATCGT
CAGCAACTTGAAGCAGTGTACAAGGTCAAAGAAGAACTGTTGAAAACGATGTCAAGCTGTTAAATGGC
AACCATGAAAATGGAGATTTGGACCCAACCTCACCTTTGGAAAACATGGATTACATTAAGACAAGGAA
GAGGTGAATGGCATTGAAGAGATTTGTTTTGATCCTGAAGGAAGTAAAGCAGAATGGAAGGAAACACCC
TGTATCCTAAGTGTTAATGTA AAAACAAGCAGGATGATGATTTAAATTGTGAACCTTTGTCTCCCAT
AATATACTCCAGAACCAGTCTCTAAACTGCCTGCTGAACGATTTCTGGTGATCCAGCCCTGGTGAT
CTGGATGCCGGAGATCCAGCCTCCGGAGTACTGGCCTCTGGTGATTCACCTCTGGTGATCCACCTCT
AGCGAGCCCTCCTCTAGTGATGCTGCCTCTGGTGATGCAACCTCTGGTGATGCCCTTCTGGTGATGTG
TCCCTGGTGATGCCACCTCTGGTGATGCCACTGCTGATGATCTCTCTCTGGTGATCCACCTCTAGT
GATCCCATCCCAGGTGAACCGGTCCCTGTTGAACCCATTTCTGGTGATTGTGCCGCTGATGATATAGCC
TCTAGTGAAAATACTTCTGTTGATCTGGCTTCTGGAGCACCAGCTTCCACTGATCCAGCCTCTGATGAT
CTGGCCTCTGGTGATCTATCCTCTAGTGAACCTGGCCTCTGATGATCTGGCACTGGTGAACCTGGCCTCT
GATGAGCTGACTTCTGAATCAACCTTTGATCGTACCTTTGAACCAAAGTCTGTACCAGTTTGTGAACCA
GTTCTGAAATTGACAATATAGAACCAAGTAGCAATAAAGATGATGATTTTCTTGAAAAAATGGAGCT
GATGAAAAATTAGAGCAAATTCAGAGTAAAGACTCATTGGATGAGAAAAATAAAGCTGATAATAATT
GATGCTAATGAAGAACTCTAGAAAACAGATGATACAACCTATTTGTTTCAGATCGACCTCCTGAAAATGAA
AAGAAGGTAGAGGAAGATATTATCACAGAGCTTGTCTTGGAGAAGATGCTATATCTAGCAGTATGGAA
ATTGACCAAGGTGAAAAGAATGAAGATGAACTTCTGCAGATCTGTAGAAACGATTAATGAAAATGTT
ATTGAAGATAACAAAAGTGAGAATATCTAGAAAATACAGACTCTATGGAGACAGATGAAATCATTCTC
ATTTTGGAAAAGCTTGCACCTTCTGAGGATGAACTTACTTGTCTTTCTAAAACATCTCTCCTTCCAATC
GATGAGACAAATCCAGATTTGGAAGAGAAAATGAAAAGTCTTTTGGTTCCACATCTAAACAAGAAAGT
AGTGAGAGTTTGCCAAAAGAAGCCTTTCTGGTCTCTCTGATGAAGAGGATATTTCCGGTGAAAAGAT
```



[View online >](#)

GAGTCTGAAGTTATATCGCAAAATGAAACGTGCTCTCCAGAAGTAGAAAGTAATGAAAAGGACAACAAA
 CCTGAGGAAGAAGAGCAAGTAATACATGAAGATGATGAAAGACCTTCTGAGAAAAATGAATTTTCTAGA
 CGAAAACGTTCTAAATCAGAAGACATGGACAATGTACAGTCTAAACGTCGTCGATATATGGAAGAAGAA
 TATGAGGCAGAATTTCAAGTAAAGATTACAGCCAAAGGAGACATTAACCAGAACTTCAAAGGTTATA
 CAGTGGTTGCTGGAAGAAAAATTGTGTGCGCTGCAGTGTCTGTATTTGATAAGACTTTGGCAGAATTG
 AAAACACGAGTGGAAAAGATTGAATGTAACAAGAGGCATAAAACAGTTCTCACTGAACACAGGCCAAG
 ATAGCCAGGTTAACCAACGCTTTGAAGCAGCCAAAGAAGATCTTAAGAAAAGACATGAACATCCACCC
 AACCCACAGTATCACCAGGAAAAACTGTAATGATGTCAACAGCAATAATAACATGTCTTACAGAAAT
 GCAGGCACAGTGAGACAGATGCTGGAGTCCAAAAGAAATGTAAGCGAGAGTGACCACCATCCTTTCAA
 ACTCCTGTGAATACAGTATCTTCAACCAATCTTGTCACTCCTCCAGCAGTTGTCAGTAGTCAACCTAAA
 TTGCAGACTCCAGTGACTTCGGGTTCCCTCACAGCAACGTGAGTTCTTCTGCACCCAATACAGCTACT
 GTAGTTGCTACTACTCAGGTGCCTAGTGGAAATCCCCAGCCTACAATCTCTTTACAGCCTTTGCCAGTG
 ATTTTGCATGTACCTGTTGCAGTATCCTCCAGCCTCAGTTCTACAGAGCCATCCAGGGACTTTGGTG
 ACTAATCAACCATCTGGCAATGTTGAATTCATTTCTGTGCAAAGCCACCTACAGTGAGTGGTCTTACC
 AAAATCCAGTATCCTTGCCATCCTTGCCAAATCCCACTAAACCAAAACAAGTTCCTTCTGTGCCAGT
 CCTAGTATTCAAAGGAACCTACTGCCAGTGTGCACCATTGGGAACAACACTTGCCTGTGCAGGCTGTT
 CCAACAGCACACTCTATTGTACAAGCCACAAGGACTTCTTTACCCACAGTGGGCCATCAGGACTCTAT
 AGTCCATCAACTAATCGAGGTCCTATACAGATGAAAATCCAATTTCTGCATTTAGTACTTCGTCTGCT
 GCAGAACAGAACAGCAATACCACCCCAAGAATTGAAAACCAGACAACAAAACAATAGATGCTTCTGTG
 AGTAAGAAAGCAGCTGATAGCACATCACAGTGTGGAAGCCACTGGCAGTGATTCAAGTGGTGTGATT
 GATCTCACAATGGATGATGAAGAGAGTGGAGCTTACAAGACCCCAAAAACTAAATCACACTCTGTA
 TCAACCATGAGTCTTCTCAGCCTGTGTACGACCATTGCAACCCATACAACCAGCACCCCTCTTCAA
 CCATCTGGGGTGCCAACAAGTGGACCATCTCAGACCACCATACTTACTACTACAGTCCAACCTACC
 GTGAATGTAACACATCGTCCAGTAACTCAGGTGACCACAAGACTCCCTGTACCAAGAGCTCCTGCAAC
 CACCAGGTGGTTTATACTAATCTTCTGACCACCAGCTCAGGCTCCCTTGCAGGAACTGTTATGCAG
 GCTCCTGCTGTTGCGCAGGTCAATCCCCAAAATAGTAAGAGATTTTTCTTGTATATGGCCCCAAGATA
 C

ACGCGTACGCGGCCGCTCGAG - GFP Tag - GTTTAAAC

Protein Sequence:

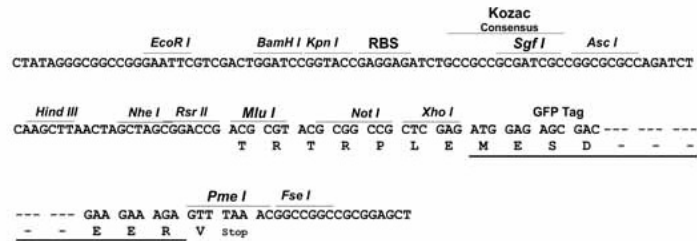
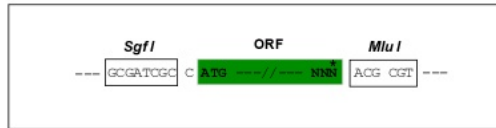
>Peptide sequence encoded by RG239975
 Blue=ORF Red=Cloning site Green=Tag(s)

MDSLEEPQKVKFKARKTMRVSDRQQLAVYKVKKEELLKTDVKLLNGNHENGDLDPSTPLENMDYIKDKE
 EVNGIEEICFDPEGSKAEWKETPCILSVNVKNKQDDDLNCEPLSPHNITPEPVSKLPAEPVSGDPAPGD
 LDAGDPASGVLASGDSTSGDPTSSPSSDAASGDATSGDAPSGDVSPGDATSGDATADDLSSGDPTSS
 DPIPGPEVPVEPISGDCAADDIASSEITSVDLASGAPASTDPASDDLASGDLSSSELASDDLATGELAS
 DELTSESTFDRTFEPKSVPVCEPVEIDNIEPSSNKDDDFLEKNGADEKLEQIQSKDSLDEKNKADNNI
 DANEETLETDDTTICSDRPPENEKKVEEDII TELALGEDAIISSSMEIDQGEKNEDETSADLVETINENV
 IEDNKSENILENTDSMETDEIIPILEKLPSEDELTCFSKTSLLPIDETNPDLEEKMESSFGSPSKQES
 SESLPKEAFLVLSDEEDISGEKDESEVISQNETCSPEVESNEKDNKPEEEEEQVIHEDDERPSEKNEFSR
 RKRSKSEMDNVQSKRRRYMEEEYEAQVQKITAKGDIQKLVQVILWLEEKLCALQCAVDFDKTLAEL
 KTRVEKIECNKRHKTVLTELQAKIARLTKRFEAAKEDLKKRHEHPPNPPVSPGKTVNDVNSNNMSYRN
 AGTVRQMLESKRNVSESAPPSFQTPVNTVSSNLTVPVAVVSSQPKLQTPVTSGLTATSVLPAANTAT
 VVATTQVPSGNPQPTISLQPLPVLHVPVAVSSQPQLLQSHPGTLVTNQPSGNVEFISVQSPPTVSGLT
 KNPVSLPSLPNPKPNNVSPVSPSIQRNPTASAAPLGTTLAVQAVPTAHSIVQATRTSLPTVPSGLY
 SPSTNRGPIQMKIPI SAFSTSSAAEQNSNTTPRIENQTNKIDASVSKAADSTSQCCKATGSDSSGVI
 DLTMDDEESGASQDPKLNHTPVSTMSSQPVSRLQPIQPAPPLQPSGVPTSGPSQTTIHLLPTAFTT
 VNVTHRPVTQVTRLVPRAPANHQVVYTTLPAPPAQAPLRGTVMQAPAVRQVNPQNSKRFFLYMAPRY
 M
 TRTRPLEMESDESGLPAMEIECRITGTLNGVEFELVGGGEGTPEQGRMTNKMSTKGALTFSPYLLSHV
 MGYGFYHFGTYPSGYENPFLHAINNGGYNTRIEKYEDGGVLHVSFSYRYEAGRVIGDFKVMGTGFPED
 SVIFTDKIIIRSNATVEHLHPMGDNDLDGSTRFSLRDGGYSSVVDSSHMHFKSAIHPSILQNGGPMFA
 FRRVEEDHSNTELGIVEYQHAFKTPDADAGEERV

Restriction Sites: SgfI-MluI

Cloning Scheme:

Cloning sites used for ORF Shuttling:

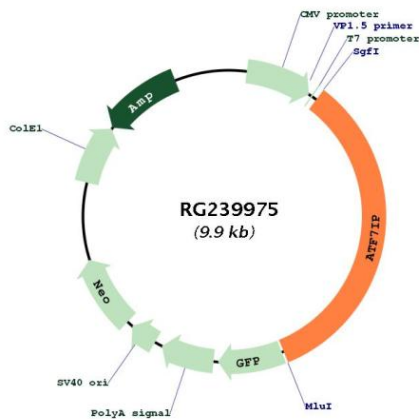


ACCN: NM_001286515

ORF Size: 3315 bp

OTI Disclaimer:	The molecular sequence of this clone aligns with the gene accession number as a point of reference only. However, individual transcript sequences of the same gene can differ through naturally occurring variations (e.g. polymorphisms), each with its own valid existence. This clone is substantially in agreement with the reference, but a complete review of all prevailing variants is recommended prior to use. More info
OTI Annotation:	This clone was engineered to express the complete ORF with an expression tag. Expression varies depending on the nature of the gene.
Components:	The ORF clone is ion-exchange column purified and shipped in a 2D barcoded Matrix tube containing 10ug of transfection-ready, dried plasmid DNA (reconstitute with 100 ul of water).
RefSeq:	NM_001286515.2
RefSeq Size:	4413 bp
RefSeq ORF:	3318 bp
Locus ID:	55729
UniProt ID:	Q6VMQ6
Cytogenetics:	12p13.1
Protein Families:	Transcription Factors
MW:	119.1 kDa
Gene Summary:	ATF7IP is a multifunctional nuclear protein that associates with heterochromatin. It can act as a transcriptional coactivator or corepressor depending upon its binding partners (summary by Liu et al., 2009 [PubMed 19106100]).[supplied by OMIM, Nov 2010]

Product images:



Circular map for RG239975