

Product datasheet for **RG239908**

BLM (NM_001287248) Human Tagged ORF Clone

Product data:

Product Type:	Expression Plasmids
Product Name:	BLM (NM_001287248) Human Tagged ORF Clone
Tag:	TurboGFP
Symbol:	BLM
Synonyms:	BS; MGRISCE1; RECQ2; RECQL2; RECQL3
Mammalian Cell Selection:	Neomycin
Vector:	pCMV6-AC-GFP (PS100010)
E. coli Selection:	Ampicillin (100 ug/mL)
ORF Nucleotide Sequence:	>RG239908 representing NM_001287248. Blue=ORF Red=Cloning site Green=Tag(s)

```

GTGAACCGTCAGAATTTTGTAAATACGACTCACTATAGGGCGGCCGGAATTCGTGACTGGATCCGGTA
CCGAGGAGATCTGCCGCCGCGATCGCCGGCGCGCCC
ATGGAGCAGCATCTGTAATTAATTGATACTATTCTGATGATAAACTGAACTTTTGGATTGTGGGAAC
GAACTGCTTCAGCAGCGGAACATAAGAAGGAACTTCTAACGGAAGTAGATTTTAAATAAAAGTGATGCC
AGTCTTCTTGGCTCATTGTGGAGATACAGGCTGATTCACTTGATGGCCCTATGGAGGGTGATTCCTGC
CCTACAGGGAATTCTATGAAGGAGTTAAATTTTACACCTTCCCTCAAATTCGTTTCTCTGGGGAC
TGTTTACTGACTACCACCCTAGGAAAGACAGGATTCTCTGCCACCAGGAAGAATCTTTTGAAGGCCCT
TTATTCATAACCCATTTACAGAAGTCCTTGTAAAGTAGCAACTGGGCTGAAACACCAAGACTAGGAAAA
AAAAATGAAAGCTCTTATTTCCAGGAAATGTTCTCACAAGCACTGCTGTGAAAGATCAGAATAAACAT
ACTGCTCAATAAATGACTTAGAAAAGAGAAACCAACCTTCTATGATATTGATAATTTTACATAGAT
GACTTTGATGATGATGACTGGGAAGACATAATGCATAATTTAGCAGCCAGCAAACTTCCACAGCT
GCCTATCAACCCATCAAGGAAGTCGGCCAATTAATCAGTATCAGAAAGACTTTCCTCAGCCAAGACA
GACTGTCTTCCAGTGTCATCTACTGCTCAAAATATAAACTTCTCAGAGTCAATTCAGAATTATACTGAC
AAGTCAGCACAAAATTTAGCATCCAGAAATCTGAAACATGAGCGTTTCCAAGTCTTAGTTTTCTCAT
ACAAAGGAAATGATGAAGATTTTCAAAAAAATTTGGCCTGCATAATTTAGAACTAATCAGCTAGAG
GCGATCAATGCTGCACTGCTGGTGAAGACTGTTTTATCCTGATGCCACTGGAGGTGGTAAGAGTTTG
TGTTACCAGTCCCTGCCTGTGTTTTCTCCTGGGTCACTGTTGTCAATTTCTCCCTTGAGATCACTTATC
GTAGATCAAGTCCAAAAGCTGACTTCTTGGATATTCCAGCTACATATCTGACAGGTGATAAGACTGAC
TCAGAAGCTACAAATATTTACCTCCAGTTATCAAAAAAGACCAATCATAAACTTCTATATGCTACT
CCAGAAAAGATCTGTGCAAGTAACAGACTCATTCTACTCTGGAGAATCTCTATGAGAGGAAGCTTTG
GCACGTTTTGTTATTGATGAAGCACATTGTGTCAGTCAGTGGGGACATGATTTTCGTCAAGATTACAAA
AGAATGAATATGCTTCGCCAGAAGTTTCTTCTGTTCCGGTGATGGCTCTACGGCCACAGCTAATCCC
AGGGTACAGAAGGACATCTGACTCAGTGAAGATTCTCAGACCTCAGGTGTTTAGCATGAGCTTTAAC
AGACATAATCTGAAATACTATGTATTACGAAAAAGCCTAAAAAGGTGGCATTGATTGCCTAGAATGG

```



[View online >](#)

ATCAGAAAGCACCACCCATATGATTTCAGGGATAATTTACTGCCTCTCCAGGCGAGAATGTGACACCATG
 GCTGACACGTTACAGAGAGATGGGCTCGCTGCTTGTACCATGCTGGCCTCAGTGATTCTGCCAGA
 GATGAAGTGCAGCAGAAGTGGATTAATCAGGATGGCTGTCAGGTTATCTGTGCTACAATTGCATTGGGA
 ATGGGGATTGACAAACCGGACGTGCGATTTGTGATTTCATGCATCTCTCCCTAAATCTGTGGAGGGTTAC
 TACCAAGAATCTGGCAGAGCTGGAAGAGATGGGAAATATCTCACTGCCTGCTTTTCTATACCTATCAT
 GATGTGACCAGACTGAAAAGACTTATAATGATGGAAAAAGATGAAAACCATCATACAAGAGAACTCAC
 TTCAATAATTTGTATAGCATGGTACATTACTGTGAAAAATAACCGAATGCAGGAGAATACAGCTTTTG
 GCCTACTTTGGTAAAAATGGATTTAATCCTGATTTTGTAAAGAAACACCCAGATGTTTCTGTGATAAT
 TGCTGTAAAAACAAGGATTATAAAAAAAGAGATGTGACTGACGATGTGAAAAGTATTGTAAGATTTGTT
 CAAGAACATAGTTCATCACAAGGAATGAGAAAATAAAAACATGTAGGTCCTTCTGGAAGATTTACTATG
 AATATGCTGGTCGACATTTTCTGGGGAGTAAGAGTGCAAAAAATCCAGTCAGGTATATTTGGAAAAGGA
 TCTGCTTATTCACGACACAATGCCGAAAGACTTTTTAAAAAGCTGATACTTGACAAGATTTGGATGAA
 GACTTATATCAATGCCAATGACCAGGCGATCGCTTATGTGATGCTCGGAAATAAAGCCCAAAGTGA
 CTAATGGCAATTTAAAGGTAGACTTTATGAAACAGAAAATCCAGCAGTGTGAAAAACAAAAAGCG
 TTAGTAGCAAAAGTGTCTCAGAGGAAGAGATGGTTAAAAAATGTCTTGAGAAGTTACAGAAGTCTGC
 AAATCTCTGGGGAAGTTTTTGGTGTCCATTACTCAATATTTTTAATACCGTCACTCTCAAGAAGCTT
 GCAGAATCTTTATCTTCTGATCCTGAGGTTTTGCTTCAAATTGATGGTGTACTGAAGACAACTGGAA
 AAATATGGTGGGAAAGTGATTTTCAGTATTACAGAAATACTCTGAATGGACATCGCCAGCTGAAGACAGT
 TCCCCAGGGATAAGCCTGTCCAGCAGCAGAGGCCCCGGAAGAAGTGCCGCTGAGGAGCTCGACGAGGAA
 ATACCCGTATCTCCACTACTTTGCAAGTAAAACCAGAAATGAAAGGAAGGAAAAAGATGCCAGCC
 TCCCAAAGGTCTAAGAGGAGAAAACTGCTTCCAGTGGTTCCAAGGCAAAGGGGGGGTCTGCCACATGT
 AGAAAGATATCTCCAAAACGAAATCCTCCAGCATCATTGGATCCAGTTCAGCCTCACATACTTCTCAA
 GCGACATCAGGAGCCAATAGCAAATGGGGATTATGGTCCACCGAAGCCTATAAATAGACCGTTTCTT
 AAGCCTTCATATGCATTCTCA

ACGCGTACGCGGCCGCTCGAG - GFP Tag - GTTTAAAC

Protein Sequence:

>Peptide sequence encoded by RG239908
 Blue=ORF Red=Cloning site Green=Tag(s)

MEHICKLIDTIPDDKLKLLDCGNELLQQRNIRRKLLTEVDFNKSDASLLGSLWRYRPDSLDPMEGDS
 PTGNMSEKELNFSHLPNSVSPGDCLLTTTLGKTGFSATRNKLFERPLFNTHLQKSFVSSNWAETPRLGK
 KNESSYFPGNVLSTAVKDQNKHTASINDLERETQPSYDIDNFDIDDFDDDDWEDIMHNLAASKSSTA
 AYQPIKEGRPIKSVSERLSSAKTDCLPVSSTAQNINSESIQNYTDKSAQNLASRNKHERFQSLSFPH
 TKEMMKIFHKKFGLHNFRTNQLAINAALLGEDCFILMPTGGGKSLCYQLPACVSPGVTVVISPRLSLI
 VDQVQKL TSLDIPATYL TGDKTDSEATNIYLQLSKKDP I IKLL YVTPEKICASNRLISTLENLYERKLL
 ARFVIDEAHCVSQWGHDFRQDYKRMNMLRQKFPSVPMALTATANPRVQKDILTQLKILRPQVFSMSFN
 RHNLYYYVLPKPKKVAFDLEWIRKHHPYDSGIYCLSRRECDTMDTLQRDGLAALAYHAGLSDSAR
 DEVQKWINQDGCQVICATIAFGMGIDKPDVRFVIHASLPKSVGGYQESGRAGRIDGEISHCLLFYTYH
 DVTRLKRLIMMEKDGNNHTRETFNLYSMVHYCENITECRRIQLLAYFGENGFNPDFCKKHPDVSCDN
 CCKTKDYKTRDVTDDVKSIVRFVQEHSSSQGMRNIKHVGPSGRFTMMLVDIFLGSKSAKIQSGIFGKG
 SAYSRHNAERLFKLLILDKILDEDLYINANDQAIAYVMLGNKAQTVLNGNLKVDFMETENSSSVKQKA
 LVAKVSQREEMVKKCLGELTEVCKSLGKVFVHYFNIFNTVTLKLAESLSSDPEVLLQIDGVTEDKLE
 KYGAEVISVLQKYEWTSPAEDSSPGISLSSSRGPRGSAEELDEEIPVSSHYFASKTRNERKRRKMPA
 SQRKRRKTASSGSKAKGGSATCRKISSKTKSSSIIGSSASHTSQATSGANSKLGIMAPPKPINRPL
 KPSYAFS

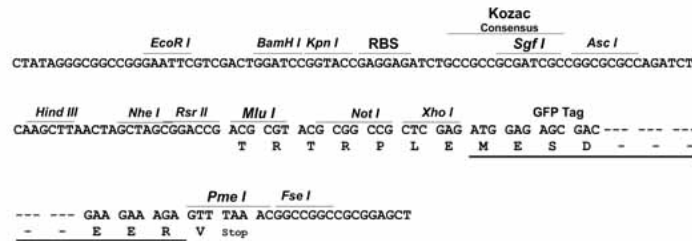
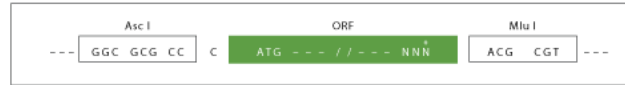
TRTRPLEMESDESGLPAMEIECRITGTLNGVEFELVGGEGTPEQGRMTNKMSTKGALTFSPYLLSHV
 MGYGFYHFGTYPSGYENPFLHAINNGGYTNTRIEKYEDGGVLHVSFSYRYEAGRVIGDFKVMGTGFPE
 SVIFTDKIIRSNATVEHLHPMGDNDLDGSFTRTFSLRDGGYSSVVDSHMHFKSAIHPISILQNGGPMFA
 FRRVEEDHSNTELGIVEYQHAFKTPDADAGEERV

Restriction Sites:

AscI-MluI

Cloning Scheme:

Cloning sites used for ORF Shuttling:



ACCN: NM_001287248

ORF Size: 3126 bp

OTI Disclaimer: The molecular sequence of this clone aligns with the gene accession number as a point of reference only. However, individual transcript sequences of the same gene can differ through naturally occurring variations (e.g. polymorphisms), each with its own valid existence. This clone is substantially in agreement with the reference, but a complete review of all prevailing variants is recommended prior to use. [More info](#)

OTI Annotation: This clone was engineered to express the complete ORF with an expression tag. Expression varies depending on the nature of the gene.

Components: The ORF clone is ion-exchange column purified and shipped in a 2D barcoded Matrix tube containing 10ug of transfection-ready, dried plasmid DNA (reconstitute with 100 ul of water).

RefSeq: [NM_001287248.2](#)

RefSeq Size: 4721 bp

RefSeq ORF: 3129 bp

Locus ID: 641

UniProt ID: [P54132](#)

Cytogenetics: 15q26.1

Protein Families: Druggable Genome, Stem cell - Pluripotency

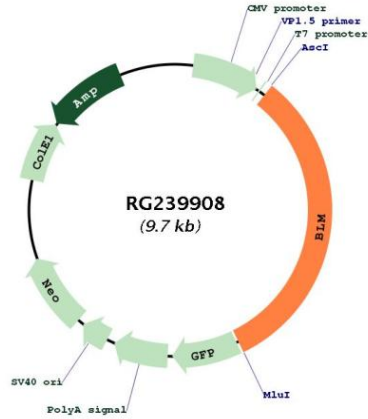
Protein Pathways: Homologous recombination

MW: 117.5 kDa

Gene Summary:

The Bloom syndrome is an autosomal recessive disorder characterized by growth deficiency, microcephaly and immunodeficiency among others. It is caused by homozygous or compound heterozygous mutation in the gene encoding DNA helicase RecQ protein on chromosome 15q26. This Bloom-associated helicase unwinds a variety of DNA substrates including Holliday junction, and is involved in several pathways contributing to the maintenance of genome stability. Identification of pathogenic Bloom variants is required for heterozygote testing in at-risk families. [provided by RefSeq, May 2020]

Product images:



Circular map for RG239908