

Product datasheet for **RG239898**

ARMC5 (NM_001288767) Human Tagged ORF Clone

Product data:

Product Type:	Expression Plasmids
Product Name:	ARMC5 (NM_001288767) Human Tagged ORF Clone
Tag:	TurboGFP
Symbol:	ARMC5
Synonyms:	AIMAH2
Mammalian Cell Selection:	Neomycin
Vector:	pCMV6-AC-GFP (PS100010)
E. coli Selection:	Ampicillin (100 ug/mL)



[View online »](#)

ORF Nucleotide Sequence:

>RG239898 representing NM_001288767.
 Blue=ORF Red=Cloning site Green=Tag(s)

```

GCTCGTTTAGTGAACCGTCAGAATTTTGTAAACGACTCACTATAGGGCGGCCGGGAATTCGTGCACTG
GATCCGGTACCGAGGAGATCTGCCGCCCGGATCGCC
ATGGTCACTACCGGGCAGGAGTACGGCTTTTACCCGGTGTGTACCCAGTGGTGCTTAACCAGATCAGA
GCCACATCGGAAGCTTCTGCCATAACCCGGACAACGATGCCAGCTCCTGAGCTCACGAGCACGTCCAGA
GCGGAGGACACTCGGGACACCGGGTCCAGCTCCGAAAACGAAAATTCCACAAGCCGTCCTACTAGG
AAGCGGCAGCGAACGTTCTCGTTCGCTCCCTGGGATCAGCGGCAGAGAAGCGGGCGGAGTCTGAGGCC
CGAGCCAAGATGGCGGTGCGAAGCCAACCCTCACGGACTCGCTCTCGTTCTGCCTCGCGCAGCTCGCG
GCGGGCGCCGGGAGGCTCTGGGTGGGAAAAGGACCCAGCGACCAACGAGACACCCCTGAGCCGCGCG
CTCCTAGCCCTCCGCACGCGCCACATCAAGGCAGCGGGGGAATCGAGCGCTTCCGGGCACGCGGGGG
CTCCGCCCCCTACTCGCGCTGCTACGGCGAGCGGTGCAGCGGTTCCGCCCCGTCACAGGCAGGCCCC
GGCTCCGCCCCCTCGTCGGCCGCTCGGGAGCTTCTAGCCCCGCCCGCGTCGGGCCCGCCCTCC
GCTGTGTCGTCTAGTCTACGCCGCCAGTGCCTGCGCAAGACGCTGGACTTGGCGCTCAGCATC
CTAGCCGATTGCTGTACGGAAGGGCGTGCCGGACCGAAGTGCGCAGACTCGGAGGCATACTCCCTTTG
GTGACCATTCTTCAAGTGCATGAAGACAGACAGCATCCAGAACCAGAACGGCCCGTGCCTGGGGAACCTA
GCCATGGAACCTGAGAGCTGTGGGGACATCCACTGTGCTGGTGTCTTCCCTGCTTGTGGAGAGCCTG
ACAGCCTGCCAGGACTCGCAGTGCTACAGAGCGTGGTGCCTGCCCTCCGTAACCTGGCAGACTCACCC
CAGCACCCCTGGCCTTGGCACAGCAGGGAGCAGTGCCTCCGCTGGCCGAGCTCCTGGCCACTGCCCA
GATGCTGCACTGACCTTAGCCCTCGTCCGTGCCCTCCTGGAACCTCAGCCGAGGCTGCTCCCGGCCGTG
GCTGAGCAGCTAAGTCTGGTGGGGATTGGGCCCACTCGTGTGCCAGGGCTGATTCCGCTGCAGTGGGC
AATGCTGGTGGCGTGGAGGTGCTGGTAGATGAGCTCCGGCAGCGCCGGATCCTAATGGAGCTAGCCCA
ACCTCCAGCAGCCCTGGTGGGGCTGTGTGCCTCCTATGTCGTGAGGCCATCAACCGGCCCGACTG
CGGGATGCTGGTGGCTTGGATCTACTGATGGGCCTGCTGCGGGACCTCGTGCAAGCGCATGGCACCCCT
CGTATTGTGGCTGCCCTTGTGGGTTTCTGTATGACACTGGGGCCCTGGGCCGGCTGCAGGCTCTGGGA
CTTGTGCCTCTCCTGGCTGGCAGCTGTGTGGTGGGCTGGTGGAGGGAAGAAGAGGGAAGAGAAGCT
GCTTCTGGGACTTCTGAGGAGAGGACCCCTGAGCGGGCACAGGGTGGAGCTCCGGAGCCTCAGG
TCGTGGCTGATCTCCGAGGGCTATGCCACAGGCCCTGATGACATCTCCCCGACTGGTCTCCTGAGCAG
TGTCGCCCGGAGCCATGGAGCCGGCCAGCCCCCGCCGACCTCGCTGCGGGCACCACGCACC
CAACGCACTCCGGCCCGCAGCCCCGCGCCGACATCGAGGAGCCTTGGGACGCGAAGGGCCAGCCCTG
CTGCTGCTGTGCGCTTTTCCCAGGCCCTGACCCAAGTGGGGCACTTGTGACCGGCCCGCGCTGTAC
GGCCTGTGACCTATGTGACCGGCACCCGGGCCCGCCAGCCACGTCGACTGCGCATTCTGTACGC
CTCACCTGCAACCCTGCCTGCCTCGAGGCTTCTGTGCGCAGTATGGCGCGGCGCTGCTGCGGGCCTGG
CTGGTGTGGGGTGGCGCTGACGATTGGCCGGCACCACGTGCCCGGCCACTCTCCACAGCCGGCAC
CGAGAGCTGGGGAGAGGCTACTGCAGAACCTGACGGTTACGGCTGAGTCGCCCTTTGGGGTGGGGCC
CTGACGCACCTGCTCTCTGGGAGCCCTGAGGACCGAGTGGCTGCGCGCTGACCCTGCCCTTCTATC
TGCCGGAAGCCCTCTCTGTGGCGCGGCTGCTTCTGGAGCAGGGTGGTCTCCGGCTCCTCTTGGGCG
CTGACCCGGCCGGCCACACCCGCTTCTCTCTTTTCCCGCGGACTCCCTTCTGCTCCTCAAGAC
CTGGTGTCTCCACTGTGAGCCAGCTGTCCACAGGCAGTCCCATGGACCTAGACTCACCTTCCCT
TGCTCTATGAACCTCTGCTGGGCCAGCCCTGTCCAGCTCCCGACTGCACTTCTGCTGGACTCA
GGCCTCCAGCTCCCTGCCAGCGAGCGGCTCAGCCACCCCTCCCTTTCTCCGGCCCTGCTGTCA
GGCAGCTTTCAGAAGCCAGATGGACCTGGTCCCTGCGAGGTCTGTCGCTGGTGCAGCCTGGCCT
GTCCTGCATCATTTGCATGGTTGTGGGGGTGGGGCTGCCCTGGGGCCCGTCCCGCCAGGCCAG
CCCCTGCTGGGTTAGAGGCCGAGGAGGACTGGAGGCTGCTGGCCGTTTCTACTGCTGGGCTGGAG
GAGGAGCTGGAAGAGGCCGTGGGCCGATCCACCTGGGACCCAGGGTGGCCCGAGTCACTGGGTGAG
GTGTTCCGCTGGGCCGGCCCGGCTGGCTGCCACTGTGCCCGTGGACTGGGGTCAAGAGCAGTGC
CCGAGGAAGCGGGTCTGGCCCTGGTGGGGCTGTGGAGGCAGCAGGTGAAGAGGCAGGGCCCTGACG
GAGGCTTGTGCTGGTGTGGGATTGAGTTGGGGCAAGGGTCCCTGCC
ACGCGTACGCGGCCGCTCGAG – GFP Tag – GTTTAAAC
  
```

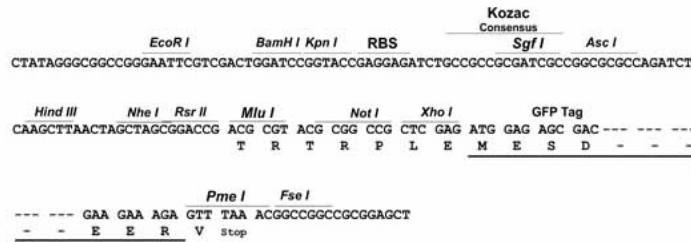
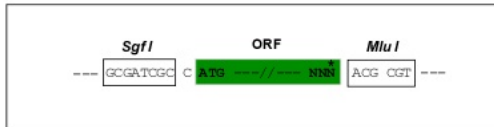
Protein Sequence: >Peptide sequence encoded by RG239898
 Blue=ORF Red=Cloning site Green=Tag(s)

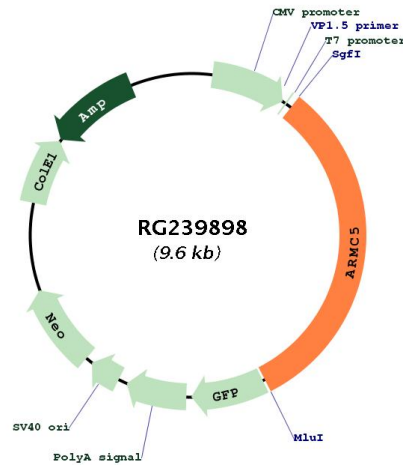
MVTLGAGVRLFTGVYPVVLNQIRATSEASAITRRTTMPAPELTSTSRAEDTRDTGVQLRKRKIPQARHSR
 KRQRTFSFRSLGSAARSGAESEARAKMAAAKPTLTDLSFCLAQLAAAAGEALGGEKDPATNETPLSRA
 LLALRTRHIKAAGGIERFRARGGLRPLLALLRRAAAGSAPSQAGPGSAPSSAASGASSPAPASGPAPS
 AVSSSSPTPPVRLRKTLDLALSILADCCTEGACRTEVRRLLGGILPLVTILQCMKTDSIQNRTARALGNL
 AMEPESCGDIHCAGAVPLLVESLTACQDSQCLQSVVRALRNLADSPQHRLALAQQGAVRPLAELLATAP
 DAALTLALVRALLELSRGC SRACAEQLSLGGGLGPLVSLASHPKRAVREGTILILANLCAQGLIRPALG
 NAGGVEVLVDELQRDRDPNGASPTSQQPLVRAVCLLCREAINRRLRDAGGLDLLMGLLRDPRASAWHP
 RIVAALVGFLYDTGALGRLQALGLVPLLAGQLCGEAGEEEEEEGREASWDFPEERTPERAQGGSFRLSR
 SWLI SEGYATGPDDI SPDWSPEQCPEPEMESPAPTPTSLRAPRTQRTPGRSPAAAIEEPWGREGPAL
 LLLSRFSQAPDPGALVTGPALYGLLTYVTGAPGPPSPRALRILSRLTCNPACLEAFVRSYGAALLRAW
 LVLGVAPDDWPAPRARPTLHSRHRELGERLLQNLTVQAESPFGV GALTHLLLSGSPEDRVACALTL PFI
 CRKPSLWRRLLLEQGLRLLLAALTRPAPHPLFLFFAADSLSCLQDLVSPTVSPAVPQAVPMDLDS P SP
 CLYEPLLGAPVPAPDLHFLLDLGLQ LPAQRAASATASPFFRALLSGSF AEAQMDLVPLRGLSPGAAWP
 VLHHLHGCRGCGAALGPVPPGQPLL GSEAEAELEAAGRFLLPGL EEELEAVGR IHLGPQGGPESVGE
 VFRLGRPRLAAHRCARWTLGSEQCPRKRGLALVGLVEAAGEEAGPLTEALLAVVMGIELGARVPA
 TRTRPLEMESDESGLPAMEIECRITGTLNGVEFELVGGEGTPEQGRMTNKMKSTKGALTFSPYLLSHV
 MGYGFYHFGTYP SGYENPFLHAINNGGYNTRIEKYEDGGVLHVSFSYRYEAGRVIGDFKVMGTGFPED
 SVIFTDKIIRSNATVEHLHPMGDNDLDGSFTRTFSLRDGGYSSVVD SHMHFKSAIHPSILQNGGPMFA
 FRRVEEDHSNTELGIVEYQHAFKTPDADAGEERV

Restriction Sites: SgfI-MluI

Cloning Scheme:

Cloning sites used for ORF Shutting:



Plasmid Map:


ACCN: NM_001288767

ORF Size: 3090 bp

OTI Disclaimer: The molecular sequence of this clone aligns with the gene accession number as a point of reference only. However, individual transcript sequences of the same gene can differ through naturally occurring variations (e.g. polymorphisms), each with its own valid existence. This clone is substantially in agreement with the reference, but a complete review of all prevailing variants is recommended prior to use. [More info](#)

OTI Annotation: This clone was engineered to express the complete ORF with an expression tag. Expression varies depending on the nature of the gene.

Components: The ORF clone is ion-exchange column purified and shipped in a 2D barcoded Matrix tube containing 10ug of transfection-ready, dried plasmid DNA (reconstitute with 100 ul of water).

RefSeq: [NM_001288767.2](#)

RefSeq Size: 3529 bp

RefSeq ORF: 3093 bp

Locus ID: 79798

UniProt ID: [Q96C12](#)

Cytogenetics: 16p11.2

MW: 108.5 kDa

Gene Summary:

This gene encodes a member of the ARM (armadillo/beta-catenin-like repeat) superfamily. The ARM repeat is a tandemly repeated sequence motif with approximately 40 amino acid long. This repeat is implicated in mediating protein-protein interactions. The encoded protein contains seven ARM repeats. Mutations in this gene are associated with primary bilateral macronodular adrenal hyperplasia, which is also known as ACTH-independent macronodular adrenal hyperplasia 2. Alternatively spliced transcript variants encoding different isoforms have been found for this gene. [provided by RefSeq, Sep 2014]