

Product datasheet for **RG239895**

ZCWCC1 (MORC2) (NM_001303257) Human Tagged ORF Clone

Product data:

Product Type:	Expression Plasmids
Product Name:	ZCWCC1 (MORC2) (NM_001303257) Human Tagged ORF Clone
Tag:	TurboGFP
Symbol:	ZCWCC1
Synonyms:	CMT2Z; DIGFAN; ZCW3; ZCWCC1
Mammalian Cell Selection:	Neomycin
Vector:	pCMV6-AC-GFP (PS100010)
E. coli Selection:	Ampicillin (100 ug/mL)



[View online »](#)

ORF Nucleotide Sequence:

>RG239895 representing NM_001303257.
 Blue=ORF Red=Cloning site Green=Tag(s)

```

GCTCGTTTAGTGAACCGTCAGAATTTTGTAAACGACTCACTATAGGGCGGCCGGGAATTCGTGCGACTG
GATCCGGTACCGAGGAGATCTGCCGCCCGCATCGCC
ATGGCTTTCACAAATTACAGCAGTCTGAATCGAGCTCAGCTAACCTTTGAATATCTGCACACAAATTCA
ACCCTCACGAATTCCTGTTGGTGCCCTTGCTGAAGTGGTTGATAATGCAAGAGATGCTGATGCCACC
AGAATAGATATTTATGCAGAAAGACGAGAGGACCTTCGAGGAGGATTTATGCTTTGCTTTTTGGATGAT
GGAGCAGGAATGGATCCAAGTGTGCTGCCAGTGTGATCCAGTTTGGGAAGTCGGCCAAGCGAACACCT
GAGTCTACTCAGATTGGGCAGTACGGGAATGGGTTAAATCGGGCTCAATGCGCATTGGGAAGGATTTT
ATCCTGTTACCAAGAAGGAAGACACCATGACCTGCCTCTTCTGTCTCGCACGTTTCATGAGGAAGAA
GGCATTGATGAAGTATAGTCCCCTGCCACCTGGAATGCTCGGACCCGGGAACCTGTCACAGACAAT
GTAGAGAAATTTGCCATTGAGACAGAACTCATCTATAAGTACTCTCCATTCGCCTGAGGAGGAAGTG
ATGACCCAGTTTATGAAGATTCCTGGGACAGCGGAACATTGGTATCATCTTCAATCTCAAACCTCATG
GATAATGGAGAGCCAGAAGTACAGATAATCTCAAATCCAAGAGATATCCAGATGGCAGAGACGTCACCA
GAGGGCACGAAGCCAGAGCGGGCTCGTTCCGTGCCTATGCCGCTGTGCTCTATATTGATCCCCGGATG
AGGATCTTCATCCATGGGCACAAGGTGCAGACCAAGAGGCTCTCCTGCTGCCTGTACAAGCCAGGATG
TACAAGTACACGTCAAGCCGTTTCAAGACCCGTGCGGAGCAGGAGGTGAAGAAAGCAGAGCACGTAGCA
AGGATTGCTGAAGAGAAGGCGCGGGAGGCGAGAGCAAAGCTCGGACATTAGAAGTACGCCATAGGTGGA
GACCTCACGCGGGACTCCAGGGTGTGTTGCGACAGGTCCAGAACAGAGCCATCACTCTGCGCAGAGAA
GCCGATGTCAAGAAGAGGATCAAGGAGGCCAAGCAGCGAGCACTTAAAGAACCTAAGGAAGTGAATTTT
GTTTTGGTGTCAACATTGAACACCGGGATCTGGATGGCATGTTTCATCTACAAGTGTAGCCGACTGATC
AAAATGTATGAGAAAGTGGGCCACAGCTGGAAGGGGGCATGGCATGTGGCGGGTTGTTGGGGTTGTT
GATGTGCCCTACCTGGTCTGGAGCCTACACACAACAAACAGGACTTTGCTGATGCCAAGGAGTACCGG
CACCTGCTCCGAGCAATGGGGGAGCACCTGGCGCAGTATTGGAAGGATATTGCCATCGCCAGAGGGGA
ATCATCAAGTTCTGGGATGAGTTTGGCTACCTCTCTGCCAACTGGAACCAGCCCCATCCAGTGAGCTG
CGTTACAAACGCCGAGAGCTATGGAAATCCCCACCACCTCCAGTGCATTTGTGTCTGAAATGGAGA
ACCCTCCCCTCCAGCTGAGTTCTGTGGAAAAGATTACCCTGACACCTGGGTTTGTCTCCATGAACCT
GATCCTGAACAGGACCGGTGTGAGGCTTCTGAACAAAAGCAGAAGTTCCCTGGGAACATTCAGAAAG
GACATGAAGACGCAGGAAGAGAAGCAGAAACAAGTACAGAGAAAATTCGCCAGCAGCAGGAGAAGCTG
GAGGCCCTTCAGAAAACACACCCATCCGCTCCAAGCAGACCTGAAGAAATGCCCTTGAAGTGACC
ACCAGACCTTCCACTGAGGAACCTGTGCGTAGACCTCAGCGTCCCGGTGCCCCCTTTACTGTGTG
ATCAGGAACGCCCCAGCAGACCCCTTCTTTGCCAACTCCTAGACCAGCCAGCCAGCCCCGAAAGGCT
CCTGTATCAGCAGTACCCAAAGCTCCCTGCTTTGGCAGCCCGGAGGAGGCCAGCACATCTAGGCTG
CTCCAGCCACCTGAGGCACCCCGAAAGCCTGCCAACACTCTCGTCAAGACTGCATCCCGACCTGCCCT
CTGGTGCAGCAACTGTACCATCTTTACTGCCAACTCCAAGAGCCCTCGGGAGGTTCTTCTCCAAA
GTCATCAAGACTCCAGTGGTGAAGAAGACAGAGTACCCATCAAACCTCTCCCGGCTACCCCTAGTCGG
AAGCGGAGTGTGCGAGTTTCTGATGAGGAAGAAGTTGAGGAGGAAGCTGAGAGGAGGAAGGAGAGGTGC
AAGCGGGCAGATTTGTTGTAAGGAGGAAAAGAAGGACTCGAATGAGCTCTCAGACAGTGTGGGGAA
GAGGACTCGGCTGACCTCAAGAGAGCTCAGAAAGATAAAGGGCTGCACGTGGAGGTGCGTGTGAACAGG
GAGTGGTACACGGGCCGTGTACAGCCGTGGAGGTGGCAAGCATGTGGTGCAGTGAAGTTGAAGTTT
GACTACGTGCCACAGACACGACACCAAGAGACCGCTGGGTGGAGAAAGGCAAGTGAAGTGTGCGGCTG
ATGAAACCCCTTCTCCGGAACATCAGAGCCTTGATACACAACAGGAGGGCGGGAGGAGGAGGTGGGC
CCTGTGGCCAGCAGGCCATAGCTGTGCGAGAGCCCTCCACTCCGAATGCCTCCGATTGAGCCTGAC
ACCACTGCCCTGAGCACAATCACGAGACCATCGACCTGCTTGTCCAGATCCTCCGAATTGTTTACGG
TACTTCTGCCTCAAGTTTCCCATCTCCAAGAAGCAGCTGAGTGTATGAATTCAGATGAGCTAATA
TCTTTTCTCTGAAGGAGTACTCAAGCAATATGAAGTAGGGCTCCAAAACCTGTGCAATCCTACCAG
AGCCGTGCTGACTCCCGGCCAAGGCCTCCGAGGAAAGCCTGCGCACCTCCGAGAGGAAGCTCCCGGAG
ACGGAGGAGAAGCTGCAGAAGCTGAGGACCAACATCGTGGCACTCCTGCAAAAAGGACATAGACATCAAC
ACAGATGATGAGCTGGACGCTACATTGAGGACCTCATACCAAGGGGGAC
ACGCGTACGCGGCCGCTCGAG – GFP Tag – GTTTAAAC
  
```

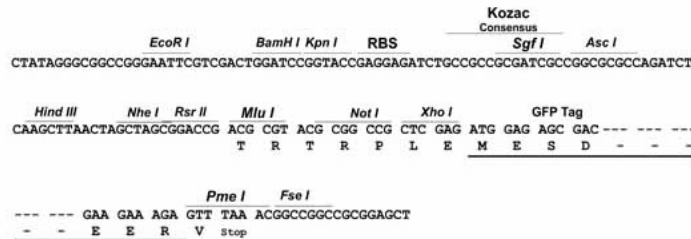
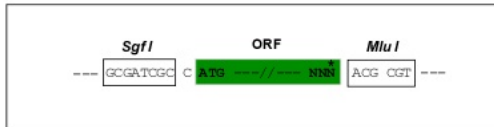
Protein Sequence: >Peptide sequence encoded by RG239895
 Blue=ORF Red=Cloning site Green=Tag(s)

MAFTNYSSLNRAQLTFEYLHTNSTTHEFLFGALAEVDNARDADATRIDIYAERREDLRGGFMLCFLDD
 GAGMDPSDAASVIQFGSAKRTPESTQIGQYGNLKS GSMRIGKDFILFTKKEDTMTCLFLSRTFHEEE
 GIDEVIVPLPTWNARTREPVTDNVEKFAIETELIYKYSFPRTEEEVMTQFMKIPGDSGTLVIFNLKLM
 DNGEPELDIISNPRDIQMAETSPEGTKPERRSFRAYAALYIDPRMRIFIHGHKVTKRLSCCLYKPRM
 YKYTSSRFKTRAEQEVKKAHEVARIAEEKAREAESKARTLEVRLGGDLTRDSRVMLRQVQNRAITLRRE
 ADVKKRIKEAKQRALKEPKELNFVFGVNIHRDLDMFYNCSRLIKMYEKVGPQLEGGMACGGVGVV
 DVPYL VLEPTHNKQDFADAKEYRHLLRAMGEHLAQYWKDIAIAQRGI IKFWDEFGYLSANWNQPPSEL
 RYKRRRAMEIPTTIQCDLCLKWRTLPPQLSSVEKDYPDTWVCSMNPDPQEQRCEASEQKQKVPGLTFRK
 DMKTQEEKQKQLTEKIRQQEKLEALQKTPIRSQADLKKLPLEVTRPSTEPEVRRPQRPRSPPLPAV
 IRNAPSRPPSLTPRPASQPRKAPVISSTPKLPALAAEEASTSRLLPPEAPRPANTLVKTASRPAP
 LVQQLSPSLLPNSKSPREVSPKVIKTPVVKKTESPIKLSPATPSRKRSVAVSDEEEVEEEAERRKERC
 KRGRFVVKEEKKDSNELSDSAGEEDSADLKRAQKDKGLHVEVRVNWREWYTGRTVAVEVGKHVVRWKVKF
 DYVPTDTPRDRWVEKGSSEVRLMKPPSPEHQSLDTQQEGGEEVGPVAQQAIAVAEPSTSECLRIEPD
 TTALSTNHETIDLLVQILRNCLRYFLPPSFPISKKQLSAMNSDELI SFPLKEYFKQYEVGLQNLCSYQ
 SRADSRAKASEESLRTSERKLRTEEEKLQKLRNTNIVALLQKIDINTDDELDAYIEDLITKGD
 TRTRPLEMESDESGLPAMEIECRITGTLNGVEFELVGGEGTPEQGRMTNKMSTKGALTFSPYLLSHV
 MGYGFYHFGTYPYSGYENPFLHAINNGGYNTRIEKYEDGGVLHVSFSYRYEAGRVIGDFKVMGTGFPED
 SVIFTDKIIRSNATVEHLHPMGDNDLDGSFTRTFSLRDGGYSSVVD SHMHFSAIHP SILQNGGPMFA
 FRRVEEDHSNTELGIVEYQHAFKTPDADAGEERV

Restriction Sites: SgfI-MluI

Cloning Scheme:

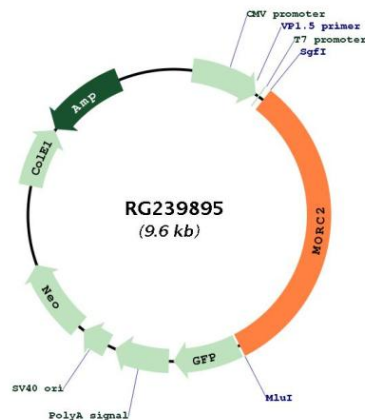
Cloning sites used for ORF Shutting:



ACCN: NM_001303257
ORF Size: 3087 bp

OTI Disclaimer:	The molecular sequence of this clone aligns with the gene accession number as a point of reference only. However, individual transcript sequences of the same gene can differ through naturally occurring variations (e.g. polymorphisms), each with its own valid existence. This clone is substantially in agreement with the reference, but a complete review of all prevailing variants is recommended prior to use. More info
OTI Annotation:	This clone was engineered to express the complete ORF with an expression tag. Expression varies depending on the nature of the gene.
Components:	The ORF clone is ion-exchange column purified and shipped in a 2D barcoded Matrix tube containing 10ug of transfection-ready, dried plasmid DNA (reconstitute with 100 ul of water).
RefSeq:	NM_001303257.2 , NP_001290186.1
RefSeq Size:	3906 bp
RefSeq ORF:	3090 bp
Locus ID:	22880
UniProt ID:	Q9Y6X9
Cytogenetics:	22q12.2
MW:	117.9 kDa
Gene Summary:	This gene encodes a member of the Microorchidia (MORC) protein superfamily. The encoded protein is known to regulate the condensation of heterochromatin in response to DNA damage and play a role in repressing transcription. The protein has been found to regulate the activity of ATP citrate lyase via specific interaction with this enzyme in the cytosol of lipogenic breast cancer cells. The protein also plays a role in lipogenesis and adipocyte differentiation. Alternative splicing results in multiple transcript variants encoding different isoforms. [provided by RefSeq, Feb 2016]

Product images:



Circular map for RG239895