

## Product datasheet for **RG239890**

### **TDRD7 (NM\_001302884) Human Tagged ORF Clone**

#### **Product data:**

Product Type:	Expression Plasmids
Product Name:	TDRD7 (NM_001302884) Human Tagged ORF Clone
Tag:	TurboGFP
Symbol:	TDRD7
Synonyms:	CATC4; PCTAIRE2BP; TRAP
Mammalian Cell Selection:	Neomycin
Vector:	pCMV6-AC-GFP (PS100010)
E. coli Selection:	Ampicillin (100 ug/mL)



[View online »](#)

**ORF Nucleotide Sequence:**

>RG239890 representing NM\_001302884.  
 Blue=ORF Red=Cloning site Green=Tag(s)

```

GCTCGTTAGTGAACCGTCAGAATTTTGTAAACGACTCACTATAGGGCGGCCGGGAATTCGTGACTG
GATCCGGTACCGAGGAGATCTGCCGCCCGGATCGCC
ATGGCCTGCACAGAAACTGCAAGAATTGCTCAGCTTGTGGCTCGTCAAAGGAGTTCTAAAAGGAAAAACC
GGCGGTCAAGTTAATTGTCAGATGAGAGTGAAGAAAAACCATGCCATTTTTCTAGAAGGAAAAACAAAA
GCAACCCCTCAGACAACCGATTGCTTCAAATTTTTCTGTTGGCAAAAAACCTAATCCAGCACCCTTA
AGAGACAAGGAAACTCTGTTGGAGTTAAGCCTGATGCTGAAATGCTCCTTATATGCTACACACAACCT
CTTGAAATGAAGCATTCAAAGACATCCAGTGCAAAGGCATGTGACCATGTCCACCAACAACAGGTTT
AGCCCAAAGGCGTCCCTCAACCACCTTGCAGATGCATCTCTCAAGAACCTCTACTAAGGAAATGAGT
GATAATTTAAATCAGACTGTTGAAAAACCAATGTCAAGCCTCTGCCTTTACACTTATAAAATGGAT
GAGGTTCAAAATCGATAAAGGAAATACTAAACAAGCATAACAATGGCATTGGATATCTAAGCTTCCA
CATTTTTACAAAGAGTTATATAAAGAAGACCTTAATCAAGGAATTTACAACAGTTTGAACACTGGCCT
CATATTTGCACGGTGGAGAAACCTTGCAGTGGTGGCCAAGATTTACTTCTTTATCCAGCTAAGAGAAAG
CAGCTTTTGAGAAGTGAAGTGGATACTGAGAAAGTACCTCTATCCCACTACCTGGTCCCAAAACAACA
CCACCGTTGAAAGGGTGTCCAACAGTTATGGCAGGAGACTTTAAAGAAAAAGTGGCAGACCTGCTGGTG
AAATACACAAGTGGCCTTTGGGCCAGTGCACCTCCGAAAGCATTGAGGAAATGTACAAAGTGAATTC
CCTGAGGATGCCTTAAAAATCTTGCTCACTTTCTGATGTATGCAGCATAGACTACATTTCTGAAAT
CCCCAGAAGGCCATTCTCTATGCTAAACTTCCATTGCCCACTGACAAAATCCAAAAGGATGCAGGGCAA
GCATGTTGATAATGATATCAAGGCTATGGTTGAACAAGAGATTTGCAGGTAGAAGAAAGCATTGCT
GAAAGTCTAATACCTTTATGGAGGACATAACAGTTCCTCCTTAATGATTCCAAGTGAAGCATCACCA
TCTGATTGGTGGTTGAACTGAGCAACAATAAGAGTGGTTATCAGGTATGTTGGGCAAGACTATTCT
GCTGCTCAGGAATTAATGGAAGATGAGATGAAGGAATATTACAGTAAGAATCCTAAGATCACACCCAGTC
CAGGCTGTGAATGTTGGCAGTTGCTGGCCGTAATGCCGAGGAGACGCTGGTTACGGGCACAGGTC
ATCTCAACAGAAGAGAACAAAATAAAGGTATGCTATGTTGACTATGGTTTTAGTAAAAATGTTGAAAAA
AGCAAAGCATACAAATTAACCCGAAGTTTTGTTCACTCTCATTTCAAGCTACAAAATGTAAGCTTGCA
GGCTTGGAAAGTCTAAGCGATGACCCTGATCTAGTGAAGTGGTTGAATCTTTAAGTGTGGAAAGATC
TTTGCAGTGGAAACTTGACAAAGCTGACATTCACCTGTTGTTCTGTACGATACCTCAGGAGAAGAT
GATATCAATATCAATGCCACCTGCTGAAGGCTATATGTGACAAGTCACTAGAGGTTACCTGCAGGTT
GACGCCATGTACACAAATGTCAAAGTAACTAATATTTGCTCTGATGGGACTCTACTGCCAGTGCCT
TGTAAGGGTCTGAACAAGCTCAGTGACCTTCTAGTAAGATAGAGGACTACTTCCATTGCAAGCACATG
ACCTCTGAGTGCTTTGTTTCATTACCTTCTGTGGGAAAACTGCCTCTTCCATTGCAAAGGAAAAATGG
TTACGAGTAGAGATCACAAATGTTACAGCAGCCGGGCTCTTGATGTTGAGTTCCCTGGACTCTGGCACT
GTGACATCTGTAAGAGTGTGAGACTCAGGGAAATCCACCTCGGTTTCTACAAGAAATGATTGCAATA
CCACCTCAGGCCATTAAGTGCTGTTTAGCAGATCTCCACAATCTATTGGCATGTGGACACCAGATGCA
GTGCTGTGGTTAAGAGATCTGTTTTGAATTGCTCGGACTGTAGCATTAAAGTTACAAAAGTGGATGAA
ACCAGAGGGATCGACATGTTTATTTATTTACCCTAAGAAGTCCCTGACCCCTCATCGCAGTATTAAT
CGCCAGATTACAAATGCAGACTTGGAAGCATCAGAAGGATGTGTTTTGAGTGCCATATCCAGTGGGA
GCTGACTCTCCCAACAGCAAAAATGGCAACATGCCATGTCGGGCAACACTGGAGAGAATTTAGAAAAG
AACCTCACAGATGTCATCAAAAAGTCCATGGTGGACCATACGAGCGCTTTCTCCACAGAGGAACTGCCA
CCTCCTGTCCACTTATCAAAGCCAGGGGAACACATGGATGTGTATGTGCCTGTGGCCTGTCAACCCAGGC
TACTTCGTATCCAGCCTTGGCAGGAGATACATAAGTTGGAAGTTCTGATGGAAGAGATGATTCTATAT
TACAGCGTGTCTGAAGAGCGCCACATAGCAGTGGAGAAAGACCAAGTGTATGCTGCAAAAGTGGAAAT
AAGTGGCAGGGTGCTTTTAAAAGGAATCCTGACCAATGGACTGGTATCTGTGTATGAGCTGGATTAT
GGCAAACCGAATTAGTCAACATAAGAAAAGTACAGCCCTAGTGGACATGTTCCGAAAGCTGCCCTTC
CAAGCAGTCAAGCTCACTTGCAGGAGTGAAGTGAACCAAGTGGTCTGAGGAGGCTTCTATGGTGTTC
CGAAATCATGTGGAGAAGAAACCTCTGGTGGCACTGGTGCAGACAGTATTGAAAATGCTAACCCCTGG
GACCGGAAAGTAGTGGTCTACTTAGTGGACACATCGTTGCCAGACACCGATACCTGGATTCTATGTTTT
ATGTCAGAGTATCTGATAGAGCTTTCAAAAAGTTAAT
ACGCGTACGCGGCCGCTCGAG - GFP Tag - GTTTAAAC
  
```

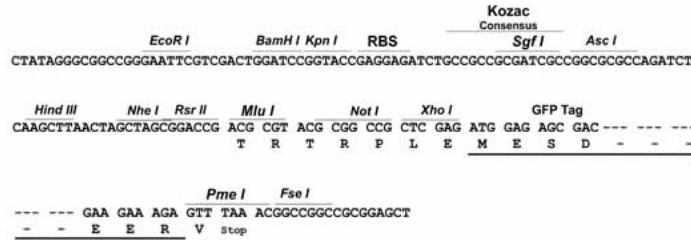
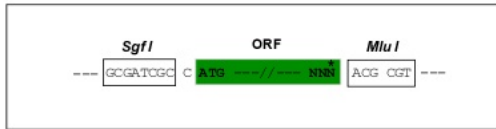
Protein Sequence: >Peptide sequence encoded by RG239890  
 Blue=ORF Red=Cloning site Green=Tag(s)

MACTETARIAQLVARQRSSKRKTGRQVNCQMRVKKTMPFFLEGKPKATLRQPGFASNFVSGKKPNPAPL  
 RDKGNSVGVKPDADMSPYMLHTTLGNEAFKIDIPVQRHVTMSTNNRFSKASLQPPLQMHLSRTSTKEMS  
 DNLNQTVEKPNVKPPASYYKMDDEVQNRRIKEILNKHNNGIWISKLPHFYKELYKEDLNQGILQQFEHWP  
 HICTVEKPCSGGQDLLLYPAKRKQLLRSELDTEKVPPLSPLPGPKQTPPLKGCPTVMAGDFKEKVADLLV  
 KYTSGLWASALPKAFEEMYKVKFPEDALKNLASLSDVCSIDYISGNPQKAILYAKLPLPTDKIQKDAGQ  
 AHGDNDIKAMVEQEYLQVEESIAESANTFMEDITVPLMIPTEASPSVLVVELSNTNEVIRYVVGKDYS  
 AAQELMEDEMKEYYSKNPKITPVQAVNVGQLLAVNAEEDAWLRAQVISTEENKIKVCYVDYGFSENVEK  
 SKAYKLNPKFCSLSFQATKCKLAGLEVLSDPDLVKVVELSTCGKIFAVEILDKADIPLVVLVDTSGED  
 DININATCLKAICDKSLEVHLQVDAMYTNVKVTNICSDGTLYCQVPCKGLNKLSDLLRKIEDYFHCKHM  
 TSECFVSLPFCGKICLFHCKGKWLVEITNVHSSRALDVQFLDSGTVTSVKVSELREIPRFLQEMIAI  
 PPQAIKCCCLADLPQSIGMWTDAVLWLRDVLNCSDCSIKVTKVDETRGIAHVYLFTPKNFDPHRSIN  
 RQITNADLWKHQKDVFLSAISSGADSPNSKNGNMPMSGNTGENFRKNLTDVIKSMVDHTSAFSTEELP  
 PPVHLSKPGEHMDVYVPVACHPGYFVIQPWQEIHKLEVLMEEMILYYSVSEERHIAVEKDVYAAKVEN  
 KWHRVLLKGIILTNGLVSYVELDYGKHELVNIRKVQPLVDMFRKLPFQAVTAQLAGVKCNQWSEEASMFV  
 RNHVEKKPLVALVQTVIENANPWDRKVVVYLVDTSLPDTDTWIHDFMSEYLIELSKVN  
 TRTRPLEMESDESGLPAMEIECRITGTLNGVEFELVGGGEGTPEQGRMTNKMSTKGALTFSPYLLSHV  
 MGYGFYHFGTYPYSGYENPFLHAINNGGYTNTRIEKYEDGGVLHVSFSYRYEAGRVIGDFKVMGTGFPED  
 SVIFTDKIIRSNATVEHLHPMGDNDLDGSFTRTFSLRDGGYSSVVDSDSHMHFKSAIHPSILQNGGPMFA  
 FRRVEEDHSNTELGIVEYQHAFKTPDADAGEERV

Restriction Sites: SgfI-MluI

Cloning Scheme:

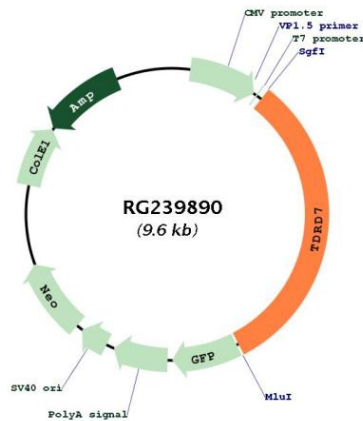
Cloning sites used for ORF Shutting:



ACCN: NM\_001302884

ORF Size: 3072 bp

<b>OTI Disclaimer:</b>	The molecular sequence of this clone aligns with the gene accession number as a point of reference only. However, individual transcript sequences of the same gene can differ through naturally occurring variations (e.g. polymorphisms), each with its own valid existence. This clone is substantially in agreement with the reference, but a complete review of all prevailing variants is recommended prior to use. <a href="#">More info</a>
<b>OTI Annotation:</b>	This clone was engineered to express the complete ORF with an expression tag. Expression varies depending on the nature of the gene.
<b>Components:</b>	The ORF clone is ion-exchange column purified and shipped in a 2D barcoded Matrix tube containing 10ug of transfection-ready, dried plasmid DNA (reconstitute with 100 ul of water).
<b>RefSeq:</b>	<a href="#">NM_001302884.2</a>
<b>RefSeq Size:</b>	3572 bp
<b>RefSeq ORF:</b>	3075 bp
<b>Locus ID:</b>	23424
<b>UniProt ID:</b>	<a href="#">Q8NHU6</a>
<b>Cytogenetics:</b>	9q22.33
<b>MW:</b>	115.8 kDa
<b>Gene Summary:</b>	The protein encoded by this gene belongs to the Tudor family of proteins. This protein contains conserved Tudor domains and LOTUS domains. It is a component of RNA granules, which function in RNA processing. Mutations in this gene have been associated with cataract formation in mouse and human. Alternative splicing results in multiple transcript variants. [provided by RefSeq, Nov 2014]

**Product images:**


Circular map for RG239890