

Product datasheet for **RG239887**

HA1 (ARHGAP45) (NM_001282335) Human Tagged ORF Clone

Product data:

Product Type:	Expression Plasmids
Product Name:	HA1 (ARHGAP45) (NM_001282335) Human Tagged ORF Clone
Tag:	TurboGFP
Symbol:	HA1
Synonyms:	HA-1; HLA-HA1; HMHA1
Mammalian Cell Selection:	Neomycin
Vector:	pCMV6-AC-GFP (PS100010)
E. coli Selection:	Ampicillin (100 ug/mL)



[View online »](#)

ORF Nucleotide Sequence:

>RG239887 representing NM_001282335.
 Blue=ORF Red=Cloning site Green=Tag(s)

```

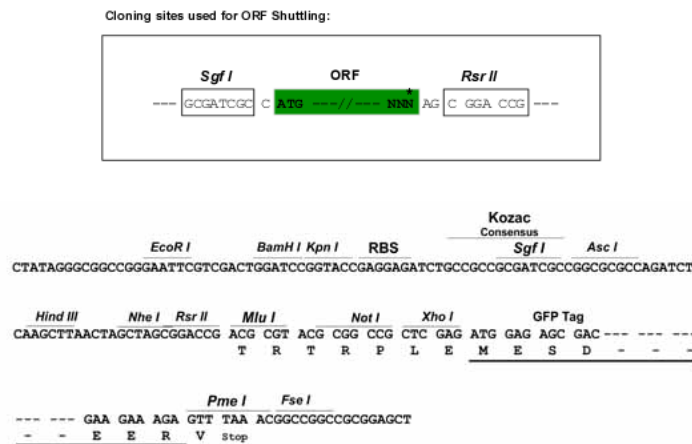
GCTCGTTTAGTGAACCGTCAGAATTTTGTAAACGACTCACTATAGGGCGGCCGGGAATTCGTGACTG
GATCCGGTACCGAGGAGATCTGCCGCCCGCATCGCC
ATGTGTATCTGCGGGACGGCGCACCCGGTGTGGACGAGGGCCCCGTGCGCTGCCGGGCGGGCCCCCGA
GACCTCCTTGAGGCCCGCCCGCCCGCCACGAGTGCCTGGGTGAGGCTCTGCGTGTGCATGCATCAG
ATCATCTCCAAGTACCCGCTGCTGAACACCGTGGAGACGCTCACCGCAGCCGGCACCCCTCATTGCCAAG
GTCAAAGCCTTCCATTATGAGAGCAACAATGATCTGGAGAAACAGGAGTTCGAGAAGGCCCTGGAGACG
ATTGCTGTGGCCTTCAGTAGCACAGTGTCCGAGTTCCTCATGGGTGAAGTGGACAGCAGCACCCCTCTA
GCAGTGCCTCCTGGGACTCGAGCCAGTCCATGGAAAGCCTGTATGGACCGGGCAGTGGGGCACGCT
CCCAGCCTGGAAGACTGTGACGCCGGCTGCCTGCCCGCCGAGGAGGTGGACGTGCTGCTACAGCGCTGT
GAGGGGGCGTGGATGCCGACTGCTGTATGCCAAGAACATGGCCAAGTACATGAAGGACCTCATCAGC
TACCTGGAGAAGCGGACGACGCTGGAGATGGAGTTTGCCAAGGGCTGCAGAAGATCGCTACAACCTGC
AGACAGAGCGTATGCAGGAGCCCCACATGCCGCTCCTGTCCATCTACTGCTGGCCTGGAGCAGGAC
CTGGAGTTCGGCCACAGCATGGTGCAGGCGGTGGGCACCTTGACAGCCAGACCTTCATGCAGCCCTG
ACCTGCGGGCGGCTTGAACACGAGAAGCGCAGGAAGGAGATCAAGGAGGCTGGCACCGTGCCAGAGG
AAGCTGCAAGAGGCGGAGTCCAACCTGCACAAGGCCAAGCAGGGTTACGTGCAGCGCTGCGAGGACCAC
GACAAGGCTCGCTTCTCGTGGCCAAGGCGGAGGAGGAGCAGGCTGGCAGCGCGCCGGGAGCAGGACGC
ACGGCCACCAAGACCCTGGACAAGCGCGCGCGCTGGAGGAGGAGGCCAAGAACAAGGCGGAGGAAGCT
ATGGCCACCTACCGACCTGCGTGGCCGACGCGAAGACGAGAAGCAGGAGCTGGAGGATACCAAGGTG
ACGGCGCTGCGGCAGATCCAGGAGGTCACTCCGGCAGAGCGACCAAAACATCAAGTCGGCCACGATCTCC
TACTACCAGATGATGCATATGCAGACGGCGCGCTGCCGTCACCTTCCAGATGCTGTGTGAGAGGAC
AAGCTGTATGACCCAGGCCAGCAGTACGCTCCACGTCGCCACGCTGCAGCGGGACAGGAGCCGAT
GTGCACTACGACTTTGAGCCCCAGTCTCCGCCAACGCCTGGTCCCCCGTGCATGCGTGCCGGAAGAGC
AGCTTCAACGTGAGTGTGTGGCGGGCCGAGGCTGCCGGGAGCCCCCAGAAGAAGGCGGGTGCCT
GAGGGCACACCTGCCAAGGACCACAGGGCCGGGCGAGGACACCAGGTTCAACAAGTCATGGCCGCTCTCG
ATCTCAGACTCGGACAGTGGGCTGGACCCCGCCCTGGCGCAGGGGACTTAAAGAAGTTCGAGCGGACG
TCATCCAGTGGTACCATGTCGTCCACGGAGGAGTGGTGGACCCAGCGGTGGAGCCGGGGCTTCAGCC
TTTGAGCAGGCTGACCTCAACGGCATGACCCCCGAGCTGCCGGTGGCCGTGCCAGTGGACCGTTCGCG
CAGGAGGGGCTGTCCAAGGCGGCCGTAATCACCAGGCTCCGGAAGCTCCGCACGCCCGCCAAAGTGGCGC
GAGTGGCAACAGCTACGTCTACTTCCAGGCTGCTGAGTGTGAAGAGTGTGCTGCTGGCTGCCACAAGAAA
TGCTGGAGACGCTGGCCATACAGTGGGGCACAGAAGCTGCAAGGCCGCTGCAGCTGTTTCGGCCAG
GACTTCAGCCACGCGGCCCGCAGCGCCCCGACGGCGTGCCTTCATCGTCAAGAAGTGCCTCTGCGAG
ATCGAGCGGGCGGGCGCTGCGCACCAAGGGCATCTACCGGGTCAATGGGGTAAAGACACGCGTGGAGAAG
CTGTGCCAGGCCCTCGAGAACGGCAAGGAGTGGTTCGAGCTGTGCGAGGCTCGCCCCACGACATCAGC
AACGTCCTCAAGCTCTACCTGCGTCAGCTTCCCGAGCCGCTCATCTCCTTCCGCTCTACCACGAGCTC
GTAGGGCTGGCCAAGGACAGCTGAAGGCAGAGGCCGAGGCCAAGGCGGGCTCCCGGGCCGGCAGGAC
GGCTCGGAGAGCGAGGCAAGTGGCGGTGCCCTGGCAGGTGGCTGCGGGAGCTCCTGCGGACCTGCCCG
CCTGAGAACCAGGCTCGCTGCAGTACCTGCTGGTACCTACGACAGGATCGTGGAGTGGAGCAGGAC
AACAAAGATGACCCCGGGAACCTGGGCATCGTGTTCGGGCCACGCTGCTTGGCCACGGCCACCAGG
GCCACCGTGTCCCTCTCCTCCCTGGTGGATTATCCCCATCAGGCCCGCTCATCGAGACTCTCATCGTC
CACTACGGCTGGTCTTCGAGGAGGAGCCGGAGGAGACCCCGGGGGCCAGGACGAGTATCCAACCAG
CGAGCTGAGGTAGTGTCCAGGTGCCGTACCTGGAGGCGGGCGAGGCGGTGGTCTACCCGCTGCAGGAG
GCGGGCGGACGGGTGCAGAGAATCCCGAGTTGTGTCCAACGATTTCGACTCGGACCTAGAGGAGGCC
TCCGAGCTGCTGTCTCATCGGAGGCCAGTGCCTGGGCCACCTCAGCTTCTGGAGCAGCAGCAGAGC
GAGGCCAGCTAGAGGTGGCTTCTGGCAGCCACAGCGGCAGTGGAGGACGCTGGAGGCCACAGCCCGG
GAGGACGGGGACGGGACGAGGACGGCCCGGCCAGCAGCTCTCAGGATTCAACCAACCAAGTCCCAAC
AACGTGCTGCAGGCCACTGCCCCCATGAGGCTCCGTGGCGGGCGGATGACACTGGGCTCCTGCAGG
GAAAGGCAGCCGGAATTCGTG
AGCGGACCGACGCGTACGCGGCCGCTCGAG - GFP Tag - GTTTAAAC
  
```

Protein Sequence: >Peptide sequence encoded by RG239887
 Blue=ORF Red=Cloning site Green=Tag(s)

MCICGTAHPVLDEGPVRCRAGPRDLLEARRPRAHECLGEALRVMHQIISKYPLLNTVETLTAAGTLIAK
 VKAFHYESNNDLEKQEFKALETIAVAFSSTVSEFLMGEVDSSTLLAVPPGDSSQSMSL YGPGSEGTP
 PSLEDCDAGCLPAEEVDVLLQRCEGGVDAALLYAKNMAKYMKDLISYLEKRTTLEMEFAKGLQKIAHNC
 RQSVMQEPHMPLLSIYSLALEQDLEFGHSMVQAVGTLQTQTFMQPLTLRRLLEHEKRRIKEAWHRAQR
 KLQEAESNLKAKQGYVQRCEHDHDKARFLVAKAEQAGSAPGAGSTATKTLDKRRRLEEEAKNKAEEA
 MATYRTRCVADAKTQKQELEDTKVTRQIQEVIQSDQTIKSATISYYQMMHMQTAPLPVHFQMLCESS
 KLYDPGQQYASHVRQLQRDQEPDVHYDFEPHVSANAWSPVMARKSSFNVSVDVARPEAAGSPPEEGGCT
 EGTPAKDHRAGRGHQVHKSWPLISDSDSLDPGPGAGDFKFKFERTSSSGTMSSTEELVDPDGGAGASA
 FEQADLNGMTPELPVAVPSGPFREHGLSKAARTHRLRKLRTPAKCRECNSVYVFQGAEECECLACHKK
 CLETLAIQCGHKKLQGRQLFGQDFSHAARSAPDGVPIVKKCVCEIERRALRTKGIYRVNGVKTRVEK
 LCQAFENGKELVELSQASPHDISNVLKLYLRQLPEPLISFRLYHELVLAKDSLKAEAEAKAASRGRQD
 GSESEAVAVALAGRLRELLRDLPPENRASLQYLLRHLRRIVEVEQDNKMTPGNLGIVFGPTLLRPRPTE
 ATVSSLVDYPHQARVIETLIVHYGLVFEEPEETPGGQDESSNQRAEVVVQVPLYEAGEAVVYPLQE
 AAADGCRESRVVSNDSDSLEEASELLSSSEASALGHL SFLEQQQSEASLEVASGSHSGSEEQLEATAR
 EDGDGDEDDGPAQQLSGFNTNQSNVNLQAPLPPMRLRGGMTLGSRCRERQPEFV
 SGPTRTRPLEMESDESGLPAMEIECRITGTLNGVEFELVGGGEGTPEQGRMTNKMSTKGALTFSPYLL
 SHVMGYGFYHFGTYPSTYENPFLHAINNGGYTNTRIEKYEDGGVLHVSFSYRYEAGRVIGDFKVMGTGF
 PEDSVIFTDKIIRSNATVEHLHPMGDNDLDGSFTRTFSLRDGGYSSVSDSHMHFKSAIHPSILQNGGP
 MFAFRRVEEDHSNTELGIVEYQHAFKTPDADAGEERV

Restriction Sites: SgfI-RsrII

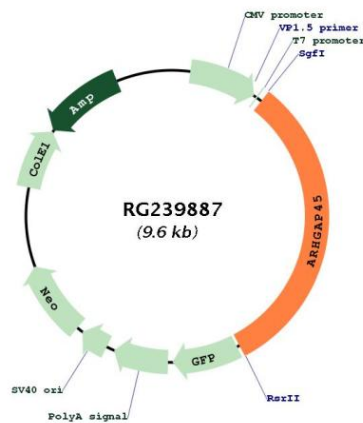
Cloning Scheme:



ACCN: NM_001282335

ORF Size: 3057 bp

OTI Disclaimer:	The molecular sequence of this clone aligns with the gene accession number as a point of reference only. However, individual transcript sequences of the same gene can differ through naturally occurring variations (e.g. polymorphisms), each with its own valid existence. This clone is substantially in agreement with the reference, but a complete review of all prevailing variants is recommended prior to use. More info
OTI Annotation:	This clone was engineered to express the complete ORF with an expression tag. Expression varies depending on the nature of the gene.
Components:	The ORF clone is ion-exchange column purified and shipped in a 2D barcoded Matrix tube containing 10ug of transfection-ready, dried plasmid DNA (reconstitute with 100 ul of water).
RefSeq:	NM_001282335.2
RefSeq Size:	4965 bp
RefSeq ORF:	3060 bp
Locus ID:	23526
UniProt ID:	Q92619
Cytogenetics:	19p13.3
MW:	112.9 kDa
Gene Summary:	Contains a GTPase activator for the Rho-type GTPases (RhoGAP) domain that would be able to negatively regulate the actin cytoskeleton as well as cell spreading. However, also contains N-terminally a BAR-domain which is able to play an autoinhibitory effect on this RhoGAP activity.[UniProtKB/Swiss-Prot Function]

Product images:


Circular map for RG239887