

## Product datasheet for **RG239886**

### **SENP7 (NM\_001282802) Human Tagged ORF Clone**

#### **Product data:**

|                           |   |
|---------------------------|---|
| Product Type:             | Expression Plasmids                         |
| Product Name:             | SENP7 (NM_001282802) Human Tagged ORF Clone |
| Tag:                      | TurboGFP                                    |
| Symbol:                   | SENP7                                       |
| Mammalian Cell Selection: | Neomycin                                    |
| Vector:                   | pCMV6-AC-GFP (PS100010)                     |
| E. coli Selection:        | Ampicillin (100 ug/mL)                      |



[View online »](#)

**ORF Nucleotide Sequence:**

>RG239886 representing NM\_001282802.  
 Blue=ORF Red=Cloning site Green=Tag(s)

```

GCTCGTTAGTGAACCGTCAGAATTTTGTAAACGACTCACTATAGGGCGGCCGGGAATTCGTGACTG
GATCCGGTACCGAGGAGATCTGCCGCCGCGATCGCC
ATGTTAAATGCAAAACCAGAGGATGCCATGTTCAATCACCCTGTCCAAATTCAGAAGCTCAGAACGC
TGGACTCTCCCTTTCAGTGGAAAGAAGCCTAAGGAATAAAGTCATCTCTAGACCATAAAAAATAAA
AAACATATCCGAGGGTGTCTGTTACTTCCAAGTCATCACCAGAAAGGCAACTCAAAGTTATGTTGACG
AATGTCCTATGGACGGATTTAGGACGAAAATTCAGAAAGACCCTACCTAGAAACGATGCTAATTTATGT
GATGCCAACAAAGGTGCAATCAGACTCATTGCCTTCGACATCTGTTGACAGCCTAGAGACATGTCAAAAA
TTAGAACCTCTTCGCCAAAGCCTTAATTTATCTGAAAGGATACCCAGAGTTATATTGACGAATGCCTG
GGAACGGAGTTAGGAAGAAAATACATAAGGACCCACCTGTAAGTGAAGGAAAGTTGAGTGATACAGAC
AACTTGCAATCAGAGCAACTTTCTTCATCATCTGATGGCAGCCTAGAATCTTATCAAATCTAAACCCT
CACAAGAGCTGTTATTTATCTGAAAGGGGCTCACAACGAAGTAAAGACAGTATGACAATCTGCAAG
CAGACTGCGCACAATAAAGAAAAACGAAGAAAGGATGATGGCATTCTCTTTTAAATCTGATACTCAG
CCTGAAGACCTTAACAGTGGAAAGTAGAGTTGTGATCATCTCGAACAGGAAAGCAGAAACAGGATGTT
AAATATCTGATTCAAAAGTGGAACTCACTCTGATTTCCAGGAAGACAAAAGAGAGGCTTAGAAATAAT
TTACCTGATTCTCAATATTGACTTCTTTGGATAAGTCAACAGAACAGACAAAAAACAAGAAGATGAC
TCAACAATATCCACTGAGTTTGAAGCCAAAGTAAAACATCATCAGGATCCAAAACCTGCCTGAAGAA
ATTACAATAAACCTACAAAAAGTATTTACTAAACTATCCTCACTAACAGTCAGGAGTTGACTTTG
AGTAATGCCACCAAAAGTGCCTCTGCCGGTCAACCACTGAAACCGTTGAGAACTCTAATCCATTGAT
ATTGTGGGGATTCTTCCCTGGTTGAGAAGGATGAGAATGAGTTGAATACCATAGAAAAGCCTATTCTA
AGAGACATAATGAAGGGAACCAATCAGTATCAGCTGAACCAATTGTTGTTCCAGTAAAGGAAAG
GGACCTGTTGAACATAAAAAGTTCAGAAATCTTAAAGTTACAATCTAAGCAAGACCGTGAGACAACCTAAT
GAAAATGAGAGTACTTCTGAATCAGCATTGTTAGAATACCATTGATTACATGTGAATCTGTACAGATG
TCATCTGAATTATGCCATATAATCCTGTGATGGAGAACATTTCCAGTATTATGCCTAGTAATGAGATG
GATCTACAACCTGGATTTTATTTACTTCTGTTTATTTGGTAAAATAAAAGGAGCTTCTAAAGTTGT
GTTACAATCACAAAAAATATTTAAGATCCCATTTCAGTGTCCCTGAATGAGATTTCTTCTAGTG
GATACCACACATTTAAAGCGTTTGGGTTATGGAAAAGTAAAGGATGATAATCACAGTAAAAGGAGTCAT
GCTATTCTTTCTCTGGGTCTCTCAGATTATCTTCAAGAGATTCAGACCCAATTAGAACACTCTGTA
TTAAGCCAGCAATCAAAATCTAGTGAATTCATTTTCTTGAACACACAATCCTGTTTCCAAAAGAGAA
GAATTGAAGCTGAAAGATATTATGACGGAATAAGTATAATCAGTGGAGAATTAGAGCTTCTTACCCG
TTGCTTGGGTTCAAGCATTTCCTTTGTTTCAGAACCTCTCTTCAAAGAAAGTTCTTTTATTCTATTAT
TACTGTGTTTCAACTGTTCTTTCCCTGCTGGTGTGCTGTTGCTGAAGAAATGAAGCTGAAATCAGTA
TCTCAGCCCTCAAACACAGATGCCGCCAAGCCTACTTACACCTTCTGCAAGCAAGTAAAGTAAAGTGC
TACTCCCTTTCTATTACATCTAATCCAGATGAAGAATGGCGAGAAGTCAAGCACACTGGACTTGTTCAG
AAGTTGATTGTATCCTCCACCACCTACTAAGGGGGATTAGGAGTAACTAATGAAGATCTGGAGTGT
TTAGAAGAAGGAGAGTTTCTTAATGATGAATCATTGATTTTACCTTAAAGTATCTTATATTGGAGAAG
GCATCAGATGAACCTGTTGAACGAAGTCAATTTTGTAGCTTTTCTATAAATGCTTGACAAGAAAG
GAAAATAATTTAACAGAAGATAATCCAAATCTTCAATGGCACAGAGAAGACATAAAAGAGTAAAGACA
TGGACTCGTCACATAAACATTTTAAATAAAGATTACATCTTTGTACCTGTAATGAGTCTGCTCACTGG
TATCTCGCAGTCAATTTGTTTCCATGGTTAGAAGAAGCTGTGATGAAGATTTTCCAAAACTGTATCC
CAGCAGTCCCAGGCTCAGCAGTCCCAAAATGACAACAAAAACAATAGATAATGATCTACGTACTACTTCG
ACACTGTCTTTGAGTGCAGAGGATTCCTAAAGTACCGAGTCAATATGTCAGTACCAAGAAAAATGTGT
AAAAGGCCATGTATTCTTATACTAGACTCCTTGAAGCTGCTTCTGTACAAAACACAGTTCAGAATTTA
CGAGAGTATTTAGAGGTAGAGTGGGAAGTTAACTAAAAACTCATCGTCAATTCAGCAAAACAAACATG
GTGGATCTATGCCCTAAAGTTCTTAAACAGGACAATAGCAGTATTGTGGAGTATATTTATTGCAGTAT
GTGAAAAGCTTCTTCAAGGATCCTATTGTTAACTTTGAACTTCCAATTCATTTGGAGAAGTGGTTTCT
CGTCATGTAATAAAGACCAAACGGGAAGATATTCGAGAGCTCATCTTGAACCTCATTACAGCAACAG
AAGGGCAGCAGTAGC
ACGCGTACGCGGCCGCTCGAG - GFP Tag - GTTTAAAC
  
```

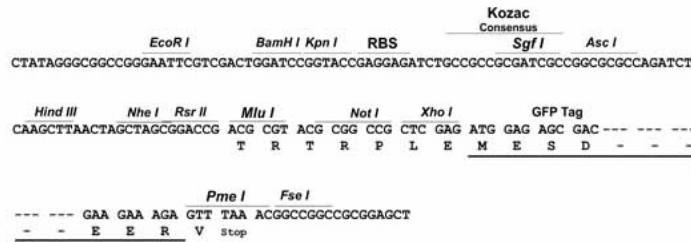
Protein Sequence: >Peptide sequence encoded by RG239886  
 Blue=ORF Red=Cloning site Green=Tag(s)

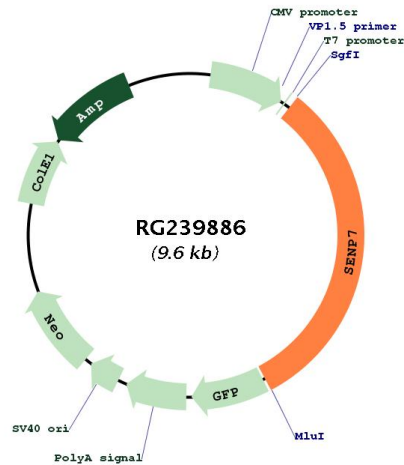
MLNAKPEDVHVQSPLSKFRSSERWTLPLQWERSLRNKVISLDHKNKKHIRGCPVTSKSSPERQLKVMLT  
 NVLWTDLGRKFRKTLPRNDANLCDANKVQSDSLPSTSVDSLETCQKLEPLRQSLNLSERIPRVILTNVL  
 GTELGRKYIRTTPVTEGSLSDTDNLQSEQLSSSSDGSLESYQNLNPHKSCYLSERGSQRSKTVDNNAK  
 QTAHNKEKRRKDDGILLSLSDTQPEDLNSGSRGCDHLEQESRNKDKVYSDSKVELTLISRKTRRLRNN  
 LPDSQYCTSLDKSTEQTKKQEDDSTISTEFKPSSENYHQDPKLEPEITTKPKSDFTKLSSLNSQELTL  
 SNATKSASAGSTTETVENSNSIDIVGSSSLVEKDENELNTEKPIILRGHNEGNQSLISAEPVIVSSDEE  
 GPVEHKSSEILKLQSKQDRETTNENESTSESALLEPLITCESVQMSSELCYPNPMENISSIMPSNEM  
 DLQLDFIFTSVYIGKIKGASKGCVTITKKYIKIPFQVSLNEISLLVDTTHLKRFLWKSDDNHSKRSH  
 AILFFWVSSDYLQEIQTQLEHSVLSQSKSSEFIFLELHNPVSQREELKLDIMTEISIIISGELELSYP  
 LSWVQAFPLFQNLSSKESFIHYCVSTCSFPAGVAEEMKLSVVSQPSNTDAAKPTYTFLQKQSSGC  
 YLSITSNPDEEWREVRHTGLVQKLIVYPPPTKGGLVGTNEDLECEEGEFLNDVIIDFYLYLILEK  
 ASDELVERSHIFSSFFYKCLTRKENNLTEDNPNLSMAQRRHQRVTRWTRHINIFNKDYIFVPVNESSHW  
 YLAVICFPWLEEAVYEDFPQTVSQQSQAQQSQNDNKTIDNDRTTSTLSLSAEDSQSTESNMSVPPKMC  
 KRPCILILDLSKAASVQNTVQNLREYLEVEWEVKLKTHRQFSKTNMVDLCPKVPKQDNSSDCGVYLLQY  
 VESFFKDIIVNFELPIHLEKWFPRHVIKTKREDIRELILKLHLQQQKSSS  
 TRTRPLEMESDESGLPAMEIECRITGTLNGVEFELVGGEGTPEQGRMTNKMSTKGALTFSPYLLSHV  
 MGYGFYHFGTYPSGYENPFLHAINNGGYNTRIEKYEDGGVLHVSFSYRYEAGRVIGDFKVMGTGFPED  
 SVIFTDKIIRSNATVEHLHPMGDNDLDGSFTRTFSLRDGGYSSVVDSHMHFKSAIHPSILQNGGPMFA  
 FRRVEEDHSNTELGIVEYQHAFKTPDADAGEERV

Restriction Sites: SgfI-MluI

Cloning Scheme:

Cloning sites used for ORF Shutting:



**Plasmid Map:**


|                          |  |
|--------------------------|--|
| <b>ACCN:</b>             | NM_001282802   |
| <b>ORF Size:</b>         | 3051 bp  |
| <b>OTI Disclaimer:</b>   | The molecular sequence of this clone aligns with the gene accession number as a point of reference only. However, individual transcript sequences of the same gene can differ through naturally occurring variations (e.g. polymorphisms), each with its own valid existence. This clone is substantially in agreement with the reference, but a complete review of all prevailing variants is recommended prior to use. <a href="#">More info</a> |
| <b>OTI Annotation:</b>   | This clone was engineered to express the complete ORF with an expression tag. Expression varies depending on the nature of the gene.   |
| <b>Components:</b>       | The ORF clone is ion-exchange column purified and shipped in a 2D barcoded Matrix tube containing 10ug of transfection-ready, dried plasmid DNA (reconstitute with 100 ul of water).   |
| <b>RefSeq:</b>           | <a href="#">NM_001282802.2</a>   |
| <b>RefSeq Size:</b>      | 4968 bp  |
| <b>RefSeq ORF:</b>       | 3054 bp  |
| <b>Locus ID:</b>         | 57337  |
| <b>UniProt ID:</b>       | <a href="#">Q9BQF6</a>   |
| <b>Cytogenetics:</b>     | 3q12.3   |
| <b>Protein Families:</b> | Druggable Genome, Protease   |
| <b>MW:</b>               | 116.3 kDa  |

**Gene Summary:**

The reversible posttranslational modification of proteins by the addition of small ubiquitin-like SUMO proteins (see SUMO1; MIM 601912) is required for many cellular processes. SUMO-specific proteases, such as SENP7, process SUMO precursors to generate a C-terminal diglycine motif required for the conjugation reaction. They also display isopeptidase activity for deconjugation of SUMO-conjugated substrates (Lima and Reverter, 2008 [PubMed 18799455]).[supplied by OMIM, Jun 2009]