

Product datasheet for **RG239882**

USP8 (NM_001283049) Human Tagged ORF Clone

Product data:

Product Type:	Expression Plasmids
Product Name:	USP8 (NM_001283049) Human Tagged ORF Clone
Tag:	TurboGFP
Symbol:	USP8
Synonyms:	HumORF8; PITA4; SPG59; UBPY
Mammalian Cell Selection:	Neomycin
Vector:	pCMV6-AC-GFP (PS100010)
E. coli Selection:	Ampicillin (100 ug/mL)



[View online »](#)

ORF Nucleotide Sequence:

>RG239882 representing NM_001283049.
 Blue=ORF Red=Cloning site Green=Tag(s)

```

GCTCGTTAGTGAACCGTCAGAATTTTGTAAACGACTCACTATAGGGCGGCCGGGAATTCGTGACTG
GATCCGGTACCGAGGAGATCTGCCGCCCGGATCGCC
ATGCCTGCTGTGGCTTCAGTTCCTAAAGAACTCTACCTCAGTTCCTCACTAAAAGACCTTAATAAGAAG
ACAGAAGTTAAACCAGAGAAAAAAGCACTAAGAGATATGAAGAAGCTGAAGTCGGAAAAAAGCTTGAG
GAAAAAGACAGGCAGGAGGAAGCACAGCGGCTACAACAAAAAGGCAGGAAACAGGAAGAGAGGATGGT
GGCACATTGGCTAAAGGCTCTTTGGAGAATGTTTTGGATTCCAAAGACAAAAACCCAAAAAGCAATGGT
GAAAAGAATGAAAAATGTGAGACCAAAGAGAAAGGAGCAATCACAGCAAAGGAACTATACACAATGATG
ACGGATAAAAAACATCAGCTTGATTATAATGGATGCTCGAAGAATGCAGGATTATCAGGATTCCTGTATT
TTACATTCTCTCAGTGTCTGAAGAAGCCATCAGTCCAGGAGTCACTGCTAGTTGGATTGAAGCACAC
CTGCCAGATGATTCTAAAGACACATGGAAGAAGAGGGGAATGTGGAGTATGTGGTACTTCTTGACTGG
TTTAGTTCTGCCAAGATTTACAGATTGGAACAACTCTCCGGAGTCTGAAAGATGCACTTTTCAAGTGG
GAAAGTAAACTGCTCCTGCGCAATGAGCCTTTGGTTTTAGAGGGAGGCTATGAAAAGTGGCTCCTTTGT
TATCCCCAGTATACAACAAATGCTAAGGTCACTCCACCCACAGCAGCCAGAATGAAGAGGTGTCTATC
TCATTGGATTTTACTTATCCCTCATTGGAAGAATCAATTCCTTCTAAACCTGCTGCCAGACGCCACCT
GCATCTATAGAAGTAGATGAAAAATAGAAATGATAAGTGGTCAAAATGAGAGAATGGGACCACTGAAT
ATATCACTCCAGTTGAACCAAGTTGCTGCTTCTAAATCTGATGTTTACCATAATTCAGCCAGTGCCT
AGTATAAAGAATGTTCCACAGATTGATCGTACTAAAAACAGCAGTCAAATGCCTGAAGAGCATAGA
ATAAAATCTGAAAGTACAACCATGAGCAACAATCTCCTCAGAGTGGAAAAGTTATTCTGATCGTTCC
ACCAAGCCAGTAGTTTTTCTCCAACCTCATGTTAACAGATGAAGAAAAGGCTCGTATTCATGCAGAA
ACTGCTCTTCTAATGAAAAAACAACAAGAAAAAGAACTTCGGGAAAGGCAGCAAGAGGAACAGAAA
GAGAAACTGAGGAAGGAAGAACAAGAACAAGCAAAAAAGCCAAAAAGAAACAAGAAGCTGAAGAAAATGAAAT
ACAGAGAAGCAACAAAAAGCAAAAAGAAATGGAGAAGAAAGAAAGTGAACAGGCCAAGAAAGAAGAT
AAAGAAACCTCAGCAAAGAGGGGCAAGAAATAACAGGAGTAAAAAGACAAAGTAAAGTGAACATGAA
ACTTCTGATGCCAAGAAATCTGTAGAAGATAGGGGAAAAAGGTGTCCAACCCAGAAATACAGAAAAAG
TCAACAGGAGATGTGCCCATACATCTGTGACAGGGGATTCAGGTTCAGGCAAGGCTCAACGAGAACCT
TTGACAAGAGCACGAAGTGAAGAAATGGGAGGATCGTACCAGGACTGCCTTCAGGCTGGCCAAGTTT
CTTGACCCAATCACTGGAACCTTTGTTATTATCATTACCCACCAACTGTTTCAATGTACCCACCG
GAAATGGCTCCTTCATCTGCACCTCCTTCCACCCCTCAACTCATAAAGCCAAGCCACAGATTCCTGCT
GAGCGGGATAGGGAACCTTCCAACCTGAAGCGCTCCTACTCCTCCCAGATATAACCCAGGCTATTCAA
GAGGAAGAGAAGGGAAGCCAACAGTAACTCCAACAGTTAATCGGGAAAAACAAGCCAACATGTTATCCT
AAAGCTGAGATCTCAAGGCTTTCTGCTTCTCAGATTCGGAACCTCAATCCTGTTTTTGGAGGTTCTGGA
CCAGCTCTTACTGGACTTCGTAACCTTAGGAAATACTTGTATATGAACTCAATATTGCAGTGCCTATGT
AACGCTCCACATTTGGCTGATTATTTCAACCGAAACTGTTATCAGGATGATTAACAGGTCAAATTTG
TTGGGGCATAAAGGTGAAGTGGCAGAAGAATTTGGTATAATCATGAAAGCCCTGTGGACAGGACAGTAT
AGATATATCAGTCCAAGGACTTTAAAAACACCATTGGGAAGTCAATGACCAGTTTGCAGGATACAGT
CAGCAAGATTCACAAGAATTGCTTCTGTTCTAATGGATGGTCCATGAAGATCTAAATAAAGCTGAT
AATCGGAAGAGATATAAAGAAGAAAAATAATGATCATCTCGATGACTTTAAAGCTGCAGAACATGCCTGG
CAGAAACACAAGCAGCTCAATGAGTCTATTATTGTTGCACTTTTTTCAGGGTCAATTCAAATCTACAGTA
CAGTGCCTCACATGTCACAAAAAGTCTAGGACATTTGAGGCCTTCATGTATTTGTCTCTACCACTAGCA
TCCACAAGTAAATGTACATTACAGGATTGCCTTAGATTATTTCCAAAGAAGAAAAACTCACAGATAAC
AACAGATTTTACTGCAGTATTGCAGAGCTCGACGGGATTCCTAAAAAAGATAGAAATCTGGAAGTTA
CCACCTGTGCTTTTAGTGCATCTGAAACGTTTTTCTACGATGGCAGGTGAAACAAAAATTACAGACA
TCTGTGGACTTCCCGTTAGAAAACTTGACTTGTACAGTATGTTATTGGTCAAAGAACAATTTGAAG
AAATATAATTTGTTTTCTGTTTCAAATCACTACGGTGGGCTGGATGGAGGCCACTACACAGCCTATTGT
AAAAATGCAGCAAGACAACGGTGGTTTAAAGTTTGTGATCATGAAGTTTCTGATATCTCCGTTTCTTCT
GTGAAATCTTCAGCAGCTTATATCCTCTTTTACTTCTATTGGGACCACGAGTAACTGATGTAGCCACA
ACGCGTACGCGGCCGCTCGAG - GFP Tag - GTTTAAAC
  
```

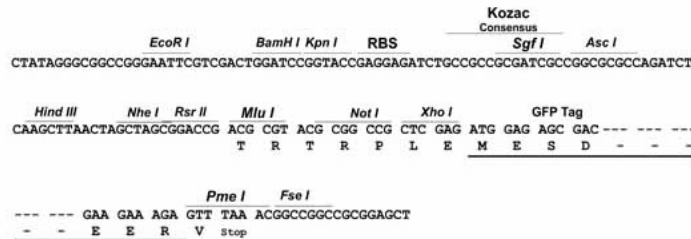
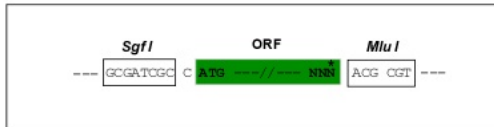
Protein Sequence: >Peptide sequence encoded by RG239882
 Blue=ORF Red=Cloning site Green=Tag(s)

MPAVASVPKELYLSSSLKDLNKKTEVKPEKISTKRYEEAEVRKKLEEKDRQEEAQLRQQKRQETGREDD
 GTLAKGSLNVLDSKDKTQKSNGEKNEKCEKGAITAKELYTMMTDKNI SLIIMDARRMQDYQDSCI
 LHSLSVPEEAI SPGVTASWIEAHL PDDSKDTWKKRGNVEYVLLDWFSSAKDLQIGTTLRSLKDALFKW
 ESKTVLRNEPLVLEGGYENWLLCYPQYTTNAKVTPPPRRQNEEVSISLDF TYP SLEESIPSKPAAQTPP
 ASIEVDENIELISGQNERMGPLNISTPVEPVAASKSDVSP IIQPVPSIKNVPQIDRTKKPAVKLPEEHR
 IKSESTNHEQQSPQSGKVIPDRSTKPVVFSPTLMLTDEEKARIHAETALLMEKNKQEKELRERQQEEQK
 EKLRKEEQEQKAKKKQEAENEITEKQQKAKEEMEKKESEQAKKEDKETSARKRGEITGVKRQSKSEHE
 TSDAKKSVEDRGKRCPTPEIQKKSTGDVPHTSVTGD SGSGKAQREPLTRARSEEMGRIVPLPSGWAKF
 LDPIITGTF RYHSPNTNVMYPPMAPSSAPPSTPPTHKAKPQIPAERDREPSKLRSYSSPDITQAIQ
 EEEKRKPTVTPTVNRENKPTCYPKAEISRLSASQIRNLNPVFGGSGPAL TGLRNLGNTCYMNSILQCLC
 NAPHLADYFNRCYQDDINRSNLLGHKGEVAEEFGIIMKALWTGQYRI SPKDFKITIGKINDQFAGYS
 QQDSQELLLFLMDGLHEDLNKADNRKRYKEENNDHLDDFKAAEAHWQKHKQLNESIIVALFQGGFKSTV
 QCLTCHKKSRTFEAFMYLSLPLASTSKCTLQDCLRLF SKEEKLTDNNRFYCSHCRARRDSLKKIEIWKL
 PPVLLVHLKRF SYDGRWKQLQTSVDFPLENLDLSQYVIGPKNNLKKYNLFSVSNHYGGLDGGHYTAYC
 KNAARQRWFKFDDHEVSDISVSSVKSSAAYILFYTSLGPRVTDVAT
 TRTRPLEMESDESGLPAMEIECRITGTLNGVEFELVGGGEGTPEQGRMTNKMSTKGALTFSPYLLSHV
 MGYGFYHFGTYP SGYENPFLHAINNGGYNTRIEKYEDGGVLHVSFSYRYEAGRVIGDFKVMGTGFPED
 SVIFTDKIIIRSNATVEHLHPMGDNDLDGSFTRTFLRDGGYSSVVD SHMHFKSAIHPSILQNGGPMFA
 FRRVEEDHSNTELGIVEYQHAFKTPDADAGEERV

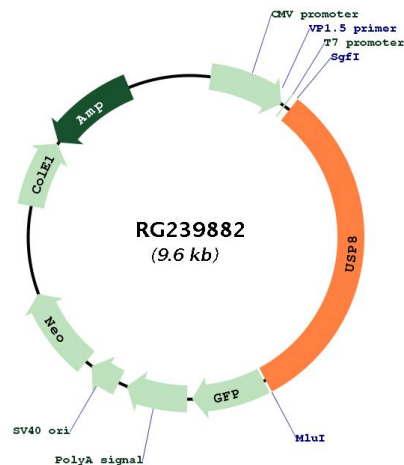
Restriction Sites: SgfI-MluI

Cloning Scheme:

Cloning sites used for ORF Shutting:



Plasmid Map:



ACCN: NM_001283049

ORF Size: 3036 bp

OTI Disclaimer: The molecular sequence of this clone aligns with the gene accession number as a point of reference only. However, individual transcript sequences of the same gene can differ through naturally occurring variations (e.g. polymorphisms), each with its own valid existence. This clone is substantially in agreement with the reference, but a complete review of all prevailing variants is recommended prior to use. [More info](#)

OTI Annotation: This clone was engineered to express the complete ORF with an expression tag. Expression varies depending on the nature of the gene.

Components: The ORF clone is ion-exchange column purified and shipped in a 2D barcoded Matrix tube containing 10ug of transfection-ready, dried plasmid DNA (reconstitute with 100 ul of water).

RefSeq: [NM_001283049.2](#)

RefSeq Size: 5250 bp

RefSeq ORF: 3039 bp

Locus ID: 9101

UniProt ID: [P40818](#)

Cytogenetics: 15q21.2

Protein Families: Druggable Genome, Protease

Protein Pathways: Endocytosis

MW: 115.5 kDa

Gene Summary:

This gene encodes a protein that belongs to the ubiquitin-specific processing protease family of proteins. The encoded protein is thought to regulate the morphology of the endosome by ubiquitination of proteins on this organelle and is involved in cargo sorting and membrane trafficking at the early endosome stage. This protein is required for the cell to enter the S phase of the cell cycle and also functions as a positive regulator in the Hedgehog signaling pathway in development. Pseudogenes of this gene are present on chromosomes 2 and 6. Alternate splicing results in multiple transcript variants. [provided by RefSeq, Sep 2013]