

## Product datasheet for **RG239878**

### TACC2 (NM\_001291878) Human Tagged ORF Clone

#### Product data:

Product Type:	Expression Plasmids
Product Name:	TACC2 (NM_001291878) Human Tagged ORF Clone
Tag:	TurboGFP
Symbol:	TACC2
Synonyms:	AZU-1; ECTACC
Mammalian Cell Selection:	Neomycin
Vector:	pCMV6-AC-GFP (PS100010)
E. coli Selection:	Ampicillin (100 ug/mL)



[View online »](#)

**ORF Nucleotide Sequence:**

>RG239878 representing NM\_001291878.  
 Blue=ORF Red=Cloning site Green=Tag(s)

```
GCTCGTTTAGTGAACCGTCAGAATTTTGTAAACGACTCACTATAGGGCGGCCGGGAATTCGTGCACTG
GATCCGGTACCGAGGAGATCTGCCGCCCGGATCGCC
ATGGGAGGGTCGCAGTCCCTGCAGCCAGCCCCAGCCAGCGACCTGAACCTGGAGGCTCCGAGGCAATG
AGTTCGGATTCTGAAGAGGCATTTGAGACCCCGAGTCAACGACCCCTGTCAAAGCTCCGCCAGCTCCA
CCCCACCACCCCGAAGTCATCCAGAACCCGAGGTCAGCACACAGCCACCCCGGAAGAACCAGGA
TGTGGTCTGAGACAGTCCCTGTCCCTGATGGCCACGGAGCGACTCGGTGGAAGGAAGTCCCTCCGT
CCCCCGTCACACTCCTTCTGCGCTCTTCGATGAAGACAAGCCGATAGCCAGCAGTGGGACTTACAAC
TTGGACTTTGACAACATTGAGCTTGTGGATACCTTTCAGACCTTGGAGCCTCGTGCCTCAGACGCTAAG
AATCAGGAGGGCAAAGTGAACACACGGAGGAAGTCCACGGATTCCGTCCCCTCTCTAAGTCTACACTG
TCCCGGTCGCTCAGCCTGCAAGCCAGTACTTTGATGGTCTTCTCCTCAGGCAATCCCGAGGCCGTG
GCCCTTGCCCGATGCATATAGCACGGTTCCAGCAGTCTTCTAGTACCCTTAAGCGAACTAAAAA
CCGAGGCCGCTTCCCTAAAAAAGAAACAGACCACCAAGAAACCCACAGAGACCCCGCAGTGAAGGAG
ACGCAACAGGAGCCAGATGAAGAGAGCCTTGTCGCCAGTGGGGAGAATCTAGCATCTGAGACGAAAACG
GAATCTGCCAAGACGGAAGGTCCTAGCCAGCCTTATTGGAGGAGACGCCCTTGAGCCCGCTGTGGGG
CCCAAAGCTGCCTGCCCTCTGGACTCAGAGAGTGCAGAAGGGGTTGTCCCCCGGCTTCTGGAGGTGGC
AGAGTGCAGAACTCACCCCTGTCCGGGAGGAAAACGCTGCCTCTTACCACGGCCCCGGAGGCAGGGGAG
GTAACCCCATCGGATAGCGGGGGCAAGAGGACTCTCCAGCCAAAGGGCTCTCCGTAAGGCTGGAGTTT
GACTATTCTGAGGACAAGAGTAGTTGGGACAACCAGCAGGAAAACCCCTCCTACCAAAAAGATAGGC
AAAAAGCCAGTTGCCAAAATGCCCTGAGGAGGCCAAAGATGAAAAGACACCCGAGAACTTGACAAC
ACTCTGCCTCACCTCCAGATCCCTGCTGAACCAATGACATCCCATTTGCTAAAGTACTTACACC
TTTGATATTGACAAGTGGGATGACCCCAATTTTAAACCCTTTTCTTCCACCTCAAAAATGCAGGAGTCT
CCCAAAGTGCCTCAACAATCATAACAATTTGACCCAGACACCTGTGATGAGTCCGTTGACCCCTTAAAG
ACATCCTCTAAGACCCCGAGCTCACCTTCTAAATCCCCAGCCTCCTTTGAGATCCCAGCCAGTGCTATG
GAAGCCAATGGAGTGGACGGGGATGGGTAAACAAGCCCGCAAGAAGAAGACGCCCTAAAGACG
ATGTTGAAGATGTGATGTCTGTGTCTCTGTTTGACACATTTAGGGTAAAAAGTCGCCAAAACGG
TCTCCTCTCTGATCCACCTTCCAGGACCCACCCAGCTGCTACACCAGAAACACCACAGTGATC
TCTGCGGTGGTCCACGCCACAGATGAGGAAAAGTGGCGGTACCAACCAGAAGTGGACGTGCATGACA
GTGGACCTAGAGGCTGACAAACAGGACTACCCGCAGCCCTCGGACCTGTCCACCTTTGTAACGAGACC
AAATTCAGTTCACCCACTGAGGAGTTGGATTACAGAACTCCTATGAAATTTGAATATATGGAGAAAATT
GGCTCCTCCTTACCTCAGGACGACGATGCCCGAAGAAGCAGGCCTTGTACCTTATGTTTGACACTTCT
CAGGAGAGCCCTGTCAAGTCATCTCCCGTCCGCATGTCCAGAGTCCCCGACGCCGTGTTACAGGGTCAAGT
TTTGAAGAGACTGAAGCCCTTGTGAACACTGCTGCGAAAAACAGCATCCTGTCCACGAGGACTGGCC
CCTAACCAAGAGTCACACTTGCAGGTGCCAGAGAAATCCTCCAGAAAGGAGCTGGAGGCCATGGGCTTG
GGCACCCCTTCCAGAACGATTGAAATTACAGCTCCCGAGGGCTCCTTGCCTCTGCTGACGCCCTCCTC
AGCAGGCTAGCTACCCCGTCTCTCTGTGGTCACTTGACTATCTGGAGCCCGACTTAGCAGAAAAG
AACCCCCACTATTCGCTCAGAACTCCAGAGAGAGGCTGCTCACCAACAGACGTCTCCATCTCCAAA
ACAGCCTTGTACTCCCGCATCGGGACCGCTGAGGTGGAGAAACCTGCAGGCCCTTCTGTTCCAGACGCC
GACCTGGACTCTGCCCTCCAGATCGCCAGAGCAGAGATCATAACCAAGGAGAGAGAGGTCTCAGAATGG
AAAGATAAATATGAAGAAAGCAGGCGGGAAGTGTGGAATGAGGAAAATAGTGGCCAGTATGAGAAG
ACCATCGCTCAGATGATAGAGGACGAACAGAGAGAGAAGTCACTCTCCACCAGACGGTGCAGCAGCTG
GTTCTGGAGAAGGAGCAAGCCCTGGCCGACCTGAACTCCGTGGAGAAGTCTCTGGCCGACCTTTCAGA
AGATATGAGAAGATGAAGGAGTCTAGAAGGCTTCCGCAAGAATGAAGAGGTGTTGAAGAGATGTGCG
CAGGAGTACCTGTCCCGGTGAAGAAGGAGGAGCAGAGGTACCAGGCCCTGAAGGTGCACCGGAGGAG
AAACTGGACAGGGCCAATGCTGAGATTGCTCAGGTTTCGAGGCAAGGCCACGAGGAGCAAGCCGCCAC
CAGGCCAGCCTGCGGAAGGAGCAGCTGCGAGTGGACGCCCTGAAAGGAGCCTGGAGCAGAAGAATAAA
GAAATAGAAGAACTACCAAGATTTGTGACGAAGTATTGCCAAAATGGGAAAAGC
ACGCGTACGCGGCCGCTCGAG - GFP Tag - GTTTAAAC
```

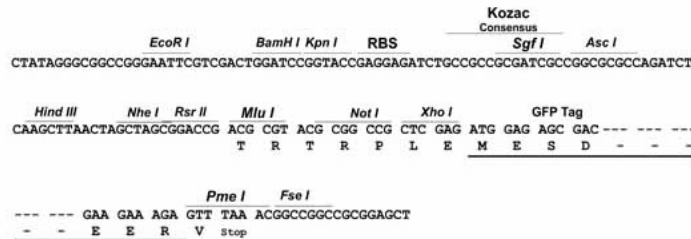
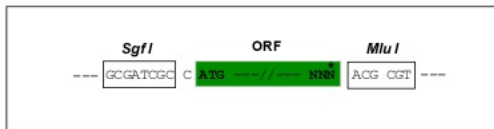
Protein Sequence: >Peptide sequence encoded by RG239878  
 Blue=ORF Red=Cloning site Green=Tag(s)

MGGSQLQPAPASDLNLEASEAMSSDSEEFETPESTTPVKAPPAPPPPPPEVIPEPEVSTQPPPEEPG  
 CGSETVPVDPGPRSDSVEGSPFRPPSHSFSAVFDEDKPIASSGTYNLDFDNIELVDTFQTLEPRASDAK  
 NQEGKVNTRRKSTDSVPI SKSTLSRSLSLQASDFDGASSGNPEAVALAPDAYSTGSSASSTLKRTKK  
 PRPPSLKKKQTTKKPTETPPVKETQQEPDEESL VPSGENLASETKTESAKTEGSPALLEETPLEPAVG  
 PKAACPLDSESAEGVPPASGGGRVQNSPPVGRKTLPLTTAPEAGEVTPSDSGGQEDSPAKGLSVRLEF  
 DYSEDKSSWDNQENPPPTKKIGKKPVAKMPLRRPKMKKTPEKLDNTPASPPRSPAEPNDIPIAKGTYT  
 FDIDKWDDPNFNPFSSTSKMQESPCLKPQQSYNFDPTDCDESVDPFKTSKTPSSPSKSPASFEIPASAM  
 EANGVDGDGLNPKAKKKKTPLKTMVEDVMSVCSLFDTRVKKSPKRSPLSDPPSQDPTAATPETPPVI  
 SAVVHATDEEKLAVTNQKWCMTVDLEADKQDYPQPSDLSTFVNETKFSSTEELDYRNSYIEIYMEKI  
 GSSLPQDDAPKKQALYLMFDTSQESPVKSSPVRMSEPTPCSGSSFEEALVNTAAKNQHPVPRGLA  
 PNQESHQVPEKSSQKELEAMGLTPSEAIETAPEGSFASADALLSRLAHPVSLCGALDYLEPDLAEK  
 NPPLFAQKLQREAAHPTDVSISKTALYSRIGTAEVEKPAGLLFQQPDLSALQIARAEIITKEREVSEW  
 KDKYEESSRREVMEMRKIVAEYEKTAQMIEDEQREKSVSHQTVQQLVLEKEQALADLNSVEKSLADLFR  
 RYKMKVEVLEGFKNEEVLKRCAQEYLSRVKKEEQRYQALKVHAEKLDLANAEIAQVRGKAQEQAAH  
 QASLRKEQLRVDALERTLEQKNKEIEELTKICDELIAMGKS  
 TRTRPLEMESDESGLPAMEIECRITGTLNGVEFELVGGEGTPEQGRMTNKMSTKGALTFSPYLLSHV  
 MGYGFYHFGTYPGSGYENPFLHAINNGGYNTRIEKYEDGGVLHVSFSYRYEAGRVIGDFKVMGTGFPED  
 SVIFTDKIIRSNATVEHLHPMGDNDLDGSFTRTFSLRDGGYSSVVDSHMHFKSAIHPSILQNGGPMFA  
 FRRVEEDHSNTELGIVEYQHAFKTPDADAGEERV

Restriction Sites: SgfI-MluI

Cloning Scheme:

Cloning sites used for ORF Shutting:

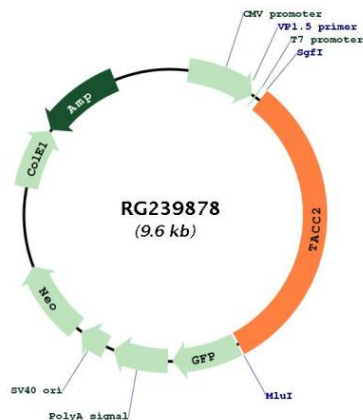


ACCN: NM\_001291878

ORF Size: 3024 bp

<b>OTI Disclaimer:</b>	The molecular sequence of this clone aligns with the gene accession number as a point of reference only. However, individual transcript sequences of the same gene can differ through naturally occurring variations (e.g. polymorphisms), each with its own valid existence. This clone is substantially in agreement with the reference, but a complete review of all prevailing variants is recommended prior to use. <a href="#">More info</a>
<b>OTI Annotation:</b>	This clone was engineered to express the complete ORF with an expression tag. Expression varies depending on the nature of the gene.
<b>Components:</b>	The ORF clone is ion-exchange column purified and shipped in a 2D barcoded Matrix tube containing 10ug of transfection-ready, dried plasmid DNA (reconstitute with 100 ul of water).
<b>RefSeq:</b>	<a href="#">NM_001291878.2</a>
<b>RefSeq Size:</b>	4036 bp
<b>RefSeq ORF:</b>	3027 bp
<b>Locus ID:</b>	10579
<b>UniProt ID:</b>	<a href="#">O95359</a>
<b>Cytogenetics:</b>	10q26.13
<b>MW:</b>	110.5 kDa
<b>Gene Summary:</b>	Transforming acidic coiled-coil proteins are a conserved family of centrosome- and microtubule-interacting proteins that are implicated in cancer. This gene encodes a protein that concentrates at centrosomes throughout the cell cycle. This gene lies within a chromosomal region associated with tumorigenesis. Expression of this gene is induced by erythropoietin and is thought to affect the progression of breast tumors. Several transcript variants encoding different isoforms have been found for this gene. [provided by RefSeq, Jul 2008]

### Product images:



Circular map for RG239878