

## Product datasheet for **RG239877**

### **Pumilio 2 (PUM2) (NM\_001282752) Human Tagged ORF Clone**

#### **Product data:**

Product Type:	Expression Plasmids
Product Name:	Pumilio 2 (PUM2) (NM_001282752) Human Tagged ORF Clone
Tag:	TurboGFP
Symbol:	Pumilio 2
Synonyms:	PUMH2; PUML2
Mammalian Cell Selection:	Neomycin
Vector:	pCMV6-AC-GFP (PS100010)
E. coli Selection:	Ampicillin (100 ug/mL)



[View online »](#)

**ORF Nucleotide Sequence:**

>RG239877 representing NM\_001282752.  
 Blue=ORF Red=Cloning site Green=Tag(s)

```

GCTCGTTTAGTGAACCGTCAGAATTTTGTAAACGACTCACTATAGGGCGGCCGGGAATTCGTGCACTG
GATCCGGTACCGAGGAGATCTGCCGCCCGGATCGCC
ATGTCCCAGCCTATTATGGTACAGAGAAGATCTGGACAGGGTTTTTCATGGAACAGTGAAGTAAATGCA
ATACTGTCTCCGGATCAGAAAGTGGAGCCTTGGTGTGAGCATGGTAGAATATGTATTAAGTTCTTCT
CCTGCTGATAAATTGGATTCTCGATTTAGGAAGGGAAATTTGGCACTAGAGATGCTGAAACAGATTGGA
CCTGAGAAAGGAGATCAAAAAGGCAAGGCTTCTCCATTTGAGGAGGACCAAAACAGAGATCTTAAACAA
GGAGATGATGATTCTAAAATAAATGGCAGAGGTTTGCCAAATGGAATGGATGCCGATTGCAAAGAT
TTAATCGTACTCCTGGAAGTCGTCAAGCCTCTCCAACCTGAAGTAGTTGAGCGCTTGGGCCCAATACT
AATCCCTCAGAAGGACTGGGCCCTTCTCTAATCTACAGCTAATAAACCACTTGTGAAGAATTTTCA
AATCCTGAAACTCAGAATCTGGATGCCATGGAACAAGTTGGTCTGGAATCCTTACAGTTTGACTATCCT
GGTAATCAGGTACCAATGGACTTTCAGGAGCTACTGTAGGCCTTTTTGACTACAATCCCAGCAGCAG
CTCTTTCAGAGGACTAATGCACTAACAGTTCAACAGTAACTGCAGCTCAACAGCAGCAATATGCATTA
GCAGCAGCTCAGCAGCCACATATAGCTGGTGTATTCTCAGCAGGCCTTGCTCCAGCTGCATTTGTGCCA
AATCCATACATTATTAGTGCTGCTCCTCCAGGGACCGATCCGTATACTGCAGCAGGATTGGCTGCAGCA
GCTACATTAGCAGGTCCAGCAGTGGTCCACCTCAGTATTACGGCGTTCCATGGGGGGTGTATCCAGCC
AACTTATTTTCAGCAGCAAGCTGCAGCTGCCGCAAAATAACACAGCCAGTCAGCAAGCAGCATCACAAGCT
CAGCCTGGACAGCAACAGGTTCTCCGTGCTGGAGCAGGTGAGCGTCTTACTCCCAATCAGGGTCAG
CAAGGGCAGCAAGCAGAATCACTTGCAGCAGTGCAGCAGCAATCCAACATTGGCTTTTGGTCAAGGT
CTTGCTACTGGCATGCCAGGCTATCAAGTACTAGCTCCAACCTGCCTATTATGATCAGACTGGTGCCTTA
GTGGTTGGCCCTGGAGCAAGGACTGGCCTTGGAGTCCAGTTCGGTTAATGGCTCCAACACTGTTTTTA
ATTAGTTCAGCAGCAGCAAGCTGCAGCAGCAGCAGCTGGAGGAAGTGAAGTACGCTTACAGCTTACAGGC
AGCACAATGGTCTGTTTCGGCCAATTGCACTCAGCCACCACAGCAGCAACAGCAGCAAGCAAGCAACT
AATCTGCAATCTAATTCATTTTATGGAAGCAGTCTTTTACTAATAGCTCCCAGAGTAGTCTTTATTT
TCTCATGGACCTGGTCAACCTGGAAGTACATCTTTGGCTTTGGAAGTGGTAACTCTTTGGGTGCTGCT
ATAGGCTCAGCCCTCAGTGGATTTGGTTCATCAGTTGGCAGTCTGCAAGTAGTAGTCCACAAGGAGA
GAGTCTCTATCTACTAGCTCTGACTTGTACAAAAGATCTAGTAGCAGCCTAGCACCCATAGGGCAACCA
TTTTACAATAGTCTGGGATTTTCTCCTCTCCAAGTCCAATAGGCATGCCTTGCCAAGCCAACTCCA
GGACATTCACCTACGCCACCGCCATCATTTCATCACATGGATCCTCATCCAGTTTGCATTTAGGAGGA
CTGACAAATGGTAGTGGTCGATATATCTCTGCAGCACCTGGAGCAGAAGCAAAATATCGAAGTGCCTCA
AGCACTCCAGTCTATTTAGCTCCAGCAGCCAGCTCTTCTCCTTCCCGGCTTCGGTATAATAGGTCT
GATATTATGCCTTCTGGCCGAGTAGATTATTGGAAGATTTAGAAAACAACCGCTTCCCAAACCTTCAG
CTTAGAGACTTGATTGGACATATAGTTGAGTTTTCTCAAGACCAGCATGGTTCTAGATTCAACAGCAA
AACTAGAGAGAGCTACTCCAGCTGAGCGACAGATGGTATTTAATGAAATTCGCAAGCAGCCTATCAA
TTAATGACTGATGTTTTGGCAACTATGTTATACAGAAGTTTTTTGAGTTGGGAGTCTGGATCAAAAA
TTAGCCCTGGCTACTCGTATTCGTGGTCATGTTCTACCTTAGCCTTGCAGATGTATGGCTGCCCGGTT
ATTCAGAAAGCATTAGAATCTATTTCTTCTGACCAGCAGAGTGAATGGTAAAGGAGCTGGATGGTCAT
GTGCTCAAATGTGTGAAAGATCAGAATGGAAACCATGTTGTACAAAAATGTATCGAATGTGTTCAAGCCA
CAGTCACTACAGTTCATCATTGATGCTTTCAAGGGACAAGTATTTGTGCTTTCAACTCATCCTTATGGC
TGCAGAGTAATTCAGCGCATCCTAGAGCATTGCACTGCAGAACAGACCTTACCTATCTTAGAAGAACTC
CACCAACATACAGAGCAGTTGGTACAGGATCAGTATGGCAATTATGTTATTCAGCATGACTGGAACAC
GGTCGACCTGAAGACAAGAGCAAAATGTTTTCCGAAATCAGGGGAAAGTTTTAGCCCTGAGTCAACAC
AAATTTGCCAGCAATGTAGTAGAAAAGTGTGTTACTCATGCCTCCCGTGTGAGAGAGCTTTACTGATT
GACGAGGTTTGTGCCAGAATGATGGTCTCACAGTGCCTTATACACCATGATGAAGGACCAGTATGCC
AATTACGTGGTTCAAAGATGATTGATATGGCTGAACCTGCTCAGAGAAAGATAATCATGCACAAGATT
CGACCTCACATTACTACTTTGCGCAAAATACACATACGGGAAGCATATACTGGCCAAGTTGAAAAAGTAT
TATTTGAAGAATAGCCCCGACCTAGGACCTATTGGAGGACCACCAATGGAATGCTG
ACGCGTACGCGGCCGCTCGAG - GFP Tag - GTTTAAAC
  
```

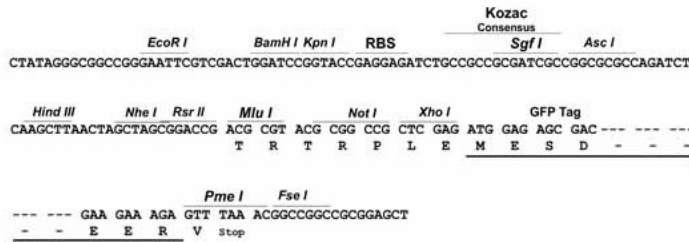
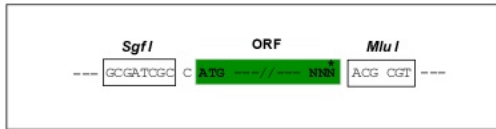
**Protein Sequence:** >Peptide sequence encoded by RG239877  
 Blue=ORF Red=Cloning site Green=Tag(s)

MSQPIMVQRRSGQGFHGNSEVNAILSPRSESGGLGVMVEYVLS SSPADKLD SFRFRKGNFGTRDAETDG  
 PEKGDQK GKASPFEEQNRDLKQGD DDDSK INGRGLPNGMDADCKDFNRTPGSRQASPTVEVRLGPNT  
 NPSEGLGPLNPNTANKPLVEEFSNPETQNL DAMEQVGL ESLQFDYPGNQVPM DSSGATVGLFDYNSQQQ  
 LFQRTNALTVQQLTAAQQQYALAAAQQPHIAGVFSAGLAPAAFVNPYIISAAPPGTDPTYAAGLAAA  
 ATLAGPAVVPQYYGVPWGVYPANLFQQAAAAANNTASQQAASQAQPGQQVLRAGAGQRPLTPNQGQ  
 QGQQAESLAAAAANPTLAFGQGLATGMPGYQVLA PTAYYDQTGALVVGPGARTGLGAPVRLMAPTPVL  
 ISSAAAQAAAAAAGGTASSLTGSTNGLFRPIGTQPPQQQQQPSTNLQSN SFYGSSSLTNSQS SLSL  
 SHGPGQPGSTSLGFGSGNSLGAAGSALSGFGSSVGSASSA TRRESLSTSSDL YKRSSSLAPIGQP  
 FYNLSLGFSSSPSIGMPLPSQTPGHSLTPPSSL SHGSSSLHLGGLTNGSGRYISAAPGAEAKYRSAS  
 STSSLFSSSSQLFPPSRLRYNRSDIMPSGRSRLLED FRNRRFPNLQLRDLIGHIVEFSQDQHGSRFIQQ  
 KLERATPAERQMFNEILQAAYQLMTDVF GNYVIQKFFEF GSLDQKLALATRIRGHVLP LALQMYGCRV  
 IQKALESISSDQQSEMVKELDGHV LKCVKDQNGNHV VQKCI ECVQPQSLQFIIDAFKQGVFV LSTHPYG  
 CRVIQRILEHCTAEQTLPILEELHQHTEQLVQDQY GNYVIQHVLEHGRPEDKSKIYSEIRKVLAL SQH  
 KFASNVVEKCVTHASRAERALLIDEVCCQNDGPHSALY TMMKDQYANYVVQK MIDMAEPAQRKIIMHKI  
 RPHITTLRKYTYGKHLAKLEKYLLKNSPDLGP IGGPPNGML  
 TRTRPLEMESDESGLPAMEIECRITGTLNGVEFELVGGEGTPEQGRMTNKMKSTKGALTFSPYLLSHV  
 MGYGFYHFGTYP SGYENPFLHAINNGGYNTRIEKYEDGGVLHVSFSYRYEAGRVIGDFKVMGTGFPED  
 SVIFTDKIIRSNATVEHLHPMGDNDLDGSFTRTFSLRDGGYSSVVD SHMHFKSAIHPSILQNGGPMFA  
 FRRVEEDHSNTELGIVEYQHAFKTPDADAGEERV

**Restriction Sites:** SgfI-MluI

**Cloning Scheme:**

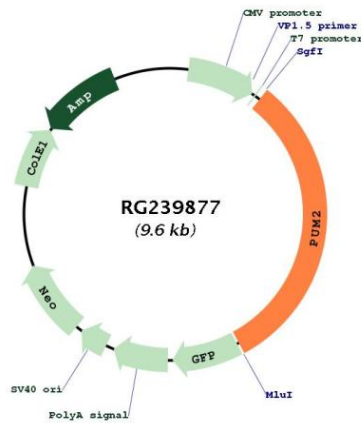
Cloning sites used for ORF Shutting:



**ACCN:** NM\_001282752

**ORF Size:** 3024 bp

<b>OTI Disclaimer:</b>	The molecular sequence of this clone aligns with the gene accession number as a point of reference only. However, individual transcript sequences of the same gene can differ through naturally occurring variations (e.g. polymorphisms), each with its own valid existence. This clone is substantially in agreement with the reference, but a complete review of all prevailing variants is recommended prior to use. <a href="#">More info</a>
<b>OTI Annotation:</b>	This clone was engineered to express the complete ORF with an expression tag. Expression varies depending on the nature of the gene.
<b>Components:</b>	The ORF clone is ion-exchange column purified and shipped in a 2D barcoded Matrix tube containing 10ug of transfection-ready, dried plasmid DNA (reconstitute with 100 ul of water).
<b>RefSeq:</b>	<a href="#">NM_001282752.2</a>
<b>RefSeq Size:</b>	6251 bp
<b>RefSeq ORF:</b>	3027 bp
<b>Locus ID:</b>	23369
<b>UniProt ID:</b>	<a href="#">Q8TB72</a>
<b>Cytogenetics:</b>	2p24.1
<b>MW:</b>	108.1 kDa
<b>Gene Summary:</b>	This gene encodes a protein that belongs to a family of RNA-binding proteins. The encoded protein functions as a translational repressor during embryonic development and cell differentiation. This protein is also thought to be a positive regulator of cell proliferation in adipose-derived stem cells. Alternate splicing results in multiple transcript variants. [provided by RefSeq, Sep 2013]

**Product images:**


Circular map for RG239877