

Product datasheet for **RG239876**

PIB5PA (INPP5J) (NM_001284285) Human Tagged ORF Clone

Product data:

Product Type:	Expression Plasmids
Product Name:	PIB5PA (INPP5J) (NM_001284285) Human Tagged ORF Clone
Tag:	TurboGFP
Symbol:	INPP5J
Synonyms:	INPP5; PIB5PA; PIPP
Mammalian Cell Selection:	Neomycin
Vector:	pCMV6-AC-GFP (PS100010)
E. coli Selection:	Ampicillin (100 ug/mL)



[View online »](#)

ORF Nucleotide Sequence:

>RG239876 representing NM_001284285.
 Blue=ORF Red=Cloning site Green=Tag(s)

```

GCTCGTTAGTGAACCGTCAGAATTTTGTAAACGACTCACTATAGGGCGGCCGGGAATTCGTGACTG
GATCCGGTACCGAGGAGATCTGCCGCCCGGATCGCC
ATGGAGGGCCAGAGCAGCAGGGGCAGCAGGAGGCCAGGGACCCGGGCTGGCCTGGGTTCCCTGCCCATG
CCCCAGGGTGTTCGCCAAACTGGGGCACCTCCAAGGTGGACTCAAGTTTTTCAGCTCCAGCAAAGAAG
AACGCAGCCCTAGGACCCTCGGAACCAAGGTTGGCTCTGGCACCTGTAGGGCCACGGGCAGCTATGTCA
GTTTCTCGGAAGGACCGAGGCTGGCTCTGGCATCTCCCGACCAATCCTGGCTCCTACTGTACCCTT
GAAGGGCAGAAAACAGCTACTGCCACCGCAGCTCCAGCCTGGCCCAACATCTGTGGGCCAGTGGTG
ATGTCTGCCTCAGCTGGACCAAAGCCTCCCCAGCGACCACAGGCTCAGTTCTGGCTCCGACGTCCCTG
GGGCTGGTGTGCTGCCTCAGCAGGGCCAAGATCTCCCCAGTCACCCTGGGGCCCAATCTGGCCCA
ACCTCCAGAGACCAGAAGCAGGAGCCACCTGCCTCCGTGGGACCAAGCCAACACTGGCAGCCTCTGGC
CTGAGCCTGGCCCTGGCTTCTGAGGAGCAGCCCCAGAACTCCCCTCCACCCCTTCCCGGTGCCAGT
CCAGTTCTGTCTCAACTCAGGAACAGGCCCTGGCTCCAGCATCCACGGCATCAGGCGCAGCCTCTGTG
GGACAGACATCAGCTAGAAAGAGGGATGCCCCAGCCCCTAGACCTCTCCCTGCTTCTGAGGGGCATCTC
CAGCCTCCAGCTCAGACATCTGGTCTACAGGCTCCCCACCTGCATCCAAACCTCCCCAGACCCTCGG
CTCTCCCCCTCTTCCGAGCCCGGCTGAGGCCCTCCACAGCAGCCCTGAGGATCCTGTTTTGCCACGG
CCACCCAGACCTTGCCCTTGGATGTGGGCCAGGGTCTTCAGAGCCTGGCACTCACTCCCTGGACTT
CTGTCCCCACCTTCCGGCTGGGGCCCCCTCAGGCCAGACTGTGCCCCACCTCTGCCAAAGCCACCC
CGATCACCCAGCCGTTCCCAAGCCACTCCCCGAATCGCTCTCCCTGTGTTCGCCAGCCCTGCATG
GCCCTCCAAGGCTTGGCACACAGAGTACAGGGCCTGGCAGGTGCCTGAGCCCCAACCTTCAGGCCCAA
GAAGCCCAGCCCAAGTACCACCTCTCTTCTACATCCACCCTGTATCCTCCCTTGGTCACTCAG
CCTACCTGGAAGAGCGACCCCGGCTTCCGGATCACTGTGGTCACATGGAACGTGGGCATGCCATGCC
CCAGACGATGTCACATCCCTCCTCCACCTGGGCGGTGGTGACGACAGCGACGGCGCAGACATGATGCC
ATAGGGTTGCAGGAAGTGAACCTCATGCTCAACAAGCGACTCAAGGACGCCCTTTCACGGACAGTGG
AGTGAGCTGTTTATGGATGCGCTAGGGCCCTTCAACTTCGTGCTGGTGGTTCGGTGAGGATGCAGGGT
GTCATCCTGTGCTGTTCCGCAAGTACTACCACCTGCCCTTCTGCGAGACGTGCAGACCGACTGCACG
CGCACTGGCCTGGGCGGCTACTGGGTAACAAGGGTGGCGTGAGCGTGCCTGGCGCCTTCCGGGCAC
ATGCTCTGCTTCTGAAGTCCACTTGCCTGCGCATATGGACAAGGCGGAGCAGCGCAAAGACAACCTTC
CAGACCATCCTCAGCCTCCAGCAGTTCGAAGGGCCGGGCGCACAGGGCATCCTGGATCATGACCTCGTG
TTCTGTTTCGGGGACCTGAACCTCCGCATTGAGAGCTATGACCTGCACTTTGTCAAGTTTCCCATCGAC
AGTGACCAGCTCCATCAGCTCTGGGAGAAGGACCAGCTCAACATGGCCAAGAACCTGGCCCACTCTG
AAGGGCTTTCAGGAGGGGCCCTCAACTTCGCTCCACCTTCAAGTTTGTATGTGGGTACCAACAATAC
GATACCAAGTGCAGAAACGGAAGCCAGCTTGGACAGACCGTATCCTATGGAAGGTCAAGGCTCCAGGT
GGGGTCCCAGCCCTCAGGACGGAAGAGCCACCGACTCCAGGTGACGCAGCACAGCTACCGCAGCCAC
ATGGAATACACAGTCAGCGACCAAGCCTGTGGCTGCCAGTTCCTCCTGCAGTTTGCCTTCAGGGAC
GACATGCCACTGGTGGGCTGGAGGTGGCAGATGAGTGGTGGCGCCGAGCAGGCGGTGGTGGGTAC
CGCATGGAAACAGTGTTCGCCCAGCTCCTGGGACTGGATCGGCTTATACCGGGTGGGTTCCGGCCAT
TGCAAGGACTATGTGGCTTATGTCTGGGCAACATGAAGATGTGGATGGGAATACCTACAGGTAAACA
TTCAGTGAGGAATCACTGCCAAGGGCCATGGAGACTTATCCTGGGCTACTATAGTCACAACCACAGC
ATCCTCATCGGCATCACTGAACCCTTCCAGATCTCGTGCCTTCTCGGAGTTGGCCAGCAGCAGCACA
GACAGCTCAGGCACCAGCTCAGAGGGAGAGGATGACAGCACACTGGAGTCTTGCACCCAAGTCCCGC
AGCCCCAGTCTGGCAAGTCCAAGCGACACCGCAGCCGACGCCGGGACTGGCCAGGTTCCCTGGGCTT
GCCCTACGGCCCTCATCCGTGAACGCCGTGGTCCAGCCGTAGCCCTCACCCAGAGCCGCCCTG
TCCGAGTGGCTCCTGACAGGAGCAGTAATGGCAGCAGCCGGGCGAGTAGTGAAGAGGGGCCCTCTGGG
TTGCTTGGCCCTGGGCTTCCCACCAGCTGTGCCTCGAAGCCTGGGCTTGTGCCGCCCTTGGCCTA
GAGACTGTAGACCCTGGTGGTGGTGGCTCTGGGACCTGATCGGAGGCCCTGGCGCCCAACAGCCTG
TCTCTAGTCCCCAGGGCCATCGGGGGCTGGAGGAAGGGGGCTGGGGCC
ACGCGTACGCGGCCGCTCGAG - GFP Tag - GTTTAAAC
  
```

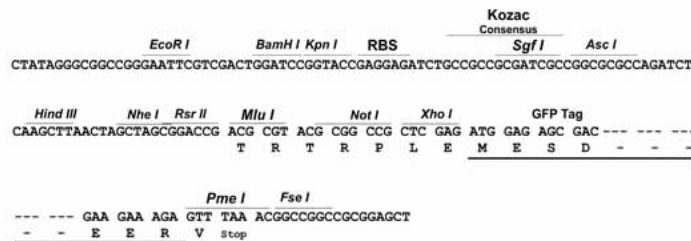
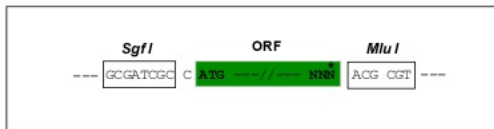
Protein Sequence: >Peptide sequence encoded by RG239876
 Blue=ORF Red=Cloning site Green=Tag(s)

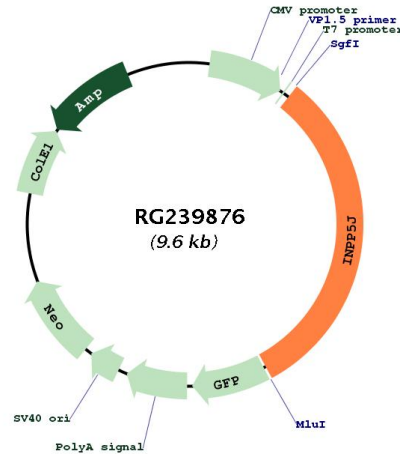
MEGQSSRGRSRPGRAGLGLSLPMPQGVQGTGAPSKVDSSFQLPAKKNAALGPSEPRALAPVGPRAAMS
 ASSEGPRALASPRPILAPLCTPEGQKTATAHRSSSLAPTSVGQLVMSASAGPKPPPATTGSVLAPTSL
 GLVMPASAGPRSPVTLGNLAPTSRDQKQEPASVGPKPTLAASGLSLALASEEQPELPSTPSPVPS
 PVLSPTEQEQALAPASTASGAASVQTSARKRDAPAPRPLPASEGHLQPPAQTSGPTGSPPCIQTSPDPR
 LSPSFRARPEALHSSPEDPVLPRPPQTLPLDVGQGPSEPETHSPGLLSPTFRPGAPSGQTVPPPLPKPP
 RSPSRSPSHSPNRSPCVPPAPDMALPRLGTQSTGPGRCLSPNLQAQEAAPVTTSSSTSTLSSSPWSAQ
 PTWKSDPGFRITVVTWNVGTAMPDDVTSLHLGGDDSDGADMIAGLQEVNSMLNKRKDALFTDQW
 SELFMDALGPFNFVLVSSVRMQGVILLFAYHYLPFLRDVQTDCTRTGLGGYWGNGGGVSVRLAAFVGH
 MLCFLNCHLPAHMDKAEQRKDNFQITLSLQQFQGPQAQGILDHDLVFWGDLNFRIESYDLHFVKFAID
 SDQLHQLWEKDQLNMAKNTWPIKGFQEGPLNFAPTFKFDVGTNKYDTSAKKRKPAWTDRLWKVKAPG
 GGPSPSGRKSRLQVTQHSYRSHMEYTVSDHKPVAAQFLQAFRDDMPLVRLEVADEWVRPEQAVVRY
 RMETV FARSSWDWIGLYRVGFRHCKDYVAVWAKHEDVDGNTYQVTFSEESLPGKHGDFILGYSHNHS
 ILIGITEPFQISLPSEELASSSTDSSGTSSEGEDDSTLELLAPKSRSPSPGKSKRHRSRSPGLARFPGL
 ALRPSSRERRGASRSPSPQSRRLSRVAPDRSSNGSSRGSSEEGPSGLPGWAFPPAVPRSLGLPALRL
 ETVDPPGGGSGWPDREALAPNSLSPSPQGHRLGEEGLGP
 TRTRPLEMESDESGLPAMEIECRITGTLNGVEFELVGGEGTPEQGRMTNKMSTKGALTFSPYLLSHV
 MGYGFYHFGTYPSGYENPFLHAINNGGYNTRIEKYEDGGVLHVSFSYRYEAGRVIGDFKVMGTGFPED
 SVIFTDKIIRSNATVEHLHPMGDNDLDGSFTRTFSLRDGGYSSVVDSHMHFKSAIHPSILQNGGPMFA
 FRRVEEDHSNTELGIVEYQHAFKTPDADAGEERV

Restriction Sites: SgfI-MluI

Cloning Scheme:

Cloning sites used for ORF Shutting:



Plasmid Map:


ACCN: NM_001284285

ORF Size: 3018 bp

OTI Disclaimer: The molecular sequence of this clone aligns with the gene accession number as a point of reference only. However, individual transcript sequences of the same gene can differ through naturally occurring variations (e.g. polymorphisms), each with its own valid existence. This clone is substantially in agreement with the reference, but a complete review of all prevailing variants is recommended prior to use. [More info](#)

OTI Annotation: This clone was engineered to express the complete ORF with an expression tag. Expression varies depending on the nature of the gene.

Components: The ORF clone is ion-exchange column purified and shipped in a 2D barcoded Matrix tube containing 10ug of transfection-ready, dried plasmid DNA (reconstitute with 100 ul of water).

RefSeq: [NM_001284285.2](#)

RefSeq Size: 3407 bp

RefSeq ORF: 3021 bp

Locus ID: 27124

UniProt ID: [Q15735](#)

Cytogenetics: 22q12.2

Protein Families: Druggable Genome

Protein Pathways: Inositol phosphate metabolism, Metabolic pathways, Phosphatidylinositol signaling system

MW: 107.6 kDa

Gene Summary:

Inositol 5-phosphatase, which converts inositol 1,4,5-trisphosphate to inositol 1,4-bisphosphate. Also converts phosphatidylinositol 4,5-bisphosphate to phosphatidylinositol 4-phosphate and inositol 1,3,4,5-tetrakisphosphate to inositol 1,3,4-trisphosphate in vitro. May be involved in modulation of the function of inositol and phosphatidylinositol polyphosphate-binding proteins that are present at membranes ruffles (By similarity).[UniProtKB/Swiss-Prot Function]