

## Product datasheet for **RG239874**

### **SORBS1 (NM\_001290296) Human Tagged ORF Clone**

#### **Product data:**

Product Type:	Expression Plasmids
Product Name:	SORBS1 (NM_001290296) Human Tagged ORF Clone
Tag:	TurboGFP
Symbol:	SORBS1
Synonyms:	CAP; FLAF2; R85FL; SH3D5; SH3P12; SORB1
Mammalian Cell Selection:	Neomycin
Vector:	pCMV6-AC-GFP (PS100010)
E. coli Selection:	Ampicillin (100 ug/mL)



[View online »](#)

**ORF Nucleotide Sequence:**

>RG239874 representing NM\_001290296.  
 Blue=ORF Red=Cloning site Green=Tag(s)

```
GCTCGTTTAGTGAACCGTCAGAATTTTGTAAACGACTCACTATAGGGCGGCCGGGAATTCGTGACTG
GATCCGGTACCGAGGAGATCTGCCGCCCGGATCGCC
ATGAGTTCTGAATGTGATGGTGGTTCCAAAGCTGTGATGAATGGCTTGGCACCTGGCAGCAATGGGCAA
GACAAAGCAACTGCCGACCCCTTACGCGCACGCTCTATTTCTGCTGTTAAAAATCATTCTGTGAAGACA
GTGAAAAACGCCTCAGGCCTAGTTCTCCCTACAGACATGGATCCTACAAAAATCTGCACTGGGAAGGGA
GCGGTGACTCTCCGGGCCTCGTCTTCTACAGGAAACCCCAAGCAGTAGCCCTGCGAGCCCTCAGGAA
ACCCGGCAACACGAAAGCAAACCAGATGAGTGGAGGCTTTCTTCCAGTGTGATGCCAATGGAAATGCC
CAGCCCTCTTCACTCGCTGCCAAGGGCTACAGAAGTGTGCATCCCAACCTTCTTCTGACAAGTCCCAG
GATGCCACTTCTCCAGTGCAGCCAGCCGAGGTAATAGTTGTCCCTCTACCTGGTTAATACTGAC
AGAGGGCAAGAAGGCACTGCCAGACCTCCAACACCTCTGGGGCCTTTGGCTGCGTCCCACAATCCCA
GCGACTGCCTCTGCCGCCTCACCTCTGACCTTCCCGACTCTAGATGATTTCAATCCCCTCATCTGCAG
AGGTGGCCCCACACAGCCAGCCAGCCCGCCTCTGGCTCCTTTGCCCCATTAGCCAGACGCCACCA
TCCTTCTCACCACCACCTCCGCTGGTCCCTCTGCCCCGAGGACCTCCGCAGAGTCTCGGAGCCTGAC
CTCACGGGAGCTGTTTCGAGTACCGATTCCAGTCTCTACTAAATGAAGTTTCTTCTCCCTTATTGGA
ACTGATCCCAAGCCTTTCCATCAGTTAGCAAGCCTTCATCCGCCTATCCCTCCACAACGATTGTCAAT
CCTACTATTGTGCTCTTGCAACACAATCGAAGACGAAAAACGACTCAGTAGCCTTTCAGATCCTGTGTC
TCAGAAAGAAGAGTGGGAGAGCAGGACTCAGCACCAACCCAGGAAAAACCCACCTCACCTGGCAAGGCT
ATTGAAAAAGAGCAAAGGATGACAGTAGGCGGGTGGTGAAGAGCACTCAGGACTTAAGCGATGTTTCC
ATGGATGAAGTGGCATCCACTCCGGAACACTGAGAGATCAAAGACTGGTACAAGACTATGTTTAAA
CAGATCCACAAACTGAACAGAGACACTCTGAAGAAAACCCCTTATTTCCCTACGTACAAATCCCTGAA
CTTCTGAAATCCAGCAAACCTCCGAAGATGATGATTCAGATCTGTACTCTCCAGATACTCATTTTCT
GAAGACACAAAATCTCCCTTTCTGTGCCTCGCTCAAAAAGTGAAGTGAAGTACATTGATGGTGAGAAG
GTAGTCAAGAGGTGCGCCACACTACCCCTCCAGCCCGCTCTTCTCACTGAAGTCAAGCTCAGAAAAGA
AATGACTGGGAACCCCCAGATAAGAAAGTAGACACAAGAAAATATCGTGCAGAGCCCAAGAGCATTAC
GAATATCAGCCTGGCAAGTCTTCCGTTCTGACCAACGAAAAGATGAGTGGGATATAAGCCAGAAGAG
ATAGATTTAAAGAATGAACCTTGGTATAAATTCTTTTCGGAATTGGAGTTTGGGAAACCGCTCCCAAA
AAGATATGGGATTATACTCCTGGAGACTGCTCTATCCTTCTAGAGAGGATAGAAAGACTAATCTAGAC
AAAGATCTCAGCCTCTGCCAGACAGAGTTAGAGGCAGATTTAGAAAAAATGGAGACGCTTAATAAGCA
CCAGTGCAAACGTGCCACAGAGCTCAGCCATCAGCCCTACTCCGGAATTTCTTCCAGAGACTCCTGGA
TATATATATTCTTCCAACCTCCATGCAGTGAAGAGGGAATCAGACGGGGCTCCTGGGGATCTCACTAGC
TTGGAGAATGAGAGACAAATTTATAAAAGTGTCTTGAAGGTGGTGCATCCCTCTTCCAGGGCTGAGT
GGGCTCAAGCGACCATCCAGCTCTGCTTCCACTAAAGATTCAGAAATCGCCAAGACATTTTATACCAGCT
GATTACTTGGAATCCACGGAAGAATTTATTCGAAGACGTGATGATGATAAAGAGAAAATTTAGCGGAC
CAGAGACGACTTAAACGCGAGCAAGAAGAGGCTGATATTGCAGCTCGACGCCACACAGGCGTCATTCCG
ACGCACCATCAGTTTACTACTAATGAGCGCTTTGGGACCTCCTCAATATAGACGATACTGCAAAAAGG
AAATCTGGGTGAGAGATGAGACTGCCAGAGCCAAATTTGACTTTAAAGCTCAGACACTAAAGGAGCTT
CCTCTGCAGAAGGGAGATATTGTTTACATTTATAAGCAAATTGATCAGAACTGGTATGAAGGAGAACAC
CACGGCCGGGTGGGAATCTTCCACGCACCTACATCGAGCTTCTTCTCCTGCTGAGAAGGCACAGCCC
AAAAAGTTGACACCAGTGCAGGTTTTGGAATATGGAGAAGCTATTGCTAAGTTTAACTTTAATGGTGAT
ACACAAGTAGAAATGTCTTTCAGAAAGGTGAGAGGATCACACTGCTCCGGCAGGTAGATGAGAAGTGG
TACGAAGGGAGGATCCCGGGGACATCCCGACAAGGCATCTTCCCATCACCTACGTGGATGTGATCAAG
CGACCACTGGTAAAAACCTGTGGATTACATGGACCTGCCTTTCTCCTCCTCCCAAGTGCAGTGCC
ACTGCAAGCCCACAGCAACCTCAAGCCCAGCAGGAAGAGTCAACCCGACAGGAGTCAAACCTCACAA
GATTTATTTAGCTATCAAGCATTATATAGCTATATACCACAGAATGATGATGAGTTGGAAGTCCCGGAT
GGAGATATCGTTGATGTCATGGAATAATGTGACGATGGATGGTTTGTGGTACTTCAAGAAGGACAAAG
CAGTTTGGTACTTTTCCAGGCAACTATGTAACCTTTGTATCTA
ACGCGTACGCGGCCGCTCGAG - GFP Tag - GTTTAAAC
```

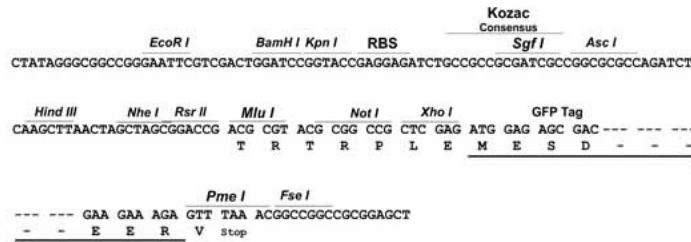
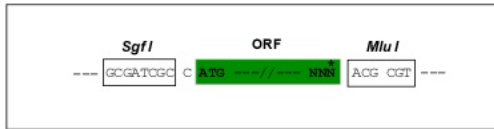
**Protein Sequence:** >Peptide sequence encoded by RG239874  
 Blue=ORF Red=Cloning site Green=Tag(s)

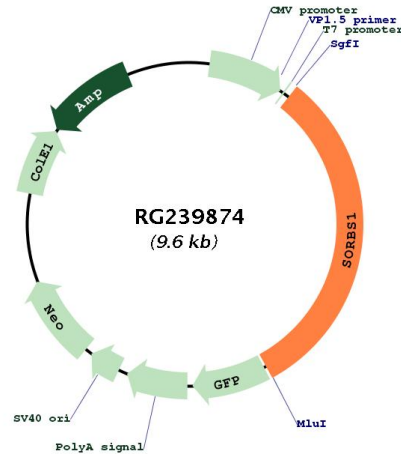
MSSECDGGSKAVMNGLAPGSNGQDKATADPLRARSISAVKIIPVKTVKNASGLVLPTDMDPTKICTGKG  
 AVTLRASSYRETPSSSPASPQETRQHEKPDWRLSSADANGNAQPSSLAAGYRSVHPNLPSDKSQ  
 DATSSSAAQPEVIVVPLYL VNTDRGQEGTARPP TPLGPGCVPTIPATASAASPLTFPTLDDFIPPHLQ  
 RWP HHSQPARASGSFAPISQT PPSF SPPPPLVPPAPEDLRRVSEPDLTGAVSSTDSSPLLNEVSSSLIG  
 TDSQAFPSVSKPSSAYPSTTI VNP TIVLLQHNREQQKRLSSLSDPVSERRVGEQDSAPTQEKPTSPGKA  
 IEKRAKDDSRVVKSTQDLSDVSMDEVGIPLRNTERSKDWKYTMFKQIHKLNDRDTPPENPYFPTYKFPE  
 LPEIQQTSEDDSDLYSPRYSFSEDTKSPLSVPRSKSEMSYIDGKVVKRSATLPLPARSSSLKSSSER  
 NDWEPPDKKVDTRKYRAEPKSIYEYQPGKSSVL TNEKMSRDISPEEIDLKNEPWYKFFSELEFGKPPPK  
 KIWDYTPGDCSILPREDRKTNLDKDLSL CQTELEADLEKMETLNKAPSANVPQSSAISPTPEISSETPG  
 YIYSSNFHAVKRES DGAPGDLTSLENERQIYKSVLEGGDIPLQGLSGLKRPSSSASTKDSESPRHFIPA  
 DYLESTEEFIRRRHDDKEKLLADQRR LKREQEEADIAARRHTGVIP THHQFITNERFGDLLNIDDTAKR  
 KSGSEMRPARAKFDFKAQTLKELPLQKGDIVYIYKQIDQNWYEGEHHRVGI FPRTYIELPPAEKAQP  
 KKLTPVQVLEYGEAIKFNFNQDQVEMSF RKGERITLLRQVDENWYEGRI PGT SRQGFIPITYVDVIK  
 RPLVKNPVDYMDLPFSSPSRSATASPQQPQAQRRVTPDRSQT SQDLFSYQALYSYIPQNDLELELRD  
 GDIVDMEKDGGWFGVTSRRTKQFGTFPGNYVKPLYL  
 TRTRPLEMESDESGLPAMEIECRITGTLNGVEFELVGGEGTPEQGRMTNKMSTKGALTFSPYLLSHV  
 MGYGFYHFGTYP SGYENPFLHAINNGGYNTRIEKYEDGGVLHVSFSYRYEAGRVIGDFKVMGTGFPED  
 SVIFTDKIIRSNATVEHLHPMGDNDLDGSFTRTFSLRDGGYSSVVD SHMHFKSAIHP SILQNGGPMFA  
 FRRVEEDHSNTELGIVEYQHAFKTPDADAGEERV

**Restriction Sites:** Sgfl-MluI

**Cloning Scheme:**

Cloning sites used for ORF Shutting:



**Plasmid Map:**


<b>ACCN:</b>	NM_001290296
<b>ORF Size:</b>	3012 bp
<b>OTI Disclaimer:</b>	The molecular sequence of this clone aligns with the gene accession number as a point of reference only. However, individual transcript sequences of the same gene can differ through naturally occurring variations (e.g. polymorphisms), each with its own valid existence. This clone is substantially in agreement with the reference, but a complete review of all prevailing variants is recommended prior to use. <a href="#">More info</a>
<b>OTI Annotation:</b>	This clone was engineered to express the complete ORF with an expression tag. Expression varies depending on the nature of the gene.
<b>Components:</b>	The ORF clone is ion-exchange column purified and shipped in a 2D barcoded Matrix tube containing 10ug of transfection-ready, dried plasmid DNA (reconstitute with 100 ul of water).
<b>RefSeq:</b>	<a href="#">NM_001290296.1</a> , <a href="#">NP_001277225.1</a>
<b>RefSeq Size:</b>	6362 bp
<b>RefSeq ORF:</b>	3015 bp
<b>Locus ID:</b>	10580
<b>UniProt ID:</b>	<a href="#">Q9BX66</a>
<b>Cytogenetics:</b>	10q24.1
<b>Protein Families:</b>	Druggable Genome
<b>Protein Pathways:</b>	Adherens junction, Insulin signaling pathway, PPAR signaling pathway
<b>MW:</b>	112.2 kDa

**Gene Summary:**

This gene encodes a CBL-associated protein which functions in the signaling and stimulation of insulin. Mutations in this gene may be associated with human disorders of insulin resistance. Alternative splicing results in multiple transcript variants. [provided by RefSeq, Mar 2014]