

## Product datasheet for **RG239873**

### Eph receptor A5 (EPHA5) (NM\_001281767) Human Tagged ORF Clone

#### Product data:

Product Type:	Expression Plasmids
Product Name:	Eph receptor A5 (EPHA5) (NM_001281767) Human Tagged ORF Clone
Tag:	TurboGFP
Symbol:	EPHA5
Synonyms:	CEK7; EHK-1; EHK1; EK7; HEK7; TYRO4
Mammalian Cell Selection:	Neomycin
Vector:	pCMV6-AC-GFP (PS100010)
E. coli Selection:	Ampicillin (100 ug/mL)



[View online »](#)

ORF Nucleotide  
Sequence:

>RG239873 representing NM\_001281767.  
Blue=ORF Red=Cloning site Green=Tag(s)

```
GCTCGTTTAGTGAACCGTCAGAATTTTGTAAACGACTCACTATAGGGCGGCCGGGAATTCGTGACTG
GATCCGGTACCGAGGAGATCTGCCGCCCGCATCGCC
ATGCGGGGCTCGGGGCCCGGGGTGCGGGACGCCGGCCGCCCAAGCGGGCGGGCAGACCCCCATC
ACCCACGGCTCCCTGGCCGGCTACTCTGCACCTCGACGGGCTCCCTCTGGACGTGCCTTCTCTG
TGGCCCGCACTCCGGACCCTCTGGCCAGCCCCAGCAACGAAGTGAATTTATTGGATTACGCACTGTC
ATGGGGGACCTGGGATGGATTGCTTTTCCAAAAATGGGTGGGAAGAGATTGGTGAAGTGGATGAAAAT
TATGCCCTATCCACACATACCAAGTATGCAAAGTATGGAACAGAATCAGAATAACTGGCTTTTGACC
AGTTGGATCTCCAATGAAGGTGCTTCCAGAATCTTCATAGAACTCAAATTTACCTGCGGGACTGCAAC
AGCCTTCTGGAGGACTGGGACCTGTAAGGAAACCTTTAATATGTATTACTTTGAGTCAGATGATCAG
AATGGGAGAAACATCAAGGAAAACCAATACATCAAATTTGATACCATTGCTGCCGATGAAAGCTTTACA
GAACCTTGATCTTGGTGACCGTGTATGAAACTGAATACAGAGGTCAGAGATGTAGGACCTCTAAGCAAA
AAGGGATTTTATCTTGTCTTTCAAGATGTTGGTGCTTGCATTGCTCTGGTTTCTGTGCGTGTATACTAT
AAAAAATGCCCTTCTGTGGTACGACACTTGGCTGTCTTCCCTGACACCATCACTGGAGCTGATTCTTCC
CAATTGCTCGAAGTGTCAAGGCTCCTGTGTCAACCAATTCTGTGACCGATGAACCTCCCAAAATGCACTGC
AGCGCCGAAGGGGAGTGGCTGGTGCCCATCGGGAAATGCATGTGCAAGGCAGGATATGAAGAGAAAAAT
GGCACCTGTCAAGTGTGCAGACCTGGGTCTTCAAAGCCTCACCTCACATCCAGAGCTGCGGCAAAATGT
CCACCTCACAGTTATACCCATGAGGAAGCTTCAACCTCTTGTGTCTGTGAAAAGGATTATTTGAGGAGA
GAGTCTGATCCACCCACAATGGCATGCACAAGACCCCCCTCTGCTCCTCGGAATGCCATCTCAAATGTT
AATGAAACTAGTGTCTTCTGGAATGGATTCCGCTGCTGACACTGGTGGAAAGGAAAGACGTGTCATAT
TATATTGCATGCAAGAAGTGCAACTCCATGCAGGTGTGTGTGAGGAGTGTGGCGTCAATGTCAGGTAC
CTTCCCGGCAAAAGCGGCTGAAAAACACTCTGTGATGATGGTGGATCTACTCGCTCACACAAACTAT
ACCTTTGAGATTGAGGCAGTGAATGGAGTGTCCGACTTGAGCCAGGAGCCCGGAGTATGTGTCTGTA
AATGTAACCACAAATCAAGCAGCTCCATCTCCAGTCACCAATGTGAAAAAGGGAAAAATTGCAAAAAAC
AGCATCTCTTTGTCTTGGCAAGAACCAGATCGTCCCAATGGAATCATCCTAGAGTATGAAATCAAGTAT
TTTAAAAGGACCAAGAGACCAGCTACACGATTATCAAATCTAAAGAGACAATATTACTGCAGAGGGC
TTGAAACCAGCTTCAGTTTATGTCTTCAAATTCGAGCACGTACAGCAGCAGGCTATGGTGTCTTCAGT
CGAAGATTTGAGTTTAAAACACCCAGTGTGAGTGCAGCATCCAGCGATCAAAGCCAGATTCTGTGA
ATTGCTGTGTCTGTGACAGTGGGAGTCAATTTTGTGGCAGTGGTATCGGCGTCTCCTCAGTGGAAAT
TGCTGCGAATGTGGCTGTGGGAGGGCTTCTCCCTGTGCCTGTTGCCCATCAAAGCCTAATATGGCGG
TGTGGCTACAGCAAAGCAAAACAAGATCCAGAAGGAAAAAGATGCATTTTCATAATGGGCACATTTAAA
CTGCCAGGAGTAAGAACTTACATTGATCCACATACCTATGAGGATCCCAATCAAGCTGTCCACGAATTT
GCTAAGGAGATAGAAGCATCATGTATCACCATTGAGAGAGTTATTGGAGCAGGTGAATTTGGTGAAGTT
TGTAGTGGACGTTTGAAGTACCAGGAAAAAGAGAATTACCTGTGGCTATCAAACCCCTTAAAGTAGGC
TATACTGAAAAGCAACGCAGAGATTTCTAGGTGAAGCAAGTATCATGGGACAGTTTGTATCATCTAAC
ATCATCCATTTAGAAGGTGTGGTGACCAAAAGTAAACCAGTGTGATCGTGACAGAGTATATGGAGAAT
GGCTCTTTAGATACATTTTGAAGAAAAACGATGGGCAGTTCAGTGTGATTGAGTGTGGTGGTGGTGGT
AGAGGTATCTCTGCAGGAATGAAGTACCTTTCTGACATGGGCTATGTGCATAGAGATCTTGTGCCAGA
AACATCTTAATCAACAGTAACTTGTGTGCAAAGTGTCTGACTTTGGACTTTCCCGGACTTGGAAAGAT
GATCCCGAGGCAGCCTACACCACAAGGGGAGGAAAAATCCAATCAGATGGACTGCCCCAGAAGCAATA
GCTTTCCGAAAGTTTACTTCTGCCAGTGTCTGGAGTTATGGAATAGTAATGTGGGAAGTTGTGTCT
TATGGAGAGAGACCCTACTGGGAGATGACCAATCAAGATGTGATTAAGCGGTAGAGGAAGGCTATCGT
CTGCCAAGCCCCATGGATTGCTCTGCTCTCTATCAGTTAATGCTGGATTGCTGGCAGAAAGAGCGA
AATAGCAGGCCCAAGTTTGTGAAATAGTCAACATGTTGGACAAGCTGATACGTAACCCAAGTAGTCTG
AAGACGCTGGTTAATGCATCCTGCAGAGTATCTAATTTATTGGCAGAACATAGCCCACTAGGATCTGGG
GCCTACAGATCAGTAGGTGAATGGCTAGAGGCAATCAAGATGGGCGGTATACAGAGATTTTCATGGAA
AATGGATACAGTTCAATGGACGCTGTGGCTCAGGTGACCTTGGAG
ACGCGTACGCGGCCGCTCGAG - GFP Tag - GTTTAAAC
```

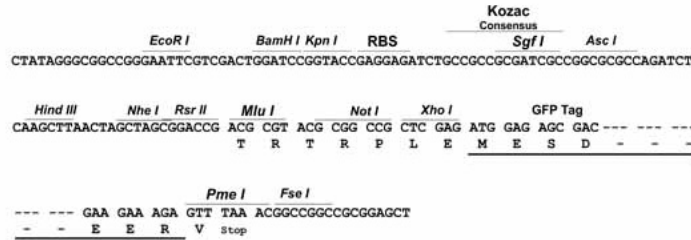
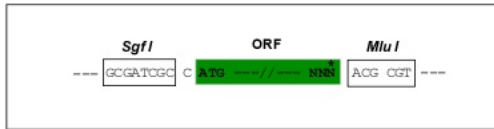
Protein Sequence: >Peptide sequence encoded by RG239873  
 Blue=ORF Red=Cloning site Green=Tag(s)

MRGSGPRGAGRRRPPSGGGDTPITPASLAGCYSAPRRAPLWTCLLLCAALRTLLASPSNEVNLLDSRTV  
 MGDLGWIAFPKNGWEEIGEVDENYAPIHTYQVCKVMEQNQNNWLLTSWISNEGASRI FIELKFTLRDCN  
 SLPGGLGTCKETFNMYFESDDQNGRNIKENQYIKIDTIAADESFTELDLGDVRMKNLNTVVRDVGPLSK  
 KGFYLAFDQVACIALVSVRVYYKCPSSVVRHLAVFPDITGADSSQLLEVSGSCVNHSTVDEPPKMHC  
 SAEGEWLVPIGKCMCKAGYEEKNGTCQVCRPGFFKASPHIQSCGKCPPHSYTHEEASTSCVCEKDYFRR  
 ESDPPTMACTRPPSAPRNAISNVNETSVFLEWIPPADTGGRKDVSYYIACKKCNHSHAGVCEECCGGHVRY  
 LPRQSGLKNTSVMVDLLAHTNYTFEIEAVNGVSDLSPGARQYVSVNVTNQAAPSPVTNVYKGGIAKN  
 SISLSWQEPDRPNGIILEYEIKYFEKDQETSYYIIKSKETTITAEGLKPASVYVFQIRARTAAGYGVFS  
 RRFEFETTPVSAASSDQSQIPVIAVSVTVGVILLAVVIGVLLSGSCCECGGRASSLCAVAHPSLIWR  
 CGYSKAKQDPEEEKMHFHNGHIKLPVVRTYIDPHTYEDPNQAVHEFAKEIEASCITIERVIGAGEFGEV  
 CSGRLKLPKRELPAIAIKTLKVGYTEKQRRDFLGEASIMGQFDHPNIIHLEGVVTKSKPVMIVTEYMN  
 GSLDTFLKKNQDQFTVIQLVGLRGI SAGMKYLSDMGYVHRDLAARNILINSNLVCKVSDFGLSRVLED  
 DPEAAYTRGGKIPIRWTAPEAIAFRKFTSASDVMSYGI VMWEVVSYGERFPYWEMTNQDVIKAVEEGYR  
 LPSPMDCPAALYQLMLDCWQKERNRPFDEIVNMLDKLIRNPSSLKTLVNASCVRSNLLAEHSPGLGG  
 AYRSVGEWLEAIKMGRYTEIFMENGYSMDAVAQVTL E  
 TRTRPLEMESDESGLPAMEIECRITGTLNGVEFELVGGEGTPEQGRMTNKMSTKGALTFSPYLLSHV  
 MGYGFYHFGTYPSTYENPFLHAINNGGYNTRIEKYEDGGVLHVSFSYRYEAGRVIGDFKVMGTGFPED  
 SVIFTDKIIRSNATVEHLHPMGDNDLDGSFTRTFSLRDGGYSSVVDSHMHFKSAIHP SILQNGGPMFA  
 FRRVEEDHSNTELGIVEYQHAFKTPDADAGEERV

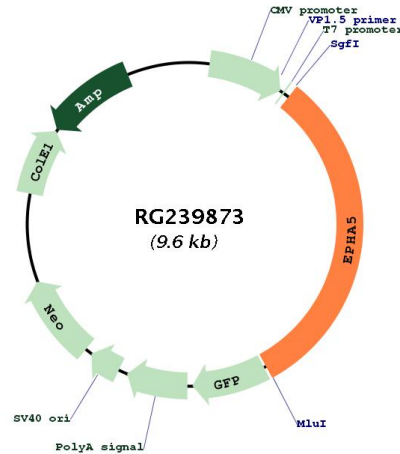
Restriction Sites: SgfI-MluI

Cloning Scheme:

Cloning sites used for ORF Shutting:



Plasmid Map:



<b>ACCN:</b>	NM_001281767
<b>ORF Size:</b>	3012 bp
<b>OTI Disclaimer:</b>	The molecular sequence of this clone aligns with the gene accession number as a point of reference only. However, individual transcript sequences of the same gene can differ through naturally occurring variations (e.g. polymorphisms), each with its own valid existence. This clone is substantially in agreement with the reference, but a complete review of all prevailing variants is recommended prior to use. <a href="#">More info</a>
<b>OTI Annotation:</b>	This clone was engineered to express the complete ORF with an expression tag. Expression varies depending on the nature of the gene.
<b>Components:</b>	The ORF clone is ion-exchange column purified and shipped in a 2D barcoded Matrix tube containing 10ug of transfection-ready, dried plasmid DNA (reconstitute with 100 ul of water).
<b>RefSeq:</b>	<a href="#">NM_001281767.3</a>
<b>RefSeq Size:</b>	5179 bp
<b>RefSeq ORF:</b>	3015 bp
<b>Locus ID:</b>	2044
<b>Cytogenetics:</b>	4q13.1-q13.2
<b>Protein Families:</b>	Druggable Genome, Protein Kinase, Transmembrane
<b>Protein Pathways:</b>	Axon guidance
<b>MW:</b>	111.5 kDa

**Gene Summary:**

This gene belongs to the ephrin receptor subfamily of the protein-tyrosine kinase family. EPH and EPH-related receptors have been implicated in mediating developmental events, particularly in the nervous system. Receptors in the EPH subfamily typically have a single kinase domain and an extracellular region containing a Cys-rich domain and 2 fibronectin type III repeats. The ephrin receptors are divided into 2 groups based on the similarity of their extracellular domain sequences and their affinities for binding ephrin-A and ephrin-B ligands. Alternatively spliced transcript variants encoding different isoforms have been described. [provided by RefSeq, Aug 2013]