

## Product datasheet for **RG239872**

### USP38 (NM\_001290325) Human Tagged ORF Clone

#### Product data:

Product Type:	Expression Plasmids
Product Name:	USP38 (NM_001290325) Human Tagged ORF Clone
Tag:	TurboGFP
Symbol:	USP38
Synonyms:	HP43.8KD
Mammalian Cell Selection:	Neomycin
Vector:	pCMV6-AC-GFP (PS100010)
E. coli Selection:	Ampicillin (100 ug/mL)



[View online »](#)

**ORF Nucleotide Sequence:**

>RG239872 representing NM\_001290325.  
 Blue=ORF Red=Cloning site Green=Tag(s)

```

GCTCGTTTAGTGAACCGTCAGAATTTTGTAAACGACTCACTATAGGGCGGCCGGGAATTCGTGACTG
GATCCGGTACCGAGGAGATCTGCCGCCACGATCGCC
ATGGACAAGATCCTGGAGGGCCTGTGAGTTCCTCGCATCCCCTGCCCTCAAGCGGGTGATTGTGCGG
AAGGTGGTGAATCGGCGGAGCACTGGCTAGACGAGGCGCAGTGGGACCCAGGTGCTGGAGGCCATGTTT
GACCTGACGACC
CGGCTCATCCTGGAGGGCCAGGACCTTTCCAGCGGCAGGTGGGACCCAGGTGCTGGAGGCCACGCA
CGATACCACCGGCCAGAGTTCGAGTCTCTTCAACAAGACCTTCGTGTTGGGCCTCCTTCATCAGGGC
TACCACCTCTGGACAGGAAGGATGTAGCCATCCTGGACTACATTCACAACGGCCTGAAGCTGATTATG
AGCTGTCCGTCGGTGTGGATCTCTTAGCCTCCTGCAGGTAGAGGTGTTACGGATGGTGTGTGAGAGG
CCGGAGCCGACGCTCTGTGCCGACTGAGCGACCTTCTGACCGACTTTGTCAATGCATCCCAAGGGG
AAATTGTCATCACGTTCTGTCAACAGCTGGTTCGAACGATAGGCCATTTCCAGTGGTGTCCACCCAG
GAAAGAGAGCTGCGGGAATATGTCTCCAGGTGACAAAAGTGAGTAACTTGTGCAGAACATCTGGAAG
GCCGAGCCTGCCACACTACTGCCTTCCCTGCAAGAAGTTTTTGAAGCATCTTCCACAGATGCATCA
TTTGAACCTTCTGTAGCATTGGCAAGCCTTGTGCAGCATATTCTCTTCAGATGATTACAGTTCTCATC
AGGAGCCTTACTACGGATCCAAATGTAAAAGATGCAAGTATGACCCAAGCCCTTTCAGAAATGATTGAC
TGGCTATCCTGGCCATTGGCTCAGCATGTGGATACATGGGTAATTGCACTCCTGAAAGGACTGGCAGCT
GTCCAGAAGTTTACTATTTTGTAGATGTTACTTTGCTGAAAAAGAACTGGTTTTTAAATCGACTTTGG
TTTCTCTTGTGAGACCTGGTGTCTTGCAGTCTTTCTCACATGCTGCTTAGCTTTAGCATTCTCCA
GAGGCGTTCCATTTGATTGTTCCCTCATGTGGTTAATTTGGTTCATTCTTTCAAAAATGATGGTCTGCCT
TCAAGTACAGCCTTCTTAGTACAATTAACAGAATTGATACACTGTATGATGTATCATTATCTGGATTT
CCAGATCTATGAACCTATTCTGGAGCAATAAAGGATTTTCCCTAAGCCAGTGAAGAGAAGATTAAG
TTAATTCTCAATCAAAGTGCCTGGACTTCTCAATCCAATTTCTTTGGCGTCTTGGTGTCTAGACTTCT
GGAAAACTGAAACTGGGAAAACTGGTCTTATTAACCTAGGAAATACATGTTATATGAACAGTGTATA
CAAGCCTGTTTTATGGCCACAGATTTCCAGGAGACAAGTATTATCTTTAAATCTAAATGGGTGCAATTCA
TTAATGAAAAAATTACAGCATCTTTTTGCCTTTCTGGCCATACACAGAGGGAAGCATACGCACCTCGG
ATATTCTTTGAGGCTCCAGACCTCCATGGTTTACTCCCAGATCACAGCAAGACTGTTCTGAATACCTC
AGATTTCTCCTTGACAGGCTCCATGAAGAAGAAAAGATCTTGAAAGTTCAGGCCTCACACAAGCCTTCT
GAAATTCTGGAATGCAGTGAACCTCTTACAGGAAGTAGCTAGTAAAGCAGCAGTACTAACAGAGACC
CCTCGTACAAGTGACGGTGAAGACTTTAATAGAAAAAATGTTTGGAGGAAAACACGAACTCACATA
CGTTGTTTGAACAGGAGTACCTCACAAAAAGTGAAGCCCTTACAGATCTTTTCGCTTGCCTTTTGT
CCTTCTCTTCTTTGAAAAACATGTCTGTCCAAGATCCAGCATCATCACCCAGTATACAAGATGGTGGT
CTAATGCAAGCCTCTGTACCCGGTCTTTCAGAAGAACCAGTAGTTTATAATCCAACAACAGCTGCCTTC
ATCTGTGACTCACTTGTGAATGAAAAAACCATAGGCAGTCCCTCTAATGAGTTTTACTGTTCTGAAAAC
ACTTCTGTCCCTAACGAATCTAACAAGATTCTTGTAAATAAAGATGTACCTCAGAAACCAGGAGGTGAA
ACCACACCTTCAGTAACTGACTTACTAAATTTTTTTGGCTCCAGAGATTCTTACTGGTGATAACCAA
TATTATTGTGAAAACTGTGCCTCTCTGCAAAATGCTGAGAAAACATGCAAAATCACGGAGGAACCTGAA
TACCTTATTCTTACTCTCTGAGATTTTCATATGATCAGAAGTATCATGTGAGAAGGAAAAATTTAGAC
AATGTATCACTGCCACTGGTTTTGGAGTTGCCAGTTAAAAGAATTACTTCTTTCTTTCATTGTCCAGAA
AGTTGGTCTGTAGATGTTGACTTCACTGATCTTAGTGAGAACCTTGTCTAAAAAATTAAGCCTTCAGGG
ACTGATGAAGCTTCTGCACAAAATGGTGCCCTATCTATTAAGTTCCGTTGTGGTTCACTCTGGTATA
TCCTCTGAAAGTGGGCATTACTATTCTTATGCCAGGAATATCACAAGTACAGACTCTTCATATCAGATG
TACCACAGTCTGAGGCTCTGGCATTAGCATCCTCCAGAGTCATTTACTAGGGAGAGATAGTCCAGT
GCAGTTTTTGAACAGGATTTGGAAAATAAGGAAATGTCAAAGAATGGTTTTTATTTAATGACAGTAGA
GTGACATTTACTTCAATTCAGTCAGTCCAGAAAATACGAGCAGGTTTCCAAAGGACACAGCTTATGTG
CTTTTGTATAAAAAACAGCATAGTACTAATGGTTAAGTGGTAATAACCCAACCAGTGGACTCTGGATA
AATGGAGACCCACCTCTACAGAAAGAATATGGATGCTATAACAAAAGACAATAAACTATATTTACAG
GTAAGTTGAAAATACAAGCTTTATTTGGTAAAAATATTAACAAT
ACGCGTACGCGGCCGCTCGAG - GFP Tag - GTTTAAAC
  
```

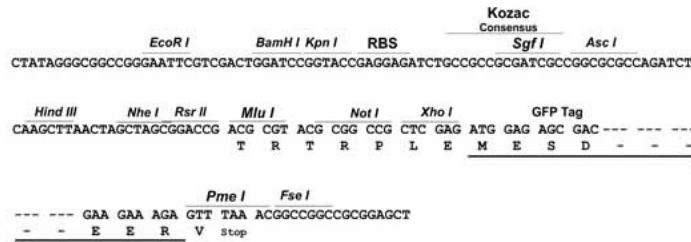
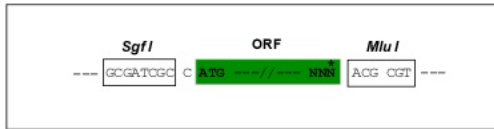
**Protein Sequence:** >Peptide sequence encoded by RG239872  
 Blue=ORF Red=Cloning site Green=Tag(s)

MDKILEGLVSSSHPLPLKRVIVRKVVESAEHWLDEAQCEAMFDL TTRLILEGQDPFQRQVGHQVLEAYA  
 RYHRPEFESFFNKTFVLGLLHQGYHSLDRKDVAILDYIHNGLKLIMSCPSVLDLFSLLQVEVLRMVCER  
 PEPQLCARLSDLLDFVQCIPKGLSITFCQQLVRTIGHFQCVSTQERELREYVSQVTKVSNLLQNIWK  
 AEPATLLPSLQEVFASISSTDAFEPVALASLVQHIPLQMITVLIRSLTDPNVKDASMTQALCRMID  
 WLSWPLAQHVDTWVIALKGLAAVQKFTLIDVTLKIELVFNRLWFPLVRPGALAVLSHMLLSFQHS  
 EAFHLIVPHVVNLVHSFKNDGLPSSTAFLVQLTELICHMMYHSGFPDLYEPILEAIKDFPKPSEEKIK  
 LILNQSASWTSQSNLASCLSRSGKSETGKTGLINLGNTCYMNSVIQALFMATDFRRQVLSLNLGCNS  
 LMKKLQHLFAFLAHTQREAYAPRIFFEASRPPWFTPRSQQDCSEYLRFLDRLHEEEKILKVQASHKPS  
 EILECSETSLQEVASKAAVL TETPRTSDGEKTLIEKMFGGKLRTHIRCLNCRSTSQKVEAFDLSLAF  
 PSSLENMSVQDPASSPSIQDGLMQASVPGPSEEPVVYNPTAAFCDSL VNEKTI GSPNEFYCSEN  
 TSVPNESNKILVNKDVQKPGGETTPSVTDLLNYFLAPEIL TGDNQYYCENCASLQNAEKT MQITEEPE  
 YLIL TLLRF SYDQKYHVRKILDNVSLPLVLELPVKRITSFSSLESWSVDVDFDLSENLAKKLP  
 TDEASCTKLVPYLLSSVVHSGISSESGHYYSARNITSDSSYQMYHQSEALALASSQSHLLGRD  
 SPSS AVFEQDLENKEMSKEWLFNDSRVFTFSFQSVQKITSRFPKDTAYVLLYKKQHSNGLSGNNPTSGL  
 WINGDPPLQKELMDAITKDNKLYLVQVSWKYKLYLLKILNN  
 TRTRPLEMESDESGLPAMEIECRITGTLNGVEFELVGGEGTPEQGRMTNKMSTKGALTFSPYLLSHV  
 MGYGFYHFGTYPSTYENPFLHAINNGGYNTRIEKYEDGGVLHVSFSYRYEAGRVIGDFKVMGTGFPED  
 SVIFTDKIIRSNATVEHLHPMGDNDLDGSFTRTFLRDGGYSSVVDSHMHFKSAIHPSILQNGGPMFA  
 FRRVEEDHSNTELGIVEYQHAFKTPDADAGEERV

**Restriction Sites:** SgfI-MluI

**Cloning Scheme:**

Cloning sites used for ORF Shutting:

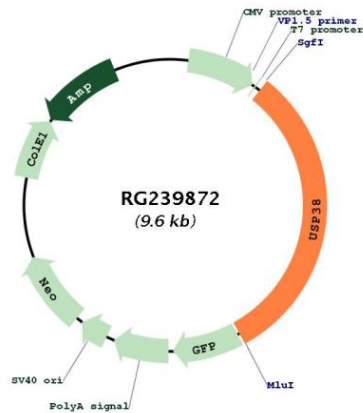


**ACCN:** NM\_001290325

**ORF Size:** 3012 bp

<b>OTI Disclaimer:</b>	The molecular sequence of this clone aligns with the gene accession number as a point of reference only. However, individual transcript sequences of the same gene can differ through naturally occurring variations (e.g. polymorphisms), each with its own valid existence. This clone is substantially in agreement with the reference, but a complete review of all prevailing variants is recommended prior to use. <a href="#">More info</a>
<b>OTI Annotation:</b>	This clone was engineered to express the complete ORF with an expression tag. Expression varies depending on the nature of the gene.
<b>Components:</b>	The ORF clone is ion-exchange column purified and shipped in a 2D barcoded Matrix tube containing 10ug of transfection-ready, dried plasmid DNA (reconstitute with 100 ul of water).
<b>RefSeq:</b>	<a href="#">NM_001290325.1</a> , <a href="#">NP_001277254.1</a>
<b>RefSeq Size:</b>	4123 bp
<b>RefSeq ORF:</b>	3015 bp
<b>Locus ID:</b>	84640
<b>UniProt ID:</b>	<a href="#">Q8NB14</a>
<b>Cytogenetics:</b>	4q31.21
<b>Protein Families:</b>	Druggable Genome, Protease
<b>MW:</b>	113.6 kDa
<b>Gene Summary:</b>	Deubiquitinating enzyme exhibiting a preference towards 'Lys-63'-linked ubiquitin chains. [UniProtKB/Swiss-Prot Function]

**Product images:**



Circular map for RG239872