

Product datasheet for **RG239870**

TMEM16B (ANO2) (NM_001278596) Human Tagged ORF Clone

Product data:

Product Type:	Expression Plasmids
Product Name:	TMEM16B (ANO2) (NM_001278596) Human Tagged ORF Clone
Tag:	TurboGFP
Symbol:	ANO2
Synonyms:	C12orf3; TMEM16B
Mammalian Cell Selection:	Neomycin
Vector:	pCMV6-AC-GFP (PS100010)
E. coli Selection:	Ampicillin (100 ug/mL)



[View online »](#)

ORF Nucleotide Sequence:

>RG239870 representing NM_001278596.
 Blue=ORF Red=Cloning site Green=Tag(s)

```

GCTCGTTTAGTGAACCGTCAGAATTTTGTAAACGACTCACTATAGGGCGGCCGGGAATTCGTGACTG
GATCCGGTACCGAGGAGATCTGCCGCCCGCATCGCC
ATGGCGACTCCCGGGCCGCGGATATACCCCTGCTCCCTGGCTCCCCACGCCGGCTGAGCCCTCAGGCA
GGGTCCAGAGGGGCCAGGGCCCAAACATGGACAGCAGTGTCTCAAGATGCCAGGTCCCGGGCCCCA
GGTCTGCAGGGCGGTCCAACAGAGATCCTGGCCAGCCCTGCGGTGGAGAGAGCACCCGACGAGCTCT
GTCATCAACAACATCTGGATGCCAATGAGCCTGTGTCCTTGGAGGCCCGTCTTAGCCGCATGCACTTC
CATGACAGTCAGAGGAAGGTCGACTATGTACTTGCCTACCACTACCGAAACCGGGGTGCACTGGCC
CAAGGCTTCCCTGGCCACTCGCTGGCTATCGTCTCCAATGGGGAGACAGGCAAGGAGCCTCATGCTGGG
GGCCAGGTGACATTGAGCTGGGACCGCTCGATGCCCTGGAGGAGGAGGAAGGAGCAGCGGGAGGAA
TTTGAGCACAATCTGATGGAGGCTGGACTGGAGCTTGAGAAGGACTTGAGAATAAAAGCCAGGGATCC
ATCTTTGTCGGATACACGCCCCGTGCCAGGTGCTGGCCAGAGAGGCAGAATTCTTGAAGATCAAAGTT
CCTACCAAGAAAGAGATGTACGAGATCAAAGCAGGAGGCAGCATTGCAAAGAAGTTCAGCGCGGCTCTG
CAGAAGCTGAGCTGCACCTGCAGCCCCGAGTTCAGAACACAGCAACAACAAGTGAAAAACCTCTCC
TACCCATTCTCCAGGGAGAAGATGTACCTGTACAACATCCAGGAAAAGGACACCTTCTTTGATAATGCC
ACCCGACGCCGATTGTGCACGAGATCCTGAAGCGCACAGCCTGCTCCCGAGCCAACAACACGATGGGT
ATTAACCTCTGATCGCAAACAATATCTATGAGGCTGCCTACCCTCTTATGACGGTGAATACGATAGT
CCAGAGGACGATATGAATGACAGGAAGCTGCTATATCAAGAAATGGGCGCGCTATGGAGTGTCTATAAG
TTCCAACCTATTGACCTCATCAGAAAGTATTTGGAGAAAAAATGGACTGTATTTTGCCTGGCTGGGA
TTATATACATCATTCTCATCCCATCTTCTGTAATTGGAGTGATTGTGTTTCTTTATGGATGTGCAACA
ATTGAAGAAGATATCCAGCAGAGAGATGTGTACCAGCAGAATGCCTTACCATGTGTCCCCTGTGT
GACAAAGTCTGTGATTACTGGAACCTCAGCTCAGCCTGTGGGACCGCGCAGGCCAGCCACCTGTTTGAC
AACCTGCCACCGTCTTCTTCTCTATCTTCATGGCTCTGTGGGCTACCATGTTCTTGAAAACTGGAAG
AGGCTACAGATGCGACTGGGCTACTTTTGGGACCTGACTGGCATAGAAGAGGAAGAAGACGTGCCAG
GAACATCCAGGCCTGAGTATGAAACCAAAGTTCGAGAGAAAAATGCTAAAGGAGAGCAACCAGTCTGCT
GTCCAGAAATGGAAACAAACACGACGGAGTGTGGCGATGAGGATGATGAAGATAAACTGACCTGGAAG
GATCGTTTCCAGGTTACCTGATGAACTTTGCCTCCATCTTATTCATGATTGCCCTGACATTCTCAATC
GTCTTTGGGTGATAGTGTATCGAATAACAACGACGCCGCTCTGTCTCAATAAAGCTACACGCTCC
AATGTCCGGGTGACAGTGACAGCAACAGCAGTCATCATCAACCTCGTGGTCATCCTCATCTGGACGAG
ATCTACGGCGCTGTGGCCAAGTGGCTCACCAAAATGAGGTTCCGAAAACAGAACAGACTTTTGAAGAG
CGCCTGATCCTCAAAGCTTTCTTGTCAAGTTTGTCAATGCCTACTCCCCATCTTCTATGTGGCCTTT
TTCAAAGGGAGGTTTGTGGGCGAGCCTGGAAGCTACGTCTATGTATTGATGGTTACCGCATGGAAGAG
TGTGCTCCAGGGGCTGTCTCATGGAGCTTGCATTACGCTCAGCATCATCATGTTGGGGAAGCAGTTG
ATCCAGAAACAACATCTTTGAGATTGGAGTCCCGAAGCTAAAGAAACTATTTGAAAGCTGAAAGATGAG
ACCGAAGCTGGAGAACTGACTTGCCCATTCGAAACATCCAGAGCAGTGGGACCTAGACTACAGCTTG
GAACCATACACAGGACTGACTCCGGAGTACATGGAAATGATCATCCAGTTTGGTTTTGTCAACCCTTTC
GTGGCCTCCTTTCCCTGGCACCTGTGTTTGGCCTCCTCAACAACGTCATTGAAGTGCGGCTCGATGCA
AAGAAGTTTGTACAGAGCTGAGACGGCCGGATGCTGTAAAGAACCAAGATATCGGAATCTGGTTTGAC
ATTCTCTCTGGAATTGGCAAGTCTCTGTTATCAGCAACGCTTTTGTATTGCGATCACCTCCGACTTT
ATCCCCGCTGGTGTACCAGTACTCTACAGTCACAATGGGACTCTGCACGGCTTTGTCAACCACACC
CTCTCCTTTTTCAACGTAGCCAGCTGAAGGAGGGGACGCAGCCAGAAAACCTCACAGTTTGACCAGGAG
GTTGAGTTCTGCAGGTTTAAAGATTACCAGAGCCGCATGGGCCCGAACCCCTTATGAGTTTTCGAAA
CAGTACTGGTTTATTCTGTCCGCCGTCTGGCTTTTGTCAATCTTCCAGAACCTCGTATGTTCTCTG
AGCGTCTCGTGGACTGGATGATCCAGACATCCCACGGACATCAGCGACCAGATCAAGAAAGAGAAG
AGCTTATTAGTGGATTTCTTCTGAAAGAGGAGCATGAGAAGCTCAAGCTGATGGATGAGCCGGCTCTG
AGGAGCCAGGAGGTGGGATCGAAGCAGGAGCCGGGCAGCCAGCTCAGCACCTTCAAGCCAAAGCCAG
CTGGGCAGCATGATGTCGTGAGGCTCTCAGCACCAATGTG
ACGCGTACGCGGCCGCTCGAG - GFP Tag - GTTTAAAC
  
```

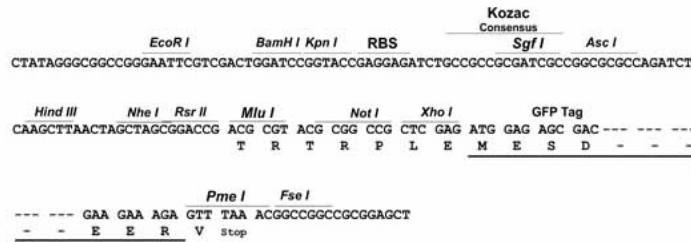
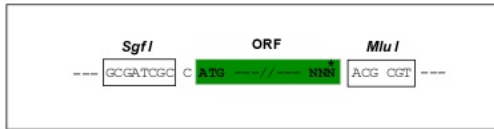
Protein Sequence: >Peptide sequence encoded by RG239870
 Blue=ORF Red=Cloning site Green=Tag(s)

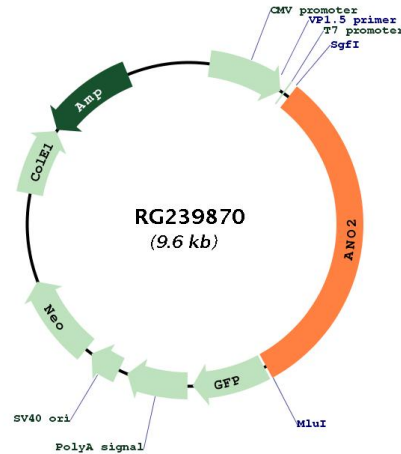
MATPGPRDIPLLPSPRRLSPQAGSRGGQGPKHGQQCLKMPGPRAPGLQGGSNRDPGQPCGGESTRSS
 VINNYLDANEPVLEEARLSRMHFHDSQRKVDYVLAYHYRKRGVHLAQGFPGHSLAIVSNGETGKEPHAG
 GPGDIELGPLDALEERKEQREEFHNLMAGLELEKDLNKSQGSIFVRIHAPWQVLAAREAEFLKIKV
 PTKKEMEYIKAGGSIKKFSAALQKLSHLQPRVPEHSNNMKMNL SYPF SREKMYL YNIQEKDTFFDNA
 TRSRIVHEILKRTACSRANNTMGINSLIANNIYEAAYPLHDGEYD SPEDDMNRKLLYQEWARYGVFYK
 FQPIDLIRKYFGEKIGLYFAWLGLYTSFLIPSSVIGVIVFLYGCATIEEDIPSREMCDQQNAFTMCLC
 DKSCDYWNLSACGTAQASHLFDNPATVFFSIFMALWATMFLENWKRQLQRLGYFWDLTGIEEEEEERAQ
 EHSRPEYETKVREKMLKESNQSAVQKLETNTECGDEDEDKLTWKDRFPGYLMNFASILFMIALTF SI
 VFGVIVYRITTAALSLNKATR SNVRVTATAVIINLVVILILDEIYGAVAKWLT KIEVPKTEQTFEE
 RLILKAFLLKFVNAYSPIFYVAFFKGRFVGRPGSYVYVFDGYRMEECAPGGCLMELCIQLSIIMLGKQL
 IQNNIFEIGVPKLLKFRKLDKDETEAGETDSAHSKHPEQWDL DYSLEPYTGLTPEYMEMI IQFGVTLF
 VASFPLAPV FALLNNVIEVRLDAKKFVTELRRPDVARTKDIGIWF DILSGIGKFSVISNAFVIAIT SDF
 IPRLVYQYSYSHNGTLHG FVNHTLSFFFNYSQLKEGTQ PENSQFDQEVQFCRFKDYREPPWAPNPEYFSK
 QYWFILSARLAFV IIFQNLVMFLSVLVDWMI PDIPTDISDQIKKEKSLLVDFFLKEEHEKLLMDEPAL
 RSPGGDRSRRAASSAPSGQSQLGSMSSGSQHTNV
 TRTRPLEMESDESGLPAMEIECRITGTLNGVEFELVGGGEGTPEQGRMTNKMSTKGALTFSPYLLSHV
 MGYGFYHFGTYP SGYENPFLHAINNGGYNTRIEKYEDGGVLHVSFSYRYEAGRVIGDFKVMGTGFPED
 SVIFTDKIIRSNATVEHLHPMGDNDLDGSFTRTFSLRDGGYSSVVD SHMHFKSAIHPSILQNGGPMFA
 FRRVEEDHSNTELGIVEYQHAFKTPDADAGEERV

Restriction Sites: SgfI-MluI

Cloning Scheme:

Cloning sites used for ORF Shutting:



Plasmid Map:


ACCN: NM_001278596

ORF Size: 3009 bp

OTI Disclaimer: Due to the inherent nature of this plasmid, standard methods to replicate additional amounts of DNA in *E. coli* are highly likely to result in mutations and/or rearrangements. Therefore, OriGene does not guarantee the capability to replicate this plasmid DNA. Additional amounts of DNA can be purchased from OriGene with batch-specific, full-sequence verification at a reduced cost. Please contact our customer care team at custsupport@origene.com or by calling 301.340.3188 option 3 for pricing and delivery.

The molecular sequence of this clone aligns with the gene accession number as a point of reference only. However, individual transcript sequences of the same gene can differ through naturally occurring variations (e.g. polymorphisms), each with its own valid existence. This clone is substantially in agreement with the reference, but a complete review of all prevailing variants is recommended prior to use. [More info](#)

OTI Annotation: This clone was engineered to express the complete ORF with an expression tag. Expression varies depending on the nature of the gene.

Components: The ORF clone is ion-exchange column purified and shipped in a 2D barcoded Matrix tube containing 10ug of transfection-ready, dried plasmid DNA (reconstitute with 100 ul of water).

RefSeq: [NM_001278596.3](#)

RefSeq Size: 3711 bp

RefSeq ORF: 3012 bp

Locus ID: 57101

UniProt ID: [Q9NQ90](#)

Cytogenetics: 12p13.31

Protein Families: Transmembrane

MW: 114.4 kDa

Gene Summary: ANO2 belongs to a family of calcium-activated chloride channels (CaCCs) (reviewed by Hartzell et al., 2009 [PubMed 19015192]).[supplied by OMIM, Jan 2011]