

## Product datasheet for **RG239869**

### USP7 (NM\_001286458) Human Tagged ORF Clone

#### Product data:

Product Type:	Expression Plasmids
Product Name:	USP7 (NM_001286458) Human Tagged ORF Clone
Tag:	TurboGFP
Symbol:	USP7
Synonyms:	HAFOUS; HAUSP; TEF1
Mammalian Cell Selection:	Neomycin
Vector:	pCMV6-AC-GFP (PS100010)
E. coli Selection:	Ampicillin (100 ug/mL)



[View online »](#)

**ORF Nucleotide Sequence:**

>RG239869 representing NM\_001286458.  
 Blue=ORF Red=Cloning site Green=Tag(s)

```

GCTCGTTAGTGAACCGTCAGAATTTTGTAAACGACTCACTATAGGGCGGCCGGGAATTCGTGCGACTG
GATCCGGTACCGAGGAGATCTGCCGCCCGGATCGCC
ATGGTGATGCCACGCTTTTATCCAGACAGACCACACCAAAAAAGCGTAGGATTCTTCTCCAGTGCAAT
GCTGAATCTGATCCACGTCATGGTCTTGCCATGCACAAGCAGTGTGAAGATAATAAATTACAGAGAT
GATGAAAAGTCGTTTCAGTCGTCGTATTAGTCATTTGTTCTTCCATAAAGAAAATGATTGGGGATTTTCC
AATTTTATGCGCTGGAGTGAAGTGACCGATCCTGAGAAAGGATTTATAGATGATGACAAAAGTTACCTTT
GAAGTCTTTGTACAGGCGGATGCTCCCATGGAGTTGCGTGGGATTCAAAGAAGCACACAGGCTACGTC
GGCTTAAAGAATCAGGGAGCGACTTGTTACATGAACAGCCTGCTACAGACGTTATTTTTCACGAATCAG
CTACGAAAGGCTGTGTACATGATGCCAACCGAGGGGGATGATTGCTCTAAAAGCGTCCCTTTAGCATT
CAAAGAGTGTCTATGAATTACAGCATAGTGATAAACCTGTAGGAACAAAAAGTTAACAAAGTCATTT
GGGTGGGAACTTTAGTAGCTTACGCAACATGATGTTCCAGGAGCTTTGTGAGTGTGCTCGATAAT
GTGAAAATAAGATGAAAGGCACCTGTGTAGAGGGCACCATACCCAAATTATTCCGCGGCAAAATGGTG
TCCTATATCCAGTGTAAGAAAGTAGACTATCGGTCTGATAGAAGAGAAGATTATTATGATATCCAGCTA
AGTATCAAAGGAAAGAAAAATATATTTGAATCATTGTGGATTATGTGGCAGTAGAACAGCTCGATGGG
GACAATAAATACGACGCTGGGGAACATGGCTTACAGGAAGCAGAGAAAGGTGTGAAATTCCTAACATTG
CCACCAGTGTTACATCTACAACCTGATGAGATTTATGATGACCCTCAGACGGACCAAAATATCAAGATC
AATGATAGGTTTGAAATCCAGAGCAGTTACCCTTGTGAAATTTTGCAAAAACAGATCCTAAGGAC
CCTGCAAAATATATTCTCATGCAGTCTGGTTCATAGTGAGATAATCATGGTGACATTTATGTGGTT
TATCTAAACCCCAAGGGGATGGCAAATGGTGTAAATTTGATGACGACGTGGTGTCAAGGTGACTAAA
GAGGAAGCAATTGAGACAATTATGGGGTCCAGATGACGACCTGTCTGTTCCAGACTGCACTAATGCT
TACATGTTAGTCTACATCAGGGAATCAAACTGAGTGAAGTTTTACAGGGGTCACCGACCATGATATT
CCTCAGCAGTTGGTGGAGCGATTACAAGAAGAGAAAAGGATCGAGGCTCAGAAGCGGAAGGAGCGGCAG
GAAGCCCATCTCTATATGCAAGTGCAGATAGTCGAGAGGACAGTTTTGTGGCCACCAAGGGAATGAC
ATGTACGATGAAGAAAAAGTGAATACACTGTGTTCAAAGTATTGAAGAACTCCTCGCTTGTGAGTTT
GTTCAGAGCCTCTCAGACCATGGGATTTCCACAAGTCAAATTCGATTGTGGCCCATGCAAGCAAGG
AGTAATGGAACAAAACGACCAGCAATGTTAGATAATGAAGCCGACGGCAATAAAACAATGATTGAGCTC
AGTGATAATGAAAACCTTGGACAATATCCTGGAAACAGTTGATCCCGAGCTGGCTGCTAGTGGAGCG
ACCTTACCAAGTTTGATAAAGATCATGATGTAATGTTATTTTGAAGATGTATGATCCCAAAACCGGG
AGCTTGAATTACTGTGGCATATCTACACCAATATCCTGTAATAACGTGACTTGTCTCCAGTTATG
TGTGACAGAGCAGGATTTATTCAAGATACTAGCCTTATCCTCTATGAGGAAGTTAAACCGAATTTACA
GAGAGAATTCAGGACTATGACGTGTCTCTTGATAAAGCCCTTGATGAACTAATGGATGGTGACATCATA
GTATTTGAGAAGGATGACCCTGAAAATGATAACAGTGAATTACCCACCGCAAAGGAGTATTTCCGAGAT
CTCTACCACCGCTTGTGTCATTTTCTGTGATAAAAACAATCCCTAATGATCCTGGATTTGTGGTTACG
TTATCAAATAGAATGAATATTTTTCAGGTTGCAAAGACAGTTGCACAGAGGCTCAACACAGATCCAATG
TGTACTTTAAGAGATCTTCTACAGTCTTCAAGCCTAGACAACCTAAGAACTTTACTATCAGCAGCTT
AAGATGAAAATCACAGACTTTGAGAACAGGCGAAGTTTTAAATGTATATGGTTAAACAGCAATTTAGG
GAAGAGGAAATAACACTATATCCAGACAAGCATGGGTGTGTCGGGACCTGTTAGAAGAATGTA AAAAG
GCCGTGGAGCTTGGGAGAAAGCATCAGGGAACTTAGGCTGCTAGAAATTGTAAGCTACAAAATCATT
GGTGTTCATCAAGAAGATGAACTATTAGAATGTTTATCTCCTGCAACGAGCCGGACGTTTTCGAATAGAG
GAAATCCCTTTGGACCAGGTGGACATAGACAAAGAGAATGAGATGCTTGTACAGTGCGCATTTCCAC
AAAGAGGCTTCGGAACGTTCCGGAATCCCGTTTTGCTGAGGATACACCAGGGCGAGCATTTTCGAGAA
GTGATGAAGCGAATCCAGAGCCTGCTGGACATCCAGGAGAAGGAGTTTGAAGTTTAAATTTGCAATT
GTAATGATGGGCCGACACAGTACATAAATGAAGACGAGTATGAAGTAAATTTGAAGACTTTGAGCCA
CAGCCCGTAATATGTCTCATCCTCGGCCTTGGCTAGGGCTCGACCACTCAACAAAGCCCCAAAGAGG
AGTCGCTACACTTACCTGAAAAGGCCATTAATAATCCATAAC
ACGCGTACGCGGCCGCTCGAG - GFP Tag - GTTTAAAC
  
```

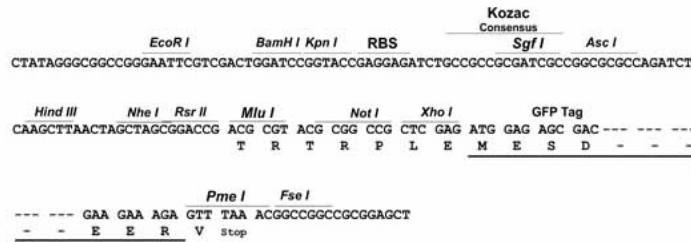
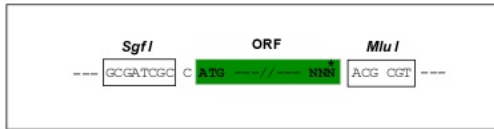
**Protein Sequence:** >Peptide sequence encoded by RG239869  
 Blue=ORF Red=Cloning site Green=Tag(s)

MVMPRFYPDRPHQKSVGFLLQCNAESDSTSWSCHAQAVLKIINYRDEKSFRRISHLFFHKENDWGFN  
 NFAWSEVTDPEKGFIDDDKVTFEVQADAPHGVAWDSKKHTGYVGLKNQGATCYMNSLLQTLFFTNQ  
 LRKAVYMPTEGDDSSKSVPLALQRFVYELQHSKDPVGTKKLTKSFGWETLDSFMQHDVQELCRVLLDN  
 VENKMKGTCEVGTIPKLFGRKMVSYIQCKEVDYRSDRREDDYDIQLSIKGGKNIFFESFVDYVAVEQLDG  
 DNKYDAGEHGLQEAEGVKFLTLPPVLHLQLMRFMYDPQTDQNIKINDRFEFPEQLPLDEFLLQKTDPKD  
 PANYILHAVLVHSGDNHGGHYVYVLPKGDGKWKCFDDVVSRCTKEEAIEHNYGGHDDDLVSRHCTNA  
 YMLVYIRESKLEVLQAVTDHDIQQQLVERLQEEKRIEAQKRKERQEAHLYMQVQIVAEDQFCGHQGN  
 MYDEEKVKYTVFKVLKNSSLAEFVQSLSQTMGFPQDQIRLWPMQARSNGTKRPAMLNDEADGNKTMIEL  
 SDNENPWTIFLETVDPELAASGATLPKFDKDHDVMLFLKMYDPKTRSLNYCGHIYTPISCKIRDLLPVM  
 CDRAGFIQDTSLLIYEEVKPNLTERIQDYDVS LDKALDELMDGDIIVFQKDDPENDNSELPTAKEYFRD  
 LYHRVDVIFCDKTI PNDFGVVTL SNRMNYFQVAKTVAQRLNTDPMLLQFFKSQGYRDGPGNPLRHNYE  
 GTLRDLLQFFKPRQPKL YYQQLKMKITDFENRRSFKCIWLSQFREEEITLYPKHGCVRDLL EECCK  
 AVELGEKASGKLRLLLEIVSYKIIGVHQEDELLECLSPATSRTFRIEEIPLDQVDIDKENEMLVTVAHFH  
 KEVFGTFGIPFLRLRIHQGEHFREVMKRIQSLLDIQEKEFEKFKFAIVMMGRHQYINDEYEVNLDKDFEP  
 QPGNMSHPRPWLGLDHFNKAPKRSRYTYLEKAIKIHN  
 TRTRPLEMESDESGLPAMEIECRITGTLNGVEFELVGGEGTPEQGRMTNKMSTKGALTFSPYLLSHV  
 MGYGFYHFGTYPSTYENPFLHAINNGGYNTRIEKYEDGGVLHVSFSYRYEAGRVIGDFKVMGTGFPED  
 SVIFTDKIIRSNATVEHLHPMGDNDLDGSFTRTFSLRDGGYSSVVDSHMHFKSAIHP SILQNGGPMFA  
 FRRVEEDHSNTELGIVEYQHAFKTPDADAGEERV

**Restriction Sites:** SgfI-MluI

**Cloning Scheme:**

Cloning sites used for ORF Shutting:

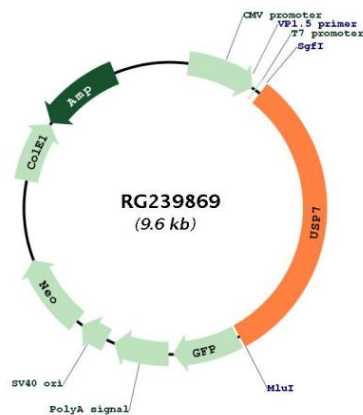


**ACCN:** NM\_001286458

**ORF Size:** 3009 bp

<b>OTI Disclaimer:</b>	The molecular sequence of this clone aligns with the gene accession number as a point of reference only. However, individual transcript sequences of the same gene can differ through naturally occurring variations (e.g. polymorphisms), each with its own valid existence. This clone is substantially in agreement with the reference, but a complete review of all prevailing variants is recommended prior to use. <a href="#">More info</a>
<b>OTI Annotation:</b>	This clone was engineered to express the complete ORF with an expression tag. Expression varies depending on the nature of the gene.
<b>Components:</b>	The ORF clone is ion-exchange column purified and shipped in a 2D barcoded Matrix tube containing 10ug of transfection-ready, dried plasmid DNA (reconstitute with 100 ul of water).
<b>RefSeq:</b>	<a href="#">NM_001286458.2</a>
<b>RefSeq Size:</b>	5456 bp
<b>RefSeq ORF:</b>	3012 bp
<b>Locus ID:</b>	7874
<b>Cytogenetics:</b>	16p13.2
<b>Protein Families:</b>	Druggable Genome, Protease
<b>MW:</b>	117.4 kDa
<b>Gene Summary:</b>	The protein encoded by this gene belongs to the peptidase C19 family, which includes ubiquitinyl hydrolases. This protein deubiquitinates target proteins such as p53 (a tumor suppressor protein) and WASH (essential for endosomal protein recycling), and regulates their activities by counteracting the opposing ubiquitin ligase activity of proteins such as HDM2 and TRIM27, involved in the respective process. Mutations in this gene have been implicated in a neurodevelopmental disorder. [provided by RefSeq, Mar 2016]

**Product images:**



Circular map for RG239869