

## Product datasheet for **RG239866**

### **AASDH (NM\_001286668) Human Tagged ORF Clone**

#### **Product data:**

Product Type:	Expression Plasmids
Product Name:	AASDH (NM_001286668) Human Tagged ORF Clone
Tag:	TurboGFP
Symbol:	AASDH
Synonyms:	ACSF4; LYS2; NRPS998; NRPS1098
Mammalian Cell Selection:	Neomycin
Vector:	pCMV6-AC-GFP (PS100010)
E. coli Selection:	Ampicillin (100 ug/mL)



[View online »](#)

**ORF Nucleotide Sequence:**

>RG239866 representing NM\_001286668.  
 Blue=ORF Red=Cloning site Green=Tag(s)

```
GCTCGTTAGTGAACCGTCAGAATTTTGTAAACGACTCACTATAGGGCGGCCGGGAATTCGTGACTG
GATCCGGTACCGAGGAGATCTGCCGCCACGATCGCC
ATGAAAAATGTAATCTAAAGTATATCCCTTGTGAAAAAACAATAATAAATTTAAATCTTTTCAT
GAAACATTATTGAACATATGATACATTTACAGTGGAAACATAATGACCTAGTGCTCTTCAGACTTCACTGG
AAAAATACTGAGGTGAACCTTGATGCTAAATGATGGAAAAGAGAAATATGAAAAAGAAAAATAAAAAGC
ATAAGTCTGAGCATGTCAATGAAGAAAAAGCAGAAGAACACATGGATCTGAGGCTAAAGCATTGCTTA
GCCTATGTTCTACATACATCAGGGACTACAGGGATACCGAAGATTGTCAGAGTGCCTCATAAGTGTATA
GTACCAAAATCCAGCATTTTCGGGTACTTTTTGACATCACACAAGAAGATGTTTTGTTTCTGGCTTCA
CCTCTGACCTTCGATCCTTCTGTTGTGAAATATTTCTTGCTCTATCAAGTGGTGCCTCTCTGCTTATT
GTACCAACTTCCGTCAAGTTGCTCCCATCAAAATTAGCCAGCGTCTCTTTTCCCATCATAGAGTGACT
GTTTTGCAGGCAACCAACATTGCTTAGAAGATTTGGATCTCAGCTTATCAAGTCAACTGTTTTGTCA
GCCACTACTTCTCTCGAGTATTAGCCCTTGGTGGTGAAGCGTTCCATCATTGACAGTTCTCAGAAGC
TGGAGAGGAGAAGGCAATAAAACACAAATATTTAATGTTTATGGTATCACAGAGGTATCAAGTTGGGCG
ACCATTTATAGGATCCAGAGAAGACTCTTAACCTACTCTCAAATGTGAATTGCCTGTACAACCTGGGA
TTTCCACTTCTTGGAACAGTAGTTGAAGTCAGAGATACTAATGGCTTCACAATTCAGGAAGGCAGTGGC
CAAGTATTTTTAGGTGGCAGAAACAGAGTGTGTTTTCTTGATGATGAAGTGACAGTACCCTTGGCACA
ATGCGAGCTACAGGAGACTTTGTGACTGTGAAAGATGGAGAGATTTTTTTTTGGGACGAAAAGACAGT
CAGATCAAACGTCATGGCAAACGCTTAAACATTGAACTGTGCAACAGGTTGCTGAAGAGCTTCAGCAA
GTGGAGTCTTGTGAGTTACATGGTATAATCAGGAAAAATTAATCTCTCATGGTGTCTAAAGATGCTT
TCAGTAAAAAATACATCTTTAAAGAAGTGCAGAAATATCTTCCAAAGTGCAGTCCCGGATGAGCTT
GTATTGATCGACTCTACCAATTTACATCCCACGCAAAATTGATGTTTTCTGAGTTAAACAAGATATAT
TTAAACTACATAAACTTGAAGTCTGAGAATAAGCTCAGTGGGAAAAGAGGACCTTTGGGAAAAATACAG
TATTTGTGGAAGTCTACTCTGAATCTCCAGAAGATCTTTTGGGGTTCCTGATGAGTCACTCTTCTTA
AATAGTGGTGGAGATTCCTTAAAGTCCATCCGGCTCCTCAGTGAAGTGAAGTGAAGTGAAGTGAAGT
GTACCTGGGCTTCTGAAATTTCTCAGCAGTCCATTTTAGAGATTTAATCACATCCTTCAAACA
GTGGTCCAGATGAAGATGTGACATTGAGGAAAGTGTGCCAAAAAGGAACTCAGCGACATTAAT
CAAGAGGAAGCCAGTGAACATCTTACATCAGAAAGCCATCATGACTTCACTTGCACAAATGAGATT
AATGCTTTTGTGTACTGAGCAGAGGGAGTCAAATTTTGTCTCTGAATCCACTAGTGTTTTAAACAAG
TTAGGACATTGCTTTCAGCCTGTCTTCTGACTCAGTTTACAGACCAACATTCAAAATTTGAAAGGC
TTAAATCTCCAGTTCCTATTGGGAAGTCAAAGATCCATCCTGTGTGAAAAGTTTCTGAAGAGGGG
AAACCTGCGATAGGGACTCAGAAAATGGAGTTACATGTGAGGTGGAGGTGAGACACAGGCAAATGTGTA
GATGCTTACCAGTGGTGTAAATACCCACTTTTGATAAGTCACTACAACGTGTACATTGGTCCCAT
TCTCATAGAAATGAAGGCAGTTGACTTTTACTCTGGGAAGGTAAAATGGGAACAGATTTTGGGAGATCGA
ATTGAATCCTCAGCATGTGTATTAAGTGTGAAACTTTATTGTGGTGGGCTGTTATAATGGATTAGTT
TATGTTCTGAAAAGTAAATAGTGGAGAAAAACTGGATGTTTACTACTGAAGATGCTGTCAAAGCTCG
GCAACCATGGATCCAACACAGGACTCATTACATTGGATCTCATGACCAGCAGCATATGCTTTAGAT
ATTTATAGAAAAGAGTGTGTTTGGAAAGTCAAATGTGGAGGAAGTGTCTTTTCTCTCCGTGTTGAAC
CTGATTCCACATCATTTGATTTTGTACTATTGGGAGGACTTTTACTGGCTGTAATCCTGCTACTGGG
AACGTTATTTGAAACATTCTGTGAAAACCACTCTTCTCTTCCCACAATGTTGCTCACAGTATATT
TGTATTGGCTGTGTAGATGGAAATTTACTCTGCTTACTCACTTTGGAGAACAGGTTTGGCAGTCTCT
ACCAGTGGACCAATCTTTTATCCCGTGTACCTCACCATCAGAGCAAAAAATTTTTTGGTCCCAT
GATTGCTTTATCTACTGTTGAACATGAAAGTCACTGCAGTGGAAATTTGAACTACTTCAAGGGTC
TATGCAACACCGTTTGTCTTCCATAACTACAATGGCAGCAATGAAATGTTGCTGGCAGCAGCATCTACT
GATGGGAAAGTGGATCTTGAATCTCAGAGTGGACAATTGCAAGTGTGTTATGAATCTCTGGAGAA
GTCTTCTCTTCTCTGTGGTCTGGAATCAATGCTCATTATTGGGTGATAGAGATAATTATGTTTATTGT
CTGGATTTATTGGGTGGCAATCAAAA
ACGCGTACGCGGCCGCTCGAG - GFP Tag - GTTTAAAC
```

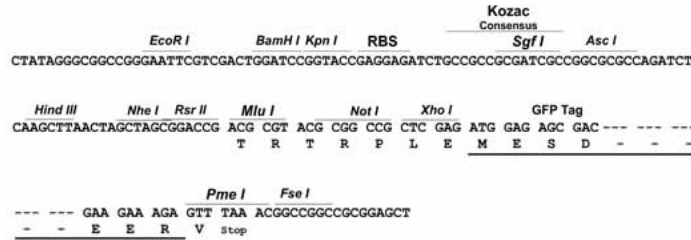
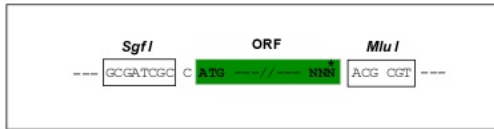
**Protein Sequence:** >Peptide sequence encoded by RG239866  
 Blue=ORF Red=Cloning site Green=Tag(s)

MKKCNLKYILVEKKQINKFKSFHETLLNYDTFTVEHNDLVLFRLHWKNTENVMLNDGKEKYEKEKIKS  
 ISSEHVNEEKAEEHMDLRLKHCLAYVLHTSGTTGIPKIVRPHKCI V PNIQHFRVLF DITQEDVLFAS  
 PLTFDPSVVEIFLALSSGASLLIVPTS VKLLPSKLASVLF SHHRVTVLQATPTLLRRFGSQLIKSTVLS  
 ATTSRLV LALGGEAFPSLTVLRSWRGEGNKTQIFN VYGIT EVSSWATIYRIPEKTLNSTLKCELPVQLG  
 FPLLGT VVEVRDNGFTIQEGSQVFLGGRNRVCFLDDEVT VPLGTM RATGDFVTVKDGEIFFLGRKDS  
 QIKRHGKRLNIELVQQVAEELQQVESCAVTWYNQEKLILFMVSKDASVKEYIFKELQKYLPSHAVPDEL  
 VLIDSLPFTSHGKIDVSELNKIYLNINL KSENKLSGKEDLWEKLQYLWKSTLNL PEDLLRVPDESFL  
 NSGGDSLK SIRLLSEIEKLVGTSVPGLEIILSSSILEIYNHILQTVVPDEDTVFRKSCATKRKLS DIN  
 QEEASG TSLHQAIMFTTCHNEINAFV VLSRGSQILSLNSTRFLTKLGHCS SACS SSVSQTNIQNLKG  
 LNSPVLIGKSKDPSCVAKVSEEGKPAIGTQK MELHVRWRS DTGKCV DASPLVVIPTFDKSSTTVYIGSH  
 SHRMKAVDFYSGKVKEQILGDRIESSACVSKCGNFIVGVCYNGLVYVLKSN SGEK YWMTTEDAVKSS  
 ATMDPTTGLIYIGSHDQHAYALDIYRKKCVWKS KCGGTVFSSPCLNLI PHHLYFATLGGLLAVNPATG  
 NVIWKHSCGKPLFSSPQCCSQYICIGCV DGNLLCFTHFGEQVWFSTSGPIFSSPCTSPSEQKIFFGSH  
 DCFIYCCNMKGHLQWK FETTSRYVATPFAFHNYNGSNEMLLAAASTDGK VWILESQSQQLQSVYELPGE  
 VFSSPVVLESMLIIGCRDNYVYCLDLLGGNQK  
 TRTRPLEMESDESGLPAMEIECRITGTLNGVEFELVGGGEGTPEQGRMTNKMSTKGALTFSPYLLSHV  
 MGYGFYHFGTYP SGYENPFLHAINNGGYNTRIEKYEDGGVLHVSFSYRYEAGRVIGDFKVMGTGFPED  
 SVIFTDKIIRSNATVEHLHPMGDNDLDGSFTRTFSLRDGGYSSVVD SHMHFKSAIHP SILQNGGPMFA  
 FRRVEEDHSNTELGIVEYQHAFKTPDADAGEERV

**Restriction Sites:** Sgfl-MluI

**Cloning Scheme:**

Cloning sites used for ORF Shutting:

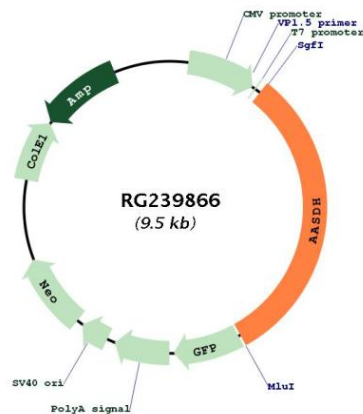


**ACCN:** NM\_001286668

**ORF Size:** 2994 bp

<b>OTI Disclaimer:</b>	The molecular sequence of this clone aligns with the gene accession number as a point of reference only. However, individual transcript sequences of the same gene can differ through naturally occurring variations (e.g. polymorphisms), each with its own valid existence. This clone is substantially in agreement with the reference, but a complete review of all prevailing variants is recommended prior to use. <a href="#">More info</a>
<b>OTI Annotation:</b>	This clone was engineered to express the complete ORF with an expression tag. Expression varies depending on the nature of the gene.
<b>Components:</b>	The ORF clone is ion-exchange column purified and shipped in a 2D barcoded Matrix tube containing 10ug of transfection-ready, dried plasmid DNA (reconstitute with 100 ul of water).
<b>RefSeq:</b>	<a href="#">NM_001286668.2</a>
<b>RefSeq Size:</b>	3342 bp
<b>RefSeq ORF:</b>	2997 bp
<b>Locus ID:</b>	132949
<b>UniProt ID:</b>	<a href="#">Q4L235</a>
<b>Cytogenetics:</b>	4q12
<b>Protein Pathways:</b>	Lysine biosynthesis, Lysine degradation, Metabolic pathways
<b>MW:</b>	111.9 kDa
<b>Gene Summary:</b>	This gene encodes a member of the non-ribosome peptide syntesase (NRPS) enzyme family. The encoded protein contains an AMP-binding domain, PP-binding (phosphopantetheine, or pantetheine 4'phosphate-binding) domain and the Pyrrolo-quinoline quinon (PQQ) binding domain. The protein is expressed in several adult tissues. [provided by RefSeq, Apr 2016]

### Product images:



Circular map for RG239866