

Product datasheet for **RG239863**

RTEL1 (NM_001283010) Human Tagged ORF Clone

Product data:

| | |
|---------------------------|---|
| Product Type: | Expression Plasmids |
| Product Name: | RTEL1 (NM_001283010) Human Tagged ORF Clone |
| Tag: | TurboGFP |
| Symbol: | RTEL1 |
| Synonyms: | C20orf41; DKCA4; DKCB5; NHL; PFBMFT3; RTEL |
| Mammalian Cell Selection: | Neomycin |
| Vector: | pCMV6-AC-GFP (PS100010) |
| E. coli Selection: | Ampicillin (100 ug/mL) |



[View online »](#)

ORF Nucleotide Sequence:

>RG239863 representing NM_001283010.
 Blue=ORF Red=Cloning site Green=Tag(s)

```

GCTCGTTTAGTGAACCGTCAGAATTTTGTAAACGACTCACTATAGGGCGGCCGGGAATTCGTGACTG
GATCCGGTACCGAGGAGATCTGCCGCCCGCATCGCC
ATGCCGTACAATTACTTGTGGATGCCAAGAGCCGCAGAGCACACAACATTGACCTGAAGGGGACAGTC
GTGATCTTTGACGAAGCTACAACGTGGAGAAGATGTGTGAAGAATCGGCATCCTTTGACCTGACTCCC
CATGACCTGGCTTCAGGACTGGACGTATAGACCAGGTGCTGGAGGAGCAGACCAAGGCAGCGCAGCAG
GGTGAGCCCCACCCGGAGTTCAGCGCGGACTCCCCAGCCAGGGCTGAACATGGAGCTGGAAGACATT
GCAAAGCTGAAGATGATCCTGCTGCGCCTGGAGGGGGCCATCGATGCTGTTGAGCTGCTGGAGACGAC
AGCGGTGTACCAAGCCAGGGAGCTACATCTTTGAGCTGTTTGTGAAGCCAGATCACGTTTCAGACC
AAGGGTGCATCCTGGACTCGTGGACCAGATCATCCAGCACCTGGCAGGACGTGCTGGAGTGTTCACC
AACACGGCCGGACTGCAGAAGCTGGCGGACATTATCCAGATTGTGTTAGTGTGGACCCCTCGAGGGC
AGCCCTGGTTCACAGCAGGGCTGGGGCCTTACAGTCTATAAGGTGCACATCCATCCTGATGCTGGT
CACCGGAGGACGGCTCAGCGTCTGATGCCTGGAGCACCCTGCAGCCAGAAAGCGAGGGAAAGTGTCTG
AGCTACTGGTGTTCAGTCCCGGCCACAGCATGCACGAGCTGGTCCGCCAGGGCGCTCCGCTCCCTATC
CTTACCAGCGGCACGCTGGCCCCGGTGTCTCCTTTGCTCTGGAGATGCAGATCCCTTTCCAGTCTGC
CTGGAGAACCACACATCATCGACAAGCACCAGATCTGGGTGGGGTCTGCCAGAGGCCCCGATGGA
GCCAGTTGAGCTCCGCGTTTGACAGACGGTTTTCCGAGGAGTGCTTATCCTCCCTGGGGAAGGCTCTG
GGCAACATCGCCCGCTGGTGCCTATGGGCTCCTGATCTTCTCCCTTCTATCCTGTGATGGAGAAG
AGCCTGGAGTTCTGGCGGGCCCGGACTTGGCCAGGAAGATGGAGGCGCTGAAGCCGCTGTTTGTGGAG
CCCAGGAGCAAAGGCAGCTTCTCCGAGCATTAGTCTTACTATGCAAGGTTGCCGCCCTGGTCC
ACCGGCCACCTTCTTGGCGTCTGCCGGGCAAGGCCAGCGAGGGGCTGGACTTCTCAGACACGAAT
GGCCGTGGTGTGATTGTACGGGCTCCCGTACCCCCACGCATGGACCCCGGGTGTCTCAAGATG
CAGTTCCTGGATGAGATGAAGGGCCAGGGTGGGGCTGGGGCCAGTTCCTCTCTGGGCAGGAGTGGTAC
CGGCAGCAGGCGTCCAGGGCTGTGAACCAGGCCATCGGGCGAGTGATCCGGCACCGCCAGGACTACGGA
GCTGTCTTCTCTGTGACCACAGGTTCCGCTTTGCCGACGCAAGAGCCAACTGCCCTCTGGGTGCGT
CCCCACGTGAGGGTGTATGACAACCTTTGGCCATGTATCCGAGACGTGGCCAGTTCCTCCGTGTTGCC
GAGCGAATATGCCAGCGCCGGCCCCCGGCTACAGCACCCAGTGTGCGTGGAGAAGATGCTGTCAGC
GAGGCCAAGTCGCTGGCCCTTCTTCTCACCAGGAAAGCTAAGAGTCTGGACCTGCATGTCCCAGC
CTGAAGCAGAGGTCCTCAGGGTACCAGCTGCCGGGACCCCGAGAGTAGCTGTGTGGAGTATGAG
CAGGAGCCAGTTCCTGCCCGCAGAGGCCAGGGGGCTGCTGGCCGCCCTGGAGCACAGGCAACAGCGG
GCGGGGAGCCCTGGCGAGGAGCAGGCCACAGCTGCTCCACCCTGTCCCTCCTGTCTGAGAAGAGGCCG
GCAGAAGAACCAGGAGGAGGAGGAAGAAGATCCGGCTGGTACGCCACCCGGAGGAGCCCGTGGTGGT
GCACAGACGGACAGGGCAAGCTTTCATGGTGGCCGTGAAGCAGGAGTTGAGCCAAGCCAACTTTGCC
ACCTTACCCAGGCCCTGCAGGACTACAAGGTTCCGATGACTTCGCCGCCCTGGCCGCTGTCTCGGC
CCCCTCTTTGCTGAGGACCCCAAGAAGCACAACCTGCTCCAAGGCTTCTACCAGTTTGTGCGGCCAC
CATAAGCAGCAGTTTGGAGGTTCTGTATCCAGCTGACAGGACGAGGCTGTGGCTATCGGCTGAGCAC
AGCATTCCCCGAAGGCAGCGGGCACAGCGTCTGGACCCACTGGAAGAACGGCGCCGATCCCCAAG
CTGACCGTGTCCAGGCTGCAGCCAGCAGCTGGACCCCAAGAGCACCTGAACCAGGGCAGGCCCCAC
CTGTGCCAGGCCACCCCAACAGGAGACCCTGGCAGCCAACACAGTGGGGTCTGGAGTGCCAGAG
GCAGGGAAGCAGGGCCAGCACGCGTGTGAGCCTACCTGGCTGATGCCCGAGGGCCCTGGGGTCCGCG
GGCTGTAGCCAACCTTTGGCAGCGCTGACAGCCTATAAGCAAGACGACGACCTCGACAAGGTGCTGGCT
GTGTTGGCCGCCCTGACCACTGCAAAGCCAGAGGACTTCCCCTGCTGCACAGGTTACAGATGTTTGTG
CGTCCACACCACAAGCAGCGTCTCACAGACGTGCACAGACCTGACCGGCCGCCCTACCCGGGCATG
GAGCCACCGGGACCCAGGAGGAGGCTTGGCGTGCCTCCTGTGCTTACCCACAGGGCTCCCCAACCA
GGCCCTCACGGTCCGAGAAGACCGGGAAGACCCAGAGCAAGATCTCGTCTTCTTAGACAGAGGCCA
GCAGGGACTGTGGGGCGGGCGGTGAGGATGCAGTCCCAGCCAGTCTCAGGACCTCCCCAGGGCTC
GCAGCATCTGAGTGGGGCTC
ACGCGTACGCGGCCGCTCGAG - GFP Tag - GTTAAAC
  
```

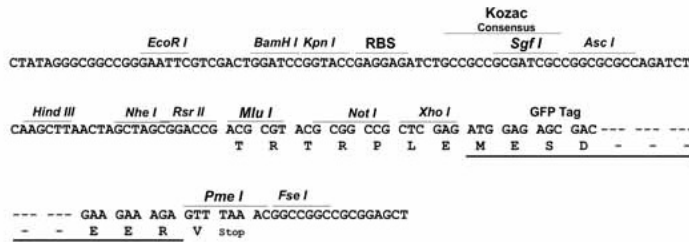
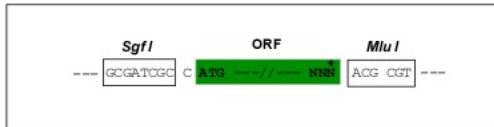
Protein Sequence: >Peptide sequence encoded by RG239863
 Blue=ORF Red=Cloning site Green=Tag(s)

MPYNYLLDAKSRRAHNIDLKGTVVIFDEAHNVEKMCEESASFDLTPHDLASGLDVIDQVLEEQTCAAQ
 GEPHPEFSADSPSPGLNMELEDIAKLKMILLRLEGAIDAVELPGDDSGVTKPGSYIFELFAEAQITFQT
 KGCILDSLQIIQHLGRAGVFTNTAGLQKLADIQIVFSDVPSSESGSPAGLQALQSYKVHIHPDAG
 HRRTAQRSDAWSTTAARKRGKVL SYWCFSPGHSMHELVRQGVRSILITSGTLAPVSSFALEMQIPFPVC
 LENPHIIDKHQIWWGVVPRGPDGQQLSSAFDRRFSEECLSSLGKALGNIARVVPYGLLIFFPSYPVMEK
 SLEFWRRDLARKMEALKPLFVEPRSKGSFSETISAYYARVAAPGSTGATFLAVCRGKASEGLDFSDTN
 GRGVIVTGLPYPPRMDPRVVLKMQFLDEMKGQGGAGGQFLSGQEYRQQASRAVNQAIIGRVIRHRQDYG
 AVFLCDHRFAFADARAQLPSWVRPHRVYDNFGHVIRDVAQFFRVAERTMPAPAPRATAPSVRGEDAVS
 EAKSPGPFFSTRKAKSLDLHVPVSLKQRSSGSPAAGDPESLCEVEYEQEPVAPRQRPRGLLALEHSEQR
 AGSPGEEQAHSCTLSLLSEKRPAAEPRGRKKIRLVSHPEEPVAGAQTDRAKLFMVAVKQELSQANFA
 TFTQALQDYKGSDDFAALACLGPLFAEDPKHNLLQGFYQFVRPHHKQQFEEVCIQLTGRGCGYRPEH
 SIPRRQRAQPVLDPTGRTAPDPKLVSTAAAQQLDPQEHNLQGRPHLSRPPPTGDPGSGPQWGSVPR
 AGKQGGHVASAYLADARRALGSAGCSQLLAALTA YKQDDLDKVLAVLAALTTAKPEDFLLHRFSMFV
 RPHHKQRFSTCTDLTGRPYPGMEPPGPQEERLAVPPVLTHRAPPQGPSRSEKTKTQSKISSFLRQRP
 AGTVGAGGEDAGPSQSSGPPHPAASEWGL
 TRTRPLEMESDESGLPAMEIECRITGTLNGVEFELVGGEGTPEQGRMTNKMSTKGALTFSPYLLSHV
 MGYGFYHFGTYPSTYENPFLHAINNGGYNTRIEKYEDGGVLHVSFSYRYEAGRVIGDFKVMGTGFPEP
 SVIFTDKIIRSNATVEHLHPMGDNDLDGSFTRTFSLRDGGYSSVVDSDSHMHFKSAIHP SILQNGGPMFA
 FRRVEEDHSNTELGIVEYQHAFKTPDADAGEERV

Restriction Sites: SgfI-MluI

Cloning Scheme:

Cloning sites used for ORF Shutting:

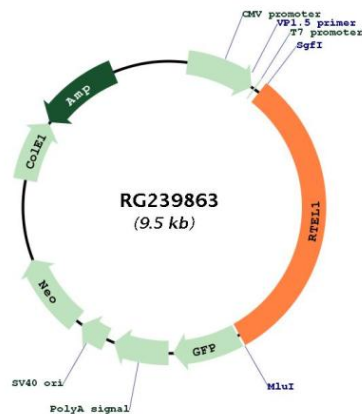


ACCN: NM_001283010

ORF Size: 2988 bp

| | |
|--------------------------|---|
| OTI Disclaimer: | The molecular sequence of this clone aligns with the gene accession number as a point of reference only. However, individual transcript sequences of the same gene can differ through naturally occurring variations (e.g. polymorphisms), each with its own valid existence. This clone is substantially in agreement with the reference, but a complete review of all prevailing variants is recommended prior to use. More info |
| OTI Annotation: | This clone was engineered to express the complete ORF with an expression tag. Expression varies depending on the nature of the gene. |
| Components: | The ORF clone is ion-exchange column purified and shipped in a 2D barcoded Matrix tube containing 10ug of transfection-ready, dried plasmid DNA (reconstitute with 100 ul of water). |
| RefSeq: | NM_001283010.1 , NP_001269939.1 |
| RefSeq Size: | 4691 bp |
| RefSeq ORF: | 2991 bp |
| Locus ID: | 51750 |
| UniProt ID: | Q9NZ71 |
| Cytogenetics: | 20q13.33 |
| Protein Families: | Druggable Genome |
| MW: | 108.9 kDa |
| Gene Summary: | This gene encodes a DNA helicase which functions in the stability, protection and elongation of telomeres and interacts with proteins in the shelterin complex known to protect telomeres during DNA replication. Mutations in this gene have been associated with dyskeratosis congenita and Hoyerall-Hreidarsson syndrome. Read-through transcription of this gene into the neighboring downstream gene, which encodes tumor necrosis factor receptor superfamily, member 6b, generates a non-coding transcript. Alternative splicing results in multiple transcript variants encoding different isoforms. [provided by RefSeq, Sep 2013] |

Product images:



Circular map for RG239863