

Product datasheet for **RG239862**

Eph receptor A7 (EPHA7) (NM_001288629) Human Tagged ORF Clone

Product data:

Product Type:	Expression Plasmids
Product Name:	Eph receptor A7 (EPHA7) (NM_001288629) Human Tagged ORF Clone
Tag:	TurboGFP
Symbol:	EPHA7
Synonyms:	EHK-3; EHK3; EK11; HEK11
Mammalian Cell Selection:	Neomycin
Vector:	pCMV6-AC-GFP (PS100010)
E. coli Selection:	Ampicillin (100 ug/mL)



[View online »](#)

ORF Nucleotide Sequence:

>RG239862 representing NM_001288629.
 Blue=ORF Red=Cloning site Green=Tag(s)

```
GCTCGTTTAGTGAACCGTCAGAATTTTGTAAACGACTCACTATAGGGCGGCCGGGAATTCGTGCGACTG
GATCCGGTACCGAGGAGATCTGCCGCCCGCATCGCC
ATGGTTTTTCAAACCGGTACCCCTTCATGGATTATTTTATGCTACATCTGGCTGCTCCGCTTTGCACAC
ACAGGGGAGCGCAGGCTGCGAAGGAAGTACTACTGCTGGATTCTAAAGCACAACAAACAGAGTTGGAG
TGATTCTCCTCCACCCAATGGGTGGGAAGAAATAGTGGTTTGATGAGAACTATACCCCGATACGA
ACATACCAGTGTGCCAAGTCATGGAGCCCAACAAAACAACCTGGCTGCGGACTAACTGGATTTCCAAA
GGCAATGCACAAAGGATTTTGTAGAATTGAAATTCACCCTGAGGGATTGAACAGTCTTCTGGAGTA
CTGGGAACTTGAAGGAAACATTTAATTTGACTATTATGAAACAGACTATGACTGGCAGGAATATA
AGAGAAAACCTCTATGTAATAATAGACACCATTGCTGCAGATGAAAGTTTTACCCAAGGTGACCTTGGT
GAAAGAAAGATGAAGCTAACACTGAGGTGAGAGAGATTGGACCTTTGTCCAAAAGGGATTCTATCTT
GCCTTTCAGGATGTAGGGCTTGCATAGCTTTGGTTTCTGTCAAAGTGTACTACAAGAAGTCTGGTCC
ATTATTGAGAAGTATAGCTATCTTCCAGATACAGTACTGGTTTCCAGATTTTCTCTTTAGTCGAGGTT
CGAGGGACATGTGTGACAGTGCAGAGGAAGAAGCGGAAAACGCCCCAGGATGACTGCAGTGCAGAA
GGAGAATGGTTAGTGCCATTGGAAAATGTATCTGCAAAGCAGGCTACCAGCAAAAAGGAGACACTGT
GAACCTGTGGCCGTGGGTTCTACAAGTCTTCTCAAGATCTTCAAGTCTCTCGTTGTCCAACCTCAC
AGTTTTTCTGATAAAGAAGGCTCCTCCAGATGTGAATGTGAAGATGGGTATTACAGGGCTCCATCTGAC
CCACCATACGTTGCGTGCACAAGGCTCCATCTGCACCACAGAACCTCATTTTCAACATCAACAAAACC
ACAGTAAGTTTGGAAATGGAGTCTCCTGCAGACAATGGGGGAAGAAACGATGTGACCTACAGAATTTG
TGTAAAGCGGTGCAGTTGGGAGCAGGGCGAATGTGTTCCCTGTGGGAGTAACATTGGATACATGCCCCAG
CAGACTGGATTAGAGGATAACTATGCTACTGTGCTGACTGGACCTGCTAGCCACGCTAATTATACTTTGAA
GTTGAAGCTGTAATGGAGTTTCTGACTTAAGCCGATCCAGAGGCTCTTTGCTGCTGTCAGTATCAC
ACTGGTCAAGCAGCTCCCTCGAAGTGAGTGGAGTAATGAAGGAGAGAGTACTGCAGCGGAGTGTGAG
CTTTCCTGGCAGGAACCAGAGCATCCCAATGGAGTCATCACAGAAATGAAATCAAGTATTACGAGAAA
GATCAAAGGGAACGGACCTACTCAACAGTAAAAACCAAGTCTACTTCAGCCTCCATTAATAATCTGAAA
CCAGGAACAGTGTATGTTTTCCAGATTCGGGCTTTTACTGCTGCTGGTTATGAAATTACAGTCCAGAA
CTTGATGTTGCTACACTAGAGGAAGCTACAGCTACAGCTGTCTCCAGTGAACAGAATCCTGTTATTATC
ATTGCTGTGGTTGCTGTAGCTGGGACCATCATTTTGGTGTTCATGGTCTTTGGCTTCATCATTGGGAGA
AGGCACTGTGGTTATAGCAAAGCTGACCAAGAAGGCGATGAAGAGCTTTACTTTTCAATTTAAATTTCCA
GGCACCAAAACCTACATTGACCCTGAAAACCTATGAGGACCCAAAATAGAGCTGTCCATCAATTCGCCAAG
GAGCTAGATGCCTCCTGTATTAATAATTGAGCGTGTGATTGGTGCAGGAGAATTCGGTGAAGTCTGCAGT
GGCCGTTTGAACCTCCAGGGAAAAGAGATGTTGCAGTAGCCATAAAAACCTGAAAAGTTGGTTACACA
GAAAAACAAGGAGAGACTTTTTGTGTGAAGCAAGCATCATGGGGCAGTTTGACCACCCGAATGTTGTC
CATTTGGAAGGGGTTGTTACAAGAGGAAAACAGTCATGATAGTAAATAGAGTTTATGAAAATGGAGCC
CTAGATGCATTTCTCAGGAAACATGATGGGCAATTTACAGTCATTCAGTTAGTAGGAATGCTGAGAGGA
ATTGCTGCTGGAATGAGATATTTGGCTGATATGGGATATGTTACAGGGACCTTGCAGCTCGCAATATT
CTTGCAACAGCAATCTCGTTTGTAAAGTGTGAGATTTTGGCCTGTCCCGAGTTATAGAGGATGATCCA
GAAGCTGTCTATACAACACTGGTGGAAAAATCCAGTAAGGTGGACAGCACCCGAAGCCATCCAGTAC
CGGAAATTCACATCAGCCAGTGTATGGAGCTATGGAATAGTCATGTGGGAAGTTATGCTTATGGA
GAAAGACCTTATTTGGACATGTCAAATCAAGATGTTATAAAAAGCAATAGAAGAAGGTTATCGTTTACCA
GCACCCATGGACTGCCAGCTGGCCTTACCAGCTAATGTTGGATTGTTGGCAAAAAGGAGCGTGTGAA
AGGCCAAAATTTGAACAGATAGTTGGAATTTAGACAAAATGATTCGAAACCCAAAATAGTCTGAAAAC
CCCCTGGAACTGTAGTAGGCCAATAAGCCCTCTTCTGGATCAAACACTCCTGATTTCACTACCTTT
TGTTCAAGTTGGAATGAGTACAAGCTATTAAGATGGAAAGATATAAAGATAATTTACGGCAGCTGGC
TACAATCCCTTGAAATCAGTAGCCAGGATGACTATTGAGGATGTGATGAGTTTAGGGATCACACTGGT
GGTCATCAAAGAAAATCATGAGCAGCATTGACTATGAGAGCAAAAATGCTACATTTACATGGAAT
GGCATTCAAGTG
ACGCGTACGCGGCCGCTCGAG - GFP Tag - GTTTAAAC
```

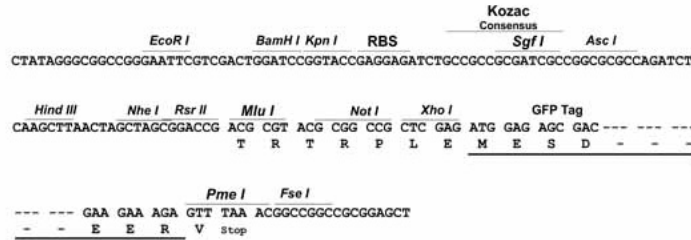
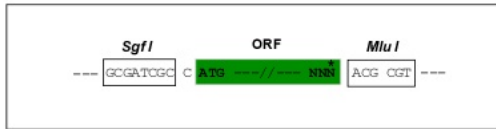
Protein Sequence: >Peptide sequence encoded by RG239862
 Blue=ORF Red=Cloning site Green=Tag(s)

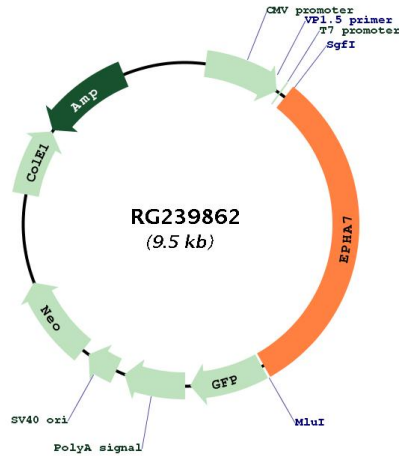
MVFQTRYPSWIILCYIWLLRFAHTGEAQAQKEVLLLDKAQQTELEWISSPPNGWEEISGLDENYTPIR
 TYQVCQVMEPNQNNWLRNWNISKGNAQRIFVELKFTLRDCNSLPGVLGTCKETFNLYYYEYTDYDTRNI
 RENLYVKIDTIAADESFTQDGLGERKMLNTEVREIGPLSKKGFYLAQFDVGACIALVSVKVVYKCCWS
 I IENLAIFPDTVTGSEFSSLVEVRGTCVSSAEEEEAENAPRMHCSAEGEWLVPIGKCICKAGYQQKGDTC
 EPCGRGFYKSSSQDLQCSRCPTHFSKDEGSSRCECEDGYRAPSDPPYVACTRPPSAPQNLIFINQNT
 TVSLEWSPPADNGRNDVYRILCKRCSWEQGEVPCGSNIGYMPQQTGLEDNVYVMDLLAHANYTFE
 VEAVNGVSDLRSQRLFAAVSITTGQAAPSQVSGVMKERVLRQSVELSWQEPEHPNGVITEYEIKYYEK
 DQRERTYSTVTKSTASINNLKPGTVVYFQIRAF TAAGYGNYSRDLVATLEEATATAVSSEQNPVII
 IAVVAVAGTIILVFMVGFIIIGRRHCGYSKADQEGDEELYFHFKFPGTKYIDPETYEDPNRAVHQFAK
 ELDASCIKIERVIGAGEFGEVCSGRLKLPKRDVAVAIKTLKVGYTEKQRRDFLCEASIMQFDHPNVV
 HLEGVVTRGKPVMIIVIEFMENGALDAFLRKHDGQFTVIQLVGMLRGIAGMRYLADMGYVHRDLAARNI
 LVNSNLVCKVSDFGLSRVIEDDPEAVYTTGGKIPVRWTAPEAIQYRKFTSASDVWSYGIWMWEVMSYG
 ERPYWDMSNQDVKAIEEGYRLPAPMDCPAGLHQLMLDCWQKERAERPKEQIVGILDKMI RNPNSLKT
 PLGTCSRPI SPLLDQNTPDFTTFCVSGEWLQAIKMERYKDNFTAAGYNSLESVARMTIEDVMSLGITLV
 GHQKKIMSSIQTMRAMLHLHGTGIQV
 TRTRPLEMESDESGLPAMEIECRITGTLNGVEFELVGGEGTPEQGRMTNKMSTKGALTFSPYLLSHV
 MGYGFYHFGTYPSTYENPFLHAINNGGYNTRIEKYEDGGVLHVSFSYRYEAGRVIGDFKVMGTGFPED
 SVIFTDKIIRSNATVEHLHPMGDNDLDGSFTRTFSLRDGGYSSVVD SHMHFKSAIHPSILQNGGPMFA
 FRRVEEDHSNTELGIVEYQHAFKTPDADAGEERV

Restriction Sites: SgfI-MluI

Cloning Scheme:

Cloning sites used for ORF Shutting:



Plasmid Map:


ACCN: NM_001288629

ORF Size: 2979 bp

OTI Disclaimer: The molecular sequence of this clone aligns with the gene accession number as a point of reference only. However, individual transcript sequences of the same gene can differ through naturally occurring variations (e.g. polymorphisms), each with its own valid existence. This clone is substantially in agreement with the reference, but a complete review of all prevailing variants is recommended prior to use. [More info](#)

OTI Annotation: This clone was engineered to express the complete ORF with an expression tag. Expression varies depending on the nature of the gene.

Components: The ORF clone is ion-exchange column purified and shipped in a 2D barcoded Matrix tube containing 10ug of transfection-ready, dried plasmid DNA (reconstitute with 100 ul of water).

RefSeq: [NM_001288629.2](#)

RefSeq Size: 6629 bp

RefSeq ORF: 2982 bp

Locus ID: 2045

UniProt ID: [Q15375](#)

Cytogenetics: 6q16.1

Protein Families: Druggable Genome, Protein Kinase, Transmembrane

Protein Pathways: Axon guidance

MW: 112 kDa

Gene Summary:

This gene belongs to the ephrin receptor subfamily of the protein-tyrosine kinase family. EPH and EPH-related receptors have been implicated in mediating developmental events, particularly in the nervous system. Receptors in the EPH subfamily typically have a single kinase domain and an extracellular region containing a Cys-rich domain and 2 fibronectin type III repeats. The ephrin receptors are divided into 2 groups based on the similarity of their extracellular domain sequences and their affinities for binding ephrin-A and ephrin-B ligands. Increased expression of this gene is associated with multiple forms of carcinoma. Alternative splicing results in multiple transcript variants. [provided by RefSeq, Dec 2013]