

Product datasheet for **RG239860**

SCUBE3 (NM_001303136) Human Tagged ORF Clone

Product data:

Product Type:	Expression Plasmids
Product Name:	SCUBE3 (NM_001303136) Human Tagged ORF Clone
Tag:	TurboGFP
Symbol:	SCUBE3
Synonyms:	CEGF3; SSFSC2
Mammalian Cell Selection:	Neomycin
Vector:	pCMV6-AC-GFP (PS100010)
E. coli Selection:	Ampicillin (100 ug/mL)



[View online »](#)

ORF Nucleotide Sequence:

>RG239860 representing NM_001303136.
 Blue=ORF Red=Cloning site Green=Tag(s)

```
GCTCGTTAGTGAACCGTCAGAATTTTGTAAACGACTCACTATAGGGCGGCCGGGAATTCGTGCGACTG
GATCCGGTACCGAGGAGATCTGCCGCCCGGATCGCC
ATGGGCTCGGGGCGCGTACCCGGGCTCTGCCTGCTTGTCTGCTGGTCCACGCCCGCCGCCAGTAC
AGCAAAGCCGCGCAAGATGTGGATGAGTGTGTGGAGGGGACTGACAACTGCCACATCGATGCTATCTGC
CAGAACACCCCGAGGTCAACAAGTGCATCTGCAAGTCTGGCTACACAGGGGACGGCAAACACTGCAAA
GACGTGGATGAGTGCGAGCGAGAGGATAATGCAGTTGTGTGCATGACTGTGTCAACATCCCTGGCAAT
TACCGGTGTACCTGCTATGATGGATTCCACCTGGCACATGACGGACACAACCTGTCTGGATGTGGACGAG
TGTGCCGAGGGCAACGGCGGCTGTGACGAGAGTGTGTCAACATGATGGGACGCTATGAGTGCCACTGC
CGGAAGGCTTCTTCTCAGCGACAACCAGCATACCTGTATCCAGCGGCCAGAAGGAATGAATTGCATG
AACAGAACCACGGCTGTGCCACATTTGCCGGGAGACACCAAGGGGGTATTGCCTGTGAATGCCGT
CCTGGCTTTGAGCTTACCAAGAACCAACGGGACTGAAATGACATGCAACTATGGTAACGGCGGCTGC
CAGCACACGTGTGATGACACAGAGCAGGGTCCCGGTGCGGCTGCCATATCAAGTTTGTGCTCCATACC
GACGGGAAGACATGCATCGAGACCTGTGCTGTCAACAACGGGGGTGTGACAGTAAGTGCCATGATGCA
GCGACTGGTGTCCACTGCACCTGCCCTGTGGGCTTCATGCTGCAGCCAGACAGGAAGACGTGCAAAGAT
ATAGATGAGTGCCGCTTAAACAACGGGGCTGTGACCATATTTGCCGCAACACAGTGGGACGCTTCGAA
TGCAGTTGCAAGAAAGGCTATAAGCTTCTCATCAATGAGAGGAACTGCCAGGATATAGACGAGTGTTC
TTTGATCGAACCTGTGACCACATATGTGTCAACACACCAGGAAGCTTCCAGTGTCTCTGCCATCGTGGC
TACCTGTTGTATGGTATCACCCACTGTGGGGATGTGGATGAATGCAGCATCAACCGGGGAGGTTGCCGC
TTTGGCTGCATCAACACTCCTGGCAGCTACCAGTGTACCTGCCAGCAGGCCAGGGTCCGCTGCCTGG
AATGGCAAAGATTGCACAGAGCCACTGAAGTGTGACGGCAGTCCCTGGGGCCTCGAAAGCCATGCTCAG
TGCAACCGGTCTGGCAAGAAGGACACCTGTGCCCTGACCTGTCCCTCAGGGCCGGATTTTGGCCAGAG
TCTGAGAATGGTTCACGGTGTGCTGTGGGACCCAGCCAGGGCTGTCCAGCCGAGCTGGCCAC
AATGGGAACAGCACCAACTCCAACCACTGCCATGAGGCTGCAGTGTGTCCATTAACAACGGGGCTCC
TTCAAGATCAAGGATGCCAAATGCCGTTTGCACCTGCGAAACAAAGGCAAAACAGAGGAGGCTGGCAGA
ATCACAGGGCCAGGTGGTGGCCCTGCTCTGAATGCCAGGTACCTTTCATCCACCTTAAGTGTGACTCC
TCTCGAAGGGCAAGGGCCGACGGGCCCGGACCCCTCCAGGCAAGAGGTCAAGGCTCACCCCTGGAA
CTGGAGGCAGAGGTGAGGCGGAAGAAACACAGCCAGCTGTGGGCTGCCCTGCCCTCCGACAGCGAATG
GAACGGCGGCTGAAAGGATCCCTGAAGATGCTCAGAAAGTCCATCAACCAGGACCGCTTCTGCTGCGC
CTGGCAGGCCCTTATTGAGCTGGCCACAAGCCGGGCTGGTAGCCGGGAGCGAGCAGAGCCGATG
GAGTCTGTAGGCCCGGGCAGCACCGTGTGGGACCAAGTGTGTGAGTGTGCCCGCAGGGAACGATTTAC
CACGGCCAGACGGAGCAGTGTGTGCCATGCCAGCGGGCACCTTCCAGGAGAGAGAAGGGCAGCTCTCC
TGCGACCTTTGCCCTGGGAGTGTGCCACGGGCTCTTGGAGCCACCAACGTCACCACGTGTGACGGT
CAGTGCCACCTGGCCAACACTGTAGATGGGTTCAAGCCCTGTGAGCCATGCCACGTGGCACCTAC
CAACCTGAAGCAGGACGGACCTATGCTTCCCTGTGGTGGGGCCTCACCACCAAGCATGAAGGGGCC
ATTTCTTCCAAGACTGTGACACCAAGTCCAGTGTCTCCAGGGCACTACTACAACACCAGCATCCAA
CGCTGTATTCGCTGTGCCATGGGCTCCTATCAGCCGACTTCCGTGAGAACTTCTGCAGCCGCTGTCCA
GGAAACACAAGCACAGACTTTGATGGCTTACCAGTGTGGCCCAATGCAAGAATCGTCAGTGTGGTGGG
GAGCTGGGTGAGTTCAGTGGCTATATTGAGTCCCCCAACTACCCGGGCAACTACCCAGCTGGTGTGGAG
TGCATCTGGAACATCAACCCCCACCAAGCGCAAGATCCTTATCGTGGTACCAGAGATCTTCTGCCA
TCTGAGGATGAGTGTGGGACGTCCTCGTCATGAGAAAGAACTCATCCCCATCTCCATTACCACTTAT
GAGACCTGCCAGACCTACGAGCGTCCCATTGCCTTCACTGCCGTTCCAGGAAGCTCTGGATCAACTTC
AAGACAAGCGAGGCCAACAGCGCCCGTGGCTTCCAGATTCCCTATGTTACCTATGATGAGGACTATGAG
CAGCTGGTAGAAGACATTGTGCGAGATGGCCGGCTCTATGCCTCTGAAAACCACCAGGAGATTTAAAG
GACAAGAAGCTCATCAAGGCTTCTTTGAGGTGTAGCCACCCCGAAGTACTTCAAGTACACAGAG
AAACACAAGGAGATGCTGCCAAAATCCTCATCAAGCTGTCCGCTCAAAGTTTCCAGCTTCTGAGG
CCCTACAAA
ACGCGTACCGGCCGCTCGAG - GFP Tag - GTTTAAAC
```

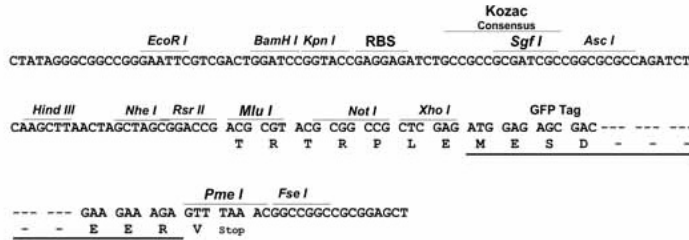
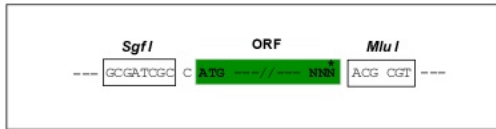
Protein Sequence: >Peptide sequence encoded by RG239860
 Blue=ORF Red=Cloning site Green=Tag(s)

MGSGRVPGLCLLVLLVHARAAQYSKAAQDVDECEVGTDNCHIDAICQNTPRSYKICKSGYTGDKHCK
 DVDECEREDNAGCVHDCVNIIPGNYRCTCYDGFHLAHDGHNCLDVDECAEGNGGCQQSCVNMMSYECHC
 REGFFLSDNQHTCIQRPEGMNMCNKHGCAHICRETPKGGIACECRPGFELTKNQRDCKLTCNYGNGGC
 QHTCDDTEQGPRCGCHIKFVLHTDGTKCIETCAVNNGGCDSKCHDAATGVHCTCPVGFMLQDRKTKD
 IDECRLNNGGCDHICRNTVGSFECSCCKGYKLLINERNQCQDIDECDFDRTCDHICVNTPGSFQCLCHR
 YLLYGITHCGDVECSINRGGCRFGCINTPGSYQCTCPAGQGRHLHWNGKDCTEPLKCGSPGASKAMLS
 CNRSGKKDTCALTCPSRARFLPESENGFTVSCGTPSPRAAPARAGHNGNSTNSNHCEAAVLSIKQRAS
 FKIKDAKRLHLRNKGKTEEAGRITGPGGAPCSECQVTFIHLKCDSSRKGKRRARTPPGKEVTRLTLE
 LEAEVRAEETTASGLPCLRQMERRLKGLKMLRKSINQDRFLRLAGLDYELAHKPLVAGERAEPM
 ESCRPGQHRAGTKCVSPPQGTYYHGQTEQCVPCAGTFQEREGQLSCDLCPGSDAHGPLGATNVTTAG
 QCPPGQHSVDGFKPCQPCPRGTYPQPEAGRTLCPFCGGGLTTKHEGAI SFQDCDVKVQCSPGHYNTSIH
 RCIRCAMGSYQPDFRQNFCSRCPGNTSTDFDGS TSAQCKNRQCGGELGEFTGYIESPNYPGNYPAGVE
 CIWNINPPPKRILIVVPEIFLPSSEDCDVLVMRKNSSPSSITTYETCQTYERPIAFTARSRKLWINF
 KTSEANSARGFIPIVVTYDEYEQLVEDIVRDGRLYASENHQEILKDKKLIKAF FEVL AHPQNYFKYTE
 KHKEMLPKSFIKLLRSKVSSFLRPYK
 TRTRPLEMESDESGLPAMEIECRITGTLNGVEFELVGGEGTPEQGRMTNKMSTKGALTFSPYLLSHV
 MGYGFYHFGTYPSTYENPFLHAINNGGYNTRIEKYEDGGVLHVSFSYRYEAGRVIGDFKVMGTGFPED
 SVIFTDKIIRSNATVEHLHPMGDNDLDGSFTRTFSLRDGGYSSVVD SHMHF KSAIHP SILQNGGPMFA
 FRRVEEDHSNTELGIVEYQHAFKTPDADAGEERV

Restriction Sites: Sgfl-MluI

Cloning Scheme:

Cloning sites used for ORF Shutting:

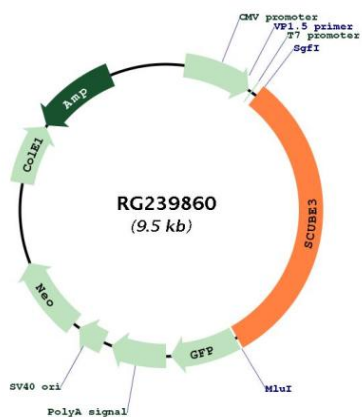


ACCN: NM_001303136

ORF Size: 2976 bp

OTI Disclaimer:	The molecular sequence of this clone aligns with the gene accession number as a point of reference only. However, individual transcript sequences of the same gene can differ through naturally occurring variations (e.g. polymorphisms), each with its own valid existence. This clone is substantially in agreement with the reference, but a complete review of all prevailing variants is recommended prior to use. More info
OTI Annotation:	This clone was engineered to express the complete ORF with an expression tag. Expression varies depending on the nature of the gene.
Components:	The ORF clone is ion-exchange column purified and shipped in a 2D barcoded Matrix tube containing 10ug of transfection-ready, dried plasmid DNA (reconstitute with 100 ul of water).
RefSeq:	NM_001303136.2
RefSeq Size:	7732 bp
RefSeq ORF:	2979 bp
Locus ID:	222663
UniProt ID:	Q8IX30
Cytogenetics:	6p21.31
Protein Families:	Druggable Genome, Secreted Protein
MW:	109.6 kDa
Gene Summary:	This gene encodes a member of the signal peptide, complement subcomponents C1r/C1s, Uegf, bone morphogenetic protein-1 and epidermal growth factor-like domain containing protein family. Overexpression of this gene in human embryonic kidney cells results in secretion of a glycosylated form of the protein that forms oligomers and tethers to the cell surface. This gene is upregulated in lung cancer tumor tissue compared to healthy tissue and is associated with loss of the epithelial marker E-cadherin and with increased expression of vimentin, a mesenchymal marker. In addition, the protein encoded by this gene is a transforming growth factor beta receptor ligand, and when secreted by cancer cells, it can be cleaved in vitro to release the N-terminal epidermal growth factor-like repeat domain and the C-terminal complement subcomponents C1r/C1s domain. Both the full length protein and C-terminal fragment can bind to the transforming growth factor beta type II receptor to promote the epithelial-mesenchymal transition and tumor angiogenesis. Alternative splicing results in multiple transcript variants. [provided by RefSeq, Dec 2014]

Product images:



Circular map for RG239860