

Product datasheet for **RG239857**

MMS19 (NM_001289403) Human Tagged ORF Clone

Product data:

| | |
|---------------------------|---|
| Product Type: | Expression Plasmids |
| Product Name: | MMS19 (NM_001289403) Human Tagged ORF Clone |
| Tag: | TurboGFP |
| Symbol: | MMS19 |
| Synonyms: | CIAO4; hMMS19; MET18; MMS19L |
| Mammalian Cell Selection: | Neomycin |
| Vector: | pCMV6-AC-GFP (PS100010) |
| E. coli Selection: | Ampicillin (100 ug/mL) |



[View online »](#)

ORF Nucleotide Sequence:

>RG239857 representing NM_001289403.
 Blue=ORF Red=Cloning site Green=Tag(s)

```

GCTCGTTTAGTGAACCGTCAGAATTTTGTAAACGACTCACTATAGGGCGGCCGGGAATTCGTGCGACTG
GATCCGGTACCGAGGAGATCTGCCGCCACGATCGCC
ATGGCCGCTGCCCGGCTGTGGAGGCGGCGCGCCTATGGGTGCCCTATGGGGCCTCGTGCACGACTTC
GTGCTGGGTGAGCAAGAGGGCCCGCTGACCAAGTGGCTGCAGATGTAAATCTGGCAACTATACAGTG
TTACAAGTTGTGGAAGCCCTGGGTCTCTAGAGAATCCAGAACCCCAACTCGGGCAGCAGCAATC
CAGCTTTTGTACAGGTGCTACTCCACTGTACACCTTGCTCCTGGAGAAGGAAGTGTACACCTGATA
CTGTTCTATGAGAACCGCTGAAGGACCATCATCTTGATCCCATCTGCTCCTGCAGGGTTGAAGGCA
CTTAGCCTGTGTGGCCCTGCCCCAGGGCTGGCTGTTTCTGTGCTTAAAGCCATCTTCCAGGAAGTG
CATGTACAGTCCCTGCCACAGGTGGACGACACAGTCTACAATATCATACCAATTTTATGCGAACC
CGGAAGAAGGACCCCTTGTGGAGGAGTGTGTTGAAGTGCATCTGTTATTTCCCTATCGATTTTACC
CCTCCACCTAATGATCCCATGGTATCCAGAGAGAAGACCTCATCCTGAGTCTTCGCGCTGTGCTGGCT
TCTACACCAGATTTGCTGAGTTTCTGCTGCCCTGTTGATTGAGAAAGTGGATTCTGAGTTTCTGAGT
GCCAAGTTGGATTCTCTACAGACTCTGAATGCTTGTGCTGTGTATGGACAGAAGGAACCTGAAGGAC
TTCTCCCGACCTTTGGGCTTCTATCCGAGAGAGGTGTTCCAGACGGCAAGTGAAGCGGGTGGAGGCA
GAGGGCCTGGCGGCCCTCCACTCCCTGACTGCGTGTGTTGCTCGCTCTGTGCTGAGGGCTGATGCTGAG
GACCTCCTTGACTCCTTCCCTTAGCAACATTCTACAGGACTGCAGGCACCACCTGTGTGAACCGGACATG
AACTGGTGTGGCCTAGTGCCAAGCTGTTGCAGGCAGTGCAGGTGCATCTGCCCGGCCCTGTGACTCT
GTCACCAGCAATGTAAGCTTTACTGCTGGAACAGTTCACAAGCACAGTGCAGAGCAGCCAGCGGGCGG
ACAATCCTTGAATGCTCCTGGGTTTCTGAAGCTGCAGCAGAAATGGAGCTATGAAGACAAAGATCAA
AGGCTCTGAATGGCTTCAAGGACCAGCTGTGCTCACTGGTATTATGAGCTAACAGACCCAGCACC
CAGCTTACAGCTTGTGGCATCCGTACACTGACAGTCTTGGGTGCCAGCCAGATCTCCTATCCTTATGAG
GACTTGGAGCTGGCAGTGGGTACCTGTACAGACTGAGCTTCTGAAGGAGGATCCAGAGTTGCAGG
GTGGCAGCACTGGAAGCATCAGGAACCCTGGTCTCTTACCCTGTGGCCTTACAGCAGCCACCTCGTA
CCCAAGCTCGTGAGGAGCTGCGTGTAGGGGAGTCAAATTTGACTAACGGAGATGAGCCACCCAATGC
TCCCGGCATCTGTGCTGTCTGCAAGCCTTGTGAGTGTATCAACACATCCAGCATCGTCAAGGAGACA
CTGCTCTGCTGCTGCAGCATCTTGGCAAGTGAACAGAGGGAATATGGTTGCACAATCCAGTGACGTT
ATTGCTGTCTGTCAGAGCCTCAGACAGATGGCAGAAAAATGTCAGCAGGACCCTGAGAGTTGCTGGTAT
TTCCACCAGACAGCTATACCTTGCCTGCTTGCCTTGGCTGTGCAGGCCTCTATGCCAGAGAAGGAGCCC
TCAGTTCTGAGAAAAGTACTATTGGAGGATGAGGTGTTGGCTGCCATGGTGTCTGTCAATGGCACTGCT
ACAACCCACCTGAGCCCTGAGTTAGCTGCCAGAGTGTGACACACATTGTGCCCTCTTCTTGGATGGC
AACGTGTCCTTTCTGCCTGAAAACAGCTTCCCAGCAGATTCCAGCCATTCCAGGATGGCTCCTCAGGG
CAGAGGGCGGTGATTGCACTGCTTATGGCCTTGTCTGCTCCCTGCCTCGAAATGTGAAATCCCTCAG
CTGAACCAACTCATGCGGGAGCTTTTGGAACTGAGCTGCTGCCACAGCTGCCCTTTTCTTCCACCGCT
GCTGCCAAGTGTCTTGCAGGACTCCTCAACAAGCACCTGCAGGGCAGCAGCTGGATGAATTCCTACAG
CTAGCTGTGGACAAAGTGGAGGCTGGCTGGGCTCTGGCCCTGTCGTAGTCAGGCCTTCACTCTTCTT
CTCTGGTAAACAAAGCCCTAGTGCTCAGATACCATCCTCTCAGCTCCTGCCTTACAGCCCGGCTCATG
GGCCTCCTGAGTGACCCAGAAATAGGTCCAGCAGCAGCTGATGGCTTCTCTGCTCATGTCTGACTGC
ACTGATGTGCTGACTCGTGTGGCCATGCCAAGTGCAGGATCATGTTCCGCCAGCGGTTCTTACAGAT
AATGTGCTGCTTTGGTCCAGGGCTTCCATGCTGCTCCCAAGATGTGAAGCCAAACTACTTGAAGGGT
CTTTCTCATGTACTTAAACAGGCTGCCAAAGCCTGACTCTTGGCAGAGCTGCCACGCTTCTTCCCTTG
CTGCTGGAGGCCCTGTCTGCCCTGACTGTGTGGTGCAGCTCTCCACCCTCAGCTGCCTTACGCCTCTT
CTACTGGAAGCACCCCAAGTCATGAGTCTTACGTTGGACACCCTCGTACCAAGTTTCTGAACCTCAGC
TCTAGCCCTTCCATGGCTGTCCGGATCGCCGACTGCAGTGCATGCATGCTCTCACTCGCCTGCCACC
CCTGTGCTGCTGCCGTACAAACCACAGGTGATTGGGCTTAGCCAAACCCTGGATGACAAGAAGAGA
CTGGTGGCAAGGAAGCAGTGTACAGCCAGAGGGGAGTGGTTTCTGTTGGGAGCCCTGGCAGC
ACGCGTACGCGGCCGCTCGAG – GFP Tag – GTTTAAAC
  
```

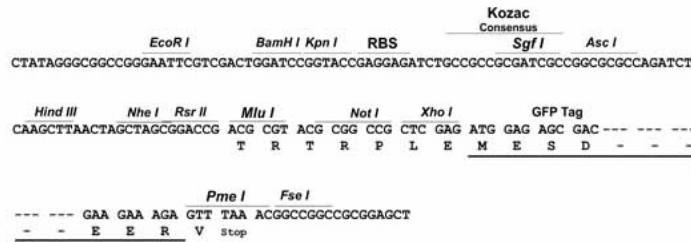
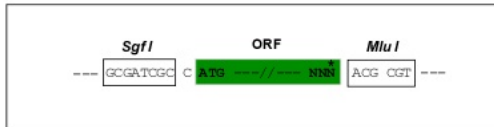
Protein Sequence: >Peptide sequence encoded by RG239857
 Blue=ORF Red=Cloning site Green=Tag(s)

MAAAAAVEAAAPMGALWGLVHDFVVGQEGPADQVAADVKSNGYTVLQVVEALGSSLENPEPRTRARAI
 QLLSQVLLHCHTLLLEKEVVHLILFYENRLKDHHLVIPSVLQGLKALSLCVALPPGLAVSVLKAIFQEV
 HVQSLPQVDRHTVYNIITNFMRTREEGPFVEELFEVTSYFPIDFTPPPNDPHGIQREDLILSLRAVLA
 STPRFAEFLPLLIEKVDSEVLSAKLDSLQTLNACCAVYQKELKDFLPSLWASIRREVFQTASERVEA
 EGLAALHSLTACLSRSVLRADAEDLLDSFLSNILQDCRHHLCPEPMKLVWPSAKLLQAAAGASARACDS
 VTSNVLPDLLLEQFHKHSQSSQRRITILEMLLGFLKLQQKWSYEDKDQRPLNGFKDQLCSLVMALTDPTST
 QLQLVGIRTLTVLGAQPDLLSYEDLELAVGHLYRLSFLKEDSQSCRVAALEASGTLAALYPVAFSSHLV
 PKLAEELRVGESNLNNGDEPTQCSRHLCCQLASAVSTHPSIVKETPLLLQHLWQVNRGNMVAQSSDV
 IAVCQSLRQMAEKQQDPESCWYFHQTAIPCLLALAVQASMPKEPSVLRKVLLEDEVLAAAMVSVIGTA
 TTHLSPELAAQSVTHIVPLFLDGNVSFLPENSFSPRFQPFQDGSSGQRRLLIALLMAFVCSLPRNVEIPQ
 LNQLMRELELSCCHSCPFSSTAAAKCFAGLLNKHPAGQQLDEFLLAVDKVEAGLGGGPCRSQAFLL
 LWYTKALVLRYPHLSLCLTARLMGLLSDPELGPAAADGFSLLMSDCTDVLTRAGHAEVRIMFRQRF
 NVPALVQGFHAAPOQVKNYKGLSHVLNRLPKPVLLPELPTLLSLLLEALSCPDCVVQLSTLSCLQPL
 LLEAPQVMSLHVDLTVTKFLNLSSSPSMAVRIALQCMHALTRLPTVLLPYKQVIRALAKPLDDKKR
 LVRKEAVSARGEWFLLGSPGS
 TRTRPLEMESDESGLPAMEIECRITGTLNGVEFELVGGEGTPEQGRMTNKMSTKGALTFSPYLLSHV
 MGYGFYHFGTYPSTYENPFLHAINNGGYNTRIEKYEDGGVLHVSFSYRYEAGRVIGDFKVMGTGFPED
 SVIFTDKIIRSNATVEHLHPMGDNDLDGSFTRTFSLRDGGYSSVVDSDSHMHFKSAIHPSILQNGGPMFA
 FRRVEEDHSNTELGIVEYQHAFKTPDADAGEERV

Restriction Sites: SgfI-MluI

Cloning Scheme:

Cloning sites used for ORF Shutting:

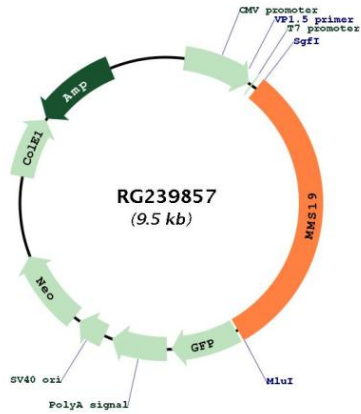


ACCN: NM_001289403

ORF Size: 2961 bp

| | |
|--------------------------|--|
| OTI Disclaimer: | The molecular sequence of this clone aligns with the gene accession number as a point of reference only. However, individual transcript sequences of the same gene can differ through naturally occurring variations (e.g. polymorphisms), each with its own valid existence. This clone is substantially in agreement with the reference, but a complete review of all prevailing variants is recommended prior to use. More info |
| OTI Annotation: | This clone was engineered to express the complete ORF with an expression tag. Expression varies depending on the nature of the gene. |
| Components: | The ORF clone is ion-exchange column purified and shipped in a 2D barcoded Matrix tube containing 10ug of transfection-ready, dried plasmid DNA (reconstitute with 100 ul of water). |
| RefSeq: | NM_001289403.1 , NP_001276332.1 |
| RefSeq Size: | 3574 bp |
| RefSeq ORF: | 2964 bp |
| Locus ID: | 64210 |
| UniProt ID: | Q96T76 |
| Cytogenetics: | 10q24.1 |
| Protein Families: | Druggable Genome, Transcription Factors |
| MW: | 108.8 kDa |
| Gene Summary: | Key component of the cytosolic iron-sulfur protein assembly (CIA) complex, a multiprotein complex that mediates the incorporation of iron-sulfur cluster into apoproteins specifically involved in DNA metabolism and genomic integrity. In the CIA complex, MMS19 acts as an adapter between early-acting CIA components and a subset of cellular target iron-sulfur proteins such as ERCC2/XPD, FANCI and RTEL1, thereby playing a key role in nucleotide excision repair (NER), homologous recombination-mediated double-strand break DNA repair, DNA replication and RNA polymerase II (POL II) transcription (PubMed:22678362, PubMed:22678361, PubMed:29225034, PubMed:23585563). As part of the mitotic spindle-associated MMXD complex, plays a role in chromosome segregation, probably by facilitating iron-sulfur cluster assembly into ERCC2/XPD (PubMed:20797633). Indirectly acts as a transcriptional coactivator of estrogen receptor (ER), via its role in iron-sulfur insertion into some component of the TFIIH-machinery (PubMed:11279242).[UniProtKB/Swiss-Prot Function] |

Product images:



Circular map for RG239857