

Product datasheet for **RG239856**

BNC1 (NM_001301206) Human Tagged ORF Clone

Product data:

Product Type:	Expression Plasmids
Product Name:	BNC1 (NM_001301206) Human Tagged ORF Clone
Tag:	TurboGFP
Symbol:	BNC1
Synonyms:	BNC; BSN1; HsT19447; POF16
Mammalian Cell Selection:	Neomycin
Vector:	pCMV6-AC-GFP (PS100010)
E. coli Selection:	Ampicillin (100 ug/mL)



[View online »](#)

ORF Nucleotide Sequence:

>RG239856 representing NM_001301206.
 Blue=ORF Red=Cloning site Green=Tag(s)

```

GCTCGTTAGTGAACCGTCAGAATTTTGTAAACGACTCACTATAGGGCGGCCGGGAATTCGTGCGACTG
GATCCGGTACCGAGGAGATCTGCCGCCACGATCGCC
ATGCGGTGTAGAAACATGTTCTTCTCATTAAAGGCATCTCTTTGTGGCTGCGGGGCTGCCACCGCTCCG
AGTCTGACAGCTATCAGCTGTACTGAACTGTAGTTGCCAAAGTTTCAAACCCGGGAAAAATAACCAC
CGTCAAGTGTACCAATGCAAGCATGGATGGGTGGCCACGCTCTAAGTAAGCTAAGGATCCCCCATG
TATCCAACAAGCCAGGTGGAGATTGTCCAGTCCATGTAGTGTGGATATTAGCAGCCTCATGCTCTAT
GGGACCCAGGCCATCCCCGTTCCGCTAAAAATCCTACTGGACCGGCTCTTCAGTGTGTTGAAGCAAGAT
GAGGTTCTCCAGATCCTCCATGCCTTGGACTGGACACTTCAGGATTATATCCGTGGATACGTAAGTGCAG
GATGCATCAGGAAAGGTGTTGGATCACTGGAGCATCATGACCAGTGAGGAAGAAGTGCCACCTTGACG
CAGTTCCTTCGTTTTGGAGAGACCAAATCTATAGTTGAACTCATGGCAATCAAGAGAAAGAAGAGCAA
TCCATCATCATAACACCTCCACAGCAAATGTAGATATCAGGGCTTTCATCGAGAGCTGCAGTACAGG
AGTTCTAGCCTCCCCTCTGTGGACAAAGAAACCCAGCAGTATACACCCCTTTGAGAACCTCATA
AGCAACATGACTTTCATGCTGCCTTCCAGTCTTCAACCCTCTGCCTCTGCCTGATAGGGTCATTG
CCCGAACAAATATGTTGGAGCAGGGTCATGACCAAAGTCAGGACCCCAAACAGGAAGTCCATGGGCC
TTCCCTGACAGCAGCTTCTTAACCTCCAGTTCACACCATTTTCAGGTTGAAAAAGATCAGTGTAAAC
TGTCCGGATGCTATTACTAAAAAAGAAGACAGCACCCATTTAAGTGACTCCAGCTCATACAACATTGTC
ACTAAGTTTGAAGGACACAGTTATCCCCTGAGGCCAAAGTGAAGCCTGAGAGGAATAGCCTTGGTACA
AAGAAGGGCCGGGTGTTCTGCACTGCATGTGAGAAGACCTTCTATGACAAAGGCACCCCTCAAATCCAC
TACAATGCCGTCCACTTGAAGATCAAGCATAAGTGCACCATCGAAGGGTGAACATGGTGTTCAGTCC
CTAAGGAGCCGGAATCGCCATAGCGCAACCCCAACCCCTCGGCTGCACATGCCAATGAACAGAAAAA
CGGGACAAAGACCTCAGGAACAGCCTGAACCTGGCCAGCTCTGAGAACTACAAGTGGCCAGGTTTACA
GTGACGTCCCAGACTGTAGGCCTCTCCAGCTACCCTGGTTCAGGAGAGGATTCCAAAGGCCAACCA
GCCTTCCCAAACATTGGGCAAAATGGTGTGCTTTTTCCCAACCTAAAGACAGTCCAGCCAGTCTTCCCT
TTCTACCGCAGTCCAGCCACGCCTGCCGAGGTAGCAAACACGCCTGGGATACTCCCTTCCCTCCCGCTG
TTGTCTCTTCAATCCCAGAACAGCTCATTCAAACGAAATGCCATTTGATGCCCTTCCCAAGAAGAAA
TCCAGGAAGTCCAGTATGCCTATCAAAAAGAGAAAGAAGCTGTGAAAATAGCTAATGAGAAAAGACAC
AACCTCAGCTCAGATGAAGACATGCCCCACAGGTGGTCAAGTGAAGATGAGCAGGAGGCCTGCAGTCT
CAGTACACAGAGTATCTGAGGAGCAGCATGTACAGTCAAGGAGGCTTAGGGAAGCCTTCCCTGAAGGG
GAGAGGCCCTGCCATCGTGAATCAGTAATTGAGTCCAGTGGAGCCATCAGCCAAACCCCTGAGCAGGCC
ACACACAATTCAGAGAGGGAGACTGAGCAGACACCAGCATTGATCATGGTGCCAAGGGAGGTGAGGAT
GGTGGCCATGAACACTACTTACACCTGGGATGGAACCCCAAGTTCCTTTTTCTGACTACATGGAAGT
CAGCAGCGCCTGCTGGTGGGGGACTCTTCAGTGTCTTGTCCAACAGGGGAATGGCTTTTCTTGTCTT
GAAGATTCTAAGAAGTGGAGCACGTGGGTGAGCATGCATTAGCAAGGCAGATAGAAGAAAATCGCTT
CAGTGTGACATCTGCAAGAAGACCTTTAAAAATGCTTGTAGTGTGAAAATTCATCACAAGAATATGCAT
GTCAAAGAAATGCACACATGCACAGTGGAGGGCTGTAATGCTACCTTTCCCTCCCGCAGGAGCAGAGAC
AGACACAGCTCAAACCTAAACCTCCACCAAAAAGCATTGAGCCAGGAAGCATTGGAGAGTGTGAAGAT
CATTTCCGTGCAGCTTACCTTCTGAAAGATGTGGCTAAGGAAGCCTATCAGGATGTGGCTTTTACACAG
CAAGCCTCCCAGACATCTGTCATCTTCAAAGGAACAAGTGAATGGGCAGTCTGGTTTACCAATAACG
CAAGTCCACAGTCCAGCCTGGAGAGCTACAACCTGGCCCTTGGAGCGAGGGCACCATCTGGATTG
AGCACTACCTCGAGCATGAAGTCAAGAGTACAGCCATTCTTCTGGGACTCTGACGGGTGAGTGAAG
GAAGGCACTGTGCTTATGGAGGACAGTGTGGAACTGTGAAGGGTGGAGCCTTGTCCCTGGGGAAGAT
GAGTACCCATCTGTGCTCTGATGGAGAAGGCTGACCAGAGCCTTGTAGCCTGCCTTCTGGGTTGCC
ATAACCTGTCATCTCTGCCAAAAGACATACAGTAACAAAGGGACCTTTAGGGCCACTACAAAATGTG
CACCTCCGGCAGCTCCACAAATGCAAGTACCAGGCTGCAACACCATGTTTTCGTCTGTTGCGAGCTGA
AACAGACACAGCCAGAATCCCAACCTGCACAAAAGCCTGGCCTCATCTCCAAGTACCTCCAG
ACGCGTACGCGGCCGCTCGAG - GFP Tag - GTTTAAAC
  
```

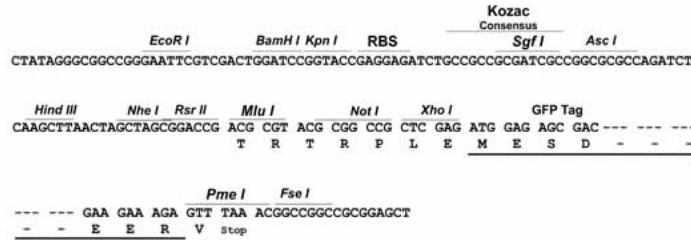
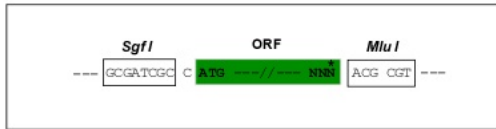
Protein Sequence: >Peptide sequence encoded by RG239856
 Blue=ORF Red=Cloning site Green=Tag(s)

MRCRNMFFSFKASLCGCGAATAPSLTAISCTLNCSQSFKPGKINHRQCDQCKHGWAHALSKLRIPPM
 YPTSQVEIVQSNVVDISSLMLYGTQAIPIVRLKILLDRLFSVLKQDEVLQILHALDWTLDQYIRGYVLQ
 DASGKVLDDHWSIMTSEEEVATLQQFLRFGETKSIVELMAIQEKEEQSIIIPPSTANVDIRAFIESCSHR
 SSSLPTPVDKGNPSSIHPPFENLISNMTFMLPFQFFNPLPPALIGSLPEQYMLEQGHQSDQDPKQEVHGP
 FPDSSFLTSSSTPFQVEKDQCLNCPDAITKKEDSTHLSOSSSYNIIVTKFERTQLSPEAKVKPERNSLGT
 KKGRVFTACEKTFYDKGTLKIHYNVHLKIKHKCTIEGCMVFSLSRSNRHSANPNRHLHMPMNRNN
 RDKDLRNSLNLASSENKCPGFTVTSPDCRPPPSYPGSGEDSKGQPAFPNIGQNGVLFNPLKTVQPVLP
 FYRSPATPAEVANTPGILPSLPLLSSSIPEQLISNEMPFDALPKKSRKSSMPIKIEKEAVEIANEKRH
 NLSDEDMPLQVSEDEQEACSPQSHRVEEQHVQSGGLKPFPEGERPCHRESVIESSGAIQTPEQA
 THNSERETEQTALIMVPREVEDGGHEHYFTPGMEPQVPFSDYMELQQRLLAGGLFSALSNRGMAFPCL
 EDSKELEHVGHALARQIEENRFQCDICKKTFKNACSVKIHKKNMHVEMHTCTVEGCNATFPSRRSRD
 RHSSNLNLHQKALSQEALSESDFRAAYLLKDVAKAYQDVAFTQQASQTSVIFKGTSRMGLSVYPIT
 QVHSASLESYNSGPLSEGTILDSTSSMKSESSSHSSWSDGVSSEEGTVLMEGSDGNCEGSSLVPGED
 EYPICVLMEKADQSLASLPSGLPITCHLCQKTYSNKGTFRAYHKTVHLRQLHKCKVPGCNTMFSSVRSR
 NRHSQPNLHKSLASSPSHLQ
 TRTRPLEMESDESGLPAMEIECRITGTLNGVEFELVGGEGTPEQGRMTNKMSTKGALTFSPYLLSHV
 MGYGFYHFGTYPSTYENPFLHAINNGGYNTRIEKYEDGGVLHVSFSYRYEAGRVIGDFKVMGTGFPED
 SVIFTDKIIRSNATVEHLHPMGDNDLDGSFTRTFSLRDGGYSSVVDSDSHMHFKSAIHPSILQNGGPMFA
 FRRVEEDHSNTELGIVEYQHAFKTPDADAGEERV

Restriction Sites: SgfI-MluI

Cloning Scheme:

Cloning sites used for ORF Shutting:

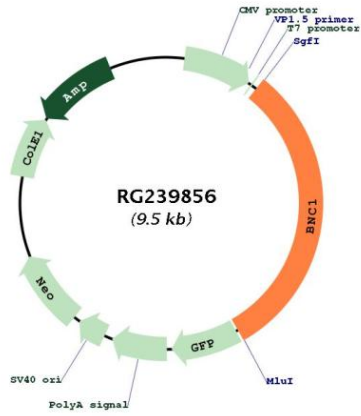


ACCN: NM_001301206

ORF Size: 2961 bp

OTI Disclaimer:	<p>Due to the inherent nature of this plasmid, standard methods to replicate additional amounts of DNA in E. coli are highly likely to result in mutations and/or rearrangements. Therefore, OriGene does not guarantee the capability to replicate this plasmid DNA. Additional amounts of DNA can be purchased from OriGene with batch-specific, full-sequence verification at a reduced cost. Please contact our customer care team at custsupport@origene.com or by calling 301.340.3188 option 3 for pricing and delivery.</p> <p>The molecular sequence of this clone aligns with the gene accession number as a point of reference only. However, individual transcript sequences of the same gene can differ through naturally occurring variations (e.g. polymorphisms), each with its own valid existence. This clone is substantially in agreement with the reference, but a complete review of all prevailing variants is recommended prior to use. More info</p>
OTI Annotation:	This clone was engineered to express the complete ORF with an expression tag. Expression varies depending on the nature of the gene.
Components:	The ORF clone is ion-exchange column purified and shipped in a 2D barcoded Matrix tube containing 10ug of transfection-ready, dried plasmid DNA (reconstitute with 100 ul of water).
RefSeq:	NM_001301206.2
RefSeq Size:	4763 bp
RefSeq ORF:	2964 bp
Locus ID:	646
UniProt ID:	Q01954
Cytogenetics:	15q25.2
MW:	110.3 kDa
Gene Summary:	This gene encodes a zinc finger protein present in the basal cell layer of the epidermis and in hair follicles. It is also found in abundance in the germ cells of testis and ovary. This protein is thought to play a regulatory role in keratinocyte proliferation and it may also be a regulator for rRNA transcription. Disruption of this gene has been implicated in premature ovarian failure as well as testicular premature aging. [provided by RefSeq, Sep 2020]

Product images:



Circular map for RG239856