

Product datasheet for **RG239854**

Pumilio 2 (PUM2) (NM_001282790) Human Tagged ORF Clone

Product data:

Product Type:	Expression Plasmids
Product Name:	Pumilio 2 (PUM2) (NM_001282790) Human Tagged ORF Clone
Tag:	TurboGFP
Symbol:	Pumilio 2
Synonyms:	PUMH2; PUML2
Mammalian Cell Selection:	Neomycin
Vector:	pCMV6-AC-GFP (PS100010)
E. coli Selection:	Ampicillin (100 ug/mL)



[View online »](#)

ORF Nucleotide Sequence:

>RG239854 representing NM_001282790.
 Blue=ORF Red=Cloning site Green=Tag(s)

```

GCTCGTTAGTGAACCGTCAGAATTTTGTAAACGACTCACTATAGGGCGGCCGGGAATTCGTGCGACTG
GATCCGGTACCGAGGAGATCTGCCGCCACGATCGCC
ATGAATCATGATTTTCAAGCTCTTGCAATAGAACTCGGGGAATGGGAGAGCTTTTGCCTACAAAAAG
TTTTGGGAACCTGATGATTTCAACAAAAGATGGACAAAAGGCATATTTCTTGGGGATGATGAATGGAGA
GAGACTGCATGGGGAGCTTCTCACCATTCAATGTCCCAGCCTATTATGGTACAGAGAAGATCTGGACAG
GGTTTTTATGAAACAGTGAAGTAAATGCAATACTGTCTCCGCGATCAGAAAAGTGGAGGCCCTTGGTGTG
AGCATGGTAGAATATGTATTAAGTTCTTCTCCTGCTGATAAATTGGATTCTCGATTTAGGAAGGGAAT
TTTGGCACTAGAGATGCTGAAACAGATGGACCTGAGAAAGGAGATCAAAAAGGCAAGGCTTCTCCATTT
GAGGAGGACCAAAACAGAGATCTTAAACAAGGAGATGATGATTTCTAAAATAAATGGCAGAGGTTTG
CCAAATGGAATGGATGCCGATTGCAAAGATTTAATCGTACTCCTGGAAGTCGTAAGCCTCTCCAAC
GAAGTAGTTGAGCGCTTGGGCCCAATACTAATCCCTCAGAAGGACTGGGGCCTCTTCTAATCCTACA
GCTAATAAACCACTTGTGAAGAATTTTCAAATCCTGAAACTCAGAATCTGGATGCCATGGAACAAGTT
GGTCTGGAATCCTTACAGTTTACTATCCTGGTAAATCAGGTACCAATGGACTCTTACAGGACTACTGTA
GGCCTTTTTGACTACAATTTCCAGCAGCAGCTCTTTCAGAGGACTAATGCACTAACAGTTCAACAGTTA
ACTGCAGCTCAACAGCAGCAATATGCATTAGCAGCAGCTCAGCAGCCACATATAGCTGGTGTATTCTCA
GCAGGCCCTTGCTCCAGCTGCATTTGTGCCAAATCCATACATTATTAGTGTGCTCCTCCAGGGACCGAT
CCGTATACTGCAGCAGGATTGGCTGCAGCAGCTACATTAGCAGGTCCAGCAGTGGTTCCACCTCAGTAT
TACGGCGTTCCATGGGGGGTGTATCCAGCCAATTATTTACAGCAGCAAGCTGCAGCTGCGGCAAAATAC
ACAGCCAGTCAGCAAGCAGCATCACAAGCTCAGCCTGGACAGCAACAGGTTCTCCGTGCTGGAGCAGGT
CAGCGTCTCTTACTCCCAATCAGGGTCAGCAAGGGCAGCAAGCAGAATCACTTGGCGAGCTGCAGCA
GCAAAATCCAACATTGGCTTTTGGTCAGGGTCTTGCTACTGGCATGCCAGGCTATCAAGTACTAGCTCCA
ACTGCCTATTATGATCAGACTGGTGCCTTAGTGGTTGGCCTGGAGCAAGGACTGGCCTTGAGCTCCA
GTTTCGGTAAATGGCTCCAACACCTGTTTTAATTAGTTCAGCAGCAGCACAAGCTGCAGCAGCAGCAGCA
GCTGGAGGAACTGCAAGTAGCCTTACAGGCAGCACAATGGTCTGTTTCGGCCAATTGGCACTCAGCCA
CCACAGCAGCAGCAACAGCAGCCAAGCACTAATCTGCAATCTAATTCATTTTATGGAAGCAGTCTTTTG
ACTAATAGCTCCCAGAGTAGTCTTTATTTTCTCATGGACCTGGTCAACCTGGAAGTACATCTCTTGGC
TTTGAAGTGGTAACTCTTTGGGTGCTGCTATAGGCTCAGCCCTCAGTGGATTTGGTTCATCAGGAGGA
CTGACAAAATGGTAGTGGTCGATATATCTCTGCAGCACCTGGAGCAGAAGCAAAATATCGAAGTGCTTCA
AGCACTTCCAGTCTATTTAGCTCCAGCAGCCAGCTCTTTCCTCCTTCCCGCTTCCGTATAATAGGTCT
GATATTATGCCTTCTGGCCGAGTAGATTATTGGAAGATTTTCAAAAACAACCGCTTCCCAAACCTTCAG
CTTAGAGACTTGATTGGACATATAGTTGAGTTTTCTCAAGACCAGCATGGTTCTAGATTCATACAGCAA
AACTAGAGAGAGCTACTCCAGCTGAGCGACAGATGGTATTTAATGAAATTCGCAAGCAGCCTATCAA
TTAATGACTGATGTTTTTGGCAACTATGTTATACAGAAGTTTTTTGAGTTTGGGAGTCTGGATCAAAAA
TTAGCCCTGGCTACTCGTATTCGTGGTCATGTTCTACCTTAGCCTTGCAAGTGTATGGCTGCCCGGTT
ATTCAGAAAAGCATTAGAATCTATTTCTTCTGACCAGCAGAGTAAATGGTAAAGGAGCTGGATGGTCA
GTGCTCAAATGTGTGAAAGATCAGAATGGAACCATGTTGTACAAAAATGTATCGAATGTGTTTCAGCCA
CAGTCACTACAGTTCATCATTGATGCTTTCAAGGACAAGTATTTGTGCTTCAACTCATCCTTATGGC
TGCAAGTAATTAGCGCATCCTAGAGCATTGCACTGCAGAACAGACCTTACCTATCTTAGAAGAATC
CACCAACATACAGAGCAGTTGGTACAGGATCAGTATGGCAATTATGTTATTCAGCATGTAAGTGGAAAC
GGTCGACCTGAAGACAAGAGCAAAATGTTTCCGAAATCAGGGGAAAGGTTTTAGCCCTGAGTCAACAC
AAATTTGCCAGCAATGTAGTAGAAAAGTGTGTTACTCATGCCCTCCCGTGTGAGAGAGCTTTACTGATT
GACGAGGTTTGTGCCAGAATGATGGTCTCACAGTGCCTTATACACCATGATGAAGGACCAGTATGCC
AATTACGTGGTTCAAAGATGATTGATATGGCTGAACCTGCTCAGAGAAAAGATAATCATGCACAAGATT
CGACCTCACATTACTACTTTGCGCAAAACACATACGGGAAGCATATACTGGCCAAGTTGAAAAAGTAT
TATTTGAAGAATAGCCCGGACCTAGGACCTATTGGAGGACCACCAATGGAATGCTG
ACGCGTACGCGGCCGCTCGAG – GFP Tag – GTTTAAAC
  
```

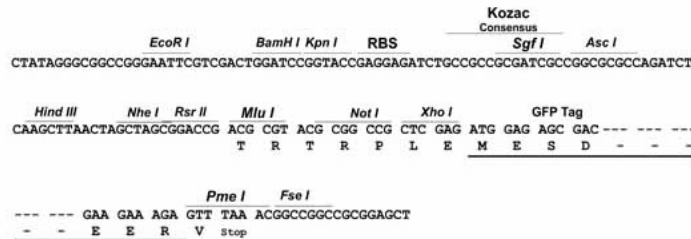
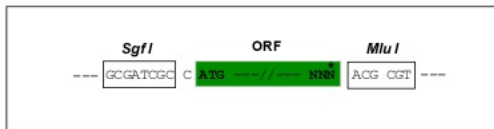
Protein Sequence: >Peptide sequence encoded by RG239854
 Blue=ORF Red=Cloning site Green=Tag(s)

MNHDFQALALESRGMGELLPTKKFWEPDDSTKDGQKGI FLGDDEWRETAWGASHHMSQPIMVQRRSGQ
 GFHGNSEVNAILSPRSESGGLVSMVEYVLS SSPADKLD SRFKGNFGTRDAETDGEKGDQK GKASPF
 EEDQNRDLKQGD DDDSK INGRGLPNGMDADCKDFNRTPGSRQASPT E VVERLGPNTNPSEGLGPLNPT
 ANKPLVEEF SNPETQNL DAMEQV GLESLQFDYPGNQVPM DSSGATVGLFDYNSQQQLFQRTNALTVQQL
 TAAQQQYALAAAQQPHIAGVFSAGLAPAAFVPNPYIISAAPP GTDPYTAAGLAAAATLAGPAVPPQY
 YGVPWGVYPANLFQQQAAAAANNTASQQAASQAQPGQQVLRAGAGQRPLTPNQGGQQQAESLAAAAA
 ANPTLAFGQGLATGMPGYQVLAPTAYDQTGALVVGPGARTGLGAPVRLMAPTPVLISSAAAQAAAAA
 AGGTASSLTGSTNGLFRPIGTQPPQQQQPSTNLQSN SFYGSSSLTNSSQSSSLF SHGPGQPGSTSLG
 FGGNSLGA AIGSALSGFGSSGGLTNGSGRYISAAPGAEAKYRSASSTSLFSSSSQLFPPSRLRYNRS
 DIMPSGRSRLLED FRNRRFNLQLRDLIGHIVEFSQDQHGSRF IQQKLERATPAERQMVFNEILQAAAYQ
 LMTDVFNGYVIQKFF EFGSLDQKLALATRIRGHV LPLALQMYGCRVIQKALESISSDQQSEMVKELDGH
 VLKCVKQDQNGNHVVQKCI ECVPQSLQFIIDAFKQGVFLSTHPYGCRVIQRILEHCTAEQTLPILEEL
 HQHTEQLVQDQYGNVVIQHVLEHGRPEDKSKIVSEIRGKVLALSQHKFASNVVEKCVTHASRAERALLI
 DEVCCQNDGPHSALYTMKQDYANYVVQK MIDMAEPAQRKIMHKIRPHITTLRKYTYGKHILAKLEKY
 YLKNSPDLGPIGGPPNGML
 TRTRPLEMESDESGLPAMEIECRITGTLNGVEFELVGGGEGTPEQGRMTNKMSTKGALTFSPYLLSHV
 MGYGFYHFGTYP SGYENPFLHAINNGGYNTRIEKYEDGGVLHVSFSYRYEAGRVIGDFKVMGTGFPED
 SVIFTDKIIRSNATVEHLHPMGDNDLDGSFTRTFSLRDGGYSSVVD SHMHFKSAIHPSILQNGGPMFA
 FRRVEEDHSNTELGIVEYQHAFKTPDADAGEERV

Restriction Sites: SgfI-MluI

Cloning Scheme:

Cloning sites used for ORF Shutting:

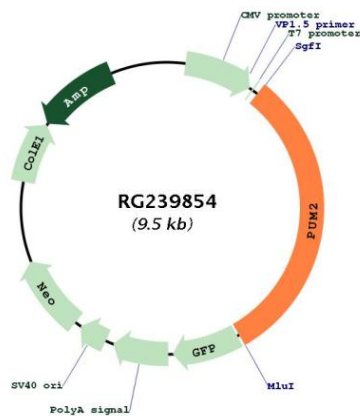


ACCN: NM_001282790

ORF Size: 2955 bp

OTI Disclaimer:	The molecular sequence of this clone aligns with the gene accession number as a point of reference only. However, individual transcript sequences of the same gene can differ through naturally occurring variations (e.g. polymorphisms), each with its own valid existence. This clone is substantially in agreement with the reference, but a complete review of all prevailing variants is recommended prior to use. More info
OTI Annotation:	This clone was engineered to express the complete ORF with an expression tag. Expression varies depending on the nature of the gene.
Components:	The ORF clone is ion-exchange column purified and shipped in a 2D barcoded Matrix tube containing 10ug of transfection-ready, dried plasmid DNA (reconstitute with 100 ul of water).
RefSeq:	NM_001282790.2
RefSeq Size:	5877 bp
RefSeq ORF:	2958 bp
Locus ID:	23369
Cytogenetics:	2p24.1
MW:	106.5 kDa
Gene Summary:	This gene encodes a protein that belongs to a family of RNA-binding proteins. The encoded protein functions as a translational repressor during embryonic development and cell differentiation. This protein is also thought to be a positive regulator of cell proliferation in adipose-derived stem cells. Alternate splicing results in multiple transcript variants. [provided by RefSeq, Sep 2013]

Product images:



Circular map for RG239854