

Product datasheet for **RG239844**

TIE2 (TEK) (NM_001290078) Human Tagged ORF Clone

Product data:

| | |
|---------------------------|--|
| Product Type: | Expression Plasmids |
| Product Name: | TIE2 (TEK) (NM_001290078) Human Tagged ORF Clone |
| Tag: | TurboGFP |
| Symbol: | TIE2 |
| Synonyms: | CD202B; GLC3E; TIE-2; TIE2; VMCM; VMCM1 |
| Mammalian Cell Selection: | Neomycin |
| Vector: | pCMV6-AC-GFP (PS100010) |
| E. coli Selection: | Ampicillin (100 ug/mL) |



[View online »](#)

ORF Nucleotide Sequence:

>RG239844 representing NM_001290078.
 Blue=ORF Red=Cloning site Green=Tag(s)

```

GCTCGTTTAGTGAACCGTCAGAATTTTGTAAACGACTCACTATAGGGCGGCCGGGAATTCGTGACTG
GATCCGGTACCGAGGAGATCTGCCGCCCGGATCGCC
ATGGACTCTTTAGCCAGCTTAGTTCTCTGTGGAGTCAGCTTGCTCCTTTCTGCTTCCTTCTACCAGCT
ACTTTAACTATGACTGTGGACAAGGGAGATAACGTGAACATATCTTTCAAAAAGGTATTGATTAAGAA
GAAGATGCAGTGATTTACAAAAATGGTTCTTCATCCATTCAGTGCCCGGCATGAAGTACCTGATT
CTAGAAGTACACCTGCCTCATGCTCAGCCCCAGGATGCTGGAGTGTACTCGGCCAGGTATATAGGAGGA
AACCTTTCACCTCGGCCTTACCAGGCTGATAGTCCGGAGATGTGAAGCCAGAAGTGGGGACCTGAA
TGCAACCATCTCTGACTGCTTGTATGAACAATGGTGTCTGCCATGAAGATACTGGAGAATGCATTTGC
CCTCTGGGTTTATGGGAAGGACGTGTGAGAAGGCTTGTGAAGTGCACACGTTTGGCAGAAGTGTAAA
GAAAGGTGCAGTGGACAAGAGGGATGCAAGTCTTATGTGTCTGCTCCCTGACCCCTATGGGTGTTC
TGTGCCACAGGCTGGAAGGTCTGCAGTCAATGAAGGCATACCGAGGATGACCCCAAAGATAGTGGAT
TTGCCAGATCATATAGAAGTAAACAGTGGTAAATTTAATCCCATTTGCAAAGCTTCTGGCTGGCCGTA
CCTACTAATGAAGAAATGACCCGGTGAAGCCGATGGGACAGTCTCATCCAAAAGACTTTAACCAT
ACGGATCATTCTCAGTAGCCATATCCACATCCACCGGATCCTCCCCCTGACTCAGGAGTTTGGGTC
TGCAGTGTGAACACAGTGGCTGGGATGGTGGAAAAGCCCTTCAACATTTCTGTTAAAGTTCTTCAAAG
CCCCTGAATGCCCAAACGTGATTGACTGGACATAACTTTGCTGTCAACATCAGCTCTGAGCCT
TACTTTGGGGATGGACCAATCAAATCCAAGAAGCTTCTATACAAACCCGTTAATCACTATGAGGCTTGG
CAACATATTCAAGTGACAAATGAGATTGTTACTCAACTATTTGGAACCTCGGACAGAATGAAGTCT
TGTGTCAACTGGTCCGTCGTGGAGAGGGTGGGAAGGGCATCCTGGACCTGTGAGACGCTTCAACA
GCTTCTATCGGACTCCCTCCAAGAGTCTAAATCTCCTGCCTAAAAGTCAAGCCAGTAAATTTG
ACCTGGCAACCAATATTTCCAAGCTCGGAAGATGACTTTTATGTTGAAGTGGAGAGAAGGTCTGTGCAA
AAAAGTGTACAGCAGAATATTAAGTTCAGGCAACTGACTTCGGTGTACTTAAACAATTACATCCC
AGGGAGCAGTACGTGGTCCGAGCTAGAGTCAACACCAAGGCCAGGGGAATGGAGTGAAGATCTCACT
GCTTGGACCTTAGTGACATTCTCCTCCTCAACCAGAAAACATCAAGATTTCCAACATTACACTCC
TCAGCTGTGATTTCTGGACAATATTGGATGGCTATTCTATTTCTTATTACTATCCGTTACAAGTT
CAAGGCAAGAATGAAGACCAGCACGTTGATGTGAAGATAAAGAATGCCACCATCACTCAGTATCAGCTC
AAGGGCTAGAGCCTGAAACAGCATACCAGGTGGACATTTTGCAGAGAACAACATAGGGTCAAGCAAC
CCAGCCTTTTCTCATGAAGTGGTACCCTCCAGAAATCTCAAGCACCAGCGGACCTCGGAGGGGGAAG
ATGCTGCTTATAGCCATCCTTGGCTCTGCTGGAATGACCTGCCTGACTGTGCTGTTGGCCTTTCTGATC
ATATTGCAATTGAAGAGGGCAAATGTGCAAAGGAGAATGGCCAAAGCCTTCAAAAACAGGGAAGAACA
GCTGTGCAAGTCAACTCAGGACTCTGGCCCTAAACAGGAAGGTCAAAAACAACCCAGATCCTACAATT
TATCCAGTGTGACTGGAATGACATCAAATTTCAAGATGTGATTGGGGAGGGCAATTTTGGCCAAGTT
CTTAAGGCGCGCATCAAGAAGGATGGGTTACGGATGGATGCTGCCATCAAAGAATGAAAGAATATGCC
TCCAAAGATGATCACAGGACTTTGCAGGAACTGGAAGTCTTTGTAACTTGGACACCATCAAAC
ATCATCAATCTTAGGAGCATGTGAACATCGAGGCTACTGTACCTGGCCATTGAGTACGCGCCCAT
GGAAACCTTCTGGACTTCTTCCGAAGAGCCGTGTGCTGGAGACGACCCAGCATTGGCCATTGCCAAT
AGCACCGCTCCACTGTCTCCAGCAGCTCCTTCACTTCGCTGCCGACGTGGCCCGGGCATGGAC
TACTTGAGCCAAAACAGTTTATCCACAGGATCTGGCTGCCAGAAACATTTTAGTTGGTAAAATAT
GTGGCAAAAATAGCAGATTTTGGATTGTCCCGAGGTCAAGAGGTGTATGTGAAAAGACAATGGGAAGG
CTCCAGTGCCTGGATGGCCATCGAGTCACTGAATTACAGTGTGTACACAACCAACAGTGTATGG
TCCTATGGTGTGTTACTATGGGAGATTGTAGCTTAGGAGGCACACCCTACTGCGGGATGACTTGTGCA
GAACTCTACGAGAAGCTGCCCCAGGCTACAGACTGGAGAAGCCCTGAACTGTGATGATGAGGTGTAT
GATCTAATGAGACAATGTGGCGGGAGAAGCCTTATGAGAGGCCATCATTTGCCAGATATTGGTGTCC
TTAAACAGAATGTTAGAGGAGCGAAAGACCTACGTGAATACCACGCTTTATGAGAAGTTACTTATGCA
GGAATTGACTGTTCTGCTGAAGAAGCGGCC
ACGCGTACGCGGCCGCTCGAG – GFP Tag – GTTTAAAC
  
```

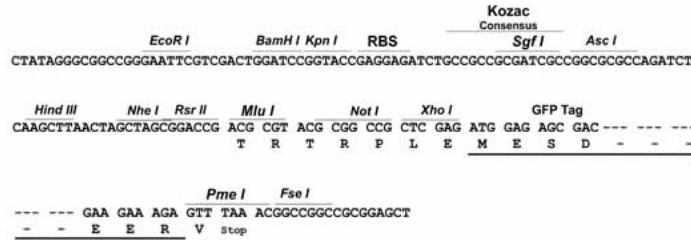
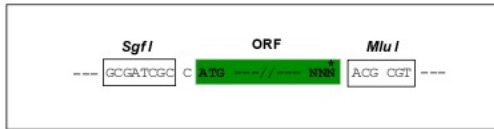
Protein Sequence: >Peptide sequence encoded by RG239844
 Blue=ORF Red=Cloning site Green=Tag(s)

MDSLASLVLCGVSLLLSASFPLATLTMTVDKGDVNVISFKKVLIKEEDAVIYKNGSFIHSVPRHEVPDI
 LEVHLPHAQPDAGVYSARYIGGNLFTSAFTRLIVRCEAQKWGPECNHLCTACMNGVCHEDTGECIC
 PPGFMGRTEKACELHTFGRTCKERCSCGQEGCKSYVFCPLDPYGCSCATGWKGLQCNEGIPRMTPKIVD
 LPDHIEVNSGKFNPICKASGWPLPTNEEMTLVKPDGTVLHPKDFNHTDHFVAIFTIHRILPPDSGVVW
 CSVNTVAGMVEKPFNISVKVLPKPLNAPNVIDTGHNFVINISSEPYFGDGPICKSKLLYKPVNHYEAW
 QHIQVTNEIVTLNYLEPRTEYELCVQLVRRGEGEGHPGVPVRRFTTASIGLPPPRGLNLLPKSQTTLNL
 TWQPIFPSSDDFYVEVERRSVQKSDQQNIKVPGNLTVLLNHLHPREQYVVRARVNTKAQGEWSEDLT
 AWTLSDILPPQENIKISNITHSSAVISWTILDGYSISSITIRYKVGKNEQHVQKIKNATITQYQL
 KGLEPETAYQVDIFAENNIGSSNPAFVSHLVLPESQAPADLGGKMLLIAILGSAGMTCLTVLLAFLI
 ILQLKRANVQRMAQAFQNRREPAVQFNSGTLALNRKVKNNPDPTIYPVLDWNDIKFQDVI GEGNFQV
 LKARIKKDGLRMDAAIKRMKEYASKDDHRDFAGELEVLCKLGHHPNIINLLGACEHRGYLYAIEYAPH
 GNLLDFLRKSRVLETPAFAIANSTASTLSSQQLLHFAADVARGMDYLSQKQFIHRDLAARNILVGENY
 VAKIADFGLSRGQEVYVKTMGRLPVRWMAIESLNYSVYTTNSDVWSYGVLLWEIVSLGGTPYCGMTCA
 ELYEKL PQGYRLEKPLNCDDEVYDLMRQCWREKPYERPSFAQILVSLNRMLEERKTYVNTTLYEKFTYA
 GIDCSAEEAA
 TRTRPLEMESDESGLPAMEIECRITGTLNGVEFELVGGGEGTPEQGRMTNKMSTKGALTFSPYLLSHV
 MGYGFYHFGTYPSTYENPFLHAINNGGYNTRIEKYEDGGVLHVSFSYRYEAGRVIGDFKVMGTGFPED
 SVIFTDKIIRSNATVEHLHPMGDNDLDGSFTRTFSLRDGGYSSVVD SHMHFKSAIHPSILQNGGPMFA
 FRRVEEDHSNTELGIVEYQHAFKTPDADAGEERV

Restriction Sites: SgfI-MluI

Cloning Scheme:

Cloning sites used for ORF Shutting:

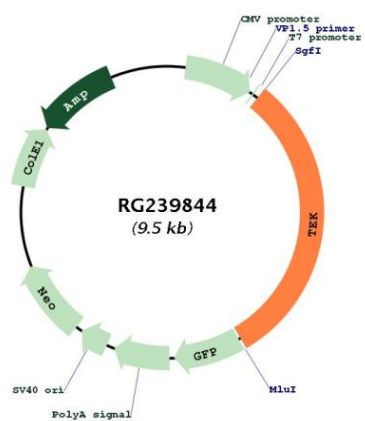


ACCN: NM_001290078

ORF Size: 2928 bp

| | |
|--------------------------|--|
| OTI Disclaimer: | The molecular sequence of this clone aligns with the gene accession number as a point of reference only. However, individual transcript sequences of the same gene can differ through naturally occurring variations (e.g. polymorphisms), each with its own valid existence. This clone is substantially in agreement with the reference, but a complete review of all prevailing variants is recommended prior to use. More info |
| OTI Annotation: | This clone was engineered to express the complete ORF with an expression tag. Expression varies depending on the nature of the gene. |
| Components: | The ORF clone is ion-exchange column purified and shipped in a 2D barcoded Matrix tube containing 10ug of transfection-ready, dried plasmid DNA (reconstitute with 100 ul of water). |
| RefSeq: | NM_001290078.1 , NP_001277007.1 |
| RefSeq Size: | 4343 bp |
| RefSeq ORF: | 2931 bp |
| Locus ID: | 7010 |
| UniProt ID: | Q02763 |
| Cytogenetics: | 9p21.2 |
| Protein Families: | Druggable Genome, ES Cell Differentiation/IPS, Protein Kinase, Transmembrane |
| MW: | 109.6 kDa |
| Gene Summary: | This gene encodes a receptor that belongs to the protein tyrosine kinase Tie2 family. The encoded protein possesses a unique extracellular region that contains two immunoglobulin-like domains, three epidermal growth factor (EGF)-like domains and three fibronectin type III repeats. The ligand angiopoietin-1 binds to this receptor and mediates a signaling pathway that functions in embryonic vascular development. Mutations in this gene are associated with inherited venous malformations of the skin and mucous membranes. Alternative splicing results in multiple transcript variants. Additional alternatively spliced transcript variants of this gene have been described, but their full-length nature is not known. [provided by RefSeq, Feb 2014] |

Product images:



Circular map for RG239844