

Product datasheet for **RG239843**

UBAP2L (NM_001287815) Human Tagged ORF Clone

Product data:

Product Type:	Expression Plasmids
Product Name:	UBAP2L (NM_001287815) Human Tagged ORF Clone
Tag:	TurboGFP
Symbol:	UBAP2L
Synonyms:	NICE-4; NICE4
Mammalian Cell Selection:	Neomycin
Vector:	pCMV6-AC-GFP (PS100010)
E. coli Selection:	Ampicillin (100 ug/mL)



[View online »](#)

ORF Nucleotide Sequence:

>RG239843 representing NM_001287815.
 Blue=ORF Red=Cloning site Green=Tag(s)

```

GCTCGTTTAGTGAACCGTCAGAATTTTGTAAACGACTCACTATAGGGCGGCCGGGAATTCGTGACTG
GATCCGGTACCGAGGAGATCTGCCGCCCGGATCGCC
ATGATGACATCGGTGGGCACTAACCGAGCCCGGGAAACTGGGAACAACCTCAAACCAAACAGACA
CAGCACAAGCAGCGGCCACAGGCCACTGCAGAACAAATTAGACTTGCACAGATGATTTCCGACCATAAT
GATGCTGACTTTGAGGAGAAGGTGAAACAATTGATTGATATTACAGGCAAGAACCAGGATGAATGTGTG
ATTGCTTTGCATGACTGCAATGGAGATGTCAACAGAGCTATCAATGTTCTTCTGGAAGGAAACCCAGAC
ACGCATTCCTGGGAGATGGTCGGGAAGAAGAAGGGAGTCTCAGGCCAGAAGGATGGTGGCCAGACGGAA
TCCAATGAGGAAGGCAAAGAAAAATCGAGACCGGGACAGAGACTATAGTCGGCGACGTGGTGGCCACCA
AGACGGGGGAGAGTTCGAGGTGAGGAAATGGATTGGATGGCACCAAGAGTGGAGGGCTTCTGGAAGA
GGAACAGAAAGAGGCAGAAGGGGCCGTGGCCGAGGCAGAGGTGGCTCTGGTAGGCGAGGAGGAAGTTT
TCTGCTCAAGGAATGGGAACCTTAACCCAGCTGATTATGCAGAGCCAGCCAATACTGATGATAACTAT
GGCAATAGCAGCGCAATACGTGGAACAACACTGGCCACTTTGAACCAGATGATGGGACGAGTGCATGG
AGGACTGCAACAGAGGAGTGGGGGACTGAAGATTGGAATGAAGATCTTTCTGAGACCAAGATCTTACT
GCCTCTAATGTGTCTTCACTGCCTCTGCCTGCGGAGAATGTGACAATCACTGCTGGTCAGAGAATTGAC
CTTGCTGTTCTGCTGGGGAAGACACCATCTACAATGGAGAATGATTCATCTAATCTGGATCCGTCTCAG
GCTCCTTCTCTGGCCAGCCTCTGGTGTTCAGTAATTCGAAGCAGACTGCCATATCACAGCCTGCTTCA
GGGAACACATTTTCTCATCACAGTATGGTGAGCATGTTAGGGAAGGATTTGGTGTGTCGGTGAAGCT
AAAGGCGGCAGTACTACAGGCTCCAGTCTTGGAGCAATTAAGACTGCCAAGCCCTGGCTCAGTTG
GCAGCTCAGCATTCTCAGTCTGGAAGCACCACCCTCCTCTGGGACATGGGCTCGACGACACAATCC
CCATCACTGGTGCAGTATGATTTGAAGAACCAGTATTGAGCAGTGCACAGCCCTTTACAAAGCGC
CAGGCTTTTACCCCATCTTCAACCATGATGGAGGTGTTCTTTCAGGAGAAGTCACTGCAGTGGCTACC
TCCACAGCTGCACCTCCACCTCCGTCTTCTCCTCTGCAAAGCAAATCCACATCGGCTCCACAGATGTCG
CCTGGATCTTCAGACAACCAGTCTCTAGCCCTCAGCCGGCTCAGCAGAAACTGAAACAGCAGAAGAAA
AAAGCCTCCTTGACTTCTAAGATTCCTGCTCTGGCTGTGGAGATGCCTGGCTCAGCAGATATCTCAGGG
CTAAACCTGCAGTTTGGGCATTGCAGTTTGGGTGAGAGCCTGTCCTTTCTGATTATGAGTCCACCCCC
ACCACGAGCGCCTCTTCAAGCCAGGCTCCAAGTAGCCTGTATACCAGCACGGCCAGTGAATCATCTCT
ACAATTTTCATCTAACCAGAGTCAAGGAGTCTGGTTATCAGAGCGGCCCAATTCAGTCGACAACCTATACC
TCCCAAATAATGCTCAGGGCCCTTTTATGAACAGAGATCCACACAGACTCGGGCGTACCCAGCTCC
ATCTCTTCATACCCCAAAGGACTGACTCAGGCAAAGAATGGTTCAGTTCTGTGAGGCCACCGCAG
TTACAGACCACACAATCTGTTGAAGGTGCTACAGGCTCTGCAGTAAAATCTGATTCACCTTCCACTTCT
AGCATCCCCCTCTCAATGAAACGGTATCTGCAGCTTCCTTACTGACGACAACCAATCAGCATTATCC
TCCTTGGGTGGCTTGAGCCACAGTGAGGAGATTCAAAATACTACCACCACACAACACAGCAGCAGTTA
TCTACGCAGCAGAATACCTTTCATCATCAACATCTTCTGGGCGCACTTCGACATCCACTCTTTGCAC
ACAAGTGTGGAGAGTGAGGCGAATCTCCATTCTCCTCCAGCACTTTTCCACCACATCCAGCAGTCT
TCTGCACCTCCCCAGTGGTCACTGTCTCCTCCAGTCTCAATAGTGGCAGTAGCCTGGGCTCAGCCTA
GGCAGCAACTCCACTGTACAGCCTCGACTCGAAGCTCAGTTGCTACGACTTCAGGAAAAGCTCCTCCC
AACCTCCCTCCTGGGGTCCCGCGTGTGGCTAATCCGTATATTATGGCTCCAGGCTGTTACATGCC
TACCCGCCACAAGTATATGGTTATGATGACTTGCAGATGCTTCAGACAAGATTTCCATTGGATTACTAC
AGCATCCCATTTCCACACCCACTACTCCGCTGACTGGGAGGGATGGTAGCCTGGCCAGCAACCCTTAT
TCTGGTGACCTCACAAGTTCGGCCGTGGGGATGCCTCCTCCCCAGCCCCGGCCACAACCTTGGCCCAA
CCCCAACAGAACCAGACGACACTACCATACCACGCAGCAGACATTCTGAACCCGGCGCTGCCTCCT
GGCTACAGTTACACCAGCCTGCCATACTATACAGGGTCCCGGGCTCCCCAGCACCTTCCAGTATGGG
CCTGCTGTGTTCCCTGTGGCTCCTACCTCTTCCAAGCAGCATGGTGTGAATGTCAGTGTGAATGCATCG
GCCACCCCTTTCAAACAGCCGAGTGGATATGGGTCTCATGGATACAACACTGGAAGAAAAATCCACCC
CCTTACAAGCATTCTGGACGGCTGAGAGC
ACGCGTACGCGGCCGCTCGAG - GFP Tag - GTTTAAAC
  
```

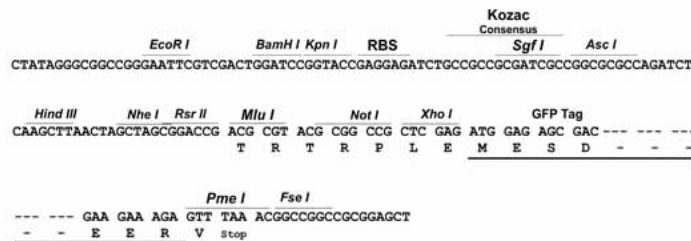
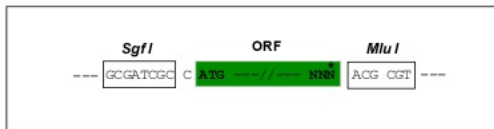
Protein Sequence: >Peptide sequence encoded by RG239843
 Blue=ORF Red=Cloning site Green=Tag(s)

MMTSVGTNRARGNWEQPQNQNTQHKQRPQATAEQIRLAQMI SDHNDADFEKVKQLIDITGKNQDECV
 IALHDCNGDVNRAINVLLEGNPDTHSWEMVGKKKGVSGQKDGQTESNEEGKENRDRDRDY SRRRGGPP
 RRGVRVQENGLDGTKSGGPSGRGTERRRRGRGRGRGSSGRRRGRF SAQMGTFNPADYAEPANTDDNY
 GNSSGNTWNNTGHFEPDDGTSAWRATAEEWGTEDWNEDLSETKIFTASNVS SVPLPAENVITITAGQRID
 LAVLLGKTPSTMENDSSNLDPSQAPSLAQPLVFSNSKQT AISQPASGNTF SHHSMVSM LGKFGDVGEA
 KGGSTTGSQFLEQFKTAQALAAQHSQSGSTTTSSWDMGSTTQSPSLVQYDLKNP SDSAVHSPFTRK
 QAFTPSSTMMEVFLQEKSPA VATSTAAPPPSSPLPSKSTSAPQMSPGSSDNQSSSPQAQK LKQKQK
 KASLTSKIPALAVEMPGSADISGLNLQFGALQFGSEPVLSDYESTPTTSASSSQAPSSLYTSTASESS
 TISSNQSQESGYQSGPIQSTTYTSQNNAQGLYEQRSTQTRRYPSI SSSPQKDLTQAKNGFSSVQATQ
 LQTTQSVEGATGSAVKSDSPSTSSIPPLNETVSAASLLTTTNQHSSSLGGLSHSEEIPNTTTTQHSSTL
 STQNTLSSSTSSGRTSTLLHTSVSEANLHSSSTFTTSSVSAPPVVS VSSSLNSGSSLGLSL
 GSNSTVTA STRSSVATTSGKAPPNLP GPVPLLPNPYIMAPGLLHAYPPQVYGYDDLQMLQTRFPLDYY
 SIPFPTTPTPLTGRDGLASNPYSGDLTKFGRGDASSPAPATTLAQPQQNTQTHTHTTQQTFLNPA LPP
 GYSYTSLPYYTGVPGLPSTFYQGPVFPVAPTSSKQHG VNVSVNASATPFQQPSGYGSHGNTGRKYPP
 PYKHFMTAES
 TRTRPLEMESDESGLPAMEIECRITGTLNGVEFELVGGEGTPEQGRMTNKMSTKGALTFSPYLLSHV
 MGYGFYHFGTYPSGYENPFLHAINNGGYNTRIEKYEDGGVLHVSFSYRYEAGRVIGDFKVMGTGFPED
 SVIFTDKIIRSNATVEHLHPMGDNDLDGSFTRTFSLRDGGYSSVVD SHMHFKSAIHPSILQNGGPMFA
 FRRVEEDHSNTELGIVEYQHAFKTPDADAGEERV

Restriction Sites: Sgfl-MluI

Cloning Scheme:

Cloning sites used for ORF Shutting:

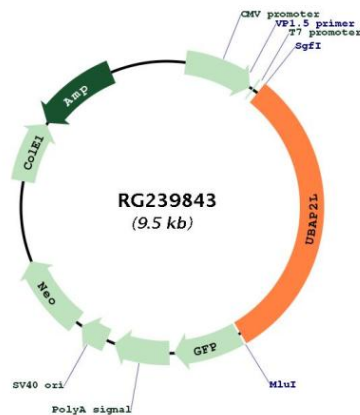


ACCN: NM_001287815

ORF Size: 2928 bp

OTI Disclaimer:	The molecular sequence of this clone aligns with the gene accession number as a point of reference only. However, individual transcript sequences of the same gene can differ through naturally occurring variations (e.g. polymorphisms), each with its own valid existence. This clone is substantially in agreement with the reference, but a complete review of all prevailing variants is recommended prior to use. More info
OTI Annotation:	This clone was engineered to express the complete ORF with an expression tag. Expression varies depending on the nature of the gene.
Components:	The ORF clone is ion-exchange column purified and shipped in a 2D barcoded Matrix tube containing 10ug of transfection-ready, dried plasmid DNA (reconstitute with 100 ul of water).
RefSeq:	NM_001287815.1 , NP_001274744.1
RefSeq Size:	3451 bp
RefSeq ORF:	2931 bp
Locus ID:	9898
UniProt ID:	Q14157
Cytogenetics:	1q21.3
Protein Families:	Druggable Genome
MW:	103.6 kDa
Gene Summary:	Plays an important role in the activity of long-term repopulating hematopoietic stem cells (LT-HSCs).[UniProtKB/Swiss-Prot Function]

Product images:



Circular map for RG239843