

Product datasheet for **RG239841**

SPCA2 (ATP2C2) (NM_001286527) Human Tagged ORF Clone

Product data:

Product Type:	Expression Plasmids
Product Name:	SPCA2 (ATP2C2) (NM_001286527) Human Tagged ORF Clone
Tag:	TurboGFP
Symbol:	SPCA2
Synonyms:	SPCA2
Mammalian Cell Selection:	Neomycin
Vector:	pCMV6-AC-GFP (PS100010)
E. coli Selection:	Ampicillin (100 ug/mL)



[View online »](#)

ORF Nucleotide
Sequence:

>RG239841 representing NM_001286527.
Blue=ORF Red=Cloning site Green=Tag(s)

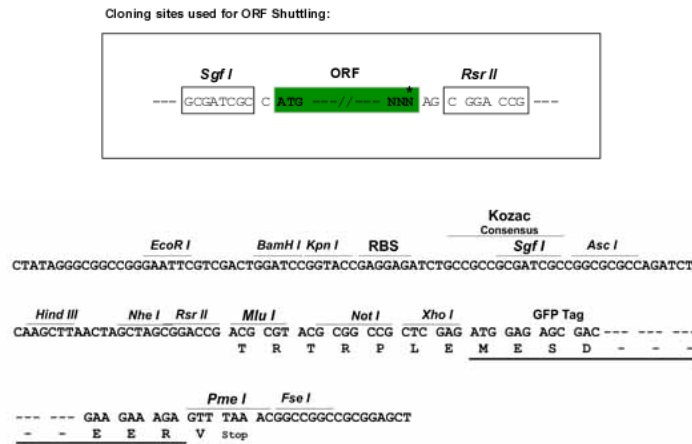
```
GCTCGTTTAGTGAACCGTCAGAATTTTGTAAACGACTCACTATAGGGCGGCCGGGAATTCGTGACTG
GATCCGGTACCGAGGAGATCTGCCGCCCGCATCGCC
ATGGTCGAGGGACGCGTCTCCGAGTTCCTGAAGAACTCGGCTTCTCGGGCGGGGCCGCCAGTACCAG
GCGCTGGAGAAGGACGAAGAGGAAGCCTTGATTGATGAACAGAGTGAGCTGAAAGCCATCGAGAAGAG
AAGAAGGTGACAGCCCTGCCCCCAAGGAAGCGTGCAAATGCCAGAAAGAGGATTTGGCCAGAGCGTTT
TGTGTGGACTTACACACTGGGCTGTCCGAGTTCCTCGGTGACGCAGCGCCGGCTGGCCATGGCTGGAAT
GAGTTTGTGCTGACAACAGCGAACCTGTGTGGAAGAAATACCTGGATCAGTTTAAAGACCCCTGATC
CTGCTGCTGCTGGGCTCTGCCCTGGTGTGCTCCTACCAAGGAGTATGAGGACGCCGTGACGATCGCC
ACGGCAGTGCTTGTGCTGGTCACTGTCCCTTCCAGGAGTACAGGTCGGAGAAATCTCTGGAAGAG
CTGACCAAGCTGGTTCCTCCAGAATGTAAGTGCCTAAGAGAAGGAAAACCTCCAGCACCTGCTTGTGCGA
GAACTGGTTCCTGGTGTGCTGATCTCTCTCGATCGGAGACCGGATCCCTGCAGACATCCGACTCACT
GAGGTCACGGACCTCTTGGTGGATGAATCCAGTTTACCAGGGAAGCCGAGCCATGTAGTAAAACAGAC
AGCCCCCTTGACAGGCGGTGGGGACCTCACACCCTCAGCAACATCGTCTTATGGGGACCCCTGGTGCAG
TATGGGAGGGGCCAGGGGTCTGATTGGAACAGGGGAAAGCTCTCAGTTCGGAGAGTGTAAAGATG
ATGCAGGCTGAAGAGACACCTAAAACCTTTGCGAAAAGCATGGACAGGCTAGGAAAGCAACTGACA
CTCTTCTCCTTTGGCATAATCGGTCTCATGCTCATTGGTGGTGCAGGGAACAACCTCCTGAGT
ATGTTACGATCGGGGTGAGCTGGTGTGGCGGCCATTCAGAGGGTCTGCCATCGTGTGATGGTG
ACGCTGGTCTGGGAGTGTGCGGATGGCAAGAAGCGGGTATCGTGAAGAAGTTACCCATCGTGGAG
ACTTTAGGTTGCTGCAGCGTTCCTGTTCTGACAAGACGGGACTCTGACTGCCAATGAAATGACAGTG
ACCCAGTTGTAACGTCAGATGGGCTTCGTGCCGAGGTCAGCGGAGTTGGGTATGACGTCGAGGAGT
GTGTGCTTCTACCATCCAAGGAAGTCATTAAGGAATTTTCCAATGTCTCAGTGGGAAAGTTAGTGGAG
GCGGGCTGTGTTGCCAACAATGCGGTCTCAGAAAAGAACGCCGTGATGGGGCAGCCACCAGGGTGA
TTGATGGCCCTGGCGATGAAGATGGACTTAAGTATATAAAAAATTCATATATAAGAAAAAAGAGATT
CCATTCAGTTCAGAGCAGAAGTGGATGGCGGTGAAATGCAGTCTGAAGACTGAGGATCAGGAAGACATT
TACTTCATGAAAGGGGCTTGGAAAGAGGTGATCCGCTACTGCACCATGTACAACAACGGGGCATCCCC
CTGCCGCTGACGCCCCAGCAGAGGTCTTCTGCCTGCAGGAAGAGAAGAGGATGGGGTGTGCTGGTTG
CGGGTGTGCCCCTGGCTTCTGGGCCGAGCTGGGGCGGCTGACGTTTCTCGGTCTGTGGGCATCATT
GACCCCCGAGAGTTGGCGTGAAGGAAGCAGTCCAGGTTCTCTCCGAGTCTGGTGTGCTGTGAAGATG
ATAACGGGGGATGCCCTGGAGACGGCCTTGCCATAGGAAGAAACATCGGCCTGTGCAACGGGAAGCTG
CAAGCCATGTCCGGGGAGGAGGTGGACAGCGTGGAGAAGGGCGAGCTGGCCGACCGCGTGGGGAAGGTG
TCCGTGTTCTTACAGACCAGCCAAAGCACAAGCTCAAAATCATCAAGGCTCTGCAGGAGTCAAGGGCG
ATCGTGGCCATGACTGGGGATGGGGTGAACGACGAGTGGCCCTGAAAGTCTGCAGACATTGGGATCGCC
ATGGGGCAGACAGGGACGGACGTGAGCAAGAGGCCGCCAACATGATCCTGGTGGATGATGACTTCTCA
GCCATCATGAATGCAGTGGAGGAAGGCAAGGGTATTTTTTACAACATCAAAAACCTTTGTCGATTCCAG
CTGAGCACGAGCATCTCCGCCCTGAGTCTCATCACTCTGTCCACCGTGTCAACCTGCCAGCCCCCTC
AACGCCATGCAGATCCTATGGATCAACATCATCATGGATGGGCCACCGGCAGAGGAGTCCCAGAAA
ACTGAAGTGTGTTGCACTGCAGTGAGACTGGGAGTAGAAGGCAGAGGAGAAAGTACCTGGCCGGCAGA
GCTGGCTTGGGGGTAGAGCCCGTTGACAAGACGCCCTTACGGCAGCCACCACGGAGTGTGCGGGACACC
ATCCTCAGCAGAGCCCTCATCCTGAAGATCCTCATGTCCGCGGCCATCATCATCAGCGGGACCCCTTTT
ATCTTCTGGAAGGAGATGCCTGAAGACAGAGCAAGCACTCCCCGACCCACGACGATGACGTTCACTTGT
TTTGTGTTTTTCGATCTCTTCAACGCCTTGACCTGCCGCTCTCAGACCAAGCTGATATTTGAGATCGGC
TTTCTCAGGAACCATGTTCTCTACTCCGCTCTGGGGTCCATCCTGGGGCAGCTGGCGGTCAATTTAC
ATCCCCCGCTGCAGAGGGTCTTCCAGACGGAGAACCTGGGAGCGCTTGATTTGCTGTTTTAACTGGA
TTGGCCTCATCCGTCTTCAATTTGTGAGAGCTCCTCAAATATGTAAAAATACTGTTGCAGCCCCAAG
AGAGTCCAGATGCACCCTGAAGATGTG
AGCGGACCGACGCGTACGCGGCCCTCGAG - GFP Tag - GTTTAAAC
```

Protein Sequence: >Peptide sequence encoded by RG239841
 Blue=ORF Red=Cloning site Green=Tag(s)

MVEGRVSEFLKKLGFSGGGRQYQALEKDEEEALIDEQSELKAIIEKVKVTALPPKEACKCQKEDLARAF
 CVDLHTGLSEFSVTQRRLAHGWNFVADNSEPVWKKYLDQFKNPLILLLLGSALVSVLTKEYEDAVSIA
 TAVLVVVTVAFIQEYRSEKSLLEELTKLVPPECNCLREGKLOHLLARELVPGDVVLSIGDRIPADIRLT
 EVTDLLVDESSFTGEAEPCSKTDSPLTGGGDLTTLNIVFMGTLVQYGRGQGVVIGTGESSQFGEVFKM
 MQAEETPKTLPKQSMDRLGKQLTLFSFGIIGLIMLIGWSQGKQLLSMFTIGVSLAVAAIPEGLPIVVMV
 TLVLGVLрмаккRVIvKKLPIVETLGCCSVLCSDKTGTLTANEMVTQLVTSDLGRAEVSGVYDGGQT
 VCLLPSKEVIKEFSNVSVGKLVEAGCVANNAVIRKNAVGMQPTGALMALAMKMDLSDIKNSYIRKKEI
 PFSSEQKWMVAVKSLKTEDQEDIYFMKGALIEVIRYCTMYNNGGIPLPLTPQQRSFCLQEEKRMGSLGL
 RVLALASGPELGRLTFLGLVGIIDPPRVGVKEAVQVLESVSVKMITGDALETALAIGRNIGLCNGKL
 QAMSGEEVDSVEKGELADRVGVSVFFRTSPKHKLKIIKALQESGAIAMTGDGVNDAVALKSADIGIA
 MGQTGTDVSKEAANMILVDDDFSAIMNAVEEGKGFYNIKNFVRFQLSTSISALSLITLSTVFNLPSP
 NAMQILWINIIMDGPPAQRSSQKTEVCCTAVRLGVEGRGESTWAGRAGLVPEVDKDAFRQPPRSVRDT
 ILSRALILKILMSAAIIISGTLFIWFKEMPEDRASTPRTTMTFTCFVFDLFNALTCRSQTKLIFEIG
 FLRNHMFLYSVLGSILGQLAVIYIPPLQRVFTENL GALDLLFLTGLASSVFI LSELLKLCEKYCCSPK
 RVQMHPEDV
 SGPTRTRPLEMESDESGLPAMEIECRITGTLNGVEFELVGGGEGTPEQGRMTNKMKSTKGALTFSPYLL
 SHVMGYGFYHFGTYPSPGYENPFLHAINNGGYTNTRIEKYEDGGVLHVFSFSYRYEAGRVIGDFKVMGTGF
 PEDSVIFTDKIIIRSNATVEHLHPMGDNDLDGSFTRTFSLRDGGYSSVVD SHMHFKSAIHPSILQNGGP
 MFAFRRVEEDHSNTELGIVEYQHAFKTPDADAGEERV

Restriction Sites: SgfI-RsrII

Cloning Scheme:

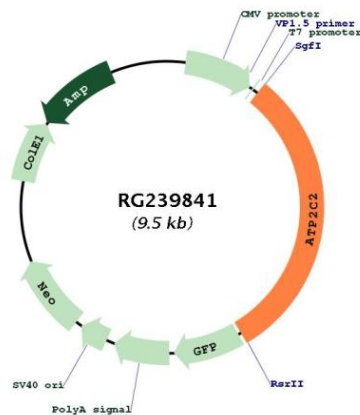


ACCN: NM_001286527

ORF Size: 2925 bp

OTI Disclaimer:	The molecular sequence of this clone aligns with the gene accession number as a point of reference only. However, individual transcript sequences of the same gene can differ through naturally occurring variations (e.g. polymorphisms), each with its own valid existence. This clone is substantially in agreement with the reference, but a complete review of all prevailing variants is recommended prior to use. More info
OTI Annotation:	This clone was engineered to express the complete ORF with an expression tag. Expression varies depending on the nature of the gene.
Components:	The ORF clone is ion-exchange column purified and shipped in a 2D barcoded Matrix tube containing 10ug of transfection-ready, dried plasmid DNA (reconstitute with 100 ul of water).
RefSeq:	NM_001286527.2 , NP_001273456.2
RefSeq Size:	3494 bp
RefSeq ORF:	2928 bp
Locus ID:	9914
UniProt ID:	O75185
Cytogenetics:	16q24.1
Protein Families:	Druggable Genome, Transmembrane
MW:	106.7 kDa
Gene Summary:	This magnesium-dependent enzyme catalyzes the hydrolysis of ATP coupled with the transport of calcium.[UniProtKB/Swiss-Prot Function]

Product images:



Circular map for RG239841