

Product datasheet for **RG239839**

NLRX1 (NM_001282144) Human Tagged ORF Clone

Product data:

Product Type:	Expression Plasmids
Product Name:	NLRX1 (NM_001282144) Human Tagged ORF Clone
Tag:	TurboGFP
Symbol:	NLRX1
Synonyms:	CLR11.3; DLNB26; NOD5; NOD9; NOD26
Mammalian Cell Selection:	Neomycin
Vector:	pCMV6-AC-GFP (PS100010)
E. coli Selection:	Ampicillin (100 ug/mL)



[View online »](#)

ORF Nucleotide Sequence:

>RG239839 representing NM_001282144.
 Blue=ORF Red=Cloning site Green=Tag(s)

```

GCTCGTTTAGTGAACCGTCAGAATTTTGTAAACGACTCACTATAGGGCGGCCGGGAATTCGTGACTG
GATCCGGTACCGAGGAGATCTGCCGCCACGATCGCC
ATGAGGTGGGGCCACCATTGCCCAGGGCCTCTGGGGCTCTGGTTTTAGAAGAGCACTCCAGCGACCA
GATGATCGTATCCCCTTCTGTATCCACTGGAGTTGGCCCTTCAAGGGGAGCGTCCCTTTGGCCCTT
AGGGCCTTTATACGCCACCACGGAAGCTCGGTAGATAGCGCTCCCCACCGGGAGGCATGGACGGCTG
TTCCCCAGCGCCTCTGCAACTGAAGCTATACAGCGGCACCGCGGAACCTGGCTGAGTGGTTCAGCCGG
CTGCCAGGGAGGAGCGCAGTTTGGCCCAACCTTTGCCCTAGACACGGTCCACGTTGACCTGTGATC
CGCGAGAGTACCCTGATGAGCTACTTCGCCACCCGCGGAGCTGGCCCTGGAGCATCAGCCACCCAG
GCCGGCTCCCCCACTGGCCTTGTCTCAGCTCTTAAACCCGGATGCCTGTGGGCGCCGGTGCAGACA
GTGGTGTGTATGGACAGTGGGCACAGGAAGAGCACGCTGGTGCGAAGATGGTCTGGACTGGTGT
TATGGGCGGTGCCGGCCTTCGAGCTGCTCATCCCCTTCTCTGTGAGGACCTGCATCCCTGGCCCT
GCCCCAGCTCCCTGTGCCAACTTGTGGCCAGCGCTACACGCCCTGAAGGAGTTCTGCCCTGATG
GCTGTGTGCTGGTCCCACCTCCTTTGTGCTCCAATGGCTTAGAGCATCTCAACCTCGACTTCCGGCTG
GCAGGCACGGGACTTTGTAGTGACCCGGAGGAACCGCAGGAACAGCTGTATCATCGTCAACCTGCTG
CGCAAATACATGCTGCCTCAGGCCAGCATTCTGGTGACCACTCGGCCCTCTGCCATTGGCCGATCCCC
AGCAAGTACGTGGGCCGCTATGGTGAGATCTGCGGTTTCTCTGATACCAACTGCAGAAGCTCTACTTC
CAGCTCCGCCTCAACCAGCCGACTGCGGGTATGCCGTTGGCGGTTCCAGTGTCTCTGCCACACCAGCT
CAGCGTGACCACCTGGTGAGATGCTCTCCCGAACCTGGAGGGGACCACCAGATAGCCGCTGCCTGC
TTCTGCCGCTCCTATTGCTGGCTCGTTTGTGCCACCTTGCACTTCTGCTGCCCCACGGCTGCTGGG
CAGACCTTACAAGCATCTATACCAGCTTCTCGCCCTCAACTCAGCGGGGAAACCTTGACAGCACT
GACCCCTCCAATTTGTCCCTGATGGCCTATGCAGCCCGAACCATGGGAAGTTGGCCTATGAGGGGGTG
TCTCCCGCAAGACCTACTTCTCTGAAGAGGATGTCTGTGGCTGCCTGGAGGCTGGCATCAGGACGGAG
GAGGAGTTTCAGCTGCTGCACATCTTCCGTGCGGATGCCCTGAGGTTTTTCTGGCCCCATGTGTGGAG
CCAGGGCGTGCAGGCACCTTCGTGTTACCGTGCCCGCCATGCAGGAATACCTGGCTGCCCTCTACATT
GTGCTGGGTTTGCGAAGACGACCTGCAAAAGGTGGCAAGGAAGTGGCTGAGCTCGTGGGCCGTGTT
GGGAGGACGTCAGCCTGGTACTGGGCATCATGGCCAAGCTGCTGCCTCTCGGGCTCTGCCTCTGCTC
TTCAACCTGATCAAGTGGTTCACGAGTGTGGGCGCATGGTGGTAAAAGCCGGGAGGCGGTGGCT
CAGGCCATGGTGTGGAGATGTTTCGAGAGGAGGACTACTACAACGATGATGTTCTGGACCAGATGGGC
GCCAGTATCCTGGGCGTGGAGGGCCCCGGCGCCACCCAGATGAGCCCCCTGAGGATGAAGTCTTCGAG
CTTTCCCATGTTTCATGGGGGGCTTCTCTCTGCCACAACCGAGCTGTGCTAGCTCAGCTTGGCTGC
CCCATCAAGAACCTGGATGCCCTGGAGAATGCCAGGCCATCAAGAAGAAGCTGGGAAGCTGGGCCGG
CAGGTGCTGCCCCATCAGAGCTCCTTGACCACCTCTTCTTCCACTATGAGTTCAGAACCAGCGCTTC
TCCGCTGAGGTGCTCAGCTCCCTGCGTCAGCTCAACCTGGCAGGTGTGCGCATGACACCAGTCAAGTGC
ACAGTGGTGGCAGCTGTGCTGGCAGCGGAAGGCATGCCCTGGATGAGGTGAACCTGGCCCTCTGCCAG
CTAGATCTGCTGGGCTGCGCACACTCTGCCTGTCTTCTGCGTGCCCGGAAGCTGGGCTTGAACCTC
AACAGCTGGGCCCTGAGGCCTGCAAGGACCTCCGAGACCTGTTGCTGCATGACCAGTGCCAAATTACC
ACACTGCGGCTGTCCAACAACCCGCTGACGGCGGCAGGTGTTGCCGTGCTAATGGAGGGGCTGGCAGGA
AACACCTCAGTGACGCACCTGTCCCTGCTGCACACGGGCTTGGGGACGAAGGCCTGGAGCTGCTGGCT
GCCAGCTGGACCGCAACCGGCAGCTGCAGGAGCTGAACGTGGCGTACAACGGTGTGGTGCACAGCG
GCCCTGGCCCTGGCCAGAGCTGCCCGGAGCACCTTCCCTGGAAGTGTACACCTCTACTTCAATGAG
CTGAGCTCAGAGGGCCGCCAGGTCTTGCAGACTTGGGGGTGCTGCTGAAGGTGGTGGCCGGTGGTG
GTGCTACTGACAGAGGGGACGGCGGTGTCAGAATACTGGTCAGTATCCTCAGTGAAGTCCAGCGGAAC
CTCAATAGCTGGGATCGGGCCGGTTCAGCGACACCTTGAGCTCCTACTGCGGGATCTGGAAGATAGC
CGGGTGCCACCCTTAATCCTTGGCGCAAGGCCAGCTGTGCGAGTGGAGGGCGAGGTCAGGGCCCTC
CTGGAGCAGCTGGGAAGCTCTGGAAGC
ACGCGTACGCGGCCGCTCGAG - GFP Tag - GTTTAAAC
  
```

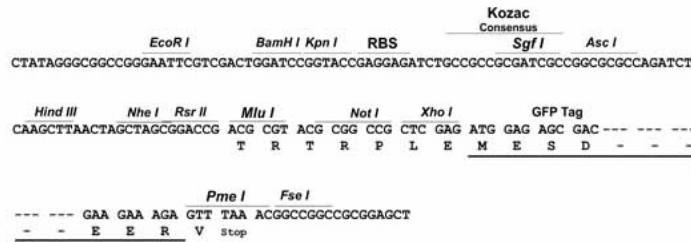
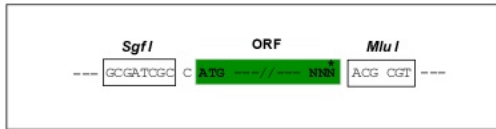
Protein Sequence: >Peptide sequence encoded by RG239839
 Blue=ORF Red=Cloning site Green=Tag(s)

MRWGHHLPRASWGSFRRALQRPDDRIPFLIHWSWPLQGERPFPPRAFIRHHGSSVDSAPPPGRHGRL
 FPSASATEAIQRHRRNLAEFWSRLPREERQFGPTFALDTHVDPVIRESTPDELLRPPAELALEHQPPQ
 AGLPPLALSQLFNPDACGRRVQTVVLYGTGTGKSTLVRKMLDWCYGRLLPAFELLIPFSCEDLSSLGP
 APASLCQLVAQRYTPLKEVLPMAAAGSHLLFVLHGLEHLNDFRLAGTGLCSDPEEPQEPAAIIVNLL
 RKYMLPQASILVTRPSAIGRIPSKYVGRYGEICGFSDTNLQKLYFQLRLNQPYCGYAVGGSGVSATPA
 QRDHLVQMLSRNLEGGHQIAAACFLPSYCWLVCATLHFLHAPTPAGQTLTSIYTSFLRLNFSGETLDST
 DPSNLSLMAYAARTMGKLAYEGVSSRKYTFSEEDVCGCLEAGIRTEEEFQLLHIFRRDALRFFLAPCVE
 PGRAGTFVFTVPAMQEYLAALYIVLGLRKTTLQKVGKEVAELVGRVGEDVSLVLGIMAKLLPLRALPLL
 FNLIKVPRVFRMVGKSREAVAQAMVLEMFREEDYNDVDLQMGASILGVEGPRRHPEPEPEDEVFE
 LFPFMGGLLSAHNRAVLAQLGCPKIKNLDALENAQAIIKKLGLGRQVLPSELLDHLFFHYEFQNRQF
 SAEVLSLRLQNLNLAGVRMTPVKCTVVAAVLGSGRHALDEVNLASCQLDPAGLRLLPVFLRARKLGLQL
 NSLGPEACKDLRDLLLHDQCQITLRLSNNPLTAAGVAVLMEGLAGNTSVTHLSLLHTGLGDEGLELLA
 AQLDRNRQLQELNVAYNGAGDTAALALARAAREHPSLELLHLYFNELSSEGRQVLRDLGGAAEGGARVV
 VSLTEGTAVSEYWSVILSEVQRNLSWDRARVQRHLELLLRDLEDSTRGATLNPWRKAQLLRVEGEVRAL
 LEQLGSSGS
 TRTRPLEMESDESGLPAMEIECRITGTLNGVEFELVGGEGTPEQGRMTNKMSTKGALTFSPYLLSHV
 MGYGFYHFGTYPSGYENPFLHAINNGGYNTRIEKYEDGGVLHVSFSYRYEAGRVIGDFKVMGTGFPED
 SVIFTDKIIRSNATVEHLHPMGDNDLDGSFTRTFSLRDGGYSSVVDSSHMHFKSAIHPSILQNGGPMFA
 FRRVEEDHSNTELGIVEYQHAFKTPDADAGEERV

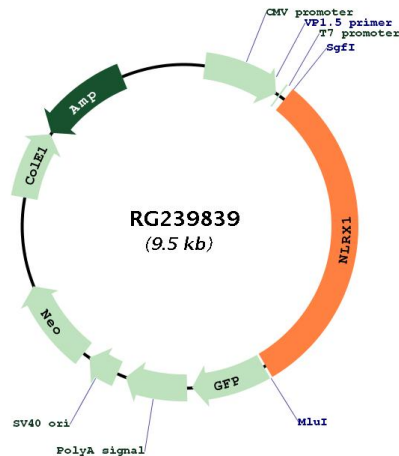
Restriction Sites: Sgfl-MluI

Cloning Scheme:

Cloning sites used for ORF Shutting:



Plasmid Map:



ACCN: NM_001282144

ORF Size: 2925 bp

OTI Disclaimer: The molecular sequence of this clone aligns with the gene accession number as a point of reference only. However, individual transcript sequences of the same gene can differ through naturally occurring variations (e.g. polymorphisms), each with its own valid existence. This clone is substantially in agreement with the reference, but a complete review of all prevailing variants is recommended prior to use. [More info](#)

OTI Annotation: This clone was engineered to express the complete ORF with an expression tag. Expression varies depending on the nature of the gene.

Components: The ORF clone is ion-exchange column purified and shipped in a 2D barcoded Matrix tube containing 10ug of transfection-ready, dried plasmid DNA (reconstitute with 100 ul of water).

RefSeq: [NM_001282144.2](#)

RefSeq Size: 4158 bp

RefSeq ORF: 2928 bp

Locus ID: 79671

UniProt ID: [Q86UT6](#)

Cytogenetics: 11q23.3

Protein Pathways: RIG-I-like receptor signaling pathway

MW: 107.6 kDa

Gene Summary: The protein encoded by this gene is a member of the NLR family and localizes to the outer mitochondrial membrane. The encoded protein is a regulator of mitochondrial antiviral responses. Three transcript variants encoding the same protein have been found for this gene. [provided by RefSeq, Aug 2013]