

## Product datasheet for **RG239838**

### **NLRX1 (NM\_001282143) Human Tagged ORF Clone**

#### **Product data:**

Product Type:	Expression Plasmids
Product Name:	NLRX1 (NM_001282143) Human Tagged ORF Clone
Tag:	TurboGFP
Symbol:	NLRX1
Synonyms:	CLR11.3; DLNB26; NOD5; NOD9; NOD26
Mammalian Cell Selection:	Neomycin
Vector:	pCMV6-AC-GFP (PS100010)
E. coli Selection:	Ampicillin (100 ug/mL)



[View online »](#)

**ORF Nucleotide Sequence:**

>RG239838 representing NM\_001282143.  
 Blue=ORF Red=Cloning site Green=Tag(s)

```

GCTCGTTTAGTGAACCGTCAGAATTTTGTAAACGACTCACTATAGGGCGGCCGGGAATTCGTGACTG
GATCCGGTACCGAGGAGATCTGCCGCCACGATCGCC
ATGAGGTGGGGCCACCATTGCCCAGGGCCTCTGGGGCTCTGGTTTTAGAAGAGCACTCCAGCGACCA
GATGATCGTATCCCCTTCTCTGATCCACTGGAGTTGGCCCTTCAAGGGGAGCGTCCCTTTGGCCCTT
AGGGCCTTTATACGCCACCACGGAAGCTCGGTAGATAGCGCTCCCCACCGGGAGGCATGGACGGCTG
TTCCCCAGCGCCTCTGCAACTGAAGCTATACAGCGGCACCGCGGAACCTGGCTGAGTGGTTCAGCCGG
CTGCCAGGGAGGAGCGCAGTTTGGCCCAACCTTTGCCCTAGACACGGTCCACGTTGACCTGTGATC
CGCGAGAGTACCCTGATGAGCTACTTCGCCACCCGCGGAGCTGGCCCTGGAGCATCAGCCACCCAG
GCCGGCTCCCCCACTGGCCTTGTCTCAGCTCTTAAACCCGGATGCCTGTGGGCGCCGGTGCAGACA
GTGGTGTGTATGGACAGTGGCACAGGAAGAGCACGCTGGTGCGAAGATGGTCTGGACTGGTGT
TATGGGCGGTGCCGGCCTTCGAGCTGCTCATCCCCTTCTCTGTGAGGACCTGCATCCCTGGGCCCT
GCCCCAGCTCCCTGTGCCAACTTGTGGCCAGCGCTACACGCCCTGAAGGAGTTCTGCCCTGATG
GCTGTGTCTGGTCCCACCTCCTTTGTGCTCCATGGCTTAGAGCATCTCAACCTCGACTTCCGGCTG
GCAGGCACGGGACTTTGTAGTGACCCGGAGGAACCGCAGGAACAGCTGTATCATCGTCAACCTGCTG
CGCAAATACATGCTGCCTCAGGCCAGCATTCTGGTGACCACTCGGCCCTCTGCCATTGGCCGATCCCC
AGCAAGTACGTGGGCCGCTATGGTGAGATCTGCGGTTTCTCTGATACCAACTGCAGAAGCTCTACTTC
CAGCTCCGCCTCAACCAGCCGACTGCGGGTATGCCGTTGGCGGTTCAAGTGTCTCTGCCACACCAGCT
CAGCGTGACCACCTGGTGAGATGCTCTCCCGAACCTGGAGGGGACCACCAGATAGCCGCTGCCTGC
TTCTGCCGCTCCTATTGCTGGCTCGTTTGTGCCACCTTGCACTTCTGCTGCCCCACCGCTGCTGGG
CAGACCTTACAAGCATCTATACCAGCTTCTCGCCCTCAACTCAGCGGGGAAACCTGGACAGCACT
GACCCCTCCAATTTGTCCCTGATGGCCTATGCAGCCCGAACCATGGGAAGTTGGCCTATGAGGGGGTG
TCTCCCGCAAGACCTACTTCTCTGAAGAGGATGTCTGTGGCTGCCTGGAGGCTGGCATCAGGACGGAG
GAGGAGTTTCAGCTGCTGCACATCTTCCGTGGGATGCCCTGAGGTTTTTCTGGCCCCATGTGTGGAG
CCAGGGCGTGCAGGCACCTTCGTGTTACCGTGCCCGCCATGCAGGAATACCTGGCTGCCCTCTACATT
GTGCTGGGTTTGCGAAGACGACCTGCAAAAGTGGCAAGGAAGTGGCTGAGCTCGTGGGCCGTGTT
GGGAGGACGTCAGCCTGGTACTGGGCATCATGGCCAAGCTGCTGCCTCTCGGGCTCTGCCTCTGCTC
TTCAACCTGATCAAGTGGTTCACGAGTGTGGGCGCATGGTGGTAAAAGCCGGGAGGCGGTGGCT
CAGGCCATGGTGTGGAGATGTTTCGAGAGGAGGACTACTACAACGATGATGTTCTGGACCAGATGGC
GCCAGTATCCTGGGCGTGGAGGGCCCCGGCGCCACCCAGATGAGCCCCCTGAGGATGAAGTCTTCGAG
CTTTCCCATGTTTCATGGGGGGCTTCTCTCTGCCACAACCGAGCTGTGCTAGCTCAGCTTGGCTGC
CCCATCAAGAACCTGGATGCCCTGGAGAATGCCAGGCCATCAAGAAGAAGCTGGGAAGCTGGGCCGG
CAGGTGCTGCCCCATCAGAGCTCCTTGACCACCTCTTCTTCCACTATGAGTTCAGAACCAGCGCTTC
TCCGCTGAGGTGCTCAGCTCCCTGCGTCAGCTCAACCTGGCAGGTGTGCGCATGACACCAGTCAAGTGC
ACAGTGGTGGCAGCTGTGCTGGCAGCGGAAGGCATGCCCTGGATGAGGTGAACCTGGCCCTGCCAG
CTAGATCTGCTGGGCTGCGCACACTCTGCCTGTCTTCTGCGTGCCCGGAAGCTGGGCTTGAACCTC
AACAGCTGGGCCCTGAGGCCTGCAAGGACCTCCGAGACCTGTTGCTGCATGACCAGTGCCAAATTACC
ACACTGCGGCTGTCCAACAACCCGCTGACGGCGGCAGGTGTTGCCGTGCTAATGGAGGGGCTGGCAGGA
AACACCTCAGTGACGCACCTGTCCCTGCTGCACACGGGCTTGGGGACGAAGGCCTGGAGCTGCTGGCT
GCCAGCTGGACCGCAACCGGCAGCTGCAGGAGCTGAACGTGGCGTACAACGGTGTGGTACACAGCG
GCCCTGGCCCTGGCCAGAGCTGCCCGGAGCACCTTCCCTGGAACCTGCTACACCTCTACTTCAATGAG
CTGAGCTCAGAGGGCCGCCAGGTCTTGCAGACTTGGGGGTGCTGCTGAAGGTGGTCCCGGGTGGTG
GTGCTACTGACAGAGGGGACGGCGGTGTCAGAATACTGGTCAGTATCCTCAGTGAAGTCCAGCGGAAC
CTCAATAGCTGGGATCGGGCCGGTTCAGCGACACCTTGAGCTCCTACTGCGGGATCTGGAAGATAGC
CGGGTGCCACCCTTAATCCTTGGCGCAAGGCCAGCTGCTGCGAGTGGAGGGCGAGGTCAGGGCCCTC
CTGGAGCAGCTGGGAAGCTCTGGAAGC
ACGCGTACGCGGCCGCTCGAG - GFP Tag - GTTTAAAC
  
```

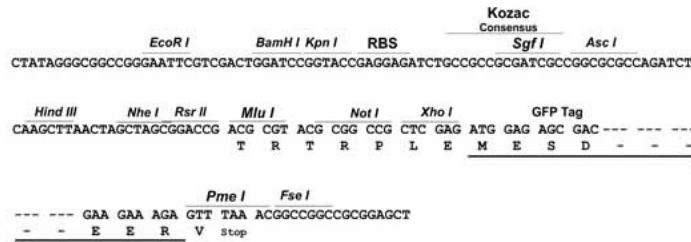
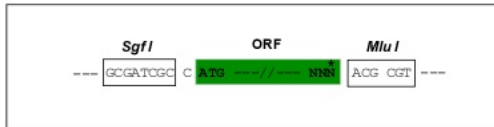
Protein Sequence: >Peptide sequence encoded by RG239838  
 Blue=ORF Red=Cloning site Green=Tag(s)

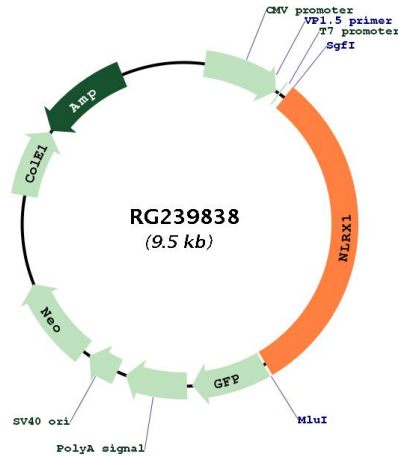
MRWGHHLPRASWGSFRRALQRPDDRIPFLIHWSWPLQGERPFGPPRAFIRHHGSSVDSAPPPGRHGRL  
 FPSASATEAIQRHRRNLAEFWSRLPREERQFGPTFALDTHVDPVIRESTPDELLRPPAELALEHQPPQ  
 AGLPPLALSQLFNPDACGRRVQTVVLYGTGTGKSTLVRKMLDWCYGRLLPAFELLIPFSCEDLSSLGP  
 APASLCQLVAQRYTPLKEVLPMAAAGSHLLFVLHGLEHLNDFRLAGTGLCSDPEEPQEPAAIIVNLL  
 RKYMLPQASILVTRPSAIGRIPSKYVGRYGEICGFSDTNLQKLYFQLRLNQPYCGYAVGGSGVSATPA  
 QRDHLVQMLSRNLEGGHQIAAACFLPSYCWLVCATLHFLHAPTPAGQTLTSIYTSFLRLNFSGETLDST  
 DPSNLSLMAYAARTMGKLAYEGVSSRKYFSEEDVCGCLEAGIRTEEEFQLLHIFRRDALRFFLAPCVE  
 PGRAGTFVFTVPAMQEYLAALYIVLGLRKTTLQKVGKEVAELVGRVGEDVSLVLGIMAKLLPLRALPLL  
 FNLIKVVPRVFGRMVGSREAVAQAMVLEMFREEDYNDVDLQMGASILGVEGPRRHPEPEPEDEVFE  
 LFPFMGGLLSAHNRAVLAQLGCPKIKNLDAENAQAIIKKLGLGRQVLPSELLDHLFFHYEFQNRQF  
 SAEVLSLRLQNLAGVRMTPVKCTVVAAVLGSGRHALDEVNLASCQLDPAGLRLLPVFLRARKLGLQL  
 NSLGPEACKDLRDLLLHDQCQITLRLSNNPLTAAGVAVLMEGLAGNTSVTHLSLLHTGLGDEGLELLA  
 AQLDRNRQLQELNVAYNGAGDTAALALARAAREHPSLELLHLYFNELSSEGRQVLRDLGGAAEGGARVV  
 VSLTEGTAVSEYWSVILSEVQRNLSWDRARVQRHLELLLRDLEDSRGATLNPWRKAQLLRVEGEVRAL  
 LEQLGSSGS  
 TRTRPLEMESDESGLPAMEIECRITGTLNGVEFELVGGEGTPEQGRMTNKMSTKGALTFSPYLLSHV  
 MGYGFYHFGTYPSGYENPFLHAINNGGYNTRIEKYEDGGVLHVSFSYRYEAGRVIGDFKVMGTGFPED  
 SVIFTDKIIRSNATVEHLHPMGDNDLDGSFTRTFSLRDGGYSSVVDSSHMHFKSAIHPSILQNGGPMFA  
 FRRVEEDHSNTELGIVEYQHAFKTPDADAGEERV

Restriction Sites: SgfI-MluI

Cloning Scheme:

Cloning sites used for ORF Shutting:



**Plasmid Map:**


- ACCN:** NM\_001282143
- ORF Size:** 2925 bp
- OTI Disclaimer:** The molecular sequence of this clone aligns with the gene accession number as a point of reference only. However, individual transcript sequences of the same gene can differ through naturally occurring variations (e.g. polymorphisms), each with its own valid existence. This clone is substantially in agreement with the reference, but a complete review of all prevailing variants is recommended prior to use. [More info](#)
- OTI Annotation:** This clone was engineered to express the complete ORF with an expression tag. Expression varies depending on the nature of the gene.
- Components:** The ORF clone is ion-exchange column purified and shipped in a 2D barcoded Matrix tube containing 10ug of transfection-ready, dried plasmid DNA (reconstitute with 100 ul of water).
- RefSeq:** [NM\\_001282143.2](#)
- RefSeq Size:** 3750 bp
- RefSeq ORF:** 2928 bp
- Locus ID:** 79671
- UniProt ID:** [Q86UT6](#)
- Cytogenetics:** 11q23.3
- Protein Pathways:** RIG-I-like receptor signaling pathway
- MW:** 107.6 kDa
- Gene Summary:** The protein encoded by this gene is a member of the NLR family and localizes to the outer mitochondrial membrane. The encoded protein is a regulator of mitochondrial antiviral responses. Three transcript variants encoding the same protein have been found for this gene. [provided by RefSeq, Aug 2013]