

Product datasheet for **RG239836**

MCSF Receptor (CSF1R) (NM_001288705) Human Tagged ORF Clone

Product data:

Product Type:	Expression Plasmids
Product Name:	MCSF Receptor (CSF1R) (NM_001288705) Human Tagged ORF Clone
Tag:	TurboGFP
Symbol:	MCSF Receptor
Synonyms:	BANDDOS; C-FMS; CD115; CSF-1R; CSFR; FIM2; FMS; HDLS; M-CSF-R
Mammalian Cell Selection:	Neomycin
Vector:	pCMV6-AC-GFP (PS100010)
E. coli Selection:	Ampicillin (100 ug/mL)



[View online »](#)

ORF Nucleotide Sequence:

>RG239836 representing NM_001288705.
 Blue=ORF Red=Cloning site Green=Tag(s)

```

GCTCGTTAGTGAACCGTCAGAATTTTGTAAACGACTCACTATAGGGCGGCCGGGAATTCGTCGACTG
GATCCGGTACCGAGGAGATCTGCCGCCACGATCGCC
ATGGGCCAGGAGTTCTGCTGCTCTGCTGGTGGCCACAGCTTGGCATGGTCAGGGAATCCCAGTGATA
GAGCCCAGTGTCCCTGAGCTGGTGAAGCCAGGAGCAACGGTGACCTTGCATGTGTGGCAATGGC
AGCGTGAATGGGATGGCCCCCATCACCTCACTGGACCCTGTACTCTGATGGCTCCAGCAGCATCCTC
AGCACCAACAACGCTACCTTCCAAAACAGGGGACCTATCGCTGCACTGAGCCTGGAGACCCCTGGGA
GGCAGCGCCGCCATCCACCTCTATGTCAAAGACCTGCCCGCCCTGGAACGTGTAGCACAGGAGGTG
GTCGTGTTGAGGACCAGGACGCACTACTGCCCTGTCTGCTCACAGACCCGGTGTGGAAGCAGGCGTC
TCGCTGGTGGTGTGGTGGCCGCCCTCATGCGCCACACCAACTACTCCTTCTCGCCCTGGCATGGC
TTCACCATCCACAGGGCAAGTTCATTAGAGCCAGGACTATCAATGCAGTGCCTGATGGGTGGCAGG
AAGGTGATGTCCATCAGCATCCGGCTGAAAGTGCAGAAAGTCATCCAGGGCCCCAGCCTTGACACTG
GTCCCTGCAGAGCTGGTGGGATTCGAGGGGAGGCTGCCAGATCGTGTGCTCAGCCAGCAGCGTTGAT
GTTAACTTTGATGCTTCTCCAAACACAACAACCAAGCTCGCAATCCCTCAACAACTGACTTTCAT
AATAACCGTTACAAAAAGTCCCTGACCCTCAACCTCGATCAAGTAGATTTCAACATGCCGGCAACTAC
TCTGCGTGGCCAGCAACGTGCAGGGCAAGCACTCCACCTCCATGTTCTTCCGGGTGGTAGAGAGTGCC
TACTTGAACCTGAGCTCTGAGCAGAACCTCATCCAGGAGGTGACCGTGGGGGAGGGGCTCAACCTCAA
GTCATGGTGGAGGCTACCCAGGCTGCAAGTTTTAACTGGACCTACCTGGGACCTTTTCTGACCAC
CAGCCTGAGCCCAAGCTTGCTAATGCTACCACCAAGGACACATACAGGCACACCTTACCCTCTCTG
CCCCGCTGAAGCCCTCTGAGGCTGGCCGCTACTCCTTCTGGCCAGAAACCAGGAGGCTGAGAGCT
CTGACGTTTGGCTCACCTTCGATACCCCCAGAGGTAAGCGTCATATGGACATTCATCAACGGCTCT
GGCACCCCTTTGTGTGCTGCCTCTGGGTACCCCCAGCCCAACGTGACATGGCTGCAGTGGCCAC
ACTGATAGGTGTGATGAGGCCAAGTGCTGCAAGTCTGGGATGACCCATACCCTGAGGCTCTGAGCCAG
GAGCCCTTCCACAAGGTGACGGTGCAGAGCCTGCTGACTGTTGAGACCTTAGAGCACAACCAAACCTAC
GAGTGCAGGGCCACAACAGCGTGGGAGTGGCTCCTGGGCTTCATACCCATCTCTGCAGGAGCCAC
ACGCATCCCCGGATGAGTTCCTCTTACACCAGTGGTGGTGCCTGCATGTCCATCATGGCCTTGCTG
CTGCTGCTCTCTGCTGCTATTGTACAAGTATAAGCAGAAGCCCAAGTACCAGTCCGCTGGAAGATC
ATCGAGAGCTATGAGGGCAACAGTTATACTTTTCATCGACCCACGCAGCTGCCTTACAACGAGAAGTGG
GAGTTCCCCCGGAACAACCTGCAGTTTGGTAAGACCCTCGGAGCTGGAGCCTTTGGGAAGTGGTGGAG
GCCACGGCCTTTGGTCTGGGCAAGGAGGATGCTGTCTGAAGGTGGCTGTGAAGATGCTGAAGTCCACG
GCCCATGCTGATGAGAAGGAGGCCCTCATGTCCGAGCTGAAGATCATGAGCCACCTGGGCCAGCAGGAG
AACATCGTCAACCTTCTGGGAGCCTGTACCCATGGAGGCCCTGTACTGGTCATCACGGAGTACTGTTGC
TATGGCGACCTGCTCAACTTTCTGCGAAGGAAGGCTGAGGCCATGCTGGGACCCAGCCTGAGCCCCGGC
CAGGACCCCGAGGGAGGCGTCACTATAAGAACATCCACCTCGAGAAGAAATATGTCCGACGGGACAGT
GGCTTCTCCAGCCAGGGTGTGGACACCTATGTGGAGATGAGGCCCTGTCTCCACTTCTTCAAATGACTCC
TTCTCTGAGCAAGACCTGGACAAGGAGGATGGACGGCCCTGGAGCTCCGGGACCTGCTTCACTTCTCC
AGCCAAGTAGCCAGGGCATGGCCTTCTCGCTTCCAAGAATTGCATCCACCGGGAGCTGGCAGCGCGT
AACGTGCTGTTGACCAATGGTCATGTGGCCAAGATTGGGGACTTCGGGCTGGCTAGGGACATCATGAAT
GACTCCAATACTATTGTCAAGGGCAATGCCCGCTGCCTGTGAAGTGGATGGCCCCAGAGAGCATCTTT
GACTGTGTCTACACGGTTCAGAGCGACGCTGGTCTATGGCATCCTCCTCTGGGAGATCTTCTCACTT
GGGCTGAATCCCTACCCTGGCATCCTGGTGAACAGCAAGTTCTATAAACTGGTGAAGGATGGATACCAA
ATGGCCCAGCCTGCATTTGCCCAAAGAATATATACGCATCATGCAGGCCTGCTGGCCTTGGAGCCC
ACCCACAGACCCACCTTCCAGCAGATCTGCTCCTTCTCAGGAGCAGGCCCAAGAGGACAGGAGAGAG
CGGACTATAACCAATCTGCCGAGCAGCAGAGAAGCGGTGGCAGCGGCAGCAGCAGCAGTGGAGCTGGAG
GAGGAGAGCTCTAGTGGACACTGACTGCTGCGAGCAAGGGGATATCGCCAGCCCTTGTGACGCC
AACAACTATCAGTTCTGC
ACGCGTACGCGGCCGCTCGAG - GFP Tag - GTTTAAAC
  
```

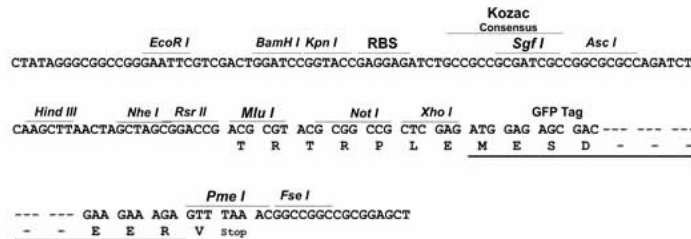
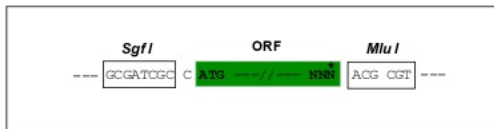
Protein Sequence: >Peptide sequence encoded by RG239836
 Blue=ORF Red=Cloning site Green=Tag(s)

MGPGVLLLLLVATAWHGQGIPVIEPSVPELVVKGATVTLRCVGNQSVVEWDGPPSPHWLTYSDGSSSIL
 STNNATFQNTGT YRCTEPGDPLGGSAAIHLVYKDPARPWNVLAQEVVVFEDQDALLPCLL TDPVLEAGV
 SLVVRVGRPLMRHTNYSFSPWHGFTIHRAKFIQSQDYQCSALMGRKVMISIRLKVQKVIPGPPALTL
 VPAELVRIRGEAAQIVCSASSVDVNFDFVLQHNNTKLAIPQQSDFHNNRYQKVLTLNLDQVDFQHAGNY
 SCVASNVQGHSTSMFFRVVESAYLNLSSQNLIQEVTVGEGLNLKVMVEAYPGLQGFNWTYLGPFSDH
 QPEPKLANATTKDYRHTFTLSLPRPKPSEAGRYSFLARNPGGWRALTFELTLRYPEVSVIWTFIGNS
 GTLLCAASGYPQPNVTWLQCSGHTDRCDEAQLVQWDDPYPEVLSQEPFHKVTVQSLLTVETLEHNQTY
 ECRAHNSVSGSWAFIPISAGAHTHPDEFLLTPVIVACMSIMALLLLLLLLLLLKYKQPKYQVRWKI
 IESYEGNSYTFIDPTQLPYNEKWEFPRNQLQFGKTLGAGAFGKVEATAFGLGKEDAVLKVAVKMLKST
 AHADKEALMSELKIMSHLQHENIVNLLGACTHGGPVLVITEYCCYGDLLNFLRRKAEAMLGPSLSPG
 QDPEGGVDYKNIHLEKKYVRRDSGFSSQGVDTYVEMRPVSTSSNDSFSEQDLKDGRPLELRDLLHFS
 SQVAQGM AFLASKNCIHRDVAARNVLLTNGHVAKIGDFGLARDIMNDSNYIVKGNARLPVKWMAPEISF
 DCVYTVQSDVWSYGILLWEIFSLGLNPYPGILVNSKFYKLVKDG YQMAQPAFAPKNIYSIMQACWALEP
 THRPTFQQICSF LQEQAQEDRRERDYTNLPSSRSRSGSGSSSELEEESSSEHLTCCEQGDIAQPLLQP
 NNYQFC
 TRTRPLEMESDESGLPAMEIECRITGTLNGVEFELVGGGEGTPEQGRMTNKMSTKGALTFSPYLLSHV
 MGYGFYHFGTYP SGYENPFLHAINNGGYNTRIEKYEDGGVLHVSFSYRYEAGRVIGDFKVMGTGFPED
 SVIFTDKIIRSNATVEHLHPMGDNDLDGSFTRTFSLRDGGYSSVVD SHMHFKSAIHP SILQNGGPMFA
 FRRVEEDHSNTELGIVEYQHAFKTPDADAGEERV

Restriction Sites: SgfI-MluI

Cloning Scheme:

Cloning sites used for ORF Shutting:

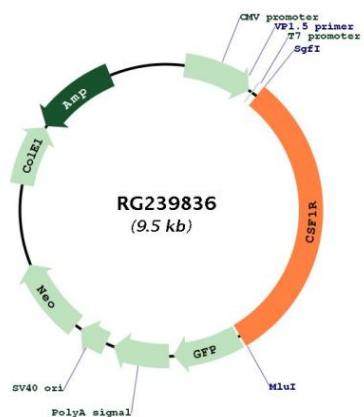


ACCN: NM_001288705

ORF Size: 2916 bp

OTI Disclaimer:	The molecular sequence of this clone aligns with the gene accession number as a point of reference only. However, individual transcript sequences of the same gene can differ through naturally occurring variations (e.g. polymorphisms), each with its own valid existence. This clone is substantially in agreement with the reference, but a complete review of all prevailing variants is recommended prior to use. More info
OTI Annotation:	This clone was engineered to express the complete ORF with an expression tag. Expression varies depending on the nature of the gene.
Components:	The ORF clone is ion-exchange column purified and shipped in a 2D barcoded Matrix tube containing 10ug of transfection-ready, dried plasmid DNA (reconstitute with 100 ul of water).
RefSeq:	NM_001288705.3
RefSeq Size:	3923 bp
RefSeq ORF:	2919 bp
Locus ID:	1436
UniProt ID:	P07333
Cytogenetics:	5q32
Protein Families:	Druggable Genome, Protein Kinase, Transmembrane
Protein Pathways:	Cytokine-cytokine receptor interaction, Endocytosis, Hematopoietic cell lineage, Pathways in cancer
MW:	108.4 kDa
Gene Summary:	The protein encoded by this gene is the receptor for colony stimulating factor 1, a cytokine which controls the production, differentiation, and function of macrophages. This receptor mediates most if not all of the biological effects of this cytokine. Ligand binding activates the receptor kinase through a process of oligomerization and transphosphorylation. The encoded protein is a tyrosine kinase transmembrane receptor and member of the CSF1/PDGF receptor family of tyrosine-protein kinases. Mutations in this gene have been associated with a predisposition to myeloid malignancy. The first intron of this gene contains a transcriptionally inactive ribosomal protein L7 processed pseudogene oriented in the opposite direction. Alternative splicing results in multiple transcript variants. Expression of a splice variant from an LTR promoter has been found in Hodgkin lymphoma (HL), HL cell lines and anaplastic large cell lymphoma. [provided by RefSeq, Mar 2017]

Product images:



Circular map for RG239836