

## Product datasheet for **RG239834**

### Hephaestin (HEPH) (NM\_001282141) Human Tagged ORF Clone

#### Product data:

Product Type:	Expression Plasmids
Product Name:	Hephaestin (HEPH) (NM_001282141) Human Tagged ORF Clone
Tag:	TurboGFP
Symbol:	Hephaestin
Synonyms:	CPL
Mammalian Cell Selection:	Neomycin
Vector:	pCMV6-AC-GFP (PS100010)
E. coli Selection:	Ampicillin (100 ug/mL)



[View online »](#)

**ORF Nucleotide Sequence:**

>RG239834 representing NM\_001282141.  
 Blue=ORF Red=Cloning site Green=Tag(s)

```

GCTCGTTTAGTGAACCGTCAGAATTTTGTAAACGACTCACTATAGGGCGGCCGGGAATTCGTGACTG
GATCCGGTACCGAGGAGATCTGCCGCCACGATCGCC
ATGTGGCCATGGAGTCAGGCCACTCCTCTGGCTCTGCTGTTTCATGCAGTCCCTGTGGCCTCACTG
ACTGATGGAGCCACTCGAGTCTACTACCTGGGCATCCGGGATGTGCAGTGGAACTATGCTCCCAAGGA
AGAAATGTCATCACGAACCAGCCTCTGGACAGTGACATAGTGGCTTCCAGCTTCTTAAAGTCTGACAAG
AACCGGATAGGGGGAACCTACAAGAAGACCATCTATAAAGAATACAAGGATGACTCATACACAGATGAA
GTGGCCAGCCTGCCTGGTTGGGCTTCTGGGCCAGTGTGCAGGCTGAAGTGGGGGATGTCATTCTT
ATTCACCTGAAGAATTTTCCACTCGTCCCTATACCATCCACCCTCATGGTGTCTTCTACGAGAAGGAC
TCTGAAGTTCCCTATACCCAGATGGCTCCTCTGGGCCACTGAAAGCTGATGACTCTGTTCCCCCGGG
GGCAGCCATATCTACAACCTGGACCATTCCAGAAGGCCATGCACCCACCGATGCTGACCCAGCGTGCCTC
ACCTGGATCTACCATTCTCATGTAGATGCTCCACGAGACATTGCAACTGGCCTAATTGGGCTCTCATC
ACCTGTAAAAGAGGAGCCCTGGATGGGAACTCCCTCCTCAACGCCAGGATGTAGACCATGATTTCTTC
CTCCTCTTCAGTGTGGTAGATGAGAACCCTCAGCTGGCATCTCAATGAGAACATTGCCACTTACTGCTCA
GATCCTGCTTCAGTGGACAAAGAAGATGAGACATTTTCAGGAGAGCAATAGGATGCATGCAATCAATGGC
TTTGTTTTGGGAATTTACCTGAGCTGAACATGTGTGCACAGAAACGTGTGGCCTGGCACTTGTGGC
ATGGGCAATGAAATTTGATGTCCACACAGCATTTTCCATGGACAGATGCTGACTACCCGTGGACACCAC
ACTGATGTGGCTAACATCTTCCAGCCACTTTGTGACTGCTGAGATGGTGCCTGGGAACCTGGTACC
TGGTTAATTAGCTGCCAAGTGAACAGTCACTTTCGAGATGGCATGCAGGCACTCTACAAGGTCAAGTCT
TGCTCCATGGCCCTCCTGTGGACCTGCTCACAGGCAAAGTTCGACAGTACTTTCATTGAGGCCATGAG
ATTCAATGGGACTATGGCCCGATGGGGCATGATGGGAGTACTGGGAAGAATTTGAGAGAGCCAGGCAGT
ATCTCAGATAAGTTTTTCCAGAAGAGCTCCAGCCGAATGGGGGCACTTACTGGAAGTGGCAGATGAA
GCCTTTCAAGATGAGACATTTCCAAGAGAAGATGCATTTGGAGGAAGATAGGCATCTTGAATCCTGGGG
CCAGTGCATCCGGGCTGAGGTGGGTGACACCATTAGGTGGTCTTCTACAACCGTGCCTCCAGCCATTC
AGCATGCAGCCCATGGGTCTTTTATGAGAAAGACTATGAAGGCACTGTGTACAATGATGGGACATTT
GAGATTTATTGCCAGGCAGGCAGCCATCGAGAAGCAGGGATGAGGGCAATCTATAATGTCTCCAGTGT
CCTGGCCACCAAGCCACCCTCGCCAACGCTACCAAGCTGCAAGAATCTACTATATCATGGCAGAAGAA
GTAGAGTGGGACTATTGCCCTGACCGGAGCTGGGAACGGGAATGGCACAACCACTGAGAAAGGACAGT
TATGGTTACATTTTCTGAGCAACAAGGATGGGCTCCTGGTTCAGATACAAGAAGCTGTATTCAGG
GAATACACTGATGGTACATTAGGATCCCTCGGCCAAGGACTGGACCAGAAGAACAATGGGAATCTTG
GGTCCACTTATCAAAGGTGAAGTTGGTGATATCCTGACTGTGGTATTCAAGAATAATGCCAGCCGCCCC
TACTCTGTGCATGCTCATGGAGTGTAGAACTACTACTGTCTGGCCACTGGCTGCTGAGCCTGGTGGAG
GTGGTCACTTATCAGTGGAAATCCAGAGAGGCTGGCCCTGGGCCCAATGACTCTGCTTGTGTTCC
TGGATCTATTATCTGCAGTGGATCCCATCAAGGACATGTATAGTGGCCTGGTGGGGCCCTTGGCTATC
TGCCAAAAGGGCATCCTGGAGCCCCATGGAGGACGGAGTGACATGGATCGGGAATTTGCATTGTTGTTT
TTGATTTTTGATGAAAAAAGTCTTGGTATTTGGAGGAAAATGTGGCAACCCATGGGTCCAGGATCCA
GGCAGTATTAACCTACAGGATGAAACTTCTTGGAGAGCAATAAAATGCATGCAATCAATGGGAAACTC
TATGCCAACCTTAGGGTCTTACCATGTACCAAGGAGAACGAGTGGCCTGGTACATGCTGGCCATGGGC
CAAGATGTGGATCTACACACCATCCACTTTCATGCAGAGAGCTTCTCTATCGGAATGGCGAGAACTAC
CGGGCAGATGTGGTGGATCTGTTCCAGGGACTTTTGGAGTGTGGAGATGGTGGCCAGCAACCCTGGG
ACATGGCTGATGCACTGCCATGTGACTGACCATGTCCATGCTGGCATGGAGACCCCTTCACTGTTTTT
TCTCGAACAGAACTTAAGCCCTCTACCGTCAACCAAGAGACTGAAAAAGCAGTGCCCCCAGAG
GACATTGAAGAAGGCAATGTGAAGATGCTGGGCATGCAGATCCCCATAAAGAATGTTGAGATGCTGGCC
TCTGTTTTGGTTGCCATTAGTGTACCCCTTCTGCTCGTTGTTCTGGCTCTTGGTGGAGTGGTTTGGTAC
CAACATCGACAGAGAAAGCTACGACGCAATAGGAGGTCCATCCTGGATGACAGCTTCAAGCTTCTGTCT
TTCAAACAG
ACCGCTACGCGGCCGCTCGAG - GFP Tag - GTTTAAAC
  
```

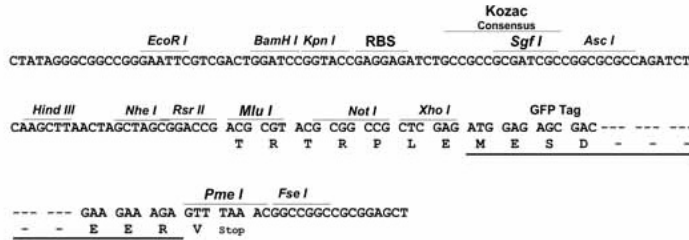
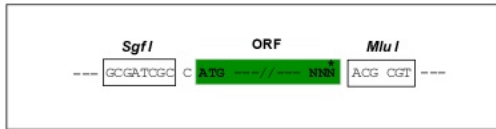
Protein Sequence: >Peptide sequence encoded by RG239834  
 Blue=ORF Red=Cloning site Green=Tag(s)

MWAMESGHLWALLFMQSLWPQLTDGATRVYYLGIKRDVQWNYAPKGRNVI TNQPLDSDIVASSFLKSDK  
 NRIGGTYYKTIYKEYKDDSYTDEVAQPAWLGFLGPVLAQEVGDVIL IHLKNFATRPYTIHPHGVFYEKD  
 SEGSLYDGGSSGPLKADDSVPPGGSHIYNWTIPEGHAPTDADPACLTWIYHSHVDAPRDIATGLIGPLI  
 TCKRGALDGNSPQRQDVHDHDFLLF SVVDENLSWHLNENIATYCDPASVDKEDETFQESNRMHAING  
 FVFGNLPENMCAQKRVAWHLFGMGNEIDVHTAFFHGQMLTTRGHHTDVANIFPATFVTAEMVPWEPGT  
 WLI SCQVNSHFRDGMQALYKVKSCSMAPPVDLLTGKVRQYFIEAHEIQWDYGPMGHDGSTGKNLREPGS  
 ISDKFFQKSSSRIGGTYWKVRYEAFQDETFQEKMHLEEDRHLGILGPVIRAQEVGDIQVVFYNRASQPF  
 SMQPHGVFYEKDYEGTVYNDGTFEIYCQAGSHREAGMRAIYNVSQCPGHQATPRQRYQAARIYYIMAE  
 VEWDYCPDRSWERWHNQSEKDSYGYIFLSNKDGLLSRYKKA VFREYTDGTFRIPRPTGPEEHLGIL  
 GPLIKGEVDILTVVFKNNASRPYSVHAHGVLESTTVWPLAAEPGEVVTYQWNIPERSGPGPND SACVS  
 WIYSAVDPIKDMYSGLVGPLAICQKGI LEPHGRSDMDREFALLFLIFDENKSWYLEENVATHGSQDP  
 GSINLQDETFLESNMHAINGKLYANLRGLTMYQGERVAWYMLAMQDVLHTIHFHAE SFLYRNGENY  
 RADVVDLFPGTFEVEMVASNPGTWLMHCHVTDHVHAGMETLFTVFSRTEHLSPLTVITKETEKAVPPR  
 DIEEGNKMLGMQIPIKNVEMLASVLVAISVTL LLLVVLALGGVVYQHRQRKLRRNRRSILDDSFKLLS  
 FKQ  
 TRTRPLEMESDESGLPAMEIECRITGTLNGVEFELVGGEGTPEQGRMTNKMSTKGALTFSPYLLSHV  
 MGYGFYHFGTYPSGYENPFLHAINNGGYNTRIEKYEDGGVLHVSFSYRYEAGRVIGDFKVMGTGFPED  
 SVIFTDKIIRSNATVEHLHPMGDNDLDGSFTRTFSLRDGGYSSVVD SHMHFKSAIHPSILQNGGPMFA  
 FRRVEEDHSNTELGIVEYQHAFKTPDADAGEERV

Restriction Sites: Sgfl-MluI

Cloning Scheme:

Cloning sites used for ORF Shutting:

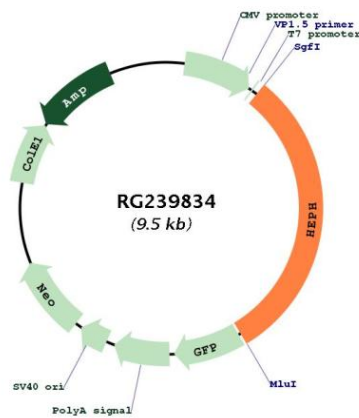


ACCN: NM\_001282141

ORF Size: 2907 bp

<b>OTI Disclaimer:</b>	The molecular sequence of this clone aligns with the gene accession number as a point of reference only. However, individual transcript sequences of the same gene can differ through naturally occurring variations (e.g. polymorphisms), each with its own valid existence. This clone is substantially in agreement with the reference, but a complete review of all prevailing variants is recommended prior to use. <a href="#">More info</a>
<b>OTI Annotation:</b>	This clone was engineered to express the complete ORF with an expression tag. Expression varies depending on the nature of the gene.
<b>Components:</b>	The ORF clone is ion-exchange column purified and shipped in a 2D barcoded Matrix tube containing 10ug of transfection-ready, dried plasmid DNA (reconstitute with 100 ul of water).
<b>RefSeq:</b>	<a href="#">NM_001282141.2</a>
<b>RefSeq Size:</b>	3888 bp
<b>RefSeq ORF:</b>	2901 bp
<b>Locus ID:</b>	9843
<b>UniProt ID:</b>	<a href="#">Q9BQS7</a>
<b>Cytogenetics:</b>	Xq12
<b>Protein Families:</b>	Druggable Genome, Transmembrane
<b>MW:</b>	110.2 kDa
<b>Gene Summary:</b>	This gene encodes a member of the multicopper oxidase protein family. The encoded protein is involved in the transport of dietary iron from epithelial cells of the intestinal lumen into the circulatory system, and may be involved in copper transport and homeostasis. In mouse, defects in this gene can lead to severe microcytic anemia. Alternative splicing results in multiple transcript variants. [provided by RefSeq, Aug 2013]

### Product images:



Circular map for RG239834