

Product datasheet for **RG239833**

ARMC5 (NM_001301820) Human Tagged ORF Clone

Product data:

Product Type:	Expression Plasmids
Product Name:	ARMC5 (NM_001301820) Human Tagged ORF Clone
Tag:	TurboGFP
Symbol:	ARMC5
Synonyms:	AIMAH2
Mammalian Cell Selection:	Neomycin
Vector:	pCMV6-AC-GFP (PS100010)
E. coli Selection:	Ampicillin (100 ug/mL)



[View online »](#)

ORF Nucleotide Sequence:

>RG239833 representing NM_001301820.
 Blue=ORF Red=Cloning site Green=Tag(s)

```

GCTCGTTTAGTGAACCGTCAGAATTTTGTAAACGACTCACTATAGGGCGGCCGGGAATTCGTGACTG
GATCCGGTACCGAGGAGATCTGCCGCCCGCATCGCC
ATGCACCGCCCGCACGTCCCAGGATGCGCTGCGATTAAGTTCCGCTCCCTGGGATCAGCGCGGAGAAGC
GGGGCGGAGTCTGAGGCCGAGCCAAGATGGCGGCTGCGAAGCCAACCCACGACTCGCTCTCGTTT
TGCTCGCGCAGCTCGCGCGGCCGGCGGGAGGCTCTGGGTGGGAAAAGGACCCAGCGACCAACGAG
ACACCCCTGAGCCGCGGCTCCTAGCCCTCCGACCGCCACATCAAGGACGCGGGGAATCGAGCGC
TTCCGGGCACGCGCGGGCTCCGCCCTACTCGCGTGTACGGCGAGCGGCTGACGCGGGTTCCGCC
CCGTCCCAGGCAGGCCCGGCTCCGCCCTCGTCGGCCGCTCGGGAGCTTCTAGCCCCGCCCGCG
TCGGGCCCGCCCTCCGCTGTGTCTGTCTAGTCTACGCCCCAGTGCCTGCGCAAGACGCTG
GACTTGGCGCTCAGCATCTAGCCGATTGCTGTACGGAAGGGGCTGCCGACCGAAGTGCAGACTC
GGAGGCATACTCCCTTTGGTACCATTCTCAGTGCATGAAGACAGACAGCATCCAGAACCGAACGGCC
CGTGCCCTGGGAACTTAGCCATGGAACCTGAGAGCTGTGGGACATCCACTGTGCTGGTGTGTTCC
CTGCTTGTGGAGAGCCTGACAGCCTGCCAGGACTCGCAGTGCCTACAGAGCGTGGTGCCTCCGT
AACCTGGCAGACTCACCCAGCACCCGCTGGCCTTGGCACAGCAGGGAGCAGTGCCTCCGCTGGCCGAG
CTCCTGGCCACTGCCCCAGATGCTGCACTGACCTTAGCCCTCGTCCGTGCCCTCCTGAACTCAGCCGA
GGCTGCTCCCGGGCTGTGCTGAGCAGTAAGTCTGGGTGGGGATTGGGCCACTCGTCAGCCTGGCT
TCCCACCCAAGCGGGCAGTACGCGAGGGAACCTTGTATCCTCGCAACCTGTGTGCCAGGGCCTG
ATTCGGCTGCACTGGGCAATGCTGGTGGCGTGGAGGTGCTGGTAGATGAGTCCGGCAGCGCCGGAT
CCTAATGGAGTAGCCAACTCCAGCAGCCCTGGTGGGGCTGTGTGCCTCTATGCTGTGAGGCC
ATCAACCGGGCCGACTCGGGATGCTGGTGGCTTGGATCTACTGATGGGCTGCTGCGGACCCCTG
GCAAGCGCATGGCACCCCTCGTATTGTGGCTGCCCTTGTGGGTTTCTGTATGACACTGGGGCCCTGGGC
CGGCTGACAGGCTCTGGGACTTGTGCCTCTCCTGGCTGGGCAGCTGTGTGGTGAAGGCTGGTGAAGGAA
GAAGAGGGAAGAGAAGCTGCTTCTGGGACTTCTGAGGAGAGGACCCCTGAGCGGGCACAGGGTGA
AGCTTCCGGAGCCTCAGGTCTGGTGTATCTCCGAGGGCTATGCCACAGGCCCTGATGACATCTCCCC
GACTGGTCTCCTGAGCAGTGTCCGCCGAGCCATGGAGCCGGCCAGCCCGCCCGACCCGACCTCG
CTGCGGGCACCACGCACCAACGCACTCCGGGCCGAGCCCGCCGCCCATCGAGGAGCCTTGGGGA
CGGAAGGGCCAGCCCTGCTGCTGTGTGCGCTTTTCCAGGCCCTGACCAAGTGGGCACTGTG
ACCGGCCCGGCGTGTACGGCCTGCTGACCTATGTGACCGCGCACCGGGCCCGCCAGCCACGTGCA
CTGCGCATTCTGTACGCCTCACCTGCAACCTGCCTGCCTCGAGGCCTTCGTGCGCAGCTATGGCGCG
GCGCTGCTGCGGGCTGGCTGGTGTGGGGTGGCGCCTGACGATTGGCCGGCACACGTGCCCGGCC
ACTCTCCACAGCCGGCACCGAGAGCTGGGGGAGAGGCTACTGCAGAACCTGACGGTTACGGCTGAGTCG
CCCTTTGGGGTTGGGGCCCTGACGCACCTGCTGCTCTTGGGAGCCCTGAGGACCGAGTGGCCTGCGCG
CTGACCCCTGCCCTTATCTGCCGAAGCCCTCTGTGGCGCCGGCTGCTTGGAGCAGGGTGGTCTC
CGGCTCCTCTTGGCGGCTGACCCGGCCGGCCACACCCGCTTCTCTTCTTTGCCGCGACTCC
CTTCTGCTCCAAGACTGGTGTCTCCACTGTGAGCCAGCTGTCCACAGGCAGTCCCACAGGAGTCC
CTAGACTCACCTTCCCCTTGCCTTATGAACCTGCTGGGCCAGCCCTGTCCAGTCCCAGCTCCGACCTG
CACTTCTGTGACTCAGGCCCTCCAGCTCCCTGCCAGCGAGCGGCTCAGCCACCGCCTCCCTTTC
TTCCGGGCCCTGCTGTCAGGAGCTTTCAGAAAGCCAGATGGACCTGGTGCCTTGCAGGCTGTGCG
CCTGGTGCAGCCTGGCCTGTCTGCATATTTGCATGGTTGTGGGGGTGTGGGGCTGCCCTGGGGCC
GTGCCCCACAGGCCAGCCCTGCTGGTTTCAGAGGCCGAGGAGGCACTGGAGGCTGCTGGCCGTTTC
CTACTGCCTGGGCTGGAGGAGGAGCTGGAAGAGGCGTGGGCCGATCCACTGGGACCCAGGGTGGC
CCGGAGTCAGTGGGTGAGGTGTTCCGCTGGGCCGGCCCGGCTGGTGGCCACTGTGCCGCTGGACA
CTGGGGTCAGAGCAGTCCCAGGAAGCGGGTCTGGCCCTGGTGGGGCTTGTGGAGGCAGCAGGTGAA
GAGGCAGGGCCCTGACGGAGGCTTGTGGCTGTGGTATGGGATTGAGTTGGGGCAAGGGTCCCT
GCC
ACGCGTACGCGGCCGCTCGAG – GFP Tag – GTTTAAAC
  
```

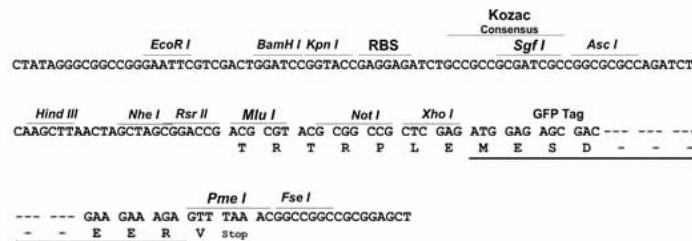
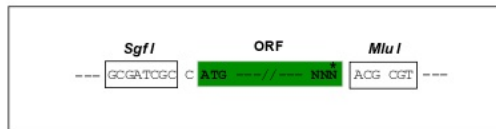
Protein Sequence: >Peptide sequence encoded by RG239833
 Blue=ORF Red=Cloning site Green=Tag(s)

MHRPHVPGCAA^{IK}FRSLGSAARSGAESEARAKMAAAKPTLTDSL^{SF}CLAQLAAAAGEALGGEKDPATNE
 TPLSRALLALRTRHIKAAGGIERFRARGGLRPLLALLRRAAAAGSAPSQAGPGSAPSSAASGASSPAPA
 SGPAPS^{AV}SSSSPTPPVRLRKTLDLALSILADCCTEGACRTEVRRLLGGILPLVTILQCMKTDSIQNRTA
 RALGNLAMEPESCGDIHCAGAVPLL^{VE}SLTACQDSQCLQSVVRLRNLADSPQHRLALAQQGAVRPLAE
 LLATAPDAALTLALVRALLELSRGC^{SR}ACAEQLSLGGGLGPLVSLASHPKRAVREGTILILANLCAQGL
 IRPALGNAGGVEVLVDEL^{RQ}RRDPNGASPTSQQPLVRAVCLLCREAINRRLRDAGGLDLLMGLLRDPR
 ASAWHPRIVAALVGFLYDTGALGRLQALGLVPLL^{AG}QLCGEAGEEEEEEGREASWDFPEERTPERAQQG
 SFRSLRSLWIS^EGYATGPDDISPDWSPEQCPEPEMESPAPTPTSLRAPRTQRTPGRSPAAAIEEPWG
 REGPALLLLSRFSQAPDPSGALVTGPALYGLLTYVTGAPGPPSPRALRILSRLTCNPACLEAFVRSYGA
 ALLRAWLVLGVAPDDWPAPRARPTLHSRHRELGERLLQNLTVQAESPF^{GV}GALTHLLL^{SG}SPEDRVACA
 LTLPFICR^KPSLWRRLLLEQGLRLLLAALTRPAPHPLFLFFAADSLSCLQDLVSPTVSPAVPQAVPMD
 LDSPSPCLYEPLLGPAPVPAPDLHFLLD^{SG}LQLPAQRAASATASPF^{FR}ALLSGSF^{AE}AQMDLVPLRGLS
 PGAAWPVLHHLHGCRGCGAALGPVPPGQPLL^{GS}EAEAEAEAGRFLLPGL^{EEEE}EEAVGR^{IHL}GPQGG
 PESVGEV^{FRL}GRPRLAAHCARWTLGSE^{QC}PRKRLALVGLVEAAGEEAGPLTEALLAVVMGIELGARVP
 A
 TRTRPLEMESDESGLPAMEIECRITGTLNGVEFELVGGEGTPEQGRMTNKMSTKGALTFSPYLLSHV
 MGYGFYHFGTYPSGYENPFLHAINNGGYNTRIEKYEDGGVLHVSFSYRYEAGRVIGDFKVMGTGFPED
 SVIFTDKIIRSNATVEHLHPMGDNDLDGSFTRTFSLRDGGYSSVVD^{SH}MHFKSAIHPSILQNGGPMFA
 FRRVEEDHSNTELGIVEYQHAFKTPDADAGEERV

Restriction Sites: SgfI-MluI

Cloning Scheme:

Cloning sites used for ORF Shutting:

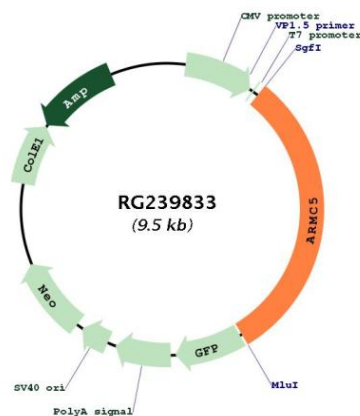


ACCN: NM_001301820

ORF Size: 2901 bp

OTI Disclaimer:	The molecular sequence of this clone aligns with the gene accession number as a point of reference only. However, individual transcript sequences of the same gene can differ through naturally occurring variations (e.g. polymorphisms), each with its own valid existence. This clone is substantially in agreement with the reference, but a complete review of all prevailing variants is recommended prior to use. More info
OTI Annotation:	This clone was engineered to express the complete ORF with an expression tag. Expression varies depending on the nature of the gene.
Components:	The ORF clone is ion-exchange column purified and shipped in a 2D barcoded Matrix tube containing 10ug of transfection-ready, dried plasmid DNA (reconstitute with 100 ul of water).
RefSeq:	NM_001301820.1 , NP_001288749.1
RefSeq Size:	3664 bp
RefSeq ORF:	2904 bp
Locus ID:	79798
UniProt ID:	Q96C12
Cytogenetics:	16p11.2
MW:	101.5 kDa
Gene Summary:	This gene encodes a member of the ARM (armadillo/beta-catenin-like repeat) superfamily. The ARM repeat is a tandemly repeated sequence motif with approximately 40 amino acid long. This repeat is implicated in mediating protein-protein interactions. The encoded protein contains seven ARM repeats. Mutations in this gene are associated with primary bilateral macronodular adrenal hyperplasia, which is also known as ACTH-independent macronodular adrenal hyperplasia 2. Alternatively spliced transcript variants encoding different isoforms have been found for this gene. [provided by RefSeq, Sep 2014]

Product images:



Circular map for RG239833