

Product datasheet for **RG239825**

KCNH6 (NM_001278919) Human Tagged ORF Clone

Product data:

Product Type:	Expression Plasmids
Product Name:	KCNH6 (NM_001278919) Human Tagged ORF Clone
Tag:	TurboGFP
Symbol:	KCNH6
Synonyms:	ERG-2; ERG2; hERG-2; HERG2; Kv11.2
Mammalian Cell Selection:	Neomycin
Vector:	pCMV6-AC-GFP (PS100010)
E. coli Selection:	Ampicillin (100 ug/mL)



[View online »](#)

ORF Nucleotide Sequence:

>RG239825 representing NM_001278919.
 Blue=ORF Red=Cloning site Green=Tag(s)

```

GCTCGTTTAGTGAACCGTCAGAATTTTGTAAATACGACTCACTATAGGGCGGCCGGGAATTCGTGACTG
GATCCGGTACCGAGGAGATCTGCCGCCCGCATCGCC
ATGCCGGTCCGCAGGGGCCACGTCGTCCTCCCAAAACACTTACCTGGACACCATCATCCGCAAGTTCGAG
GGCCAAAGTCGGAAGTTCCTGATTGCCAATGCTCAGATGGAGAAGTGCGCCATCATTACTGCAACGAC
GGCTTCTGCGAACTCTTCGGCTACTCCCGAGTGGAGGTGATGCAGCAACCCTGCACCTGCGACTTCCTC
ACAGGCCCAACACACCAAGCAGCGCCGTGTCCCGCTAGCGCAGGCCCTGCTGGGGCTGAGGAGTGC
AAGGTGGACATCTCTACTACCGCAAGGATGCCTCCAGCTTCCGCTGCCTGGTAGATGTGGTGCCCGTG
AAGAACGAGGACGGGGCTGTCATCATGTTCACTTCAACTTCGAGGACCTGGCCAGCTCCTGGCCAAG
TGCAGCAGCCGACGCTTGTCCAGCGCTGTTGTCCAGAGCTTCTGGGCTCCGAGGGCTCATGGC
AGGCCAGGCGGACAGGGCCAGGCACAGGCAGGGGCAAGTACAGGACCATCAGCCAGATCCACAGTTC
ACGCTCAACTTCGTGGAGTTCAACTTGGAGAAGCACCGCTCCAGCTCCACCACGGAGATTGAGATCATC
GGCCCCATAAGGTGGTGGAGCGGACACAGAAGCTCACTGAGAAGGTACCCAGGTCCTGTCCCTGGGC
GGGATGTGCTGCCGGAGTACAAGCTGCAGGCGCCGCGCATCCACCGCTGGACCATCCTGCACTACAGC
CCCTTCAAGGCCGTGTGGGACTGGCTATCCTGCTGCTGGTCATCTACACGGCTGTCTTACGCCCTAC
TCAGCCGCTTCTGCTCAGCGATCAGGACGAATCACGGCGTGGGGCTGCAGCTATACCTGCAGTCCC
CTCACTGTGGTGGATCTCATCGTGGACATCATGTTCTGCTGGACATCGTCATCAACTTCCGACCACC
TATGTCAACACCAATGATGAGGTGGTACGCCACCCCGCCGCATCGCCGTCCACTACTTCAAGGGCTGG
TTCCTCATTGACATGGTGGCCGCATCCCTTTCGACCTCCTGATCTTCCGCACTGGCTCCGATGAGACC
ACAACCTGATTGGGCTATTGAAGACAGCGCGGCTGCTGCGGCTGGTGGCGTAGCACGGAAGCTGGAC
CGTACTCTGAGTATGGGGCGGCTGTGCTTCTTGTCTCATGTGCACCTTCGCGCTCATAGCCGCTGG
CTGGCCTGCATCTGGTACGCCATCGGCAATGTGGAGCGGCCCTACCTAGAACAACAAGATCGGCTGGCTG
GACAGCCTGGGTGTGACGCTTGGCAAGCGCTACAACGGCAGCGACCCAGCCTCGGGCCCTCGGTGCAG
GACAAGTATGTACAGCCCTCTACTTCACTTTCAGCAGCCTCACCAGCGTGGGCTTCGGCAATGTCTCG
CCCAACACCAACTCCGAGAAGGTCTTCTCCATCTGCGTCATGCTCATCGGCTCCCTGATGTACGCCAGC
ATCTTCGGGAACGTGTCCGCGATCATCCAGCGCTGTACTCGGGCACCGCGCTACCACACGCAGATG
CTGCGTGTCAAGGAGTTCATCCGCTTCCACCAGATCCCAACCCACTGCGCCAGCGCTGGAGGAGTAT
TCCAGCAGCCTGGTCTACACCAATGGCATTGACATGAACCGGTGCTGAAGGGCTTCCCGAGTGC
CTGACGGTGCATCTGCCTGCACCTGCACCGCGACTGCTGCAGCACTGCCAGCTTTCAGCGGCGCC
GGCAAGGGCTGCCTGCGCGGCTAGCCGTCAAGTCAAGACCACCACGCGCCGCTGGGACACGCTG
GTGCACCTCGGGACGCTGCTCTCCACCCTCACTTTCATCTCCCGAGGCTCCATCGAGATCCTGCGCGAC
GACGTGGTCTGGCCATCCTAGGAAAGAATGACATCTTTGGGAAACCCGTGAGCCTCCATGCCAGCCA
GGCAAGTCCAGTGCAGACGTGCGGGCTCTGACCTACTGCGACCTGCACAAGTCCAGCGGGCAGATCTG
CTGGAGGTGTGGACATGTACCCGGCTTTGCGGAGAGCTTCTGGAGTAAGTGGAGGTACCTTCAAC
CTGCGGGACGACCGGGGGTCTCCACTCATCCCCGACAGGCTCCTGGCAGCCAAGACCACCAAGGT
TTCTTTCTCAGTGACAACAGTCAAGTGCAGCCCTCCCTGAGCATCTCAGATGCATCTGGCCTCTGG
CCTCTGAAGCTGGGCTCCAGGCTAGAGCAGCTCCAGGCCAGATGAACAGGCTGGAGTCCCGCTGTCC
TCAGACCTCAGCCGATCTTGCAGCTCCTCCAGAAGCCATGCCCCAGGGCCACGCCAGCTACATTCTG
GAAGCCCCTGCCTCCAATGACCTGGCCTTGGTTCTATAGCCTCGGAGACGACGAGTCCAGGGCCAGG
CTGCCAGGGCTTTCTGCCTCTGCACAGACCCCAAGCTATGGAGACTTGGATGACTGTAGTCAAAG
CACAGGAACCTCCCCAGGATGCCTCACCTGGCTGTGGCAACGGACAAAACCTGGCACCATCTCA
GAACAGGAACAGCCTGAGGGCTCTGGCCACCCCTAGCCTCACCTTACATCCCCTGGAAGTACAAGGA
CTCATCTGTGGTCCCTGCTTCTCCTCCCTGAACACCTTGGCTCTGTTCCCAAGCAGCTGGACTTC
CAGAGACATGGCTCAGATCCTGGATTTGCAGGGAGTTGGGGCCAC
ACGCGTACGCGGCCGCTCGAG - GFP Tag - GTTTAAAC
  
```

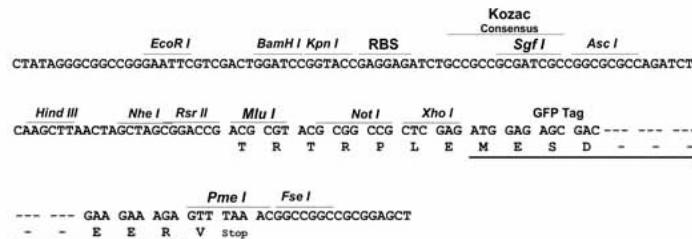
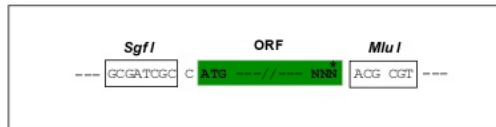
Protein Sequence: >Peptide sequence encoded by RG239825
 Blue=ORF Red=Cloning site Green=Tag(s)

MPVRRGHVAPQNTYLDTIIRKFEGQSRKFLIANAQMENCAIICYNDGFCELFGYSRVEVMQPCTCDFL
 TGPNTPSSAVSRLAQALLGAECKVDILYYRKDASSFRCLVDVVPVKNEGDGAVIMFILNFEDLAQLLAK
 CSSRSLSQLLSQSFSGSESHGRPGGPGGTGRGKYRTISQIPQFTLNFVEFNLEKHRSSSTTEIEII
 APHKVVERTQNVTEKVTQVLSLGADVLPEYKLAQPRIHRWTLHYSPFKAVWDWLILLVITYAVFTPY
 SAAFLLSDQDESRRGACSYTCSPLTVVDLIVDIMFVVDIVINFRTTYVNTNDEVVSHPRRIAVHYFKGW
 FLIDMVAaipfdllifrtgsdetttligllktarllrlvrvarklDRYSEYGAAVLFLLMCTFALIAHW
 LACIWIYAIGNVERPYLEHKIGWLDLGLVQLGKRYNGSDPASGSPVQDKYVTALYFTFSSLTSVGFNGVS
 PNTNSEKVFISICVMLIGSLMYASIFGNVSAIIQRLYSGTARYHTQMLRVKEFIRFHQIPNPLRQRLEEY
 FQHAWSYTNGIDMNAVLKGFPECLQADICLHLHRALLQHCPAFSGAGKGLRALAVKFKTTHAPPGDTL
 VHLGDVLSLTYFISRGSIEILRDDVVVAAILGKNDIFGEPVSLHAQPGKSSADVRALTYCDLHKIQRADL
 LEVLDMPAFAESFWSKLEVTFNLRDAAGLHSSPRQAPGSQDHQGFLLSDNQSDAAPPLISDASGLW
 PELLQEMPPRHSPQSPQEDPDCWPLKLSRLEQLQAQMNRLERSVSSDLSRILQLLQKPMPOGHASYIL
 EAPASNDLALVPIASETTPGPRLPQGFPPAQTPSYGDLDCCSPKHRNSSPRMPLAVATDKTLAPSS
 EQEQPEGLWPPLASPLHPLEVQGLICGPCFSSLPEHLGSVPKQLDFQRHGSDFGAGSWG
TRTRPLEMESDESGLPAMEIECRITGTLNGVEFELVGGEGTPEQGRMTNKMSTKGALTFSPYLLSHV
MGYGFYHFGTYPSTYENPFLHAINNGGYNTRIEKYEDGGVLHVSFSYRYEAGRVIGDFKVMGTGFPED
SVIFTDKIIRSNATVEHLHPMGDNDLDGSFTRTFSLRDGGYSSVVDVSHMHFKSAIHPSILQNGGPMFA
FRRVEEDHSNTELGIVEYQHAFKTPDADAGEERV

Restriction Sites: SgfI-MluI

Cloning Scheme:

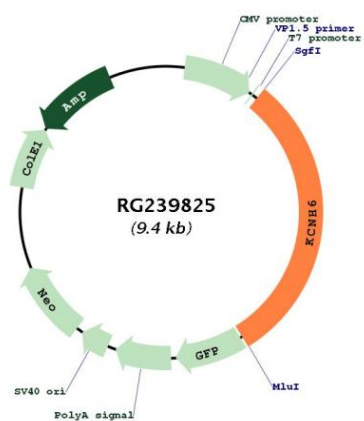
Cloning sites used for ORF Shutting:



ACCN: NM_001278919

ORF Size:	2874 bp
OTI Disclaimer:	The molecular sequence of this clone aligns with the gene accession number as a point of reference only. However, individual transcript sequences of the same gene can differ through naturally occurring variations (e.g. polymorphisms), each with its own valid existence. This clone is substantially in agreement with the reference, but a complete review of all prevailing variants is recommended prior to use. More info
OTI Annotation:	This clone was engineered to express the complete ORF with an expression tag. Expression varies depending on the nature of the gene.
Components:	The ORF clone is ion-exchange column purified and shipped in a 2D barcoded Matrix tube containing 10ug of transfection-ready, dried plasmid DNA (reconstitute with 100 ul of water).
RefSeq:	NM_001278919.2
RefSeq Size:	3783 bp
RefSeq ORF:	2877 bp
Locus ID:	81033
UniProt ID:	Q9H252
Cytogenetics:	17q23.3
Protein Families:	Druggable Genome, Ion Channels: Other, Transmembrane
MW:	106.9 kDa
Gene Summary:	Voltage-gated potassium (Kv) channels represent the most complex class of voltage-gated ion channels from both functional and structural standpoints. Their diverse functions include regulating neurotransmitter release, heart rate, insulin secretion, neuronal excitability, epithelial electrolyte transport, smooth muscle contraction, and cell volume. This gene encodes a member of the potassium channel, voltage-gated, subfamily H. This member is a pore-forming (alpha) subunit. Alternative splicing results in multiple transcript variants that encode different isoforms. [provided by RefSeq, Jul 2013]

Product images:



Circular map for RG239825