

Product datasheet for **RG239824**

MAN2B2 (NM_001292038) Human Tagged ORF Clone

Product data:

Product Type:	Expression Plasmids
Product Name:	MAN2B2 (NM_001292038) Human Tagged ORF Clone
Tag:	TurboGFP
Symbol:	MAN2B2
Mammalian Cell Selection:	Neomycin
Vector:	pCMV6-AC-GFP (PS100010)
E. coli Selection:	Ampicillin (100 ug/mL)



[View online »](#)

ORF Nucleotide Sequence:

>RG239824 representing NM_001292038.
 Blue=ORF Red=Cloning site Green=Tag(s)

```

GCTCGTTTAGTGAACCGTCAGAATTTTGTAAACGACTCACTATAGGGCGGCCGGGAATTCGTGACTG
GATCCGGTACCGAGGAGATCTGCCGCCACGATCGCC
ATGGGGCAGCTGTGCTGGCTGCCGCTGCTGGCACCGCTCCTGTTGCTGCGACCGCCAGGGTCCAGTCC
GCCGGCCCCATCCGGCCCTTCGTGGTGCCCCACAGCCACATGGAGCTGGGCTGGGTCTACTGTGCAG
GAAAGCATGCGGGCGTAGCGCCCAATGTCTACACCTCAGTGGTGAAGAGCTGGCCCGGCCAGCAG
CGCCGGTTCATCGCTGTGGAGCAGGAGTTTTCCGGCTGTGGTGGATGGCGTCGCCCTCGGACCAGCAG
AAATACCAGTCCGCCAGCTCCTGGAGGAAGGACGCTGGAATTTGTCATCGGAGGCCAGGTCATGCAT
GACGAGGCTGTGACGCACCTTGATGACCAGATCCTGCAGCTCACAGAAGGACACGGGTTTCTCTATGAA
ACATTTGGGATCCGGCCACAGTTCTCCTGGCACGTTGACCCGTTTGGCGCTCTGCCACGACGCCACC
CTATTTGCGCTGGCGGGCTCAATGCCACCTCGGCTCCCGATCGACTACGACCTGAAGGCAGCCATG
CAGGAGGCCCGGGGGCTGCAGTTCGTGTGGCAGGGTCCCATCCCTCTCAGAGCGGCAGGAAATCTTC
ACGCACATCATGGACCAGTACAGCTACTGCACCCCGTCCACATCCCTTCTCCAACAGGTCAAGATTT
TACTGGAATGGCGTGGCTGTCTTCCCAAGCTCCCAAGATGGGGTGTACCCCAACATGAGTGAGCCT
GTCACCCAGCCAACATCAACCTCTATGCCGAGCTCGGTGTCTCGGTGCAGTATGCCACGCTGGCGGAC
TACTTCGTGCCCTGCACGCTCTCAATGTACCTGGCGTGTCCGCGACCACCAGACTTCTGCCCTAT
TCCACAGAACCATTCCAGGCCTGGACGGCTTCTACAGTCCCGCAGCTCACTGAAGGGGCTGGCCCGG
CGAGCCAGCGCCTTGTGTATGCCGGGGAGTCCATGTTACACGCTACCTGTGGCCGGCCCCCGTGGG
CATCTGGACCCACCTGGGCCCTGCAGCAGCTCCAGCAGTTCGCTGGCCGTCTCCGAGGTCCAGCAC
CATGATGCCATCACTGGGACTGAGTCCCAAGGTGAGAGACATGTACGCAACGCACCTGGCCTCGGGG
ATGCTGGCATGCGCAAGCTGATGGCTCCATCGTCTAGATGAGCTCCAGCCCCAGGCCATCCATGCGG
GCCAGTCCGATGCAGGACCTGCAGGACATTTTGCCTCGGTCTACAACCGCTGGCCTGGACGGTCAAC
ACCATCGTCAACCTGACTGTTGGTTTCCCTGGAGTCCGCGTACAGATGAGGCGGGCCACCAGTGCCC
TCGCAGATCCAGAACTCAACAGAGACCCATCTGCGTATGACCTGCTTATTCTGACCACAATCCCAGGC
CTCAGTTACCGGCACTACAACATCAGACCCACTGCAGGGGCCAAGAGGGCACCCAGGAGCCGGCTGCC
ACTGTGGCGAGCACCCCTCAATTTGGCCGAGGCTGAGGAGACGCACCAGCCATGCGGGCAGGACTTGG
GTGCTGTGGCAAACGACTGCTACATTGTGCTGCTCGACCAGGATACCAACTGATGCACAGCATCTGG
GAGAGACAGAGTAACCGAACGGTGCAGCTGACCCAGGAATTCCTGGAGTACCACGTCAACGGGGATGTG
AAACAGGGCCCCATTTCCGATAACTACCTGTTACACCCGGCAAGGCCGGTGCCTGCGTGGGAAGCT
GTGAAATGGAGATTGTGGCGGGACAGTGTGACTGAGATCCGGCAGTACTTCTACAGGAACATGACA
GCACAGAATTACAGTATGCAATCCGCTCCCGGCTCACCCATGTGCCGAGGGCCATGACGGGGAGCTG
CTCTGCCACCGGATAGAGCAGGAGTACCAAGCCGGCCCCCTGGAGCTGAACCGTGAGGCTGTCTGAGG
ACCAGCACCAACCTAAACAGCCAGCAGGTCACTACTCAGACAACAACGGCTACCAGATGCAGCGGAGG
CCCTACGTTTCTATGTGAACAACAGCATCGCCCGGAATTACTACCCATGGTTCAGTCGGCCTTCATG
GAGGATGGCAAAAGCAGGCTTGTGTTGCTGTGCGAGCGGGCACATGGCATCTCCAGCCAAGGGAATGGG
CAGGTGGAGGTCACTGCTCACCGCGGCTGTGGAACAACCTCGACTGGGACCTGGGCTACAACCTCAG
CTGAACGACACCTCAGTCGTCCACCCAGTCTGGCTTCTGCTGGGATCCTGGTCCCTCACCACTGCC
CTGCGCCAGAGGAGCGCACTGGCGCTGCAGCACAGGCCCGTGGTGTGTTTCGGAGACCTCGCTGGGACT
GCGCCGAAGCTCCAGGACCCAGCAGCAAGAGCCGTGACGCTGCCCCGAATTTACCTGCAGATC
CTGAGCATCCCTGGCTGGCGCTACAGCTCCAACCACAGGAGCACTCTCAGAATCTCCGAAAGGCCAT
CGAGGGGAAGCCAGGCTGACCTCCGCCGTGCTCTGCTGCGGCTCTACCACCTGTATGAAGTGGCGGAG
GACCCAGTCTGTCTCAGCCAGTGACAGTGAATCTGGAGGCTGTGCTGCAGGCGCTGGGGTCCGTGGTG
GCAGTGGAGGAGCGCTCGCTCACAGGGACCTGGGATTTGAGCATGCTGCACCGCTGGAGCTGGAGGACG
GGGCTGGCCGCCACAGAGGTGACACCCTCTCCCTCGAGGCCACCAGGAGGCCCATCATCACCGTC
CACCCAAAGGAAATCCGGACGTTCTTTATTCACTTTCAACAGCAG
ACGCGTACGCGGCCGCTCGAG – GFP Tag – GTTTAAAC
  
```

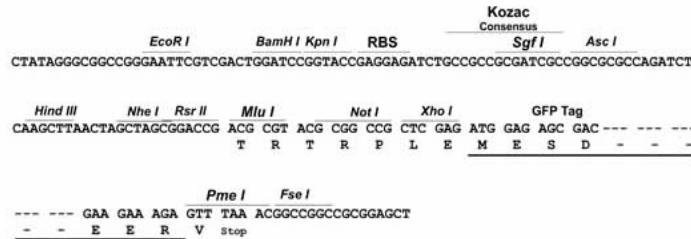
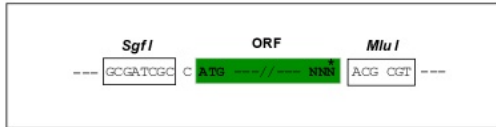
Protein Sequence: >Peptide sequence encoded by RG239824
 Blue=ORF Red=Cloning site Green=Tag(s)

MGQLCWLPLLAPLLLLRPPGVQSAGPIRAFVVPVSHMDVGWVYTVQESMRAYAANVYTSVVEELARGQQ
 RRFIAVEQEFFRLWWDGVASDQKQYQVRQLLEGRLEFVIGGQVMHDEAVTHLDDQILQLTEGHGFLYE
 TFGIRPQF SWHVDPFGASATPTL FALAGFNAHLGSRIDYDLKAAMQEARGLQFVWRGSPSLSERQEIF
 THIMDQYSYCTPSHIPFSNRSGFYWNGVAVFPKPPQDGVYPMSEPVTPANINL YAELGVSQYATLGD
 YFRALHALNVTWRVDRDHDFLPYSTEPFQAWTGFYTSRSSLKGLARRASALLYAGESMFTRYLWPAPRG
 HLDPTWALQQLQQLRWAVSEVQHDAITGTESPKVRDMYATHLASGMLGMRKLMAISIVLDELQPAPMA
 ASSDAGPAGHFASVYNPLAWTVTTIVTLTVGFPGVVRTDEAGHPVPSIQNSTETPSAYDLLILTTIPG
 LSYRHYNIRPTAGAQEGTQEPAAVASTLQFGRRLRRRTSHAGRYLVPVANDCYIVLLDQDNLMHSIW
 ERQSNRTVRVTQEFLEYHVNGDVKQGPISDNYLFTPGKAAVPAWEAVEMEIVAGQLVTEIRQYFYRNMT
 AQNYTYAIRSRLTHVPQGHGDELLCHRIEQEYQAGPLELNREAVLRTSTNLNSQQVIYSDNNGYQMQR
 PYVSYVNNSIARNYYPMVQSAFMEDGKSRLVLLSERAHGISSQNGQVEVMLHRRLWNNFDWDLGYNLT
 LNDTSVHPVLLWLLLSWSLTTALRQSRALALQHRPVVLFGLDAGTAPKLPGPQQEAVTLPPNHLQI
 LSI PGWRYSSNHTESQNL RKGHRGEAQADLRRVLLRLYHLYEVGEDPVL SQPVTVNLEAVLQALGSVV
 AVEERSLTGTWDL SMLHRWSWRTGPRHRGDTTSPSRPPGGPIITVHPKEIRTFIHFQQQ
TRTRPLEMESDESGLPAMEIECRITGTLNGVEFELVGGEGTPEQGRMTNKMSTKGALTFSPYLLSHV
MGYGFYHFGTYPSTYENPFLHAINNGGYNTRIEKYEDGGVLHVSFSYRYEAGRVIGDFKVMGTGFPED
SVIFTDKIIRSNATVEHLHPMGDNDLDGSFTRTFSLRDGGYSSVVD SHMHFKSAIHPSILQNGGPMFA
FRRVEEDHSNTELGIVEYQHAFKTPDADAGEERV

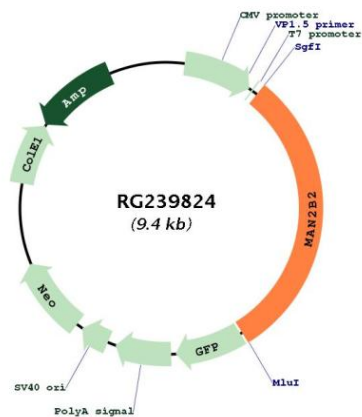
Restriction Sites: Sgfl-MluI

Cloning Scheme:

Cloning sites used for ORF Shutting:



ACCN:	NM_001292038
ORF Size:	2874 bp
OTI Disclaimer:	The molecular sequence of this clone aligns with the gene accession number as a point of reference only. However, individual transcript sequences of the same gene can differ through naturally occurring variations (e.g. polymorphisms), each with its own valid existence. This clone is substantially in agreement with the reference, but a complete review of all prevailing variants is recommended prior to use. More info
OTI Annotation:	This clone was engineered to express the complete ORF with an expression tag. Expression varies depending on the nature of the gene.
Components:	The ORF clone is ion-exchange column purified and shipped in a 2D barcoded Matrix tube containing 10ug of transfection-ready, dried plasmid DNA (reconstitute with 100 ul of water).
RefSeq:	NM_001292038.1 , NP_001278967.1
RefSeq Size:	4048 bp
RefSeq ORF:	2877 bp
Locus ID:	23324
UniProt ID:	Q9Y2E5
Cytogenetics:	4p16.1
Protein Families:	Druggable Genome, Secreted Protein
Protein Pathways:	Other glycan degradation
MW:	108.6 kDa

Product images:


Circular map for RG239824