

## Product datasheet for **RG239823**

### **KA1 (GRIK4) (NM\_001282470) Human Tagged ORF Clone**

#### **Product data:**

Product Type:	Expression Plasmids
Product Name:	KA1 (GRIK4) (NM_001282470) Human Tagged ORF Clone
Tag:	TurboGFP
Symbol:	GRIK4
Synonyms:	EAA1; GluK4; GluK4-2; GRIK; KA1
Mammalian Cell Selection:	Neomycin
Vector:	pCMV6-AC-GFP (PS100010)
E. coli Selection:	Ampicillin (100 ug/mL)



[View online »](#)

**ORF Nucleotide Sequence:**

>RG239823 representing NM\_001282470.  
 Blue=ORF Red=Cloning site Green=Tag(s)

```

GCTCGTTTAGTGAACCGTCAGAATTTTGTAAACGACTCACTATAGGGCGGCCGGGAATTCGTGCGACTG
GATCCGGTACCGAGGAGATCTGCCGCCCGCATCGCC
ATGCCCCGCGTCTCGGCGCCTTTGGTGTCTTCTCCTGCTGGCTCGTGATGGTGCCTGCAGCCCGCAC
TCCTTGAGGATCGTGTCTATCTTGACGACCCCATGGAGTGCAGCAGAGGGGAGCGGCTCTCCATCAC
CTGGCCAAGAACCGCATCAACCGCTCCTGAGAGGCTGGCAAGGCCAAGGTCGAAGTGGACATCTTT
GAGCTTCTCAGAGACAGCGAGTACGAGACTGCAGAAACCATGTGTCAGATCCTCCCAAGGGGTGGTC
GCTGTCTCGGACCATCGTCCAGCCAGCCTCCAGCTCCATCATCAGCAACATCTGTGGAGAGAAGGAG
GTCCCTCACTTCAAAGTGGCCCCAGAGGAGTTCGTCAAGTTCAGTTCAGAGATTCACAACCTGAAC
CTCCACCCAGCAACTGACATCAGCGTGGCTGTAGCTGGGATCCTGAATTCTTCAACTGCACCACC
GCCTGCCTCATCTGTGCCAAAGCAGAATGCCTTTAAACCTAGAGAAGCTGCTCCGGCAATTCCTTATC
TCCAAGGACACGCTGTCCGTCCGCATGCTGGATGACACCCGGGACCCACCCCGCTCTCAAGGAGATC
CGGGACGACAAGACCGCCACCATCATCATCCACGCCAACGCTCCATGTCCACACCATCCTCCTGAAG
GCAGCCGAACCTGGGATGGTGTGACGCTATTACACATACATCTTACTAATCTGGAGTTCCTACTCCAG
AGAATGGACAGCCTTGTGGATGATCGTGTCAACATCCTGGGATTTTCCATTTTCAACCAATCCCATGCT
TTCTTCCAAGAGTTTGCCAGAGCCTCAACCAGTCTGGCAGGAGAACTGTGACCATGTGCCCTTCACT
GGGCTGCGCTCTCCTCGGCCCTGCTGTTTGTGCTGTATGCTGTGGTACTGCGGTGCGAGAACTG
AACCGGAGCCAAGAGATCGGCGTGAAGCCCTTGTCTGCGGCTCGGCCAGATCTGGCAGCACGGCACC
AGCCTCATGAACTACCTGCGCATGGTGAATTGGAAGTCTTACCGGCCACATTGAATTCACAGCAAA
GGCCAGAGGTCCAACACGCTTTGAAAACTTACAGTTCACAAGGAATGGTTTTCGGCAGATCGGCCAG
TGGCAGTGGCAGAGGGCTCAGCATGGACAGCCACTCTATGCCTCCAACATCTCGGACTCTCTTTC
AACACCACCTGGTGTGACACCATCCTGGAGAACCATATTTAATGCTGAAGGGGAACCACAGGAG
ATGGAAGCAATGACCGCTACGAGGGCTTCTGTGTGGACATGCTCAAGGAGCTGGCAGAGATCCTCCGA
TTCAACTACAAGATCCGCTGGTTGGGGATGGCGTGTACGGCGTTCGAGGCCAACGGCACCTGGACG
GGAATGGTGGGGAGCTGATCGTAGGAAAGCAGATCTGGCTGTGGCAGGCTCACCATACAGCTGAA
CGGGAGAAGGTGATTGATTTCTTAAGCCATTCAGTCTGGGAATTAGCATTCTTACCAGCTTCTT
ATGGGACGCAACCCGGCTATTTCTCCTCCTGGACCATTTTCTCGGGCGTCTGGCTTTCATGCTT
CTAGCCTATCTGGCCGTGAGTGTCTCTTCTGCTGGTGGCTCGGTTGACGCCCTACGAGTGGTACAGC
CCACCCCATGTGCCAGGGCCGTGCAACCTCCTGGTGAACCAGTACTCCTGGGCAACAGCCTCTGG
TTTCCGGTGGGGGGTTCATGCAGCAAGGCTCCACCATCGCCCTCGCGCTTATCCACCCGCTGTGTC
AGTGGCGTCTGGTGGCATTACGCTGATCATCTCATCTACACGGCCAACCTGGCAGCCTTCTG
ACCGTGCAGCGCATGGATGTGCCATTGAGTCACTGGATGACCTGGCTGACCAGACCGCCATTGAATAT
GGCACAATTCACGGAGGCTCCAGCATGACCTTCTTCCAAAATCCCGCTACCAGACCTACCAACGCATG
TGAATTACATGTATTCCAAGCAGCCAGCGTGTTCGTGAAGAGCACAGAGGAGGGAATCGCCAGGGTG
TTGAATCCAACACGCTTCTCCTGGAATCCACCATGAACGAGTACTATCGGCAGCGAACTGCAAC
CTCACTCAGATTTGGGGCTGCTGGACCAAGGGCTATGGGATTGGCATGCCAGTGGCTCGGTTTTC
CGGGACGAGTTTGATCTGGCCATTTCTCAGCTGCAGGAGAACAACCGCTGGAGATCCTGAAGCGCAA
TGGTGGGAAGGAGGAAGTGCSCCAAGGAGGAAGATCACAGAGCTAAAGGCTGGGAATGGAGAATT
GGTGAATCTTTGTGTTCTTATTTGTGCTTAATCGTGGCCATTTTATGGCTATGTTGGAGTTTTTA
TGGACTCTCAGACTCAGAAGCAACTGAGGTGTCCGTCTGCCAGGAGATGGTGACCGAGCTGCGCAGC
ATTATCTGTGTGAGGACAGTATCCACCCCGCCGGCGCGCCGAGTCCCGCCGCCCGGCCCC
ATCCCGAGGAGCGCCGACCGGGGGCACGGCGAGCTCAGCAACGGGAAGCTGTGCGGGGAGGGGAG
CCCGACAGCTCGCGCAGAGACTGGCGCAGGAGGCGCCCTGGTGGCCCGGGCTGCACGCACATCCGC
GTCTGCCCGAGTCCCGCTTCCAGGGCTGCGGGCACGGCCGTGCCCCGCCGACGAGGAGAGC
CTGGAGTGGGAGAAAACCAACAGCAGCGAGCCCGAG
ACGCGTACGCGGCCGCTCGAG - GFP Tag - GTTTAAAC
  
```

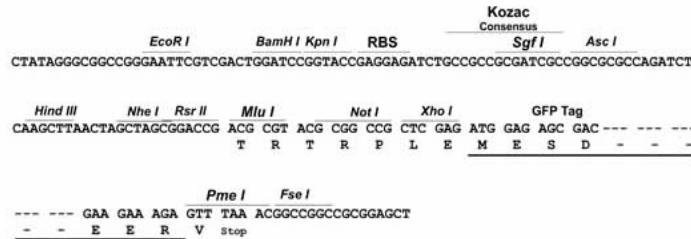
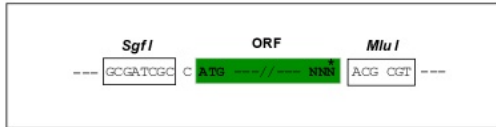
**Protein Sequence:** >Peptide sequence encoded by RG239823  
 Blue=ORF Red=Cloning site Green=Tag(s)

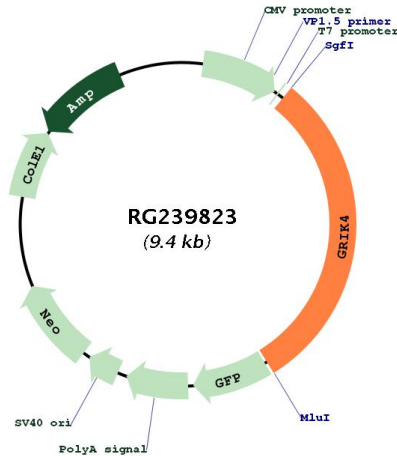
MPRVSAPLVLLPAWLVMVACSPHSLRIAAILDDPMECSRGERLSITLAKNRINRAPERLGKAKVEVDIF  
 ELLRDSEYETAETMCQILPKGVAVLGPSSPASSIIISNICGEKEVPHFKVAPEEFVKFQFQRFTTLN  
 LHPNNTDISVAVAGILNFFNCTTACLICAKAECLLNLEKLLRQFLISKDTLSVRMLDDTRDPTLLKEI  
 RDDKTATIIIHANASMSHTILLKAAELGMVSAYTYIFTNLEFSLQRMDSLVDDRNVILGFSIFNQSHA  
 FFQEFASQLNQSWQENCDHVPFTGPALSSALLFDAVYAVVTAVQELNRSQEIQVKPLSCGSAQIWQHG  
 TSLMNYLRMVELEGLTGHIEFNQSRSNYALKILQFTRNGFRQIQQWHVAEGLSMDSHLYASNISDTL  
 NTTLVVTILENYPYMLKGNHQEMEGNDRYEGFCVDMLKELAEILRFNYKIRLVGDGVYGPVPEANGTWT  
 GMVGELIARKADLAVAGLTITAEREKVIDFSKPFMTLGISILYRVHMGRKPGYFSFLDPFSPGVWLFML  
 LAYLAVSCVFLVARLTPYEWYSPHPCAQGRNLLVNQYSLGNSLWFPVGGFMQQGSTIAPRALSTRCV  
 SGVWVAFTLIIISYANLAAFLTVQRMVPIESVDDLADQTAIEYGTIHGGSSMTFFQNSRYQTYQRM  
 WNYMYKQPSVFKSTEEGIARVLSNYAFLLESTMNEYRQRNCNLQIGLLDTKGYGIGMPVGSVF  
 RDEFDLAILQLQENNRLEILKRKWWEGGKCPKEEDHRAKGLGMENIGGIFVVLICGLIVAI FMAMLEFL  
 WTLRHSEATEVSVCEMVELRSIILCQDSIHPRRRRAVPPRPPPIPEERRRPRGTATLSNGKLCGAGE  
 PDQLAQLAQEAALVARGCTHIRVCPECRRFQGLRARPSPARSEESLEWEKTTNSSEPE  
 TRTRPLEMESDESGLPAMEIECRITGTLNGVEFELVGGEGTPEQGRMTNKMKSTKGALTFSPYLLSHV  
 MGYGFYHFGTYPYSGYENPFLHAINNGGYNTRIEKYEDGGVLHVSFSYRYEAGRVIGDFKVMGTGFPED  
 SVIFTDKIIRSNATVEHLHPMGDNDLDGSFTRTFSLRDGGYSSVVDSDHMHFKSAIHPSILQNGGPMFA  
 FRRVEEDHSNTELGIVEYQHAFKTPDADAGEERV

**Restriction Sites:** Sgfl-MluI

**Cloning Scheme:**

Cloning sites used for ORF Shutting:



**Plasmid Map:**


<b>ACCN:</b>	NM_001282470
<b>ORF Size:</b>	2868 bp
<b>OTI Disclaimer:</b>	The molecular sequence of this clone aligns with the gene accession number as a point of reference only. However, individual transcript sequences of the same gene can differ through naturally occurring variations (e.g. polymorphisms), each with its own valid existence. This clone is substantially in agreement with the reference, but a complete review of all prevailing variants is recommended prior to use. <a href="#">More info</a>
<b>OTI Annotation:</b>	This clone was engineered to express the complete ORF with an expression tag. Expression varies depending on the nature of the gene.
<b>Components:</b>	The ORF clone is ion-exchange column purified and shipped in a 2D barcoded Matrix tube containing 10ug of transfection-ready, dried plasmid DNA (reconstitute with 100 ul of water).
<b>RefSeq:</b>	<a href="#">NM_001282470.2</a> , <a href="#">NP_001269399.1</a>
<b>RefSeq Size:</b>	5770 bp
<b>RefSeq ORF:</b>	2871 bp
<b>Locus ID:</b>	2900
<b>UniProt ID:</b>	<a href="#">Q16099</a>
<b>Cytogenetics:</b>	11q23.3
<b>Protein Families:</b>	Druggable Genome, Ion Channels: Glutamate Receptors, Transmembrane
<b>Protein Pathways:</b>	Neuroactive ligand-receptor interaction
<b>MW:</b>	107.7 kDa

**Gene Summary:**

This gene encodes a protein that belongs to the glutamate-gated ionic channel family. Glutamate functions as the major excitatory neurotransmitter in the central nervous system through activation of ligand-gated ion channels and G protein-coupled membrane receptors. The protein encoded by this gene forms functional heteromeric kainate-preferring ionic channels with the subunits encoded by related gene family members. Alternatively spliced transcript variants encoding different isoforms have been found for this gene. [provided by RefSeq, Sep 2013]