

## Product datasheet for **RG239818**

### CTNNA2 (NM\_001282597) Human Tagged ORF Clone

#### Product data:

|                           |  |
|---------------------------|--|
| Product Type:             | Expression Plasmids                          |
| Product Name:             | CTNNA2 (NM_001282597) Human Tagged ORF Clone |
| Tag:                      | TurboGFP                                     |
| Symbol:                   | CTNNA2                                       |
| Synonyms:                 | CAP-R; CAPR; CDCBM9; CT114; CTNR             |
| Mammalian Cell Selection: | Neomycin                                     |
| Vector:                   | pCMV6-AC-GFP (PS100010)                      |
| E. coli Selection:        | Ampicillin (100 ug/mL)                       |



[View online »](#)

**ORF Nucleotide Sequence:**

>RG239818 representing NM\_001282597.  
 Blue=ORF Red=Cloning site Green=Tag(s)

```
GCTCGTTTAGTGAACCGTCAGAATTTTGTAAACGACTCACTATAGGGCGGCCGGGAATTCGTGCGACTG
GATCCGGTACCGAGGAGATCTGCCGCCACGATCGCC
ATGACTCGGCAACTTCACCTATCATTCTGAAATGGGACCCCAAAAGTTTGGAAATCCGGACGCTAACA
GTGGAAAGGCTGTTGGAGCCACTTGTACACAGGTGACTACACTTGTCAACACAAGCAACAAAGGCCCA
TCTGGTAAAAAGAAAGGGAGGTCAAAGAAAGCCCATGTACTAGCTGCCTCTGTAGAGCAAGCCACTCAG
AATTTCTGAAAAAGGGTGAACAGATCGCTAAGGAGAGTCAAGATCTCAAAGAAGAGTTGGTGGCTGCT
GTAGAGGATGTGCGCAAAACAAGGTGAGACGATGCGGATCGCCTCCTCCGAGTTTGCAGATGACCCTTGC
TCGTGGTAAAGCGCGCACCATGGTACGGGCGCAAGGGCTTTGCTCTCCGCGGTGACACGCTTACTC
ATCCTGGCGGACATGGCAGATGTCATGAGACTTTTATCCCATCTGAAAATGTGGAAGAGGCCCTGGAA
GCTGTCAAAAATGCTACAAATGAGCAAGACCTTGCAAACCGTTTTAAAGAGTTTGGGAAAGAGATGGTG
AAACTTAACTATGTAGCAGCAAGAAGACAACAGGAGCTGAAGGATCCTCACTGTCGGGATGAGATGGCA
GCCGCCGAGGGGCTCTGAAGAAGAATGCCACAATGCTGTACACGGCCTCTCAAGCATTTCTCGCCAC
CCAGATGTCGCCGCTACGAGAGCCAACCGAGATTATGTGTTCAAACAAGTCCAGGAGGCCATCGCCGGC
ATCTCCAATGCTGCTCAAGCTACCTCGCCCACTGACGAAGCCAAGGGCCACACGGGCATCGGCGAGCTG
GCTGCGGCTTTAATGAGTTTGACAATAAGATTATCCTGGACCCCATGACGTTACAGCGAGGCCAGGTTT
CGGCCGTCCTGGAGGAGAGGCTGGAGAGCATCATCAGCGGCGCAGCGCTGATGGCCGACTCCTCCTGC
ACGCGAGACGACCGGCGCGAGAGGATCGTGGCGGAGTGAACGCCGTGCGGCAGGCGCTCCAGGACCTG
CTCAGCGAGTACATGAATAACTGGAAGGAAAGAAAAGGAGATCCTCTCAACATTGCGATTGATAAG
ATGACTAAGAAAACAAGAGATCTAAGGAGACAGCTTCGAAAGCAGTGATGGATCACATCTGACTCT
TTCTTGGAAACCAATGTTCTTTGCTAGTTCTCATTGAGGCTGCAAAGAGCGGAAATGAAAAGAGTG
AAAGAATATGCCAAGTTTTCCGTGAGCATGCCAACAACCTGGTAGAGGTTGCCAATTTGGCCTGTTCC
ATCTCCAACAATGAAGAAGGGTGAATTAAGTTGCGATGCGAGCCACCCAGATTGACAGCCTGTGTCCC
CAGGTCATCAATGCCGCTCTGACACTGGCTGCCCGCCACAGAGCAAAGTTGCTCAGGATAACATGGAC
GTCTTCAAAGACCAGTGGGAGAAGCAGGTCAGGATGTTGACAGAGGCCGTGGATGACATCACCTCAGTG
GATGACTTCTCTGTCTCAGAAAATCACATCTTGGAGGATGTGAACAAGTGTGTGATAGCCCTCAA
GAGGGCGATGTGGACACTCTGGACCGACTGCAGGGGCCATCAGGGGCCGGCAGCTCGAGTCATACAC
ATCATCAATGCTGAGATGGAGAATATGAAGCTGGGTTTATACTGAGAAGTGTGGAAGTACAAAA
TTGCTTTCTGAAACAGTGATGCCACGCTTCGCTGAACAAGTAGAGTTGCCATTGAAGCCCTGAGTGCC
AACGTTTCTCAACCGTTTGAGGAGAATGAGTTTCATCGATGCCTCTCGCCTGGTGTATGATGGCGTTCGG
GACATCAGAAAGGCTGTGCTGATGATCAGGACCCAGAAGAACTAGAGGATGATTCTGACTTTGAGCAG
GAAGATTATGATGTGCGTAGCAGGACAAGTGTTGACAGTGAAGGATGACCAGCTCATTGCAGGGCAGAGC
GCACGGGCCATCATGGCGCAACTACCGCAGGAGGAGAAGGCAAAATAGCTGAGCAGGTGGAGATATTC
CATCAAGAGAAAAGCAAGCTGGATGCAGAAGTGGCCAAATGGGACGACAGCGGCAATGATATCATTGTA
CTGGCCAAAGCAGATGTGTATGATCATGATGAAATGACAGACTTACAAGAGGCAAAGGCCCAATTGAAA
AATACATCTGATGTCATTAATGCTGCCAAGAAAATGGCGAAGCAGGTTCTCGAATGGACAAATAGCT
CGTGTGTGGCTGATCAGTGTCTGATTGATTGAGTGAAGCAGGATTTATTAGCCTACCTTCAACGAATT
GCCTTGTATTGCCATCAGCTTAATATCTGCAGCAAGGTGAAGGCAGAAGTGCAGAATCTGGGAGGAGAG
CTCATTGTGTCAGGGACAGGAGTTCAGAGCACTTTCACTACCTTTTATGAGGTAGATTGTGATGTCATA
GATGGGGCAGGGCTAGTCAACTTTCTACCCACCTCCCAACCTGTGCTGAGGGAGCTCCGATCGGGAGT
GGAAGCAGTGATTCTCCATGCTGGACAGTGCCACATCGCTTATCCAGGCAGCTAAAAACCTGATGAAT
GCTGTTGCTCACGGTGAAGCATCCTATGTGGCCTCAACCAAATACCAGAAGGCTATGGGACAGCA
GCTGTCAACTCACCTGTTGTCTTGAAGATGAAGGCTCCAGAGAAGAAGCCCTTGTGAAGAGAGAA
AAGCCTGAAGAATCCAGACACGAGTTCGACGAGGTTCTCAGAAGAAACACATTTGCGCTGTACAGGCT
TTAAGTGAATCAAAGCAATGGATTCTTC
ACGCGTACGCGGCCGCTCGAG – GFP Tag – GTTTAAAC
```

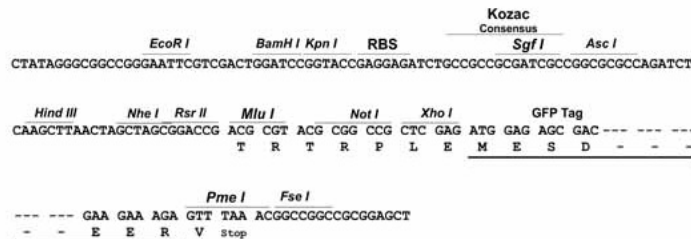
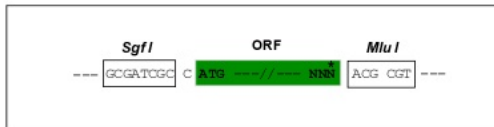
**Protein Sequence:** >Peptide sequence encoded by RG239818  
 Blue=ORF Red=Cloning site Green=Tag(s)

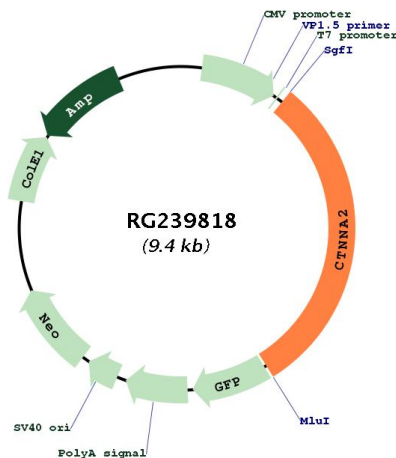
MTSATSPIILKWDPKSLEIRTL TVERLLEPLVTQVTTLVNTSNKGPSGKKKGRSCKAHVLAASVEQATQ  
 NFLEKGEQIAKESQDLKEELVAAVEDVRKQGETMRIASSEFADDPCCSVKRGTMVRAARALL SAVTRLL  
 ILADMADVMRLLSHLKI VEEALEAVKNATNEQDLANRFKEFGKEMVKLNVAARRQELKDPHCRDEMA  
 AARGALKKNATMLYASQAF LRHPDVAATRANRDYVFKQVQEA IAGI SNAQAQTSPTDEAKGHTGIGEL  
 AAALNEFDNKI ILDPMTFSEARFRPSLEERLESI I SGAALMADSSCTRDRRERIVAECNAVQRALQDL  
 LSEYMNTGRKEKGDPLNIAIDKMTKKTRDLRRQLRKAVMDHISDSFLETNVPLLVLEAAKSGNEKEV  
 KEYAQV FREHANKLVEVANLACIS SNNEEGVKLVRMAATQIDSLCPQVINAALTLAARPQSKVAQDNMD  
 VFKDQWEKQVRVLTAVDDITSVDDFLSVSENHILEDVNCVIALQEGVDTLDRTAGAIRGRAARVIH  
 INAEMENYEAGVYTEKLEATKLLSETVMPRFAEQVEVAIEAL SANVPQPFENEVIDASRLVYDGV  
 DIRKAVLMIRTPEELEDSDFEQEDYDVRSTSVQTEDDQLIAGQSARIMAQLPQEEKAKIAEQVEIF  
 HQEKSKLDAEVAKWDDSGNDIIVLAKQCMIMMEMTDFTRGKGPLKNTSDVINAAKKIAEAGSRMDKLA  
 RAVADQCPDSACKQDLLAYLQRIALYCHQLNICKVKAEVQNLGGELIVSGTGVQSTFTTFYEVDCDVI  
 DGGRASQLSTHLPTCAEGAPIGSGSSDSSMLDSATSLIQAAKNLMNAVVLTVKASYVASTKYQVYVGT  
 AVNSPVVSWKMAPEKKPLVKREKPEEFQTRVRRGSQKKHISPVQALSEFKAMDSF  
 TRTRPLEMESDESGLPAMEIECRITGTLNGVEFELVGGGEGTPEQGRMTNKMKSTKGALTFSPYLLSHV  
 MGYGFYHFGTYPYSGYENPFLHAINNGGYNTRIEKYEDGGVLHVFSYRYEAGRVIGDFKVMGTGFPED  
 SVIFTDKIIRSNATVEHLHPMGDNDLDGSFTRTFSLRDGGYSSVVDSDSHMHFSAIHP SILQNGGPMFA  
 FRRVEEDHSNTELGIVEYQHAFKTPDADAGEERV

**Restriction Sites:** SgfI-MluI

**Cloning Scheme:**

Cloning sites used for ORF Shuttling:



**Plasmid Map:**


|                          |  |
|--------------------------|--|
| <b>ACCN:</b>             | NM_001282597   |
| <b>ORF Size:</b>         | 2859 bp  |
| <b>OTI Disclaimer:</b>   | The molecular sequence of this clone aligns with the gene accession number as a point of reference only. However, individual transcript sequences of the same gene can differ through naturally occurring variations (e.g. polymorphisms), each with its own valid existence. This clone is substantially in agreement with the reference, but a complete review of all prevailing variants is recommended prior to use. <a href="#">More info</a> |
| <b>OTI Annotation:</b>   | This clone was engineered to express the complete ORF with an expression tag. Expression varies depending on the nature of the gene.   |
| <b>Components:</b>       | The ORF clone is ion-exchange column purified and shipped in a 2D barcoded Matrix tube containing 10ug of transfection-ready, dried plasmid DNA (reconstitute with 100 ul of water).   |
| <b>RefSeq:</b>           | <a href="#">NM_001282597.3</a>   |
| <b>RefSeq Size:</b>      | 4149 bp  |
| <b>RefSeq ORF:</b>       | 2862 bp  |
| <b>Locus ID:</b>         | 1496   |
| <b>UniProt ID:</b>       | <a href="#">P26232</a>   |
| <b>Cytogenetics:</b>     | 2p12   |
| <b>Protein Families:</b> | Druggable Genome   |
| <b>Protein Pathways:</b> | Adherens junction, Arrhythmogenic right ventricular cardiomyopathy (ARVC), Endometrial cancer, Leukocyte transendothelial migration, Pathways in cancer, Tight junction  |
| <b>MW:</b>               | 105.8 kDa  |

**Gene Summary:**

May function as a linker between cadherin adhesion receptors and the cytoskeleton to regulate cell-cell adhesion and differentiation in the nervous system (By similarity). Required for proper regulation of cortical neuronal migration and neurite growth (PubMed:30013181). It acts as negative regulator of Arp2/3 complex activity and Arp2/3-mediated actin polymerization (PubMed:30013181). It thereby suppresses excessive actin branching which would impair neurite growth and stability (PubMed:30013181). Regulates morphological plasticity of synapses and cerebellar and hippocampal lamination during development. Functions in the control of startle modulation (By similarity).[UniProtKB/Swiss-Prot Function]