

Product datasheet for **RG239815**

POLR1B (NM_001282774) Human Tagged ORF Clone

Product data:

Product Type:	Expression Plasmids
Product Name:	POLR1B (NM_001282774) Human Tagged ORF Clone
Tag:	TurboGFP
Symbol:	POLR1B
Synonyms:	A135; RPA2; RPA135; Rpo1-2; TCS4
Mammalian Cell Selection:	Neomycin
Vector:	pCMV6-AC-GFP (PS100010)
E. coli Selection:	Ampicillin (100 ug/mL)



[View online »](#)

ORF Nucleotide Sequence:

>RG239815 representing NM_001282774.
 Blue=ORF Red=Cloning site Green=Tag(s)

```

GCTCGTTTAGTGAACCGTCAGAATTTTGTAAACGACTCACTATAGGGCGGCCGGGAATTCGTGACTG
GATCCGGTACCGAGGAGATCTGCCGCCCGCATCGCC
ATGGACTCTGGCAGCCGGTGGCGGAACCTGCCAGCGGGCCTAGCCTAAGCACTTGACTGACCCCTCT
TATGGAATCCCGCGGGAACAGCAAAAGGCAGCGTTGCAGGAGCTGACCGGGCGCACGTGGAGTCCCTC
AACTACGCTGTGCACGAGGGTCTCGGCCTCGCGGTGCAGGCTATACCTCCCTTTGAATTTGCTTTCAA
GATGAGCGTATCTCTTTACTATTCTGGATGCTGTTATCAGTCCACCTACAGTTCAAAAAGGACCATC
TGCAAAGAGGCCAATGTTTATCCAGCAGAATGCCGGGGCCGAAGGAGTACCTACCGTGGGAAGTTGACA
GCTGATATCAACTGGCAGTGAATGGAATCTCAAAGGAATCATTAAAGCAGTTTCTGGCTATGTTCCC
ATCATGGTGAATCCAAGCTTTGCAACTTACGTAACCTTCCCCACAAGCCCTCATTGAGCACCATGAG
GAGGCAGAGGAAATGGGGGGCTATTTTAAATCAATGGCATTGAAAAAGTCATCCGAATGTTGATTATG
CCTCGGAGAAATTTCCATTGCAATGATAAGACCAAAATGAAAAACCAGAGGGCCTGGTATACTCAG
TATGGAGTTTCAATGCACTGTGTGAGGGAAGAACATTCCGCTGTCAATATGAACCTCCACTACTGGAA
AATGGCACTGTTATGTTGAACCTTATTTACCGAAAAGAAGTGTCTTTCTCCTTTGGGATTTGCACTT
AAGGCACTTGTCAGCTTTTCTGATTATCAGATCTTTCCAGGAGCTCATCAAAGGAAAAGAGGATGATTCT
TTCTTAGGAACTCTGTTTCTCAGATGTTAAGGATTGTAATGGAAGAGGGTTGTTTCGACAAAAACAG
GTCCTTAACTACCTAGGTGAATGCTTCAGAGTAAACTCAATGTTCTGACTGGTACCCAAATGAGCAA
GCTGCGGAGTTCCTGTTTAAACAGTGCATCTGTATCCACTTGAATCCAATACTGAAAAGTTTTATATG
CTTTGTCTCATGACGCGAAAGCTCTTTGCTTTAGCCAAAGGAGAGTGCATGGAGGACAATCCTGATAGT
TTGGTGAACAGGAAGTCTCACACCGGGTCAGCTCTTCTTATGTTCTGAAGGGGCTACTCCCATTG
ATGGAGCTCCCCACCGATCATACAGTGTGAGAGAGAAAAAGAAATCCTCCCTGGATGGAAGTGTCTTT
ATACCCATGACAGGAAAACCAAGTCTGTACCCAGGATTGTTCTTTTTACCACTCCTTGTAGACTGGTA
CGGCCTGTGCAGAACTTAGCATTGGGCAAAGAAGAGCTAATTGGAATATGGAACAGATCTTCATGAAT
GTCGCTATCTTTGAGGATGAAGTTTTGCTGGAGTTACCACACACCAGGAACTCTTCCACACAGCCTG
CTGAGTGTGATTGCCAATTCATCCCTTCTCTGATCACAACCAGAGTCCACGGAACATGTACCAATGC
CAGATGGGTAAGCAAATATGGGCTTCCACTTCTCACTTATCAAGACCGATCGGATAACAACTGTAT
CGTCTTCAGACTCCTCAGAGTCCCTGGTGGAGACCCTCCATGTATGATTATTATGACATGGATAACTAT
CCAATTTGGGACCAATGCCATCGTTGCTGTGATTTCTTACTGGCTATGATATGGAAGATGCCATGATT
GTGAATAAGGCCCTTTGGGAACGAGGCTTTGCCATGGAAGTGTCTACAAGTCTGAGTTCATAGACCTC
TCTGAAAAAATTAACAAGGAGATAGTAGCCTGGTGTGGGCATCAAACCTGGTGACCCACGCGTTCTG
CAGAAGTTAGATGACGATGGATTGCCGTTTATAGGAGCAAACTGCAGTACGGAGATCCGTATTACAGC
TACCTCAACCTCAACACCGGGGAAAGTTTTGTGATGTAATAAGAGTAAAGAAAATTTGTTGTGGAT
AACATCAAAGTGTGCAGTAAATGACACTGGGAGTGGAAAATTAAGTGTGTTTGCATCACTATGAGAGTG
CCTCGGAACCAACTATCGGAGATAAATTTGCCAGTCCCATGGGAGGAGGATTTTAAAGCAGATTG
TGGCCGGCTGAGGACATGCCTTTACTGAGAGTGGGATGGTCCCAGACATTCTGTTCAATCCCCATGGT
TTTCCATCCCGCATGACCATTGGGATGTTAATTGAGAGTATGGCCGGGAAGTCTGCAGCTTTGCATGGT
CTCTGCCATGATGCTACACCTTTCATCTTCTCAGAGGAGAACTCGGCCTTAGAATACTTTGGTGGATG
TTAAAGGCTGCTGGCTACAATTTCTATGGCACCGAGAGGTTATATAGTGGCATCAGTGGGCTAGAACTG
GAAGCAGACATCTTCATAGGAGTGGTTTATTATCAGCGCTTACGCCATATGGTCTCAGACAAATTTCAA
GTAAGGACAACCTGGAGCCGAGACAGAGTCAACCAACCAGCCTATTGGGGGAAAGAAATGTCCAGGGTGA
ATCCGTTTTGGGAGATGGAACGGGATGCGCTTTAGCTCATGGTACATCTTTTCTCCTTCATGACCGC
CTCTTCAACTGCTCAGATCGTCCGTAGCCATGTGTGTGTAAGTGTGGCAGTTTACTCTCTCCACTG
TTGGAGAAGCCACCCCTTCTTGGTCTGCCATGCGCAACAGAAAAACAACCTGTACTCTGTGTAGTCGC
AGTGACACTATCGATACTGTTTCTGTGCCTTATGTTTTTCGGTATTTTGTAGCTGAACTGGCAGCTATG
AACATCAAAGTGAACCTGGATGTTGTT
AGCGGACCGACGCGTACGCGGCCGCTCGAG - GFP Tag - GTTTAAAC
  
```

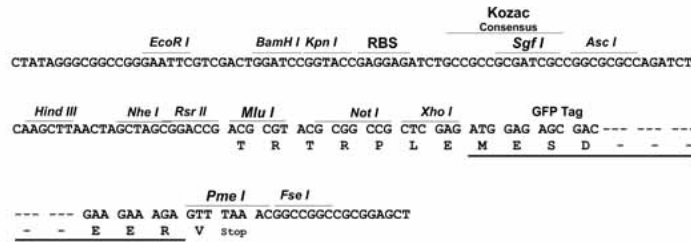
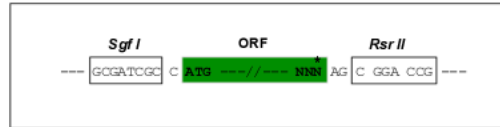
Protein Sequence: >Peptide sequence encoded by RG239815
 Blue=ORF Red=Cloning site Green=Tag(s)

MDPGSRWRNLPSPGSLKHLTDPSYGIPIREQQKALQELTRAHVESFNAYVHEGLGLAVQAIPPFEFAFK
 DERISFTILDAVISPTVPKGTICKEANVYPAECRGRSTYRGLTADINWAVNGISKGIKQFLGYVP
 IMVKSCLNLRNLPQALIEHHEEAEMGGYFIINGIEKVIRMLIMPRRNFPIAMIRPKWKTRGPGYTQ
 YGVSMHCVREEHSAVNMNLHYLENGTVMLNFIYRKELFFLPLGFALKALVSFSDYQIFQELIKGKEDDS
 FLRNSVSQMLRIVMEEGCSTQKQVLNYLGEFCFRVKNVPDWYPNEQAAEFLFNQCICIHLSNTEKFYM
 LCLMTRKLFALAKGECMEDNPDLSVNQEVLTGPQLFLMFLKGSPLMELPTDHTVLRREKIPPWMEVVL
 IPMTGKPSLYPGLFLLFTTPCRLVRPVQNLALGKEELIGTMEQIFMNVAFI FEDEVFAGVTTHQELFPHSL
 LSVIANFIPFSDHNQSPRMYQCQMGKQTMGFPLLTYQDRSDNKLYRLQTPQSPLVRPSMYDYDMDNY
 PIGTNAIVAVISYTYGDMEDAMIVNKASWERGFAHGSVYKSEFIDLSEKIKQGDSSLVFGIKPGDPRVL
 QKLDDDGLPFIGAKLQYGDYYSYLNLTGESFVYYYKSKENCVDNIKVCSNDTGSQKFKCVCITMRV
 PRNPTIGDKFASRHGQKILSRLWPAEDMPFTESGMVPDILFNPHGFPSRMTIGMLIESMAGKSAALHG
 LCHDATPFIFSEENSALEYFGEMLKAAGYNYFYGTERLYSGISGLELEADIFIGVYYYQLRHMVSDKFQ
 VRTTGARDRVTNQPIGGRNVQGGIRFGEMERDALLAHGTSFLLHDRLFNCSDRSAHVVCVKCSLLSPL
 LEKPPPSWSAMRNRKYNCTLCSRSIDTIVSVPYVFRYFAELAAAMNIKVLDDV
 SGPTRTRPLEMESDESGLPAMEIECRITGTLNGVEFELVGGEGTPEQGRMTNKMSTKGALTFSPYLL
 SHVMGYGFYHFGTYPSGYENPFLHAINNGGYTNTRIEKYEDGGVLHVSFSYRYEAGRVIGDFKVMGTGF
 PEDSVIFTDKIIIRSNATVEHLHPMGDNDLDGSFTRTFSLRDGGYSSVVDSSHMHFKSAIHPSILQNGGP
 MFAFRRVEEDHSNTELGIVEYQHAFKTPDADAGEERV

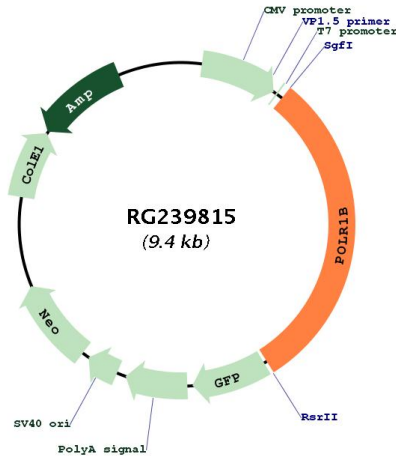
Restriction Sites: SgfI-RsrII

Cloning Scheme:

Cloning sites used for ORF Shuttling:



Plasmid Map:



ACCN: NM_001282774

ORF Size: 2856 bp

OTI Disclaimer: The molecular sequence of this clone aligns with the gene accession number as a point of reference only. However, individual transcript sequences of the same gene can differ through naturally occurring variations (e.g. polymorphisms), each with its own valid existence. This clone is substantially in agreement with the reference, but a complete review of all prevailing variants is recommended prior to use. [More info](#)

OTI Annotation: This clone was engineered to express the complete ORF with an expression tag. Expression varies depending on the nature of the gene.

Components: The ORF clone is ion-exchange column purified and shipped in a 2D barcoded Matrix tube containing 10ug of transfection-ready, dried plasmid DNA (reconstitute with 100 ul of water).

RefSeq: [NM_001282774.2](#)

RefSeq Size: 4878 bp

RefSeq ORF: 2859 bp

Locus ID: 84172

UniProt ID: [Q9H9Y6](#)

Cytogenetics: 2q14.1

Protein Families: Transcription Factors

Protein Pathways: Metabolic pathways, Purine metabolism, Pyrimidine metabolism, RNA polymerase

MW: 108.3 kDa

Gene Summary:

Eukaryotic RNA polymerase I (pol I) is responsible for the transcription of ribosomal RNA (rRNA) genes and production of rRNA, the primary component of ribosomes. Pol I is a multisubunit enzyme composed of 6 to 14 polypeptides, depending on the species. Most of the mass of the pol I complex derives from the 2 largest subunits, Rpa1 and Rpa2 in yeast. POLR1B is homologous to Rpa2 (Seither and Grummt, 1996 [PubMed 8921381]).[supplied by OMIM, Mar 2008]