

Product datasheet for **RG239814**

SCP1 (SYCP1) (NM_001282542) Human Tagged ORF Clone

Product data:

Product Type:	Expression Plasmids
Product Name:	SCP1 (SYCP1) (NM_001282542) Human Tagged ORF Clone
Tag:	TurboGFP
Symbol:	SCP1
Synonyms:	CT8; HOM-TES-14; SCP-1; SCP1
Mammalian Cell Selection:	Neomycin
Vector:	pCMV6-AC-GFP (PS100010)
E. coli Selection:	Ampicillin (100 ug/mL)



[View online »](#)

ORF Nucleotide Sequence:

>RG239814 representing NM_001282542.
 Blue=ORF Red=Cloning site Green=Tag(s)

```
GCTCGTTTAGTGAACCGTCAGAATTTTGTAAACGACTCACTATAGGGCGGCCGGGAATTCGTGCGACTG
GATCCGGTACCGAGGAGATCTGCCGCCACGATCGCC
ATGGAAAAGCAAAAGCCCTTTGCATTGTTTCGTACCACCGAGATCAAGCAGCAGTCAGGTGTCTCGCGTG
AAACCTCAGACCCTGGGAGGCGATTCCACTTTTCAAGAGTTTCAACAAATGTAAGTGAAGATGATTTT
GAGTTTCCATTTGCAAAGACTAATCTCTCCAAAAATGGGAAAAACATTGATTCAGATCCTGCTTTACAA
AAAGTTAATTTCTTGCCCGTGCTTGAGCAGGTTGGTAATTCTGACTGTCACTATCAGGAAGGACTAAAA
GACTCTGATTTGGAGAATTGAGAGGATTGAGCAGAGTGTATTCAAACTGTATAAGGAGGCTGAAAAG
ATAAAAAATGGAAAGTAAAGTACAGAAGCTGAACTGAGACAGAAAAGAAAGTAAAGTTGCAAGAAAACAGA
AAGATAATTGAAGCACAGCGAAAAGCCATTGAGAACTGCAATTTGAAAATGAAAAGTAAAGTTTGAAA
TTAGAAGAAGGAATACAAGAAAAAAAGATTTAATAAAAGAGAATAATGCCACAAGGCATTTATGTAAT
CTACTCAAAGAACTGTGCTAGATCTGCAGAAAAGACAAAGAAATATGAATATGAACGGGAAGAAAACC
AGGCAAGTTTATATGGATCTAAATAAACATTGAGAAAATGATAACAGCTTTTGAGGAACTTCGTGTG
CAAGCTGAGAATTCAGACTGAAAATGCATTTTAAAGTTAAAGGAAGATTATGAAAAATCCAACACCTT
GAACAAGAATACAAGAAGGAAAATAAATGACAAGGAAAAGCAGGTATCACTACTATTGATCCAATCACT
GAGAAAAGAAAAATAAATGAAAGATTTAACATTTCTGCTAGAGGAAATCCAGAGATAAAGTTAATCAATTA
GAGGAAAAGACAAAATTACAGAGTGAAAACCTAAAACAATCAATTGAGAAAACAGCATCATTTGACTAAA
GAACTAGAAGATATTAAGTGTCAATTAACAAGAAGTGTGAGTACTCAAAAGGCTTTAGAGGAAGATTTA
CAGATAGCAACAAAAACAATTTGTCAGCTAACTGAAGAAAAGAAAACCAATGGAAGAATCTAATAAA
GCTAGAGCTGCTCATTGTTGTGGTTACTGAATTTGAACTACTGTCTGCAGCTTGAAGAATTTATG
AGAACAGAACAGCAAAGATTGGAAAAAAATGAAGATCAATTGAAAATCTTACCATGGAGCTTCAAAG
AAATCAAGTGAGCTGGAAGAGATGACTAAGCTTACAAATAACAAGAAAGTGAAGCTTGAAGAATTGAAA
AAAGTCTTGGGAGAAAAGGAAACACTTTTATATGAAAATAAACAATTTGAGAAGATTGCTGAAGAATTA
AAAGGAACAGAACAGAATAAATGGTCTTCTCCAAGCCAGAGAGAAAAGTACATGATTTGAAAATA
CAGTTAACTGCCATTACCACAAGTGAACAGTATTATTCAAAAGAGGTTAAAGATCTAAAACTGAGCTT
GAAAACGAGAAGCTTAAAGAACTGAATTAACCTCACACTGCAACAAGCTTTCACTAGAAAACAAAGAG
CTCACACAGGAAACAAGTGATATGACCCTAGAACTCAAGAATCAGCAAGAAGATATTAATAAACAAA
AAGCAAGAAGAAAGGATGTTGAAACAAAAGAAAATCTTCAAGAAACAGAAACCAATTAAGAAATGAA
CTAGAATATGTGAGAGAAGAGCTAAAACAGAAAAGAGATGAAGTTAAATGTAATTTGGACAAGAGTGAA
GAAAATTTGTAACAATTTAAGGAAACAAGTTGAAAATAAAAACAAGTATATTGAAGAATTCAGCAGGAG
AATAAGGCCTTGAAAAAAAAAAGGTACAGCAGAAAAGCAAGCAACTGAATGTTTATGAGATAAAGGTCAAT
AAATTAGAGTTAGAATAAGAAAGTGCCAAACAGAAATTTGGAGAAATCACAGACACCTATCAGAAAAGAA
ATTGAGGACAAAAGATATCAGAAGAAAATCTTTTGAAGAGGTTGAGAAAAGCAAAAGTAAATAGCTGAT
GAAGCAGTAAAATTACAGAAAGAAATGATAAGCGATGTCAACATAAAATAGCTGAAATGGTAGCACTT
ATGGAAAACATAAGCACCAATATGATAAGATCATTGAAGAAAGAGACTCAGAATTAGGACTTTATAAG
AGCAAAGAACAAGAACAGTCATCACTGAGAGCATCTTTGGAAAACCTCAAAGAGAGGCAAAAGAAAAC
ACAGTACTCTTAAAGAAAAAAAAAAGACAAGAAAACACAAACATTTTATTGGAAACACCTGAAATTTAT
TGGAAATTTGATTCTAAAGCAGTTCCTTCAAACTGTATCTCGAAATTCACATCAGTTGATCATGGC
ATATCCAAGATAAAAAGAGACTATCTGTGGACATCTGCCAAAATACTTTATCTACACCATTGCCAAAG
GCATATACAGTGAAGACACCAACAAAACAAAACCTACAGCAAAGAGAAAACCTTGAATATACCCATTGAA
GAAAGTAAAAAAAAAGAGAAAAATGGCCTTTGAATTTGATTAATTCAGATAGTTCAGAACTACTGAT
CTTTTGGCATGGTTTTCAGAGAAGAGACATTGAAAACACTGTATAGGAACAATAATCCACCAGCTTCT
CATCTTTGTGTCAAAACACCAAAAAGGCCCTTATCTCTAACCAACCCCTGGATCTACACTGAAGTTT
GGAGCTATAAGAAAAATGCGGGAGGACCGTTGGGCTGTAATTGCTAAAATGGATAGAAAAAAAACATA
AAAGAAGCTGAAAAGTTATTTGTT
ACGCGTACGCGGCCGCTCGAG - GFP Tag - GTTTAAAC
```

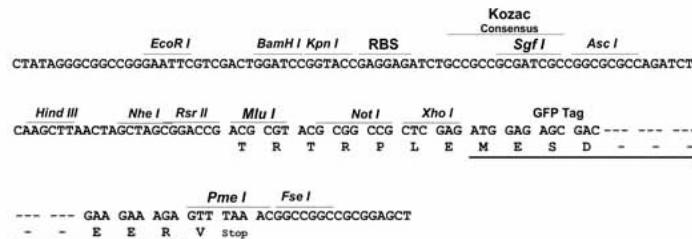
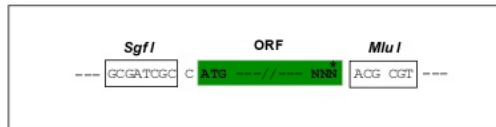
Protein Sequence: >Peptide sequence encoded by RG239814
 Blue=ORF Red=Cloning site Green=Tag(s)

MEKQKPFALFVPPRSSSSQVSAVKPQTLGGDSTFFKSFNKCTEDDFEFPFAKTNLSKNGENIDSDPALQ
 KVNFLPVLQVGNSDCHYQEGLKDSLENSEGLSRVYSKLYKEAEKIKKWKVSTEAE LRQKESKLQENR
 KIIIEAQRKAIQELQFGNEKVSCLKLEEGIQENKDLIKENNATRHLCNLLKETCARSAEKTKKYEREE
 RQVYMDLNNNIEKMITAFEELRVQAENSRLMHFKLKEDYEKIQHLEQEYKKEINDKEKQVSLLLIQIT
 EKENMKDLTFLLEESRDKNVQLEEKTKLQSENKQSIKQHHLTKELEDIKVSLQRSVSTQKALEEDL
 QIATKTIQCLTEEKETQMEESENKARAAHSFVVTEFETTVCSLEELLRTEQQRLEKNEDQLKILTMELQK
 KSSELEEMTKLTNNKEVELEELKKVLGEKETLLYENKQFEKIAEELKGTQEQLIGLLQAREKEVHDLEI
 QLTAITTSQYYSKEVKDLKTELENEKLNKTEL TSHCNKLSLENKELTQETSDMTLELKNQQEDINNKK
 KQEERMLKQIENLQETETQLRNELEYVREELKQKRDEVKCKLDKSEENCNLRKQVENKNKYIEELQOE
 NKALKKKGTAESKQLNVYEIKVNKLELELES AKQKFG EITDTYQKEIEDKKISEENLLEEVEKAKVIAD
 EAVKLQKEIDKRCQHKAEMVALMEKHKHQYDKIIEERDSELGLYKSKEQEQSSLRASLEKLRKREKEN
 TATLKEKKDKKTQTFLEETPEIYWKLDSKAVPSQTVSRNFTSVDHGISKDKRDYLTWSAKNTLSTPLPK
 AYT VKTPTKPKLQORENLNPIEESKKKRKMAFEFDINSDSETTDLLSMVSEETLKTLYRNNPPAS
 HLCVKTKPKKAPSSLTPGSTLKFGAIRKMRDRWAVIAKMDRKKKLKEAEKLFV
 TRTRPLEMESDESGLPAMEIECRITGTLNGVEFELVGGGEGTPEQGRMTNKMSTKGALTFSPYLLSHV
 MGYGFYHFGTYPYSGYENPFLHAINNGGYNTRIEKYEDGGVLHVSFSYRYEAGRVIGDFKVMGTGFPED
 SVIFTDKIIRSNATVEHLHPMGDNDLDGSFTRTFSLRDGGYSSVVDSDSHMHFKSAIHPSILQNGGPMFA
 FRRVEEDHSNTELGIVEYQHAFKTPDADAGEERV

Restriction Sites: SgfI-MluI

Cloning Scheme:

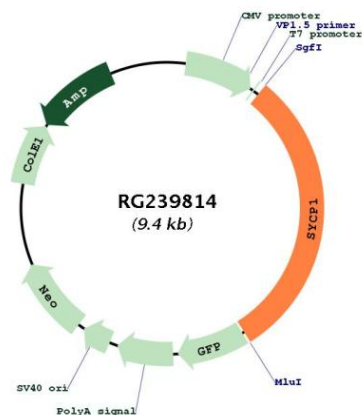
Cloning sites used for ORF Shutting:



ACCN: NM_001282542

ORF Size:	2853 bp
OTI Disclaimer:	The molecular sequence of this clone aligns with the gene accession number as a point of reference only. However, individual transcript sequences of the same gene can differ through naturally occurring variations (e.g. polymorphisms), each with its own valid existence. This clone is substantially in agreement with the reference, but a complete review of all prevailing variants is recommended prior to use. More info
OTI Annotation:	This clone was engineered to express the complete ORF with an expression tag. Expression varies depending on the nature of the gene.
Components:	The ORF clone is ion-exchange column purified and shipped in a 2D barcoded Matrix tube containing 10ug of transfection-ready, dried plasmid DNA (reconstitute with 100 ul of water).
RefSeq:	NM_001282542.1 , NP_001269471.1
RefSeq Size:	3457 bp
RefSeq ORF:	2856 bp
Locus ID:	6847
Cytogenetics:	1p13.2
MW:	111.7 kDa
Gene Summary:	Major component of the transverse filaments of synaptonemal complexes, formed between homologous chromosomes during meiotic prophase. Required for normal assembly of the central element of the synaptonemal complexes. Required for normal centromere pairing during meiosis. Required for normal meiotic chromosome synapsis during oocyte and spermatocyte development and for normal male and female fertility.[UniProtKB/Swiss-Prot Function]

Product images:



Circular map for RG239814