

## Product datasheet for **RG239811**

### **AASDH (NM\_001286669) Human Tagged ORF Clone**

#### **Product data:**

Product Type:	Expression Plasmids
Product Name:	AASDH (NM_001286669) Human Tagged ORF Clone
Tag:	TurboGFP
Symbol:	AASDH
Synonyms:	ACSF4; LYS2; NRPS998; NRPS1098
Mammalian Cell Selection:	Neomycin
Vector:	pCMV6-AC-GFP (PS100010)
E. coli Selection:	Ampicillin (100 ug/mL)



[View online »](#)

**ORF Nucleotide Sequence:**

>RG239811 representing NM\_001286669.  
 Blue=ORF Red=Cloning site Green=Tag(s)

```
GCTCGTTAGTGAACCGTCAGAATTTTGTAAACGACTCACTATAGGGCGGCCGGGAATTCGTGACTG
GATCCGGTACCGAGGAGATCTGCCGCCCGCATCGCC
ATGCTAAATGATGAAAAAGAGAAATATGAAAAAGAAAAAATAAAAAGCATAAGTTCTGAGCATGTCAAT
GAAGAAAAAGCAGAAGAACACATGGATCTGAGGCTAAAGCATTGCTTAGCCTATGTTCTACATACATCA
GGGACTACAGGGATACCGAAGATTGTCAGAGTGCCTCATAAGTGTATAGTACCAAATATCCAGCATTTT
CGGGTACTTTTTGACATCACACAAGAAGATGTTTTGTTTCTGGCTCACCTCTGACCTTCGATCCTTCT
GTTGTGAAAAATTTCTTCTATCAAGTGGTGCCTCTCTGCTTATTGTACCAACTCCGTCAAGTTG
CTCCCATCAAAATAGCCAGCGTTCTCTTTCCCATCATAGAGTGACTGTTTGCAGGCAACACCAACA
TTGCTTAGAAGATTTGGATCTCAGCTTATCAAGTCAACTGTTTGTGAGCCACTACTTCTTTCGAGTA
TTAGCCCTTGGTGGTGAAGCGTTCCATCATTGACAGTCTCAGAAGCTGGAGAGGAGAAGGCAATAAA
ACACAAAATTTAATGTTATGGTATCACAGAGGTATCAAGTTGGGCGACCATTTATAGGATTCAGAG
AAGACTCTTAACCTACTCTCAAATGTGAATTGCCTGTACAACCTGGGATTCCACTTCTTGAACAGTA
GTTGAAGTCAGAGATACTAATGGCTTCACAATTCAGGAAGGCAGTGGCCAAGTATTTTTAGTGGCAGA
AACAGAGTGTGTTTTCTGATGATGAAGTGACAGTACCCTTGGCACAATGCGAGCTACAGGAGACTTT
GTGACTGTGAAAGATGGAGAGATTTTTTTTTGGGACGAAAAGACAGTCAGATCAAACGTCATGGCAAA
CGTCTTAACATTGAACCTGTGCAACAGGTTGCTGAAGAGCTTCAGCAAGTGGAGTCTTGTGCAGTTACA
TGGTATAATCAGGAAAAATTAATCTCTTCATGGTGTCTAAAGATGCTTCAGTAAAAAATACATCTTT
AAAGAAGTGCAGAAATATCTTCAAGTCATGCAGTCCCGGATGAGCTTGATTGATCGACTCTTACCA
TTTACATCCCACGGCAAAATGATGTTTCTGAGTTAAACAAGATATTTAAACTACATAAACTTGAAG
TCTGAGAATAAGCTCAGTGGGAAAGAGGACCTTTGGGAAAAATTACAGTATTTGTGGAAGTCTACTTG
AATCTCCCAGAAGATCTTTTGGGGTTCCTGATGAGTCACTCTTCTTAAATAGTGGTGGAGATTCTTAA
AAGTCCATCCGGCTCCTCAGTGAGATTGAAAACTTGTGGTACATCAGTACCTGGGCTTCTGAAATT
ATTCTCAGCAGTTCATTTTAGAGATTTATAATCACATCCTTCAAACAGTGGTCCAGATGAAGATGTG
ACATTCAGGAAGAGTTGTGCCACAAAAGGAACTCAGCGACATTAATCAAGAGGAAGCCAGTGGAAACA
TCTTTACATCAGAAAGCCATCATGACTTTCCTTGGCACAATGAGATTAATGCTTTTGTGACTGAGC
AGAGGGAGTCAAATTTTGTCTCTGAATTCCTAGGTTTTAACAAAGTTAGGACATTGCTCTTCAGCC
TGTCTTCTGACTCAGTTTACAGACCAACATTCAAAATTTGAAAGGCTTAAATTCTCCAGTCTTATT
GGGAAGTCAAAGATCCATCCTGTGTTGCAAAAGTTTCTGAAGAGGGGAAACCTGCGATAGGGACTCAG
AAAATGGAGTTACATGTGAGGTGGAGGTGAGACACAGGCAAAATGTGTAGATGCTTACCCTGTTGTA
ATACCCACTTTTGATAAGTCATCTACAACGTGTACATTGGTTCCTTCTCATAGAATGAAGGCAGTT
GACTTTTACTCTGGGAAGGTAATGGGAACAGATTTTGGGAGATCGAATTGAATCCTCAGCATGTGTA
TCTAAGTGTGAAACTTTATTGTGGTGGCTGTTATAATGGATTAGTTTATGTTCTGAAAAGTAATAGT
GGAGAAAAACTGGATGTTTACTACTGAAGATGCTGTCAAAGCTCGGCAACCATGGATCCAACCACA
GGACTCATTTACATTGGATCTCATGACCAGCACGCATATGCTTTAGATATTTATAGAAAGAAGTGTGT
TGGAAAGTCAAATGTGGAGGAAGTCTTTTCTCTCCGTGTTGAACTGATCCACATCATTGTAT
TTTGCTACATTGGGAGGACTTTTACTGGCTGTAATCCTGCTACTGGGAACGTTATTTGAAACATTCC
TGTGAAAACCCTCTTCTCTTCCACAAATGTTGCTCACAGTATATTTGATTGGCTGTGTAGATGGG
AATTTACTCTGCTTACTCACTTTGAGAACAGGTTTGGCAGTCTCTACCAGTGACCAATCTTTTCA
TCCCGTGTACCTCACCATCAGAGCAAAAAATATTTTTGGTTCCCATGATTGCTTTATCTACTGTTGT
AACATGAAAGGTCACCTGCAGTGGAAATTTGAACTACTTCAAGGGTCTATGCAACACCGTTTGTTC
CATAACTACAATGGCAGCAATGAAATGTTGCTGGCAGCAGCATCTACTGATGGGAAAGTGTGGATCTTG
GAATCTCAGAGTGGACAATTGCAAAGTGTATGAACTTCTGGAGAAGTCTTCTCTTCTCTGTGGTC
CTGGAATCAATGCTCATTATTGGGTGTAGAGATAATTATGTTTATTGCTGGATTATTGGGTGGCAAT
CAAAA
ACGCGTACGCGGCCGCTCGAG - GFP Tag - GTTTAAAC
```

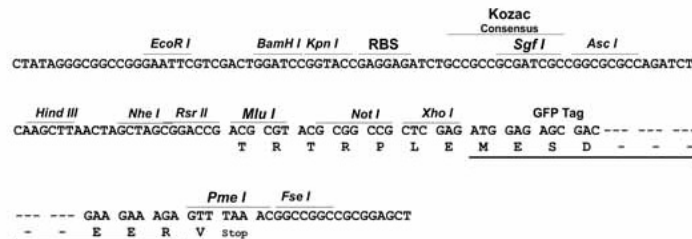
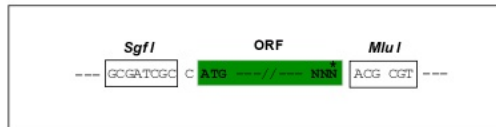
**Protein Sequence:** >Peptide sequence encoded by RG239811  
 Blue=ORF Red=Cloning site Green=Tag(s)

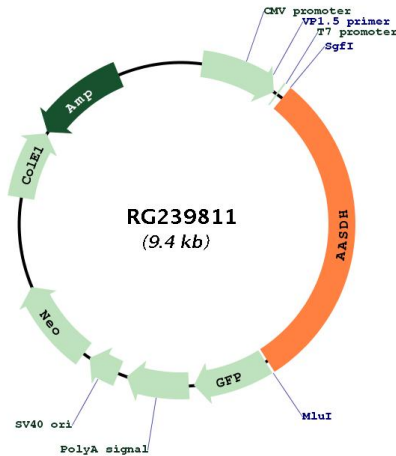
MLNDGKEKYEKEIKSISSEHVNEEKAEHMDLRLKHCLAYVLHTSGTTGIPKIVRPHKCIVPNIQHF  
 RVLFDITQEDVLFASPLTFDPSVVEIFLALSSGASLLIVPTSVKLLPSKLASVLFSHHRVTVLQATPT  
 LLRRFGSQLIKSTVLSATTSRLVLAALGGEAFPSLTVLRSWRGEGNKTQIFNVEYGITVSSWATIYRIPE  
 KTLNSTLKCCELPVQLGFPLLTGVVEVRDINGFTIQEGSQVFLGGRNRVCFLDDEVTVPLGTMTRATGDF  
 VTVKDGEIFFLGRKDSQIKRHGKRLNIELVQQVAEELQQVECAVWYWNQEKLLIFMVSKDASVKEYIF  
 KELQKYLPSHAVPDELVLIDSLPFTSHGKIDVSELNKIYLYNINLXSENKLSGKEDLWEKLQYLWKSTL  
 NLPEDLLRVPDESFLNSGGDSLKIRLLSEIEKLVGTSVPGLEIILSSSILEIYNHILQTVVPDEDEV  
 TFRKSCATKRKLSLQEEASGTSLHQKAIMFTTCHNEINAFVLSRGSQILSLNSTRFLTKLGHCSSA  
 CPSDSVSTQNIQNLKGLNSPVLIGKSKDPSCVAKVSEEGKPAIGTQKMEHLHVRWSDTGKCVASPLVV  
 IPTFDKSSSTTVYIGSHSRMKAVDFYSGKVKWEQILGDRIESSACVSKCGNFIVVGCYNGLYVVLKSN  
 GEKYWMFTTEDAVKSSATMDPTTGLIYIGSHDQHAYALDIYRKKCVWKSCKGGTVFSSPCLNLIPHHLY  
 FATLGGLLAVNPATGNVIWKHSCGKPLFSSPQCCSQYICIGVDGNLLCFTHFGEQVWFSTSGPIFS  
 SPCTSPSEQKIFFGSHDCFYCCNMKGHLQWKFETT SRVYATPF AFHNYNGSNEMLLAAASTDGKVVIL  
 ESQSQQLQSVYELPGEVFSPPVLESMLIIGCRDNYVYCLDLLGGNQK  
 TRTRPLEMESDESGLPAMEIECRITGTLNGVEFELVGGEGTPEQGRMTNKMSTKGALTFSPYLLSHV  
 MGYGFYHFGTYPYSGYENPFLHAINNGGYNTRIEKYEDGGVLHVFSYRYEAGRVIGDFKVMGTGFPED  
 SVIFTDKIIRS NATVEHLHPMGDNDLDGSFTRTFSLRDGGYSSVVD SHMHFKSAIHP SILQNGGPMFA  
 FRRVEEDHSNTELGIVEYQHAFKTPDADAGEERV

**Restriction Sites:** SgfI-MluI

**Cloning Scheme:**

Cloning sites used for ORF Shutting:



**Plasmid Map:**


**ACCN:** NM\_001286669

**ORF Size:** 2835 bp

**OTI Disclaimer:** The molecular sequence of this clone aligns with the gene accession number as a point of reference only. However, individual transcript sequences of the same gene can differ through naturally occurring variations (e.g. polymorphisms), each with its own valid existence. This clone is substantially in agreement with the reference, but a complete review of all prevailing variants is recommended prior to use. [More info](#)

**OTI Annotation:** This clone was engineered to express the complete ORF with an expression tag. Expression varies depending on the nature of the gene.

**Components:** The ORF clone is ion-exchange column purified and shipped in a 2D barcoded Matrix tube containing 10ug of transfection-ready, dried plasmid DNA (reconstitute with 100 ul of water).

**RefSeq:** [NM\\_001286669.1](#), [NP\\_001273598.1](#)

**RefSeq Size:** 3493 bp

**RefSeq ORF:** 2838 bp

**Locus ID:** 132949

**UniProt ID:** [Q4L235](#)

**Cytogenetics:** 4q12

**Protein Pathways:** Lysine biosynthesis, Lysine degradation, Metabolic pathways

**MW:** 105.4 kDa

**Gene Summary:** This gene encodes a member of the non-ribosome peptide syntesase (NRPS) enzyme family. The encoded protein contains an AMP-binding domain, PP-binding (phosphopantetheine, or pantetheine 4'phosphate-binding) domain and the Pyrrolo-quinoline quinon (PQQ) binding domain. The protein is expressed in several adult tissues. [provided by RefSeq, Apr 2016]