

## Product datasheet for **RG239809**

### NFAT2 (NFATC1) (NM\_001278669) Human Tagged ORF Clone

#### Product data:

Product Type:	Expression Plasmids
Product Name:	NFAT2 (NFATC1) (NM_001278669) Human Tagged ORF Clone
Tag:	TurboGFP
Symbol:	NFAT2
Synonyms:	NF-ATC; NF-ATc1.2; NFAT2; NFATc
Mammalian Cell Selection:	Neomycin
Vector:	pCMV6-AC-GFP (PS100010)
E. coli Selection:	Ampicillin (100 ug/mL)



[View online »](#)

**ORF Nucleotide Sequence:**

>RG239809 representing NM\_001278669.  
 Blue=ORF Red=Cloning site Green=Tag(s)

```

GCTCGTTTAGTGAACCGTCAGAATTTTGTAAACGACTCACTATAGGGCGGCCGGGAATTCGTGCACTG
GATCCGGTACCGAGGAGATCTGCCGCCCGCATCGCC
ATGCCAAGCACCAGCTTTCCAGTCCCTTCCAAGTTTCCACTTGGCCCTGCGGCTGCGGTCTTCGGGAGA
GGAGAAACTTTGGGGCCCGCGCCCGCGCCGCGCCACCATGAAGTCAGCGGAGGAAGAACAATATGGC
TATGCATCTCCAACGTACGCCCGCCCTGCCGCTCCCCACGGCGCACTCCACCCTGCCGCCCGCTGC
CACAACCTTCAGACCTCCACACCGGGCATCATCCCGCGCGGATCACCCCTCGGGGTACGGAGCAGCT
TTGGACGGTGGGCCCGGGGCTACTTCTCTCTCCGGCCACACCAGGCCTGATGGGGCCCTGCCCTG
GAGAGTCTCGCATCGAGATAACCTCGTCTTGGGCTGTACCACAACAATAACCAGTTTTTCCACGAT
GTGGAGGTGGAAGACGTCTCCCTAGCTCAAACGGTCCCCTCCACGGCCACGCTGAGTCTGCCAGC
CTGGAGGCTACAGAGACCCCTCGTGCCTGAGCCCGCCAGCAGCTGTCTCCCGAGCTGCAACTCA
GAGGCCTCTCTACGAGTCCAACACTACTGTACCCGTACGCGTCCCCCAGAGCTGCCATGGCAGTCT
CCCTGCGTGTCTCCAAGACCACGGACCCCGAGGAGGGCTTTCCCGCGGGCTGGGGCCCTGCACACTG
CTGGGTTCCCGCGGCACTCCCCCTCCACTCGCCCCGCGCCAGCGTCACTGAGGAGAGCTGGCTGGGT
GCCCGCTCTCCAGACCCGCGTCCCCTTGAACAAGAGGAAGTACAGCCTCAACGGCCGGCAGCCGCC
TACTACCCCACTCGCCACGCCGTCCCCGCACGGCTCCCCGCGGGTCAAGCTGACCGACTCG
TGGTTGGGCAACACCACCAGTACACCAGCTCGGCCATCGTGCCGCAACACGGCTGACCCAGCAGC
AGCAGCTGGACCTGGGAGATGGCGTCCCTGTCAAGTCCCGCAAGACCACCTGGAGCAGCCGCCCTCA
GTGGCGCTCAAGTGGAGCCCGTGGGGAGGACCTGGGACGCCCCCGCCCGGGGACTTCGCGCCC
GAAGACTACTCTTTCCAGCACATCAGGAAGGGCGGCTTCTGCGACCAGTACCTGGCGGTGCCGAG
CACCCCTACCAGTGGGCGAAGCCCAAGCCCTGTCCCCTACGTCTACATGAGCCGACCTGCCGCC
CTGGACTGGCAGCTGCCGTCCACTCAGGCCCGTATGAGCTTCGGATTGAGGTGCAGCCCAAGTCCAC
CACCGAGCCCACTACGAGACGGAGGCGAGCCGGGGGCGTGAAGGCGTGGCCGGAGGACACCCATC
GTGCACTGCATGGTACTTGGAGAATGAGCCGCTGATGCTGCAGCTTTTATTGGGACGGCGGACGAC
CGCCTGTGCGCCCGCACGCTTCTACCAGGTGCACCGCATCACAGGGAAGACCGTGTCCACCACCAGC
CACGAGGCCATCTCTCCAACACCAAAGTCTGGAGATCCCACTCCTGCCGAGAACAGCATGCGAGCC
GTCATTGACTGTCCGGAATCTGAAACTCAGAACTCCGACATTGAACTTCGGAAGGAGAGACGGAC
ATCGGGAGGAAGAACACACGGGTACGGTGGTGTCCGCGTTCAGTCCCACAACCCAGCGCCGACG
CTGTCCCTGCAGGTGGCCTCAACCCCATCGAATGCTCCAGCGCTCAGCTCAGGAGCTGCCTCTGGTG
GAGAAGCAGAGCACGGACAGCTATCCGGTCTGGGCGGGAAGAAGATGGTCTGTCTGGCCACAATTC
CTGCAGGACTCCAAGGTATTTTCTGGAGAAAGCCAGATGGCCACCATGTCTGGGAGATGGAAGCG
AAAAGTACCAGGACCTGTGCAAGCCGAATTTCTGTTGGTTGAGATCCCGCCATTTTCGGAATCAGAGG
ATAACCAGCCCGTTCACGTGAGTTTCTACGTCTGCAACGGGAAGAGAAAGCGAAGCCAGTACCAGCGT
TTCACCTACCTTCCCGCAACGTTCCAATTATAAAAACAGAACCCTGATGATTATGAGCTGTCTCA
ACCTGTGGACCGGTGAGCCAGGGGTTAAGTCTCTCCCAAGACCACTACAGCCAGCAGCTCGCGATG
CCACCCGACCCAGCTCCTGCCTCGTGGCCGGCTTCCCGCCCTGTCCGAGAGAAGCACCCCTGATGCCA
CGGGCCCTGGCGTGGCCCCAAGTCCACGACCTTTCTCCCGTGCCTACACCAAGGGCGTTGCCAGC
CCGGGCCACTGTACCTCGGACTCCCGCAGCCGGCCGGAGAGGCCCCCGCGTCCAGGACGTGCCAGG
CCAGTGGCCACGACCCCGGCTCGCCCGGCGAGCCACCCCGGCCCTGCTGCCACAGCAGGTGAGTGCG
CCTCCAAGCAGTAGTGGCCCCCTGGTCTCGAACACTCGCTCTGCCCCAGCAGCCCTCTCTCCACTC
CCGCTGCCACCAAGAGCCGACCTGCCTGCAGCCCTGCAGCCAGCGTGCCTGCCCGCCGACGGCCGC
CCGAGCAGCTGCCGTCCAGGTCCGAGGACGAGTCTCCGACTGCCGGCCACGGTGTGCCAGAG
GTGCATGAGGACGGTAGTCCTAATTTGGCCCTATTCTGTAACGGTCAAGCGAGAGCCTGAAGAGTTG
GACCAGTTGTACCTGGATGACGTAATGAAATAATACGAATGACCTCTCCAGCAGGACCCCACTCC
CTCGAG – GFP Tag – GTTTAAAC
  
```

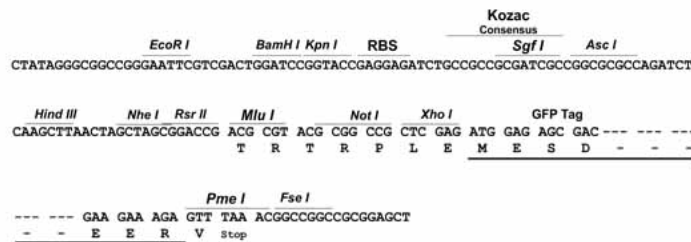
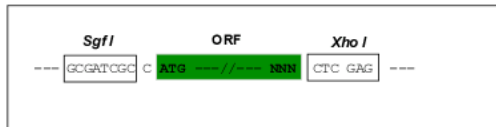
**Protein Sequence:** >Peptide sequence encoded by RG239809  
 Blue=ORF Red=Cloning site Green=Tag(s)

MPSTSFVPVSKFPLGAAA VFRGETLGPAPRAGGTMKSAEEEHYGYASSNVSPALPLPTAHSTLPAPC  
 HNLQTSTPGIIPPADHPSGYGAALDGGPAGYFLSSGHTRPDGAPALESPRIEITSCLGLYHNNNQFFHD  
 VEVEDLVPSSKRSPSTATLSLPSLEAYRDPSCSPASSLSSRSCNSEASSYESNYSYPYASPQTSWPQS  
 PCVSPKTTDPEEGFPRGLGACTLLGSPRHSPSTSPRASVTEESWLGARSSRPASPCNKRYSLNGRQPP  
 YSPHHSPTSPHGSPRVSVTDDSWLGNTTQYTSSAIVAAINALTTDSSLDLGDGVPVKSRKTTLEQPPS  
 VALKVEPVGEDLGSPPPADFAPEYSSFQHIRKGGFCQYLA VPQHPYQWAKPKPLSPTSYMSPTLPA  
 LDWQLPSHSGPYELRIEVQPKSHHRAHYETEGSRGAVKASAGGHPVQLHGYLENEPLMLQLFIGTADD  
 RLLRPHAFYQVHRITGKTVSTTSHEAILSNTKVIPLLPENSMRAVIDCAGILKLRNSDIELRKGETD  
 IGRKNTRVRLVFRVHVPQSGRTLSQLQVANSPIECSQSAQELPLVEKQSTDSYPVVGKKMVLSGHNF  
 LQDSKVI FVEKAPDGHVWEMEAKTDRDLCKPNSLVVEIPFRNQRTISPVHVSFYVCNGKRKRSQYQR  
 FTYLPANVPIIKTEPTDDYEPAPTCGPVSQGLSPLPRPYYSQQLAMPDPSSSCLVAGFPQCRSTLMP  
 AAPGVSPKLDLSPAAYTKGVASPGHCHLGLPQPAGEAPAVQDVPRPVATHPGSPGQPPALLPQQVSA  
 PPSSSCPGLHSLCPSSPSPPLPPATQEPTCLQPCSPACPPATGRPQHL PSTVRRDESPTAGPRLLE  
 VHEDGSPNLAPIPVTVKREPEELDQLYLDVNEIIRNDLSSTSTHS  
**LE**MESDESGLPAMEIECRITGTLNGVEFELVGGEGTPEQGRMTNKMKSTKGALTFSPYLLSHVMGYGF  
 YHFGTYPYSGYENPFLHAINNGGYNTRIEKYEDGGVLHVSFSYRYEAGRVIGDFKVMGTGFPEDSVIFT  
 DKIIIRSNATVEHLHPMGDNDLDGSFTRTFSLRDGGYSSVVD SHMHFKSAIHPSILQNGGPMFAFRRVE  
 EDHSNTELGIVEYQHAFKTPDADAGEERV

**Restriction Sites:** SgfI-XhoI

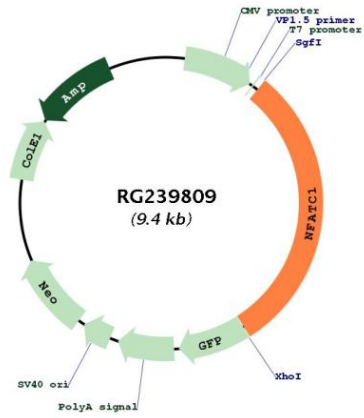
**Cloning Scheme:**

Cloning sites used for ORF Shuttling:



<b>ACCN:</b>	NM_001278669
<b>ORF Size:</b>	2829 bp
<b>OTI Disclaimer:</b>	The molecular sequence of this clone aligns with the gene accession number as a point of reference only. However, individual transcript sequences of the same gene can differ through naturally occurring variations (e.g. polymorphisms), each with its own valid existence. This clone is substantially in agreement with the reference, but a complete review of all prevailing variants is recommended prior to use. <a href="#">More info</a>
<b>OTI Annotation:</b>	This clone was engineered to express the complete ORF with an expression tag. Expression varies depending on the nature of the gene.
<b>Components:</b>	The ORF clone is ion-exchange column purified and shipped in a 2D barcoded Matrix tube containing 10ug of transfection-ready, dried plasmid DNA (reconstitute with 100 ul of water).
<b>RefSeq:</b>	<a href="#">NM_001278669.2</a>
<b>RefSeq Size:</b>	5031 bp
<b>RefSeq ORF:</b>	2832 bp
<b>Locus ID:</b>	4772
<b>UniProt ID:</b>	<a href="#">O95644</a>
<b>Cytogenetics:</b>	18q23
<b>Protein Families:</b>	Druggable Genome, Transcription Factors
<b>Protein Pathways:</b>	Axon guidance, B cell receptor signaling pathway, Natural killer cell mediated cytotoxicity, T cell receptor signaling pathway, VEGF signaling pathway, Wnt signaling pathway
<b>MW:</b>	101.7 kDa
<b>Gene Summary:</b>	The product of this gene is a component of the nuclear factor of activated T cells DNA-binding transcription complex. This complex consists of at least two components: a preexisting cytosolic component that translocates to the nucleus upon T cell receptor (TCR) stimulation, and an inducible nuclear component. Proteins belonging to this family of transcription factors play a central role in inducible gene transcription during immune response. The product of this gene is an inducible nuclear component. It functions as a major molecular target for the immunosuppressive drugs such as cyclosporin A. Multiple alternatively spliced transcript variants encoding distinct isoforms have been identified for this gene. Different isoforms of this protein may regulate inducible expression of different cytokine genes. [provided by RefSeq, Jul 2013]

Product images:



Circular map for RG239809