

Product datasheet for **RG239803**

NBR1 (NM_001291571) Human Tagged ORF Clone

Product data:

Product Type:	Expression Plasmids
Product Name:	NBR1 (NM_001291571) Human Tagged ORF Clone
Tag:	TurboGFP
Symbol:	NBR1
Synonyms:	1A1-3B; IAI3B; M17S2; MIG19
Mammalian Cell Selection:	Neomycin
Vector:	pCMV6-AC-GFP (PS100010)
E. coli Selection:	Ampicillin (100 ug/mL)



[View online »](#)

ORF Nucleotide Sequence:

>RG239803 representing NM_001291571.
 Blue=ORF Red=Cloning site Green=Tag(s)

```
GCTCGTTTAGTGAACCGTCAGAATTTTGTAAATACGACTCACTATAGGGCGGCCGGGAATTCGTGCGACTG
GATCCGGTACCGAGGAGATCTGCCGCCACGATCGCC
ATGGAACACAGGTTACTCTAAATGTGACTTTTAAAAATGAAATCAAAGCTTTCTGGTTTCTGATCCA
GAAAATACAACCTGGGCTGATATCGAAGCTATGGTAAAAGTTTCATTTGATCTGAATACTATTCAAATA
AAATACCTGGATGAGGAAAATGAAGAGGTATCCATCAACAGTCAAGGAGAATATGAAGAAGCGCTTAAG
ATGGCAGTTAAACAGGGAACCAACTGCAGATGCAAGTCCACGAAGGCCACCATGTCGTTGATGAAGCC
CCACCCCAAGTTGATGGAGCAAAACGACTAGCTGCCAGGGCAGGGAAGAAGCCACTTGCACATTACTCT
TCACTGGTGAGAGTCTTGGGATCAGACATGAAGACCCAGAGGATCCTGCAGTGCAGTCGTTTCCACTT
GTTCCATGTGACACAGACCAGCCTCAAGACAAGCCCCAGACTGGTTCACAAGCTACCTGGAGACGTTT
AGAGAACAAGTGTTAACGAAACGGTTGAGAAGCTTGAACAGAAATTACATGAAAAGCTTGCCTCCAG
AACCCATCCTTGGGTTCTTGTCCCTCAGAAGTCTCAATGCCTACTTCAGAAGAAACATTGTTTTTGCCA
GAAAACAGTTTCACTGGCATATTGCTTGAACAACCTGCCAAAGAAGGATTGTTGGTGTCCGCTACCAG
TGTAGCCTATGCCCATCCTACAATATCTGTGAAGATTGTGAAGCAGGGCCATATGCCCATGACACTAAC
CACGTCCTGCTGAAGTTGCGGAGACCTGTTGTGGGCTCCTCTGAACCGTTCTGCTCAAAAGTACTCT
ACTCCTCGTCTTCTGCTGCTCTGGAACAAGTCAGGCTCCAGAAACAGGTTGATAAGAATTTCTTAAA
GCAGAAAAGCAAAGGTTGCGAGCTGAGAAGAAACAACGTAAGCAGAGGTCAGGAACTTAAAAAGCAG
CTTAAACTCCATAGGAAAATTCACCTGTGGAATTCATCCATGGACTCCAGAGCCCAAGTCTCCTTTA
GGCCGACTGAGAGCTTGGCTCCAGTCTAATACCCTGATGCTCCCTTTCAGCCCTGTACCTCCGTTATG
CCAATGCTCAGTGCAGCATTGTGGATGAGAATTTGCCTGATGGGACTCACCTTCAGCCAGGAACCAAG
TTTATCAAACACTGGAGGATGAAAAATACAGGAAATGTAAGTGGAGTGCAGACACAAGCTCAAGTTT
ATGTGGGAAACCTGACTTTGGCTTCCACAGAAAAGAAGGATGTTTTGGTCCCTCAAGCCGGGC
CATGTGGGAGTTGTATCTGTGGAGTTCATTGCCCCAGCCTTGGAGGGAACGTATACTTCCATTGGCGT
CTTTCTCACAAGGCCAGCAATTTGGCCCTCGGGTCTGGTGCAGTATCATAGTAGATCCTTTCCTCC
GAAGAGAGCCCTGATAACATTGAAAAGGCATGATCAGCTCAAGCAAACTGATGATCTCACCTGCCAG
CAAGAGGAAACTTTTCTTGGCTAAAGAAGAAAGACAGCTTGGTGAAGTACTGAGCAGACAGAAGGG
ACAGCAGCTGCATCCCACAGAAGGCAAAAAATGTTGCCAGTGAAGGGGAGCTTACATCCCATCTGTG
GATCTTCTGACTGCCAGGACCTGCTGCTTTCAGCTGTTGGATATAAACATTGTTCAAGAGTTGGAG
AGAGTGCCCCACAACACCCTGTGGATGTGACTCCCTGCATGTCTCCTTGCCACATGACAGTCCTTTA
ATAGAGAAGCCAGGCTTGGGGCAGATAGAGGAAGAGAATGAAGGGCAGGATTTAAGCACTTCCCTGAT
TCTATGGTGTGAGTAAAGAGGAAGGCTGAGAACATTGCTTCTGTGGAGGAAGCAGAAGAAGACCTGAGT
GGGACCCAGTTTGTGTGTGAGACAGTAATCCGATCCCTTACCTTGGATGCTGCCCCAGACCACAACCT
CCTTGCAGACAGAAGTCTTGCAGATGACATTTGCCTTGCCTGAAGGACCACTTGGAAAATGAGAAGGAG
GAGATTATCCATATCGTGTGAGGAAGAAGCTGTGATGGAGGAGGAGGATGAGGAGGATGAGGAGGAG
GAGGATGAGCTCAAAGATGAAGTTCAAAGTCAGTCCTCTGCTTCCCTCAGAGGATTACATCATCATCTG
CCTGAGTGCTTTGATACCAGCCGCCCTTGGGGATTCTATGTACAGCTCTGCGCTCTCACAGCCAGGC
CTGGAGCGAGGTGCTGAAGGCAAGCTTGGGTTGAGGCTGGGCAGGAACCACTGAGGCTGGGGAAGA
CTCCCTGGAGGGGAGAACCAGCCACAGGAGCACAGCATAAGTGACATCCTCACGACCTCACAGACTCTG
GAAACAGTGCCCTAATCCCAGAGGTAGTGGAGCTTCCACCGTCACTGCCAGGAGCTCTCCTTGTGTA
CATCATCATGGTTCCCCAGGAGTGGATTTACCAGTTACCATACCAGAAGTTTCTCAGTCCCTGATCAG
ATCAGAGGAGAGCCAGAGGCTCATCAGGACTTGTAAACAGCAGACAGAAGAGCTATGACCACTCAAGG
CACCATCATGGGAGCAGCATTGCTGGAGGACTGGTGAAGGGGCTTTGTCTGTTGCTGCCTCTGCATAC
AAGGCCCTGTTTGTGGCCACCAGTCACTGCACAGGGTCTCTGGGGCTTGTCTGCTTCCCTCATCTG
GCCAAAAATGCTTCTTCTGAAAGCCCGAGTGAAGCATTCTCCTGGTTC
ACGCGTACGCGGCCGCTCGAG - GFP Tag - GTTTAAAC
```

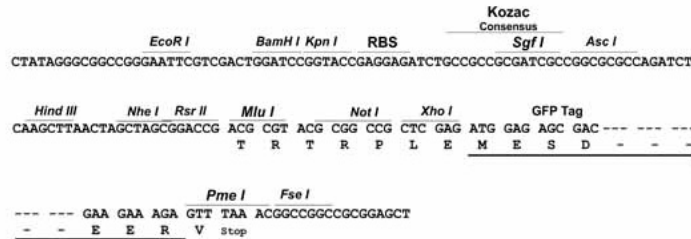
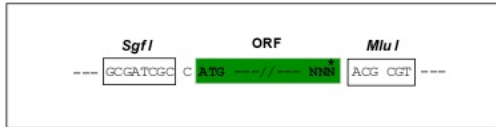
Protein Sequence: >Peptide sequence encoded by RG239803
 Blue=ORF Red=Cloning site Green=Tag(s)

MEPQVTLNVTFKNEIQSFLVSDPENTTWADIEAMVKVSFDLNTIQIKYLDEENEEVSINSQGEYEEALK
 MAVKQGNLQMQVHEGHHVVDAPPVVGAKRLAARAGKKPLAHYSSLVRVLGSDMKTPEDPAVQSFPL
 VPCD TDQPDQKPPDWFTSYLETFREQVNETVEKLEQKLHEKLVLQNP SLGSCPSEVSMPTSEETLFLP
 ENQFSWHIACNNCQRRI VGVRYQCSLCP SYNICEDCEAGPYGHDTNHVLLKLRP VVGSSEPFCHSKYS
 TPRLPAALEQVRLQKQVDKNFLKAEKQRLRAEKKQRKAEVKELKKQLKLRKRIHLWNSIHGLQSPKSPL
 GRPESLLQSN TLMPLQPCTSVMPML SAAFVDENL PDGTHLQPGTKF IKHWRMKN TGNV KWSADTKLF
 MWGNLTLASTEKKDVLVPCLKAGHVGVVSEFIAPALEGTYTSHWRLSHKGQFGPRVWC SIIVDPFPS
 EESPDNIEKGMIS SKTDDLTCQQEETFL LAKEERQLGEVTEQTEGTAACIPQKAKN VASERELYIPSV
 DLLTAQDLLSFELLDINIVQELERVPHNTPVDVTPCMSPLPHDSPLIEKPLGQIEEENEGAGFKALPD
 SMVSVKRKAENIASVEEAEDLSGTQFVCETVIRSLTLDAAPDHNPPCRQKSLQMTFALPEGPLGNEKE
 EIIHIAEEEEAVMEEEDEEEDDEEDELKDEVQSQSASSEDIYIIILPECFDTSRPLGDSMYSSALSQPG
 LERGAEGKPGVEAGQEPAEAGERLPGGENQPQEHSDILTTSTLETVPLIPEVVLPSPRSPSCV
 HHHGSPGVDLPVTIPEVSSVPDQIRGEPRGSSGLVNSRQKSYDHSRHHHGSSIAGGLVKGALSVAASAY
 KALFAGPPVTAQGLWGLSFLHLAKKCFLLKAPSEAFSWF
 TRTRPLEMESDESGLPAMEIECRITGTLNGVEFELVGGGEGTPEQGRMTNKMSTKGALTFSPYLLSHV
 MGYGFYHFGTYP SGYENPFLHAINNGGYNTRIEKYEDGGVLHVSFSYRYEAGRVIGDFKVMGTGFPEP
 SVIFTDKIIRSNATVEHLHPMGDNDLDGSFTRTFSLRDGGYSSVVD SHMHFKSAIHP SILQNGGPMFA
 FRRVEEDHSNTELGIVEYQHAFKTPDADAGEERV

Restriction Sites: Sgfl-MluI

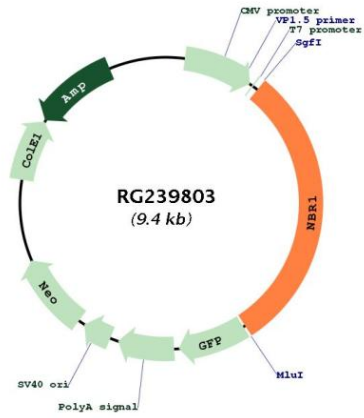
Cloning Scheme:

Cloning sites used for ORF Shutting:



ACCN:	NM_001291571
ORF Size:	2811 bp
OTI Disclaimer:	The molecular sequence of this clone aligns with the gene accession number as a point of reference only. However, individual transcript sequences of the same gene can differ through naturally occurring variations (e.g. polymorphisms), each with its own valid existence. This clone is substantially in agreement with the reference, but a complete review of all prevailing variants is recommended prior to use. More info
OTI Annotation:	This clone was engineered to express the complete ORF with an expression tag. Expression varies depending on the nature of the gene.
Components:	The ORF clone is ion-exchange column purified and shipped in a 2D barcoded Matrix tube containing 10ug of transfection-ready, dried plasmid DNA (reconstitute with 100 ul of water).
RefSeq:	NM_001291571.2
RefSeq Size:	3387 bp
RefSeq ORF:	2814 bp
Locus ID:	4077
UniProt ID:	Q14596
Cytogenetics:	17q21.31
Protein Families:	Druggable Genome
MW:	104.3 kDa
Gene Summary:	The protein encoded by this gene was originally identified as an ovarian tumor antigen monitored in ovarian cancer. The encoded protein contains a B-box/coiled-coil motif, which is present in many genes with transformation potential. It functions as a specific autophagy receptor for the selective autophagic degradation of peroxisomes by forming intracellular inclusions with ubiquitylated autophagic substrates. This gene is located on a region of chromosome 17q21.1 that is in close proximity to the BRCA1 tumor suppressor gene. Alternative splicing of this gene results in multiple transcript variants. [provided by RefSeq, Apr 2014]

Product images:



Circular map for RG239803