

Product datasheet for **RG239802**

SNX14 (NM_001297614) Human Tagged ORF Clone

Product data:

Product Type:	Expression Plasmids
Product Name:	SNX14 (NM_001297614) Human Tagged ORF Clone
Tag:	TurboGFP
Symbol:	SNX14
Synonyms:	RGS-PX2; SCAR20
Mammalian Cell Selection:	Neomycin
Vector:	pCMV6-AC-GFP (PS100010)
E. coli Selection:	Ampicillin (100 ug/mL)



[View online »](#)

ORF Nucleotide Sequence:

>RG239802 representing NM_001297614.
 Blue=ORF Red=Cloning site Green=Tag(s)

```
GCTCGTTTAGTGAACCGTCAGAATTTTGTAAACGACTCACTATAGGGCGGCCGGGAATTCGTGACTG
GATCCGGTACCGAGGAGATCTGCCGCCACGATCGCC
ATGGTGCCTGGGTGCGGACGATGGGGCAGAAGCTGAAGCAGCGGCTGCGACTGGACGTGGGACCGGAG
ATCTGCCGCCAGTACCCGCTGTTCTGCTTCTGCTGTCTCAGCGCCGCTCCCTGCTTCTTAAC
AGGTATATTCATATTTAATGATCTTCTGGTCATTTGTTGCTGGAGTTGTCACATTCTACTGCTCACTA
GGACCTGATTCTCTTACCAAATATATTTCTTCAAAATAAAATACAAACCAAGCAGTTAGGACTTCAG
GAATTATTTCTCAAGGTCATAGCTGTGCTGTTTGGTAAAGTAAAATGTAAACGACATAGGCCTTCT
TTGCTACTTGAAAACACCAGCCATGGCTAGACCTGAAAATTTCTTCAAGGTTGATGCATCTCTCTCA
GAGGTTCTTGAATTAGTGTGGAAAACTTGTTTATCCGTGGTACAGGGATGTGACAGATGATGAATCC
TTTGTGATGAAGTGAATAACATTACGTTTTTTGCATCTGTCTTAATAAGAAGGATTCACAAGGTG
GATATTCATCTATTATAACCAAGAACTATTAAGCAGCAATGAAGCATATAGAAGTATAGTAAA
GCCAGACAGAAAGTAAAAATACAGAGTTTTTACAGCAAGCTGCTTTAGAAGAATATGGTCCAGAGCTT
CATGTTGCTTTGAGAAGTGAAGAGATGAATTGCACTATTTAAGGAACTTACTGAACTGCTTTTCTCT
TATATTTGCTCCTAAAGCAACAGACTGCAGATCTCTGACCTTACTTATAAGAGAGATTCTGTCTGGC
TCTGTGTTCTTCTTCTTTGGATTTCTAGCTGATCCAGATACTGTGAATCATTGCTTATCATCTTC
ATAGATGACAGTCCACCTGAAAAGCAACTGAACCGGCTTCTCCTTTGGTTCCATTTTGCAGAAAATTT
GCAGAACCTAGAAATAAAAGCCATCTGTGCTGAAGTTAGAATTGAAGCAAAATCAGAGAGCAACAAGAT
CTTTTATTTGTTTTATGAATTTCTGAAACAAGAAGGCGCAGTGACCGTGTGCAGTTTTGTTTGAAT
GTGGAGGAATTTAATGATAGAATTTACGACCAGAATTATCAAATGATGAAATGCTGTCTCTTATGAA
GAATTCAGAGATTTATAAAACATACTGTTTGGATGAAAGTATTGACAAAATTAGATGATCCCTTC
ATTGTAGAAGAGATTTCAAGAATTGCTGAAGGCCATACATAGATGTTGTGAAACTTCAAACATAGAGA
TGCTTTTTGAAGCATATGAACATGTTCTTTCCCTTTTGGAGAATGTATTTACTCCTATGTTCTGCCAT
AGTGATGAGTATTTAGACAATTTAAGAGGTGAGAAATCACCAACACGCAATTCAAAATTGAACAGG
AACACACAGAAAAGGGGAGAATCATTGGAAATCAGCAGAATAGGTAGCAAAATTAAGGAGTATTCAAA
AGTACCACAATGGAGGGAGCTATGTTGCCTAATTATGGTGTAGCTGAAGGTGAAGATGATTTTATTGAA
GAAGGTATTGTTGAATGAAGATGATTCTCCAGTGGAGGCTGTGAGCACACCTAATACTCCCCGAAAC
CTTGCTGCATGGAATAAGCATTCCATATGTAGACTTTTTTGGAGTCCCTCCTCTGAAAGGAAGGAG
AAAAAGAAAGAATTCCTGTGTTTTGTATTGATGTTGAAAGAAATGATAGAAGAGCAGTTGGACACGAG
CCTGAACATTGGTCTGTCTATAGAAGATATCTGAATTCTATGTACTTGAATCAAACTAACAGAAATTT
CATGGTGCATTTCTGATGCCAGCTTCTTCTAAGAGGATCATTGGCCCCAAAAATATGAATTCTTA
AAGTCAAAGAGGGGAGAGTTCCAAGAATATCTACAGAACTTCTGCAGCATCCAGAATGAGTAATAGT
CAACTTCTGGCAGACTTTCTTTCCCTAATGGTGGGAAACACAAATTTCTTGATAAGATACTACCAGAT
GTAAATCTTGGGAAAATATAAAATCTGTTCTGGAAAATAATGAAAGAGAAAGGTGAGCATTGGAA
CCTTTTATCATGAATTTCAATTTCTGTGAGTCTCAAAGCCTAAACCAAGTAGACCAGAATGACC
ATTCTCAGCCCTACTTCAGAAAACAAGAAGCTTTTCAATGATCTGTTAAAAATAATGCAAACCGT
GCTGAAAATACAGAGAGAAAAGCAAAATCAGAATATTTTATGGAGGTGATGACTGTAGAAGGAGTCTAT
GATTACCTGATGTATGTAGGACGGTAGTTTTCCAGGTTCTGACTGGCTTCATCATCTTAAATGGGA
ACTCGAATCCTCTTTAAAAACACCTGGAAATGATACTGATTACTATCTTCAGTGTAACCTAGAACAG
CTATTTACAGGAGCACCGTTTGGTCTCACTATAACACTTCTCAGAGATGCTATATTTCTGTGAAAACACT
GAACCTCGCTCTCCAAGATAAGCAAAAAGGAGCAAAACAGACTTTTGAAGAAATGATGAATTACATT
CCAGATCTGTTAGTCAAGTGTATTGGTGAAGAAACCAAGTATGAAAGCATCAGACTTCTGTTTGTGGC
TTACAGCAACCGTACTCAACAAGCAGCTGACTTATGTTTTATTGGACATTGTGATACAGGAACTGTTT
CCAGAGCTCAATAAGGTACAAAAGGAAGTTACCTCTGTGACATCTGGATG
ACGCGTACGCGGCCGCTCGAG - GFP Tag - GTTTAAAC
```

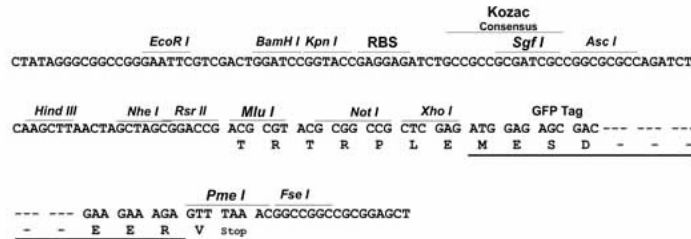
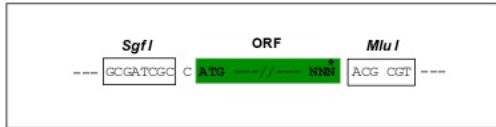
Protein Sequence: >Peptide sequence encoded by RG239802
 Blue=ORF Red=Cloning site Green=Tag(s)

MVPWVRTMGQKLKQRLRLDVGREICRQYPLFCFLLLCLSAASLLLNRyIHILMIFWSFVAGVVTFYCSL
 GPDLLPNIFFTIKYKPKQLGLQELFPQGHSCAVCGKVKCKRHRPSLLENYQPWLDLKISSKVDASLS
 EVLELVLENFVYPWYRDVTDDESFDLRLTRFFASVLIRRIHKVDIPSITTKLLKAAMKHIEVIVK
 ARQKVKNTEFLQQAAL E E YGPELHVALRSRRDELHYLRKLTELLFPYILPPKATDCRSLLIREILSG
 SVFLPSLDFLADPDTVNHLLIIFIDDSPEKATEPASPLVPFLQKFAEPRNKKPSVLKLELKQIREQQD
 LLFRFMNFKQEGAVHVLQFCLTVEEFNDRILRPELSNDEMLSLHEELQKIYKTYCLDESIDKIRFDPF
 IVEEIQRIAEGPYIDVVKLQTMRCLEAYEHVLSLENVFPMFCHSDEYFRQLLRGAESPTRNKLNLR
 NTQKRGESEFGISRIGSKIKGVFKSTMEGAMPLPNYGVAEGEDDFIEEGIVMEDDSPVEAVSTPNTPRN
 LAAWKISIPYVDFEDPSSERKEKKERIPVFCIDVERNDRRAVGHEPEHWSVYRRYLEFYVLESKLETF
 HGAFPDAQLPSKRIIGPKNYEFLKSKREEFQEYLKLLQHPELSNSQLLADFLSPNGGETQFLDKILPD
 VNLGKIISVPGKLMKEKGQHPFIMNFINSCEPKPKSRPELTILSPTSENNKLFNDLFKNNANR
 AENTERKQNYFMEVMTVEGVYDLYMYVGRVVFQVPDWLHLLMGTRILFKNTLEMYTDYYLQCKLEQ
 LFQEHRLVSLITLLRDAIFCENTEPRSLQDKQKQAKQTFEEMNYIPDLLVKIGEETKYESIRLLFDG
 LQQPVLNKQLTYVLLDIVIQELFPELNKVKQKEVTSVTSWM
 TRTRPLEMESDESGLPAMEIECRITGTLNGVEFELVGGGEGTPEQGRMTNKMSTKGALTFSPYLLSHV
 MGYGFYHFGTYPYSGYENPFLHAINNGGYNTRIEKYEDGGVLHVSFSYRYEAGRVIGDFKVMGTGFPEP
 SVIFTDKIIRS NATVEHLHPMGDNDLDGSFTRTFSLRDGGYSSVVD SHMHFSAIHPSILQNGGPMFA
 FRRVEEDHSNTELGIVEYQHAFKTPDADAGEERV

Restriction Sites: Sgfl-MluI

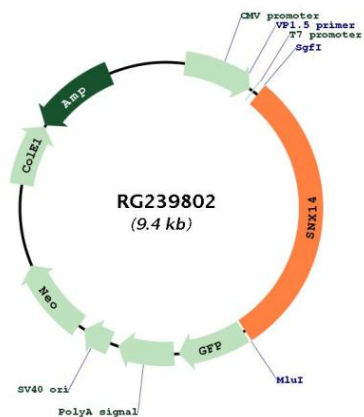
Cloning Scheme:

Cloning sites used for ORF Shutting:



ACCN:	NM_001297614
ORF Size:	2811 bp
OTI Disclaimer:	The molecular sequence of this clone aligns with the gene accession number as a point of reference only. However, individual transcript sequences of the same gene can differ through naturally occurring variations (e.g. polymorphisms), each with its own valid existence. This clone is substantially in agreement with the reference, but a complete review of all prevailing variants is recommended prior to use. More info
OTI Annotation:	This clone was engineered to express the complete ORF with an expression tag. Expression varies depending on the nature of the gene.
Components:	The ORF clone is ion-exchange column purified and shipped in a 2D barcoded Matrix tube containing 10ug of transfection-ready, dried plasmid DNA (reconstitute with 100 ul of water).
RefSeq:	NM_001297614.2 , NP_001284543.1
RefSeq Size:	3738 bp
RefSeq ORF:	2814 bp
Locus ID:	57231
UniProt ID:	Q9Y5W7
Cytogenetics:	6q14.3
Protein Families:	Transmembrane
MW:	109.6 kDa
Gene Summary:	This gene encodes a member of the sorting nexin family. Members of this family have a phox (PX) phosphoinositide binding domain and are involved in intracellular trafficking. The encoded protein also contains a regulator of G protein signaling (RGS) domain. Regulator of G protein signaling family members are regulatory molecules that act as GTPase activating proteins for G alpha subunits of heterotrimeric G proteins. Alternate splicing results in transcript variants encoding distinct isoforms. [provided by RefSeq, Jul 2014]

Product images:



Circular map for RG239802