

Product datasheet for **RG239801**

FAM184A (NM_001288576) Human Tagged ORF Clone

Product data:

Product Type:	Expression Plasmids
Product Name:	FAM184A (NM_001288576) Human Tagged ORF Clone
Tag:	TurboGFP
Symbol:	FAM184A
Synonyms:	C6orf60
Mammalian Cell Selection:	Neomycin
Vector:	pCMV6-AC-GFP (PS100010)
E. coli Selection:	Ampicillin (100 ug/mL)



[View online »](#)

ORF Nucleotide Sequence:

>RG239801 representing NM_001288576.
 Blue=ORF Red=Cloning site Green=Tag(s)

```
GCTCGTTTAGTGAACCGTCAGAATTTTGTAAACGACTCACTATAGGGCGGCCGGGAATTCGTGACTG
GATCCGGTACCGAGGAGATCTGCCGCCACGATCGCC
ATGAAGCAGCAGGCTTTGACAGAATTTGAAGCTTATAAGCACAGAGTTGAGGACATGCAACTTTGTGCA
GAAGCCAGCATGTCCAACGCATAGTGACCATGTCTAGAGAAGTGAAGAGATTAGAAGGAAATTTGAA
GAAAAATTACGGAGCTTTGGACAACCTCAAGTACAGTTTGAAAAAGACAAACGATTGGCATTGGAAGAC
TTGCAAGCTGCTCACAGACGGGAGATACAAGAGCTATTGAAGTCACAGCAGGATCACAGTGCCTCAGTA
AATAAAGGCCAGGAAAAGGCAGAGGAACTACACAGAATGGAGGTGGAGTCCCTAAACAAAATGCTTGAG
GAGCTAAGACTTGAACGGAAGAACTAATTGAGGATTATGAAGGCAAGTTGAATAAAGCTCAGTCCTTT
TATGAACGTGAGCTTGATACTTTGAAAAGGTCACAGCTTTTTACAGCAGAAAAGCTACAGGCCAGCAAA
GAAAAGGAAGCTGATCTTAGAAAAGAATTTCAAGGACAAGAAGCAATTTTACGAAAACTATAGGAAAA
TTAAAGACAGAGTTACAGATGGTACAGGATGAAGCTGGAAGTCTTCTTGACAAATGCCAAAAGCTTCAG
ACGGCACTTGCCATAGCAGAGAACAATGTTCAAGTTCTTCAAAAACAGCTTGATGATGCCAAGGAGGGA
GAAATGGCCCTATTAAGCAAGCACAAGAAGTGGAAAAGTGAAGTGAAGTGAAGTGAAGTGAAGTGAAGT
CAGCAAGCTTCAGATCTTGCTCCTCAAAGCTAGTCAATTTGGAATGCTTCAAGCAACTCAAATGACCCAG
GAAGTTACAATTAAGATTTAGAATCAGAAAAATCGAGAGTCAATGAGAGATTATCTCAACTTGAAGAG
GAAAGAGCTTTTTTGGCAAGCAAAACCCAAAGTCTGGATGAAGAGCAGAAGCAACAGATTCTAGAAGT
GAGAAGAAAGTAAATGAAGCAAGAGAAGTCAAGCAAGAAATATTATGAAAGGGAACCTAAAAACCTGCAA
AGTAGATTGGAAGAGGAGGTGACTCAATTAACAGAGGCCATTCTAAGACTTTGGAAGAATTAGCTTGG
AAGCACCATATGGCAATTGAAGCTGTCCACAGTAAATGCAATTAGGATAAGAAAAAAGTCAAAAGGTA
TTGGAAGAACAACATAACAAAGATAAACTAAACCTGGAAGAGGATAAAAAATCAGCTTCAACAAGAGCTA
GAAAACCTAAAGGAAGTACTGGAAGACAAGTTGAATACAGCCAATCAAGAGATTGGCCACCTCCAAGAT
ATGGTAAGGAAAAGTGAACAAGGCTTGCTGCTGCAGAAGGACTTATTGCTAGTCTTCAGGACTCCAG
GAAAGGCTTCAGAATGAGCTTGACTTAAAGACAGCCTAAAGGAGACCAAGGATGCTCTATTAAT
GTGGAGGTTGAGCTAGAACAAGAAAGGCAACAGCATGAAGAAAACAAATGCTGCCATGAAAGAAGAAGAG
AAGCTCAAAGTGGACAAAATGGCCATGACTTAGAAATTAAGTGGACTGAAAATCTTAGACAAGAGTGT
TCTAAACTTCGTGAAGAGTTAAGGCTTCAACATGAAGAGGATAAGAAGTCAAGCAATGCTCAACTTTTG
CAGTTGAAAGATCGAGAGAAAAATGCAGCAAGAGATTCATGGCAGAAGAAAGTAGAAGATCTCTAAAC
CAGATTTCTTGCTGAAACAGAATCTGGAGATACAGCTTTCCAGTCTCAGACTTCTTTGCAACAAGT
CAAGCCAGTTTACGCAAGAACGACAGCGGCTTACGCAAGAGCTTGAAGAATTAGAGGAGCAACATCAG
CAAAGACACAAATCATTAAAAGAAGCACATGTCCTTGCAATTTCAAACATATGGAAGAGGAAAAGGAAAAG
GAGCAAAGAGCTCTTGAATATCTTACAACAGAAGCATTCTGCAGAGCTTCAATCACTAAAAGATGCA
CACAGAGAGTCAATGGAGGGCTTCCGGATAGAAATGGAACAGGAACTTCAAGTCTTCCGTTTGAATTA
GAAGATGAAGGAAAGGCTATGCTTGCTTCTTGCAGTCAAGTCAACATCAACATGCAGCTGCAATT
GATTTGTTACGGCATAATCATCATCAAGAATTGGCAGCTGCTAAAATGGAATTAGAGAGAAGCATAGAC
ATCAGCAGAAGACAGAGTAAGGAGCACATATGTAGAATTACAGATCTACAAGAGGAATTAAGACACAGA
GAGCATCACATCTCTGAATTGGATAAGGAGGTTCAAGACCTTCAAGAGAAATATAAGTGCCCTAACCAAA
GAACTGGAATTTAAGGGGAAAGAAATTCAGAATACGAAGTGAATCTAACCAACAGATAAGATTAGAA
GAAATGGAAGAAAAATATCTAATGAGAGAATCAAACCAGAAGATATACAGATGATTACAGAATTAATA
GCCATGCTTACAGAAAGAGACCAGATCATAAAGAACTAATTCAAAGAAGAAGAATGATAAATCACC
ACAAACAGGTTTGTGAGTGTCCCAATCTAAGTCTGGAATCTGGTGGAGTGGGCAATGGACATCCT
AACCAGCTGGATCCCATCTAATTTCCAGTCCAGATATTGAGTTCAACAGCAGCAAACCACTTCCA
CAGCCAGTGCCACCTAAAGGGCCCAAGACATTTTGTAGTCTGCTCAGAGTGAAGCTTCTCCAGTGGCT
TCTCCAGATCCCCAGCGCCAGGAGTGGTTTGGCCGCTACTCACATTC
ACGCGTACGCGGCCGCTCGAG - GFP Tag - GTTTAAAC
```

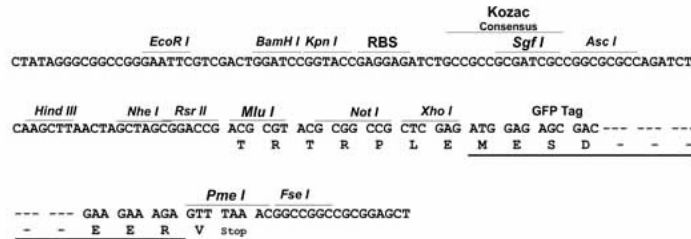
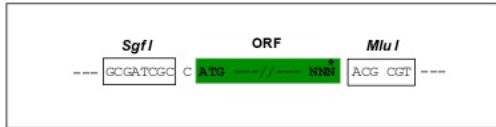
Protein Sequence: >Peptide sequence encoded by RG239801
 Blue=ORF Red=Cloning site Green=Tag(s)

MKQQALTEFEAYKHRVEDMQLCAEAQHVQRIVTMSREVEEIRRKFEEKLRSFGQLQVQFEKDKRLALED
 LQAAHRREIQELLSQQDHSASVNGQKEAEELHRMEVESLNKMLEELRLERKKLIEDYEGKLNKAQSF
 YERELDTLKRSQLF TAESLQASKEKEADLRKEFQGEA ILRKTIGKLTQELQMVQDEAGSLDKCQK LQ
 TALAIAENNVQVLQKQLDDAKEGEMALLSKHKEVESELAARERLQQQASDLVLKASHIGMLQATQMTQ
 EVTIKDLESEKSRVNERLSQLEEFERAF LRSKTQSLDEEQKQQILELEKKVNEAKRTQQEYERELKNLQ
 SRL EEEVTQLNEAHSKTL EELAWKHHMATEAVHSNAIRDK KKLQMDLEE QHNKDKLNLEEDKNLQ QEL
 ENLKEVLEDKLN TANQEIGHLQDMVRKSEQGLGSAEGLIASLQDSQERLQNELDLTKDSLKETKDALLN
 VEGELEQERQQHEETIAAMKEEEKLVKDKMAHDLEIKWTENLRQEC SKLREELRLQHEEDKKSAMSLL
 QLKDREKNAARDSWQKKVEDLLNQISLLKQNLEIQLSQSQTSLQQLQAQFTQERQRLTQEL EEEHQH
 QRHKS LKEAHLVAFQTM EEEKEKEQRAL ENHLQ QKHS AELQSLKDAHRESMEGFRIEMEQLQTLRFEL
 EDEGKAMLASLSELNHQAAAAIDLLRHNHQELAAAKMELERSIDI SRRQSKEHICRITDLQEELRHR
 EHHSI SELDKVQHLHENISALTKELFKGKEILRIRSESNQQIRLEEMEEKYLMRESKPEDIQMITELK
 AMLTERDQIIKKLIQKKKNDKSPNRFVSPNLSALES GVGNGHPNRLDPIPNSPVHDI EFNSSKPLP
 QPVPKGP KTF LSPAQSEASPVASPD PQRQEW FARYFTF
 TRTRPLEMESDESGLPAMEIECRITGTLNGVEFELVGGGEGTPEQGRMTNKMSTKGALTFSPYLLSHV
 MGYGFYHFGTYP SGYENPFLHAINNGGYTNTRIEKYEDGGVLHVFSYRYEAGRVIGDFKVMGTGFPED
 SVIFTDKIIRSNATVEHLHPMGDNDLDGSFTRTFSLRDGGYSSVVD SHMHF KSAIHPSILQNGGPMFA
 FRRVEEDHSNTELGIVEYQHAFKTPDADAGEERV

Restriction Sites: SgfI-MluI

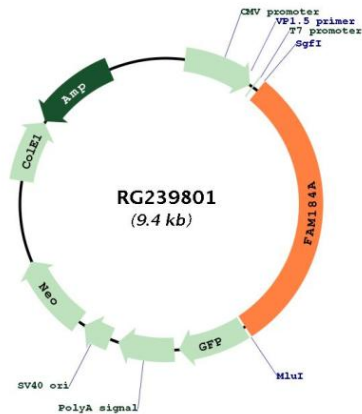
Cloning Scheme:

Cloning sites used for ORF Shutting:



ACCN:	NM_001288576
ORF Size:	2808 bp
OTI Disclaimer:	The molecular sequence of this clone aligns with the gene accession number as a point of reference only. However, individual transcript sequences of the same gene can differ through naturally occurring variations (e.g. polymorphisms), each with its own valid existence. This clone is substantially in agreement with the reference, but a complete review of all prevailing variants is recommended prior to use. More info
OTI Annotation:	This clone was engineered to express the complete ORF with an expression tag. Expression varies depending on the nature of the gene.
Components:	The ORF clone is ion-exchange column purified and shipped in a 2D barcoded Matrix tube containing 10ug of transfection-ready, dried plasmid DNA (reconstitute with 100 ul of water).
RefSeq:	NM_001288576.1 , NP_001275505.1
RefSeq Size:	3402 bp
RefSeq ORF:	2811 bp
Locus ID:	79632
UniProt ID:	Q8NB25
Cytogenetics:	6q22.31
MW:	110 kDa

Product images:



Circular map for RG239801