

Product datasheet for **RG239795**

VPS11 (NM_001290185) Human Tagged ORF Clone

Product data:

Product Type:	Expression Plasmids
Product Name:	VPS11 (NM_001290185) Human Tagged ORF Clone
Tag:	TurboGFP
Symbol:	VPS11
Synonyms:	END1; HLD12; hVPS11; PEP5; RNF108
Mammalian Cell Selection:	Neomycin
Vector:	pCMV6-AC-GFP (PS100010)
E. coli Selection:	Ampicillin (100 ug/mL)



[View online »](#)

ORF Nucleotide Sequence:

>RG239795 representing NM_001290185.
 Blue=ORF Red=Cloning site Green=Tag(s)

```

GCTCGTTTAGTGAACCGTCAGAATTTTGTAAACGACTCACTATAGGGCGGCCGGGAATTCGTGCACTG
GATCCGGTACCGAGGAGATCTGCCGCCACGATCGCC
ATGAAATCTGTTTGTTCGGAGGGTCCGTGCCGCGCCCTCTTTGGTTTAGCTGGTATCCAGAGTTGTT
CTGTGGTCTACGGGAAGAAAGAAGGAAGTCCATCCTAACTTGTATCAACTGAGCAATCTGGGAGG
CTCCTTGACTACCTGCACATATGGAAGGCCAGATCTGGTTCTTGCCACGTTCCCTACAGCTTACAGGC
TTCCAAGCCTACAACTACGGGTGACACACCTGTACCAACTGAAGCAGCACAATATTCTGGCATCTGTT
GGAGAAGATGAAGAGGGCATCAACCCCTTGGTTAAGATCTGGAACCTGGAGAAGAGAGATGGTGGCAAT
CCACTCTGCACTCGAATCTTCCCTGCTATTCCAGGAACAGAGCCAACCTGTTGTATCTTGTGTTGACTGTC
CATGAAAATCTCAACTTTATGGCCATTGGTTTCACAGATGGCAGTGTACATTGAACAAAGGAGACATC
ACCCGGGACCGGCATAGCAAGACCCAGATTTTGCACAAGGGCAACTATCCTGTAAGTGGATTGGCCCTT
CGCAAGCAGGAAAGACCACTCACTTGTGTTGTTGTGACAACAGAGAACGTCCAGTCTATATAGTTTCT
GGAAAAGACTACCTCGCGTGGAGTTGGACACCCATGGTTGTGGCCTGCGCTGCTCAGCCCTAAGTGAC
CCTTCTCAGGACCTGCAGTTCATTGTGGCCGGGATGAGTGTGTCTACTTGTACCAAGCCTGATGAACGT
GGGCCCTGCTTCGCCCTTGGAGGCCATAAGCTCATTGCCCACTGGTTTAGAGGCTACCTTATCATTGTC
TCCCGTGACCGGAAGTTTCTCCAAGTCAGAGTTTACCAGCAGGGATTCACAGAGCTCCGACAAGCAG
ATTCTAAACATCTATGACCTGTGCAACAAGTTCATAGCCTATAGCACCGTCTTTGAGGATGTAGTGGAT
GTGCTTGTGAGTGGGGCTCCCTGTACGTGCTGACGCGGGATGGGCGGTCCACGCACTGCAGGAGAAG
GACACACAGACCAAACTGGAGATGCTGTTAAGAAGAACCTATTTGAGATGGCGATTAACCTTGCCAAG
AGCCAGCATCTGGACAGTGTGGCTGGCCAGATTTTCATGCAGTATGGAGACCATCTCTACAGCAAG
GGCAACCACGATGGGGCTGTCCAGCAATATATCCGAACCATGGAAAGTTGGAGCCATCCTACGTGATC
CGCAAGTTTTCTGGATGCCAGCGCAATTCACAACCTGACTGCCTACCTGCAGACCTGCACCGCAATCC
CTGGCCAATGCCGACCATACCACCTGCTCCTCAACTGCTATACCAAGCTCAAGGACAGCTCGAAGCTG
GAGGAGTTCATCAAGAAAAGAGTGAGAGTGAAGTCCACTTTGATGTGGAGACAGCCATCAAGTCTCTC
CGGCAGGCTGGCTACTACTCCCATGCCCTGTATCTGGCGGAGAACCATGCACATCATGAGTGGTACCTG
AAGATCCAGTAGAAGACATTAAGAATTATCAGGAAGCCCTTCGATACATCGCAAGCTGCCTTTTGGAG
CAGGCAGAGAGCAACATGAAGCGCTACGGCAAGATCCTCATGCACCACATACCAGAGCAGACAACCTCAG
TTGCTGAAGGGACTTTGTACTGATTATCGGCCAGCCTCGAAGGCCGAGCGATAGGGAGGCCCCAGGC
TGCAGGGCCAACCTGAGGAGTTCATCCCCTCTTTGCCAATAACCCGCGAGAGCTGAAAGCCTTCTTA
GAGCACATGAGTGAAGTGCAGCCAGACTACCCAGGGGATCTACGACACACTCCTTGAGCTGCGACTG
CAGAACTGGGCCACGAGAAGGATCCACAGGTCAAAGAGAAGCTTCACGAGAGGCCATTTCCCTGCTG
AAGAGTGGTGCCTTCTGCGACGTCTTTGACAAGGCCCTGGTCTGTGCCAGATGCACGACTTCCAGGAT
GGTGTCTTTACCTTTATGAGCAGGGGAAGCTGTTCCAGCAGATCATGCACTACCACATGCAGCAGCAG
CAGTACCGGCAGGTATCAGCGTGTGTGAGCGCCATGGGAGCAGGACCCCTCCTTGTGGGAGCAGGCC
CTCAGTACTTTCGCTCGCAAGGAGGAGGACTGCAAGGAGTATGTGGCAGTGTCTCAAGCATATCGAG
AACAAAGACCTCATGCCACCTCTTCTAGTGGTGCAGACCTGGCCACAACCTCCACAGCCACACTCTCC
GTCATCAGGGACTACCTGGTCCAAAAACTACAGAAACAGAGCCAGCAGATTGCACAGGATGAGCTGCGG
GTGCGGGGTACCGAGAGGAGACCACCCGTATCCGCCAGGAGATCCAAGAGCTCAAGGCCAGTCTTAAG
ATTTTCCAAAAGACCAAGTGCAGCATCTGTAACAGTGCCTTGGAGTTGCCCTCAGTCCACTTCTGTGT
GGCCACTCCTTCCACCAACTGCTTTGAGAGTACTCGAAAAGTGTGCTGACTGCCCCACCTGCCTC
CCTGAAAACCGGAAGTTCATGGATATGATCCGGGCCAGGAACAGAAACGAGATCTCATGATCAATTC
CAGCATCAGTCAAGTGTCCAATGACAGCTTTTCTGTGATTGCTGACTACTTTGGCAGAGGTGTTTTTC
AACAAATTGACTCTGCTGACCGACCTCCACAGCCAGACTGACCTCCAGCCTGGAGGCTGGGCTGCAA
CGCGACCTACTCATGCACTCCAGGAGGGCACT
ACGCGTACGCGGCCGCTCGAG - GFP Tag - GTTTAAAC
  
```

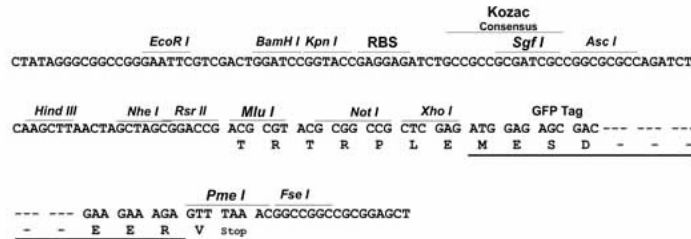
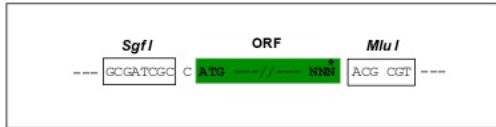
Protein Sequence: >Peptide sequence encoded by RG239795
 Blue=ORF Red=Cloning site Green=Tag(s)

MKSVCCRGGPCRAPLWFSWSSRVVLWSTGRKKEVHLLTCYQLSNPGRLLDYPAHMEGQIWFLLPRSLQLTG
 FQAYKLRVTHLYQLKQHNILASVGEDEEGINPLVKIWNLEKRDGGNPLCTRIFPAIPGTEPTVVSLTV
 HENLNFMAIGFTDGSVTLNKGDI TRDRHSKTQILHKGNYPTVGLAFRQAGKTTHLFVVTTENVSQSYIVS
 GKDYPRVELDTHGCGLRCSALSDPSQDLQFIVAGDECVLYQPDERGPCFAFEGHKLIAHWFRGYLIIV
 SRDRKVSFKSEFTSRDSQSSDKQILNIYDLCKNFIAYSTVFEDVVDVLAEWGSLYVLRDGRVHALQEK
 DTQTKLEMLFKKNLFEMAINLAKSQHLDSGLAQIFMQYGDHLYSKGNHDGAVQQYIRTIGKLEPSYVI
 RKFLDAQRIHNL TAYLQTLHRQSLANADHTLLNLCYTKLKDSSKLEEFIKKKSESEVHFDVETAIKVL
 RQAGYYSHALYLAENHAHHEWYKIQLEDIKNYQEALRYIGKLPFEQAESNMKRYGKILMHHIPEQTTQ
 LLKGLCTDYRPSLEGRSDREAPGCRANSEEFIPIFANNPRELKAFLEHMSEVQPDSPQGIYDTLLELRL
 QNWAHEKDPQVKEKLHAEATISLLKSGRFCDVFDKALVLCQMDFQDQVLYLVEQGKLFQQIMHYMQHE
 QYRQVISVCERHGEQDPSLWEQALSYFARKEEDCKEYVAAVLKHIEKNLMPPLL VVQTLAHNSTATLS
 VIRDYLVQKLQKQSQQIAQDELVRVRYRETTIRQEIQLKASPKIFQKTKCSICNSALELPSVHFLC
 GH5FHQCFESYSESDADCPTCLPENRKVMDMIRAQEQKRDLDHQFQHQKCSNDSFSVIADYFGRGVF
 NKLTLLTDPPTARLTSSLEAGLQRDLLMHSRRGT
TRTRPLEMESDESGLPAMEIECRITGTLNGVEFELVGGEGTPEQGRMTNKMSTKGALTFSPYLLSHV
 MGYGFYHFGTYPYSGYENPFLHAINNGGYNTRIEKYEDGGVLHVSFSYRYEAGRVIGDFKVMGTGFPED
 SVIFTDKIIRS NATVEHLHPMGDNDLDGSFTRTFSLRDGGYSSVVD SHMHFKSAIHPSILQNGGPMFA
 FRRVEEDHSNTELGIVEYQHAFKTPDADAGEERV

Restriction Sites: Sgfl-MluI

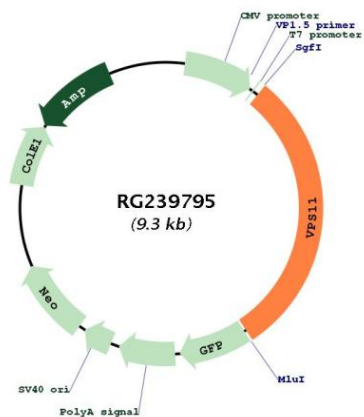
Cloning Scheme:

Cloning sites used for ORF Shutting:



ACCN:	NM_001290185
ORF Size:	2793 bp
OTI Disclaimer:	The molecular sequence of this clone aligns with the gene accession number as a point of reference only. However, individual transcript sequences of the same gene can differ through naturally occurring variations (e.g. polymorphisms), each with its own valid existence. This clone is substantially in agreement with the reference, but a complete review of all prevailing variants is recommended prior to use. More info
OTI Annotation:	This clone was engineered to express the complete ORF with an expression tag. Expression varies depending on the nature of the gene.
Components:	The ORF clone is ion-exchange column purified and shipped in a 2D barcoded Matrix tube containing 10ug of transfection-ready, dried plasmid DNA (reconstitute with 100 ul of water).
RefSeq:	NM_001290185.2
RefSeq Size:	3486 bp
RefSeq ORF:	2796 bp
Locus ID:	55823
UniProt ID:	Q9H270
Cytogenetics:	11q23.3
Protein Families:	Druggable Genome
MW:	107.8 kDa
Gene Summary:	Vesicle mediated protein sorting plays an important role in segregation of intracellular molecules into distinct organelles. Genetic studies in yeast have identified more than 40 vacuolar protein sorting (VPS) genes involved in vesicle transport to vacuoles. This gene encodes the human homolog of yeast class C Vps11 protein. The mammalian class C Vps proteins are predominantly associated with late endosomes/lysosomes, and like their yeast counterparts, may mediate vesicle trafficking steps in the endosome/lysosome pathway. Alternative splicing results in multiple transcript variants. [provided by RefSeq, Feb 2014]

Product images:



Circular map for RG239795