

Product datasheet for **RG239792**

KIF17 (NM_001287212) Human Tagged ORF Clone

Product data:

Product Type:	Expression Plasmids
Product Name:	KIF17 (NM_001287212) Human Tagged ORF Clone
Tag:	TurboGFP
Symbol:	KIF17
Synonyms:	KIF3X; KIF17B; KLP-2; OSM-3
Mammalian Cell Selection:	Neomycin
Vector:	pCMV6-AC-GFP (PS100010)
E. coli Selection:	Ampicillin (100 ug/mL)



[View online »](#)

ORF Nucleotide Sequence:

>RG239792 representing NM_001287212.
 Blue=ORF Red=Cloning site Green=Tag(s)

```

GCTCGTTTAGTGAACCGTCAGAATTTTGTAAATACGACTCACTATAGGGCGGCCGGGAATTCGTGACTG
GATCCGGTACCGAGGAGATCTGCCGCCACGATCGCC
ATGCAGGGCCTGCCGGATCCGCCCTCCAGAGAGGCATCATCCCCAGGGCCTTCGAGCACGTGTTTCGAG
AGCGTCCAGTGTGCAGAGAACAATAAGTTCCTGGTCCGGCCCTCTACCTGGAGATCTACAATGAAGAT
GTCCGGGACCTCCTTGGGGCTGACACCAAGCAGAAGCTGGAGCTGAAGGAGCACCCAGAGAAGGGCGTG
TACGTGAAGGGGCTGTCCATGCACACGGTGCACAGCGTGGCCAGTGTGAGCACATCATGGAGACTGGC
TGAAGAACCCTTCGGTCCGGCTACACGCTGATGAACAAGGATTCCTCACGCTCGCACTCCATCTTCACC
ATCAGCATCGAGATGTCTGCCGTGGATGAGCGGGCAAGGACCCTCCGGGCGGCAAGCTGAACCTG
GTGGACCTGGCGGGCAGCGAGCGGCAGTCCAAGACCGGGGCCACGGGCGAGCGGCTCAAGGAGGCCACC
AAGATCAACCTGTCGCTCTCGGCACTGGCAATGTCATCTCGGCGCTGGTGGACGGGCGTGAAGCAC
GTCCCTACCGTACTCGAAGCTGACCGGCTGCTGCAGGACTACTGGGCGCAACACCAAGACGCTC
ATGGTGGCCTGCCTGTGCGCTGCGGACAACAACACTACGATGAGACTCAGCACGCTGCGCTACGCCAAC
CGGGCCAAGAACATCAGGAACAAGCCCGGCATCAATGAGGACCCCAAGGATGCGCTGCTTCGCGAGTAC
CAGGAGGAGATCAAGAAGCTCAAGGCCATCCTGCACAGCAGATGAGCCCCAGCAGCCTGTCAGCCCTG
CTGTCCAGGCAGGTGCCCCAGACCCTGTGCAGGTGGAGGAGAAGCTGTTGCCCAACCTGTGATCCAG
CATGACGTGGAGGCCGAGAAGCAGCTGATCCGGGAGGAGTATGAAGAGCGCCTGGCCCGGCTGAAAGCC
GACTATAAGGCCGAGCAGGAGTCTCGGGCCAGGCTGGAGGAAGACATCACTGCCATGCGCAACTCATAT
GACGTGAGGCTGTCCACGCTGGAGGAGAACCCTGCCGAAGGAGACAGAGGCTGTCTGCAGGTGGGAGTC
CTCTACAAGGCTGAGGTGATGTCAGGGCTGAGTTTCCAGCAGCGCTGAGTACCCGCTGCTTTTCAG
TATGAGACAGTGGTGAACCCAAGTCTTCTCCAGACTGACACTCTGCCAGTACGATGTCCTCAAG
ACTCAGGTTTCTCCAGTTTGGCGAGCTGCCAAGGTGGAACCTCCAATCTGAGATTTCTCTGGGC
TCCAGTGAGTCATCCTCGCTCGAAGAACTCTGTGTCCGAGGCTTTCCCTGGGCTGAGGAGCCCTCC
AACGTGGAGGTCTCCATGCCACTGAGGAGTCCAGGAGCAGATACTTCTGGATGAGTGCCTCGGGCAG
GAGGCCGCTGGGCACCTGCTGGGGAAACAGAACTACCTCCCGCAAGAGGAGCCGAGGAGGTGCCCTG
CAGGGGTTACTAGGCTGCAGGACCCGTTTCCGAGGTGGAAGCCAAGCTGGCCAGACTCTCTCCACC
GTGGCCAGGACAGATGCACCCAGGCAGACGTCCCAAGTCCCTGTGCAGGTCCCTGCGCCGACAGAC
CTGCTGGAGCCCAGTGTGCCAGGCCGAAAGCCGAGGCGGCTGATGACTCCCGCCAGGCTGAGGTA
GATCTGGCCTCGAAGTGGCCTTAGAGGTGGTGCAGGACAGCAGAGCCTGGCGTGTGGTTGGAGGCTCAG
GCCCGGTGGCCCTGGTGGCTCAGCCTGAGCCCTGCCGGCCACAGCTGGTGTGAAGAGGGAGAGCGTG
GGCATGGAGGTGGCAGTGTGACTGATGACCCGCTGCCGTTGTGGACCAGCAGCAGGTGCTGGCCCGT
CTGCAGCTGTTGGAGCAGCAGGTTGTGGGTGGAGAGCAGGCCAAGAACAAGGACCTGAAGGAGAAGCAC
AAGCGGCCAAGCGCTACGCAGACGAGCGCAGGAAGCAGCTGGTGGCTGCCCTGCAGAACTCGGATGAG
GACAGCGGGGACTGGGTGCTGCTAACGCTACGACTCCATCCAGGAGGAAGTGGGGCCAAGAGCAAG
CTGCTGGAGAAGATGCAGAGGAAGTTCGGGCAGCAGAGGTGGAGATCAAAGATCTGCAGTCCGAGTTT
CAGCTGGAGAAGATCGATTACTTGGCCACCATCCGCCGAGGAGCGTACTCCATGCTCTTGCAGCAG
CTCCTGGAGCAGGTGCAGCCCTGATTCGAGGACTGTAACACAGCAACTGGAGAAGATTCTGCGT
GAGTCCTGCTGGGACGAAGATAACGGCTTCTGGAAGATCCACATCCCGTCATCACAAAAACAGCCTC
CCAGTAGCAGTTTCAACTGGGCCACAGAACAACAGCCCGCAAAACCTTGCAGCAGACATGGCGAG
CCGAACATGGAGGACGACCGCTACAGGCTCATGCTCAGTCGGAGCAACAGTGAACATTGCCAGCAAC
TACTTCCGATCTAAGCGGGCCAGCCAGATCCTCAGCACAGACGCCAGGAAGAGCCTCACACATCACAA
TCGCCACCAGGCTCAGTGCCTACTCAGCAACAACCTTGCCATCCACCCACCCAGGCCCTGAAATG
CCCCAGCCCCGGCCCTCCGCTCGAGTCCCTCGACATCCCTTTACCAAGGCCAAGCGTAAGAAAAGC
AAAAGCAACTTTGGCAGTGAACCTG
ACGCGTACGCGGCCGCTCGAG - GFP Tag - GTTTAAAC
  
```

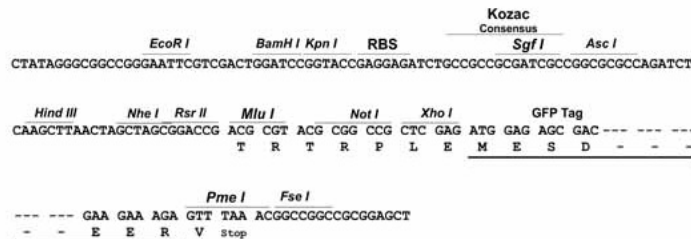
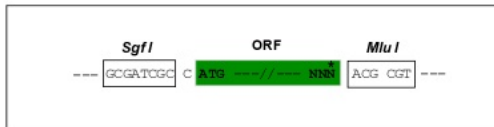
Protein Sequence: >Peptide sequence encoded by RG239792
 Blue=ORF Red=Cloning site Green=Tag(s)

MQGLPDPSPQRGIIPRAFEHVFESVQCAENTKFLVRASYLEIYNEDVRDLLGADTKQKLELKEHPEKGV
 YVKGLSMHTVHVAQCEHIMETGWKNRSVGYTLMNKDSSRSHSIFTISIEMSAVDERGKDHLRAGKLN
 VDLASERQSKTGATGERLKEATKINLSLALGNVISALVDGRCKHVPYRDSKLRLLQDSLGGNTKTL
 MVACLSPADNNYDETLSTLRYANRAKNIRNKPRINEDPKDALLREYQEEIKKLIKAILTQQMSPSSL
 LSRQVPPDPVQVEEKLLPQPVIQHDVEAEKQLIREEYEERLARLKADYKAEQESRARLEEDITAMRNSY
 DVRLSTLEENLRKETEAVLQVGVLYKAEVMSRAEFASSAEYPPAFQYETVVKPKVFSTDTLPSDDVSK
 TQVSSRF AELPKVEPSKSEISLGSSESSLEETS VSEAFPGPEEPSNVEVSMPTEESRSRYFLDECLGQ
 EAAGHLLGEQNYLPQEEPQEVPLQGLLGLQDPFAEVEAKLARLSSTVARTDAPQADVPKVPVQPAPTD
 LLEPSDARPEAEAADDFPPRPEVDLASEVALEVVRTAEPGVWLEAQAPVALVAQPEPLPATAGVKRESV
 GMEVAVL TDDPLPVVDQQV LARLQLLEQQVVGGEQAKNKDLKEKHRRKRYADERRKQLVAALQNSDE
 DSGDWLLNVYDSIQEEVRAKSKLLEKMQRKLRAAEVEIKDLQSEFQLEKIDYLATIRRQERDSMLLQQ
 LLEQVQPLIRDCNYSNLEKILRESCWDEDNGFWKIPHPVITKSLPVAVSTGPQNKPARTSAADNGE
 PNMEDDRYRLMLSRNSENIASNYFRSKRASQILSTDARKSLTHHNSPPGLSCPLSNNSAIPPTQAPEM
 PQPRPFRLES LDIPFTAKRKKSKSNFGSEPL
 TRTRPLEMESDESGLPAMEIECRITGTLNGVEFELVGGEGTPEQGRMTNKMSTKGALTFSPYLLSHV
 MGYGFYHFGTYPSTYENPFLHAINNGGYTNTRIEKYEDGGVLHVSFSYRYEAGRVIGDFKVMGTGFPED
 SVIFTDKIIRS NATVEHLHPMGDNDLDGSFTRTFSLRDGGYSSVVD SHMHFKSAIHP SILQNGGPMFA
 FRRVEEDHSNTELGIVEYQHAFKTPDADAGEERV

Restriction Sites: Sgfl-MluI

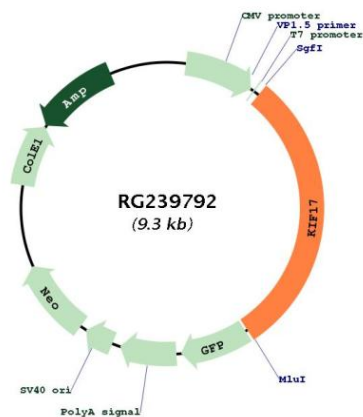
Cloning Scheme:

Cloning sites used for ORF Shutting:



ACCN:	NM_001287212
ORF Size:	2787 bp
OTI Disclaimer:	The molecular sequence of this clone aligns with the gene accession number as a point of reference only. However, individual transcript sequences of the same gene can differ through naturally occurring variations (e.g. polymorphisms), each with its own valid existence. This clone is substantially in agreement with the reference, but a complete review of all prevailing variants is recommended prior to use. More info
OTI Annotation:	This clone was engineered to express the complete ORF with an expression tag. Expression varies depending on the nature of the gene.
Components:	The ORF clone is ion-exchange column purified and shipped in a 2D barcoded Matrix tube containing 10ug of transfection-ready, dried plasmid DNA (reconstitute with 100 ul of water).
RefSeq:	NM_001287212.2
RefSeq Size:	4130 bp
RefSeq ORF:	2790 bp
Locus ID:	57576
UniProt ID:	Q9P2E2
Cytogenetics:	1p36.12
Protein Families:	Druggable Genome
MW:	104.5 kDa
Gene Summary:	Transports vesicles containing N-methyl-D-aspartate (NMDA) receptor 2B along microtubules. [UniProtKB/Swiss-Prot Function]

Product images:



Circular map for RG239792