

Product datasheet for **RG239791**

ARHGAP30 (NM_001287602) Human Tagged ORF Clone

Product data:

Product Type:	Expression Plasmids
Product Name:	ARHGAP30 (NM_001287602) Human Tagged ORF Clone
Tag:	TurboGFP
Symbol:	ARHGAP30
Mammalian Cell Selection:	Neomycin
Vector:	pCMV6-AC-GFP (PS100010)
E. coli Selection:	Ampicillin (100 ug/mL)



[View online »](#)

ORF Nucleotide Sequence:

>RG239791 representing NM_001287602.
 Blue=ORF Red=Cloning site Green=Tag(s)

```

GTGAACCGTCAGAATTTTGTAAACGACTCACTATAGGGCGGCCGGGAATTCGTCGACTGGATCCGGTA
CCGAGGAGATCTGCCGCCGCGATCGCCGGCGGCC
ATGAAGTCTAAGGACATAGAGGCCTCAGGCTTCAATGGGACAGCGCCTTCATGGAGGTGCGGGTACAA
TCCATCGTCGTGGAGTTCATCCTCACACAGCTGGACCAGCTCTTTGGGGTGCTGCCCTCTCTGGTGGT
GAGGTGGAGAGTGGGTGGCGATCGCTTCCAGGGACCCGGGCATCAGGCAGCCCCGAGACCTTATGCC
AGGCCACTGCCTTATCACCTGCCTAGCATACTGCAGGCTGGCGATGGACCCACAGATGCGGCCCTAC
CATACTATCATCGAGATTGCAGAGCACAAGAGGAAGGGTCTTTGAAGGTGAGGAAGTGGAGGTCTATC
TTCAATTTAGGTCGCTCTGGCCATGAGACTAAGCGTAACTTCCACGGGGGGCTGAGGACAGGGAGGAT
AAATCCAACAAGGGGACACTGCGGCCAGCAAAAGCATGGACTCACTGAGTGTGACGCTGGGGCCAGT
GATGAGCCAGAGGGGCTGGTGGGCCCAGCAGCCCCGGCCAAGCCCATTGCTGCCTGAGAGCTGGAG
AACGATTCTATAGAGGCAGCAGAGGTGAACAGGAGCCTGAGGCAGAAGCACTGGGTGCCACAACTCT
GAACCAGGCACACCAGACTGGGCGGTGAGCCATCCGGGCTGGGGGCAGCAGCCGTGCAGAACGCTGT
GCTGGTGTCCACATCTCAGACCCCTACAATGTCAACCTCCCGCTACACATCACCTCTATCCTCAGTGTG
CCCCGAACATCATCTCTAACGTTTCCTTGGCCAGGCTCACCCGTGGCCTTGAGTGCCCTGCTCTACAG
CACCGGCAAGCCCTGCCTCTGGCCCTGGCCCTGGCCCTGGCCTTGGCCCTGGCCCCCAGATGAAAAG
TTGGAAGCAAGTCCAGCCTCAAGTCCCCTGGCAGACTCAGGCCAGACGACTTGGCTCCTGCCCTGGAG
GACTCGTGTCCCAGGAGGTGCAGGACTCCTTCTCCTTCTAGAGGACTCAAGCAGCTCAGAACCTGAG
TGGGTGGGGCAGAGGATGGGGAGGTGGCCAGGCAGAGCAGCAGGAGCAGCCTTCTCCCTGGGGAG
GACGACCCTGGGATGGGCTACCTGGAGGAGCTCCTGGGAGTTGGCCTCAGGTGGAGGAGTCTCTGTG
GAGCCACCCTGGATGACCTGTCTCTGGATGAGGCACAGTTTGTCTTGGCCCCAGCTGTGTTCCCTG
GACTCCGCTGGCCCCAGGCTGAAGTTGAGGAGGAAAATGGGGAGGAAGTTTCTGAGTGCCCTATGAT
GACCTAAGTCCCCTTCTGGGACCTAAACCCCAATCTGGAAGGGTTCAGGGAGTCTGGAGGGAGAGGCA
GCAGGATGTGGAAGGCAGGCTCTGGGACAGGTTGGGAAGAGCAGGCATGCTGGGAAGTTGGGGAGGAC
AAGCAGGCTGAGCCTGGAGGCAGGCTAGACATCAGGGAAGAGGCAGAGGGAAGTCCAGAGACCAAGGTG
GAGGCTGGAAGGCCAGTGAGGATAGAGGGGAGGCTGGGGGAAGCCAAGAGACAAAAGTCAAGTTGAGA
GAAGGGAGTAGGGAAGAGACAGAGGCCAAGGAAGAGAAGTCCAAAGGTGAGAAGAAGGCTGACAGTATG
GAGGCTAAAGGTGTGGAGGAACAGGAGGAGATGAGTATACAGATGAGAAGGAAAAAGAAATTGAGAGA
GAAGAGGATGAACAAAGAGAGGAAGCCAGGTAGAAGCTGGAAGGGACCTAGAGCAAGGGGCCAGGAA
GATCAAGTTGCTGAGGAGAAATGGGAAGTTGTACAGAAACAAGAGGCTGAGGGAGTCAAGAGGATGAG
GACAAAGGACAGAGGGAGAAGGGGTACCATGAAGCAAGAAAAGACCAAGGAGATGGTGAAGACAGCAGA
AGCCCAGAAGCAGCAACTGAAGGAGGAGCAGGGGAGGTGACGAAGGAACGGGAGAGTGGGGATGGAGAG
GCTGAGGGAGACCAGAGGGCTGGAGGGTACTATTTAGAAGAGGACACCCTCTCTGAAGGTTCAAGGTGTA
GCGTCCCTGGAGGTTGACTGTGCCAAAGAGGGCAATCCTCACTCTTCTGAGATGGAAGAGGTAGCCCCA
CAGCCACCTCAGCCAGAGGAGATGGAGCCTGAGGGGCAGCCAGTCCAGACGGCTGTCTATGCCCTGT
TCTCTTGGCCTGGTGGCGTGGGCATGCGTCTAGCTTCCACTCTGTTTCAAGTCCAACAGGTCCGCTCT
GTGCTGTGGTGGCCCCCAAGCCACAGTTTGCCAAGATGCCAGTCAATGTGTAGCAAGATTCAATGTG
GCACCTGCAAATCCATGCCCAGGCTTGGCCGGCTTGTGGGACTCCTGGAGAAAAGGGCTTGGGGTCC
CGAGCTTCTCGATCCTCTTGGAGGAATGGGGTAGTCTTTCCTTTGATGCTGCTGTGGCCCTAGCCCGG
GACCGCCAAAGGACTGAGGCTCAAGGAGTTCGCGGAACCCAGACCTGACTGAGGGTGGGGATTACTGC
CTCATCCCCAGAACCCTCCCTTGTAGCATGATCTCTGCCATTCTCCTCGGCCCTTAGTGCCTGGAG
CTCCCATCTGAAGGTGCAGAAGGGTCTGGATCCCGGAGTCGTCTTAGTCTGCCCCCAGAGAACCCAG
GTTCTGACCCCTGTTGCTCTCAGCGCAGGTCAATGCATTTGAAACACAGGCTAACCTGGGAAA
GGTGAAGGACTG
ACGCGTACGCGGCCGCTCGAG - GFP Tag - GTTTAAAC
  
```

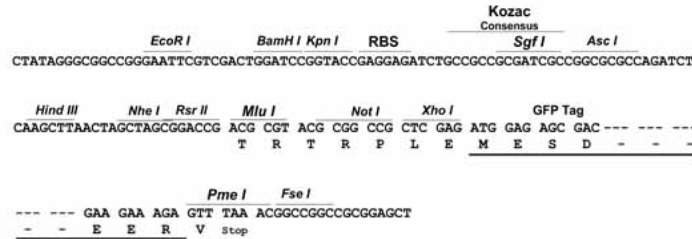
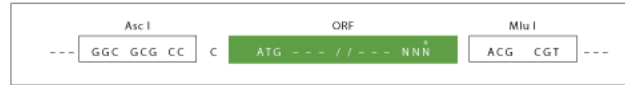
Protein Sequence: >Peptide sequence encoded by RG239791
 Blue=ORF Red=Cloning site Green=Tag(s)

MKSKDIEASGFNGTAAFMEVVRVQSI VVEFILT HVDQLFGGAALSGGEVESGWRS L PGTRASGSPEDLMP
 RPLPYHLPSILQAGDGPQMRPYHTIIEIAEHKRKGS LKVRKWSIFNLGRSGHETKRKLPRGAEDRED
 KSNKGTLRPAKSMDSL SAAAGASDEPEGLVGPSSPRPS L LPESENDSIEAAEGEQEPEAEALGGTNS
 EPGTPRAGRSAIRAGGSSRAERCAGVHISDPYVNLPLHITSILSVPPNII SNVSLARL TRGLECPALQ
 HRPSPASGPGPGPLGPGPPDEKLEASPASSPLADSGPDDLAPALEDSL SQEVQDSF SFLEDSSSEPE
 WYGAEDGEVAQAEAAGA AFSPGEDDPGMGYLEELLGVGPQVEEF SVEPPLDDL SLDEAQFVLAPSCCSL
 DSAGPRPEVEEENGEVFLSAYDDL SPLLGPKPP IWKGSGLGEAAAGCGRQALGQGGEEQACWEVGED
 KQAEPPGRLDIREEAEGSPETKVEAGKASEDRGEAGGSQETKVRLREGSREETAKEEKS KQKADSM
 EAKGVEEPPGGDEYTDKEKEIEREEDEQREEAQVEAGRDLEQGAQEDQVAEEKWEVVQKQEAEGVREDE
 DKGQREKGYHEARKDQGDGDSRPEAA TEGGAGEVSKERESGDGEAEGDQRAGGYLEEDTLSEGSGV
 ASLEVDCAKEGNPHSSEMEEVAPQPQPEEMEPEGQPSPDGCLCPCSLGLGGVGMRLASTLVQVQVRS
 VPVVPKPKQFAKMP SAMCSKIHVAPANPCPRPGRLDGTPGERAWGSRASRSSWRNGGSLSFDAAVALAR
 DRQRTEAQVRRRTQTCTEGGDYCLIPRTSPCSMI SAHSPRPLSCLLELPSEGAEGSGRSRLSLPPREPQ
 VPDLLSSQRRSYAFETQANPGKGEGL
 TRTRPLEMESDESGLPAMEIECRITGTLNGVEFELVGGGEGTPEQGRMTNKMKSTKGALTFSPYLLSHV
 MGYGFYHFGTYPSTYENPFLHAINNGGYNTRIEKYEDGGVLHVSFSYRYEAGRVIGDFKVMGTGFPED
 SVIFTDKIIIRSNATVEHLHPMGDNDLDGSFTRTFSLRDGGYSSVVD SHMHFKSAIHPSILQNGGPMFA
 FRRVEEDHSNTELGIVEYQHAFKTPDADAGEERV

Restriction Sites: AscI-MluI

Cloning Scheme:

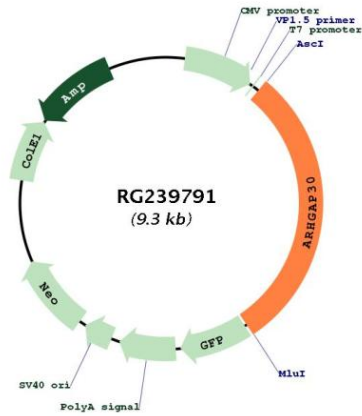
Cloning sites used for ORF Shuttling:



- ACCN:** NM_001287602
- ORF Size:** 2772 bp
- OTI Disclaimer:** The molecular sequence of this clone aligns with the gene accession number as a point of reference only. However, individual transcript sequences of the same gene can differ through naturally occurring variations (e.g. polymorphisms), each with its own valid existence. This clone is substantially in agreement with the reference, but a complete review of all prevailing variants is recommended prior to use. [More info](#)
- OTI Annotation:** This clone was engineered to express the complete ORF with an expression tag. Expression varies depending on the nature of the gene.
- Components:** The ORF clone is ion-exchange column purified and shipped in a 2D barcoded Matrix tube containing 10ug of transfection-ready, dried plasmid DNA (reconstitute with 100 ul of water).
- RefSeq:** [NM_001287602.2](#)
- RefSeq Size:** 3905 bp
- RefSeq ORF:** 2775 bp
- Locus ID:** 257106

UniProt ID: [Q7Z6I6](#)
Cytogenetics: 1q23.3
MW: 98.5 kDa
Gene Summary: GTPase-activating protein (GAP) for RAC1 and RHOA, but not for CDC42.[UniProtKB/Swiss-Prot Function]

Product images:



Circular map for RG239791