

Product datasheet for **RG239790**

POLR1B (NM_001282776) Human Tagged ORF Clone

Product data:

Product Type:	Expression Plasmids
Product Name:	POLR1B (NM_001282776) Human Tagged ORF Clone
Tag:	TurboGFP
Symbol:	POLR1B
Synonyms:	A135; RPA2; RPA135; Rpo1-2; TCS4
Mammalian Cell Selection:	Neomycin
Vector:	pCMV6-AC-GFP (PS100010)
E. coli Selection:	Ampicillin (100 ug/mL)



[View online »](#)

ORF Nucleotide Sequence:

>RG239790 representing NM_001282776.
 Blue=ORF Red=Cloning site Green=Tag(s)

```
GCTCGTTTAGTGAACCGTCAGAATTTTGTAAACGACTCACTATAGGGCGGCCGGGAATTCGTGACTG
GATCCGGTACCGAGGAGATCTGCCGCCGCGATCGCC
ATGCACGTGTGAGGGAAGAACATTCGGCTGTCAATATGAACCTCCACTACTTGGAAAATGGCACTGTT
ATGTTGAACTTTATTTACCGAAAAGAAGCTGTTCTTTCTCCTTTGGGATTTGCACCTAAGGCACTTGTC
AGCTTTTCTGATTATCAGATCTTTACAGGAGCTCATCAAAGGAAAAGAGGATGATTCTTCCCTTAGGAAC
TCTGTTTCTCAGATGTTAAGGATTGTAATGGAAGAGGGTTGTTTCGACACAAAAACAGTCCCTAACTAC
CTAGGTGAATGCTTCAGAGTAAACTCAATGTTCTGACTGGTACCCAAATGAGCAAGCTGCGGAGTTC
CTGTTAAACCAGTGCATCTGTATCCACTTGAAATCCAATACTGAAAAGTTTTATATGCTTTGTCTCATG
ACGCGAAAGCTCTTTGCTTAGCCAAAGGAGAGTGCATGGAGGACAATCCTGATAGTTTGGTGAACCAG
GAAGTCTCACACCGGTGAGCTCTTCTTATGTTCTGAAGGAAAACGGAAGTTGGTATAGTGTCT
ATTAATAAGCTTTTGTATAAGAAGGCTCAGAAGACCAGTGTTCATGAACACTGACAATTTGATGAGG
ATTTTTACAATGGGCATAGACCTTACAAAACCATTTGAATACCTTTTGTACTGGAATCTGCGTTCT
AAAACAGTCTTGGCCTCTACAAGATTCTGGACTTTGTGTTGTGGCTGACAAGCTGAATTCATACGC
TACCTCTCCCATTTCCGCTGCGTGCACAGAGGGGCTGATTTTGCCAAGATGAGGACCACCACAGTACGC
AGGCTGCTGCCAGAGTCTGGGGCTTCTTTGTCCCGTGCATACCCAGACGGGGAGCCCTGTGGCCTG
ATGAACCACCTAACTGCCGTATGTGAGGTTGTCACACAGTTTGTGTATACGGCATCTATCCAGCTTTA
CTGTGCAACTTGGGGTCACTCCCATGATGGAGCTCCCACCGATCATAACAGTGTGCTACCTGTGTC
CTGCTGGACGGTGCATGGTTGGCTGGGTGATAAGGATCTTGTCCAGGCATCGCAGATTCTCTCGT
CATTTTAAAGTGTGAGAGAGAAAAGAATTCTCCCTGGATGGAAGTGGTCTTATACCCATGACAGGA
AAACCAAGTCTGTACCCAGGATTGTTCTTTTACCCTTGTAGACTGGTACGGCCTGTGAGAAC
TTAGCATTGGGCAAGAAGAGCTAATTGGAACATGGAACAGATCTTCATGAATGTCGCTATCTTTGAG
GATGAAGTTTTGCTGGAGTTACCACACACCAGGAACCTTTCCACACAGCCTGCTGAGTGTGATTGCC
AACTTCATCCCTTCTCTGATCACAAACCAGAGTCCACGGAACATGTACCAATGCCAGATGGGTAAGCAA
ACTATGGGCTTTCCACTTCTCACTTATCAAGACCGATCGGATAACAACTGTATCGTCTTCAGACTCCT
CAGAGTCCCTTGGTGAGACCCTCCATGTATGATTATTATGACATGGATAACTATCCAATTTGGACCAAT
GCCATCGTTGCTGTGATTTCTTACTGGCTATGATATGGAAGATGCCATGATTGTGAATAAGGCCTCT
TGGGAACGAGGCTTTGCCATGGAAGTGTCTACAAGTCTGAGTTCATAGACCTCTCTGAAAAATTTAAA
CAAGGAGATAGTACCTGGTGTGTTGGCATCAAACCTGGTGACCCACGCTTCTGCAGAAGTTAGATGAC
GATGGATTGCCGTTTATAGGAGCAAACTGCAGTACGGAGATCCGTATTACAGCTACCTCAACCTAAC
ACCGGGGAAAGTTTTGTGATGTACTATAAGAGTAAAGAAAATTGTGTTGTGGATAACATCAAAGTGTGC
AGTAATGACACTGGGAGTGGAAAATTCAAGTGTGTTTGCATCACTATGAGAGTGCCTCGGAACCCAACT
ATCGGAGATAAATTTGCCAGTCGCCATGGGCAGAAAGGGCATTAAAGCAGATTGTGGCCGGCTGAGGAC
ATGCCTTTTACTGAGAGTGGGATGGTCCAGACATCTGTTCAATCCCATGGTTTTCCATCCCGCATG
ACACCTTCATCTTCTCAGAGGAGAACTCGGCCTTAGAATACTTTGGTGTGATGTTAAAGGCTGCTGGC
TACAATTTCTATGGCACCGAGAGGTTATATAGTGGCATCAGTGGGCTAGAAGTGAAGCAGACATCTTC
ATAGGAGTGGTTTATTATCAGCGCTTACGCCATATGGTCTCAGACAAATTTCAAGTAAAGGACAACCTGGA
GCCCGAGACAGAGTACCAACCAGCCTATTGGGGAAAGAAATGTCCAGGGTGAATCCGTTTTGGGGAG
ATGGAACGGGATGCGCTTTAGCTCATGGTACATCTTTTCTCCTTCATGACCGCCTCTTCAACTGCTCA
GATCGGTGCGTAGCCATGTGTGTGTAAGTGTGGCAGTTTACTCTCCTGTTGGAGAAGCCACCC
CCTTCTGGTCTGCCATGCGCAACAGAAAATACTGACTCTGTGTAGTGCAGTGACACTATCGAT
ACTGTTTCTGTGCTTATGTTTTCGGTATTTGTAGCTGAAGTGGCAGCTATGAACATCAAAGTGAAA
CTGGATGTTGTT
AGCGGACCGACCGGTACGCGGCCGCTCGAG - GFP Tag - GTTTAAAC
```

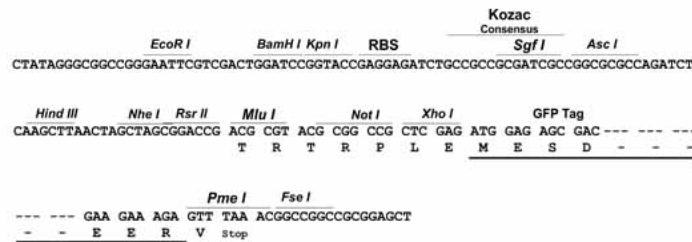
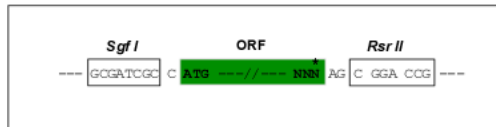
Protein Sequence: >Peptide sequence encoded by RG239790
 Blue=ORF Red=Cloning site Green=Tag(s)

MHCVREEHSAVNMNLHYLENGTVMLNFIYRKELFFLPLGFALKALVSFSDYQIFQELIKGKEDDSFLRN
 SVSQMLRIVMEEGCSTQKQVLNVLGECFRVKNLVPDWYPNEQAAEFLFNQCICIHLSNTEKFYMLCLM
 TRKLFALAKGECMEDNPDLSLNQEVLPQQLFMLFKEKLEGLWSIKIAFDKKAQKTSVSMNTDNLMR
 IFMTMGIDLTKPFEYLFATGNLRSKTGLGLLQDSGLCVVADKLNFIYRLSHFRCVHRGADFAMRRTTVR
 RLLPESWGFLCPVHTPDGEPCLMNLHTAVCEVVTQFVYTASIPALLCNLGVTPIDGAPHRYSYSECYPV
 LLDGVMVGWVDKDLAPGIADSLRHFKVLRKRIPPWMEVVLIPMTGKPSLYPGLFLFTTPCRLVRPVQN
 LALGKEELIGTMEQIFMNVAIFFEDEVFAGVTTHQELFPHSLLSVIANFIPFSDHNQSPRMYQCQMGKQ
 TMGFPLLTYQDRSDNKLRYLQTPQSPLVRPSMYDYDMDNYPIGTNAIVAVISYTGDMEDAMVINKAS
 WERGFAGHSVYKSEFIDLSEKIKQGDSSLVFGIKPGDPRVLQKLDDGLPFIGAKLQYGPYYSYLNLN
 TGESFVMYKSKENCVDNIKVCSNDTGSQKFKVCITMRVPRNPTIGDKFASRHGQKILSRLWPAED
 MPFTESGMVPDILFNPHGFPSRMTIGMLIESMAGKSAALHGLCHDATPFIFSEENSALEYFGEMLKAAG
 YNFYGTERLYSGISGLELEADIFIGVVYYQRLRHMVSDKFQVRTTGARDRVTNQPIGGRNVQGGIRFGE
 MERDALLAHGTSFLLHDRLFNCSDRSVAHVCKVCGSLLSPLLEKPPPSWSAMRNRKYNCTLCRSRSDTID
 TVSVPYVFRYFVAELAAAMNIKVKLDVV
 SGPTRTRPLEMESDESGLPAMEIECRITGTLNGVEFELVGGEGTPEQGRMTNKMKSTKGALTFSPYLL
 SHVMGYGFYHFGTYPSGYENPFLHAINNGGYTNTRIEKYEDGGVLVHVSFSYRYEAGRVIGDFKVMGTGF
 PEDSVIFTDKIIRSNAIVEHLHPMGDNDLDGSFTRTFSLRDGGYSSVVDSSHMHFKSAIHPSILQNGGP
 MFAFRRVEEDHSNTELGIVEYQHAFKTPDADAGEERV

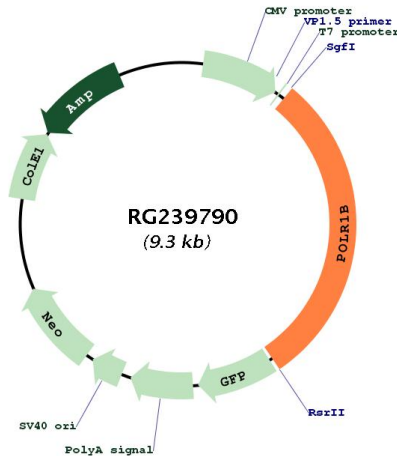
Restriction Sites: SgfI-RsrII

Cloning Scheme:

Cloning sites used for ORF Shuttling:



Plasmid Map:



ACCN:	NM_001282776
ORF Size:	2772 bp
OTI Disclaimer:	The molecular sequence of this clone aligns with the gene accession number as a point of reference only. However, individual transcript sequences of the same gene can differ through naturally occurring variations (e.g. polymorphisms), each with its own valid existence. This clone is substantially in agreement with the reference, but a complete review of all prevailing variants is recommended prior to use. More info
OTI Annotation:	This clone was engineered to express the complete ORF with an expression tag. Expression varies depending on the nature of the gene.
Components:	The ORF clone is ion-exchange column purified and shipped in a 2D barcoded Matrix tube containing 10ug of transfection-ready, dried plasmid DNA (reconstitute with 100 ul of water).
RefSeq:	NM_001282776.2
RefSeq Size:	4979 bp
RefSeq ORF:	2775 bp
Locus ID:	84172
UniProt ID:	Q9H9Y6
Cytogenetics:	2q14.1
Protein Families:	Transcription Factors
Protein Pathways:	Metabolic pathways, Purine metabolism, Pyrimidine metabolism, RNA polymerase
MW:	104.9 kDa

Gene Summary:

Eukaryotic RNA polymerase I (pol I) is responsible for the transcription of ribosomal RNA (rRNA) genes and production of rRNA, the primary component of ribosomes. Pol I is a multisubunit enzyme composed of 6 to 14 polypeptides, depending on the species. Most of the mass of the pol I complex derives from the 2 largest subunits, Rpa1 and Rpa2 in yeast. POLR1B is homologous to Rpa2 (Seither and Grummt, 1996 [PubMed 8921381]).[supplied by OMIM, Mar 2008]