

Product datasheet for **RG239786**

PRKCBP1 (ZMYND8) (NM_001281779) Human Tagged ORF Clone

Product data:

Product Type:	Expression Plasmids
Product Name:	PRKCBP1 (ZMYND8) (NM_001281779) Human Tagged ORF Clone
Tag:	TurboGFP
Symbol:	ZMYND8
Synonyms:	PRKCBP1; PRO2893; RACK7
Mammalian Cell Selection:	Neomycin
Vector:	pCMV6-AC-GFP (PS100010)
E. coli Selection:	Ampicillin (100 ug/mL)



[View online »](#)

ORF Nucleotide Sequence:

>RG239786 representing NM_001281779.
 Blue=ORF Red=Cloning site Green=Tag(s)

```
GCTCGTTTAGTGAACCGTCAGAATTTTGTAAACGACTCACTATAGGGCGGCCGGGAATTCGTGCACTG
GATCCGGTACCGAGGAGATCTGCCGCCCGCATCGCC
ATGAATGAAATCGAAGTATGTCCAGAATGTTATCTAGCTGCTTGCCAAAAACGAGATAACTGGTTTTGT
GAGCCTTGTAGCAATCCACATCCTTTGGTCTGGGCCAAACTGAAGGGTTTCCATTCTGCGCTGCAAAA
GCTCTAAGGGATAAAGACGGGCAGGTTCGATGCCGATTCTTTGGACAACATGACAGGGCCTGGGTCCA
ATAAATAATTGCTACCTCATGTCTAAAGAAATTCCTTTTTCTGTGAAAAAGACTAAGAGCATCTTCAAC
AGTGCCATGCAAGAGATGGAGGTTTACGTGGAGAACATCCGCAGGAAGTTTGGGGTTTTTAATTACTCT
CCATTTAGGACACCCTACACACCCAACAGCCAGTATCAAATGCTGCTCGATCCCACCAACCCAGCGCC
GGCACTGCCAAGATAGACAAGCAGGAGAAGGTCAAGCTCAACTTTGACATGACGGCATCCCCAAGATC
CTGATGAGCAAGCCTGTGCTGAGTGGGGGCACAGGCCCGGATTCCTTGTGGATATGCCGCGCTCC
CCCATGAGCACAACCTTCTGTGCACACGGGCTCCGACGTGGAGCAGGATGCTGAGAAGAAGGCCAGC
TCGAGCCACTTCAGTGCAGCAGGAGTCCATGGACTTCTGGATAAGAGCACAGCTTCACCAGCCTCC
ACCAAGACGGGACAAGCAGGGAGTTTATCCGGCAGCCAAAGCCCTTCTCTCCTCAACTGTCAGCTCCT
ATCACGACGAAAACGGACAAAACCTCCACCACCGCAGCATCCTGAATCTTAACTGGATCGAAGCAAAA
GCTGAGATGGATTTGAAGGAGCTGAGCGAGTCCGTCAGCAACAGTCCACCCCTGTTCTCTCATCTCT
CCCAAGCGCCAGATTCGTAGCAGTTCCAGCTGAATCTTGACAAGACCATAGAGAGTTGCAAAGCACAA
TTAGGCATAAATGAAATCTCGGAAGATGTCTATACGGCCGTAGAGCACAGCGATTTCGGAGGATTCTGAG
AAGTCAGATAGTAGCGATAGTGAGTATATCAGTGATGATGAGCAGAAGTCTAAGAACGAGCCAGAAGAC
ACAGAGGACAAAGAAGGTTGTGAGTGGACAAGAGCCATCTGCTGTTAAAAAAGCCCAAGCCTACA
AACCAGTGGAGATTAAGAGGAGCTGAAAAGCAGCTCACCAGCCAGCAGAGAAGCCAGCAGCCTGGAGCA
GTCAAGGACAAGGCCAGCCCTGAGCCTGAGAAGGACTTTCCGAAAAGGCAAAAACCTTCACCTCACCCC
ATAAAGGATAAACTGAAGGGAAAAGATGAGACGGATTCCCAACAGTCCATTTGGGCTGGACTCTGAT
TCAGAGAGCGAATTGTATAGATTTAGGAGAAGACATTCTGGGCGGGAGGGTCGAAAAAATAAGAAG
GAACCCAAAGAACCATCTCCAAACAGGATGTTGTAGGTAAAACCTCCACCATCCACGACGGTGGGCAGC
CATTCTCCCCGGAAACACCGGTGCTCACCCGCTCTCCGCCAAACTTCGCGGCTGGGCCACAGCC
ACCACCAGCACGTCCTCCACGGTACCGTCACGGCCCCGGCCCCCGCCGACAGGAAGCCAGTGAAG
AAGCAGAGGCCGCTTTTACGAAGGAGACTGCCCGGCCGTGCAGCGGGTGTGTGGAACATCAACT
GTCCAGCAGAAGGAGATCACACAGAGCCATCCACGTCCACCATCACCTGGTGACCAGCACACAGTCA
TCGCCCTGGTACCAGCTCGGGTCCATGAGCACCTTGTGTCTCAGTCAACGCTGACCTGCCATC
GCCACTGCCTCAGCTGATGTCGCGCTGATATTGCCAAGTAACTAGCAAAATGATGGATGCAATAAAA
GGAACAATGACAGAAATATAACAGATCTTTCTAAAAACACTACTGGAAGCAAAATAGCTGAGATTCGC
AGGCTGAGGATCGAGATAGAGAAGCTCCAGTGGCTGCACCAGCAAGAGCTCTCCGAAATGAAACACAAC
TTAGAGCTGACCATGGCGGAGATGCGGCAGAGCCTGGAGCAGGAGCGGGACCGGCTCATCGCCGAGGTG
AGAAGCAGCTGGAGTTGGAGAAGCAGCAGCGGTTGGATGAGACCAAGAAGAAGCAGTGGTGCGCCAAC
TGCAAGAAGGAGGCCATCTTTACTGCTGTTGGAACACCAGCTACTGTGACTACCCCTGCCAGCAAGCC
ACTGGCCTGAGCACATGAAGTCTGCACCCAGTCAGCTACTGCTCCTCAGCAGGAAGCGGATGCTGAG
GTGAACACAGAAAACACTAAATAAGTCTCCAGGGGAGCTCCTCGAGCACACAATCAGCACCTTCAGAA
ACGGCCAGCGCCTCCAAAGAGAAGGAGACGTCAGCTGAGAAAAGCAAGGAGAGTGGCTCGACCTTGAC
CTTTCTGGCTCCAGAGAGACGCCCTCCTCATTCTCTTAGGCTCCAACCAAGGCTCTGTTAGCAAAAGG
TGTGACAAGCAACCTGCCTATGCCCAACCACCACAGACCACCAGCCGACCCCAACTACCCCGCCAG
AAGTACCATTCCCGGAGTAATAAATCCAGTTGGAGCAGCAGTATGAGAAGAGGGGATCGACACGTTCC
GATCACAACACCAGTACCAGCACGAAGAGCCTCCTCCGAAAGAGTCTCGGCTGGACACCTTCTGGGAC
ACGCGTACGCGGCCGCTCGAG - GFP Tag - GTTTAAAC
```

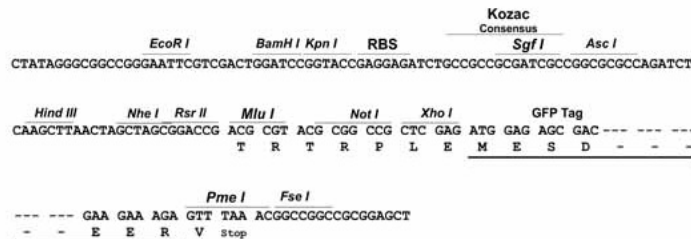
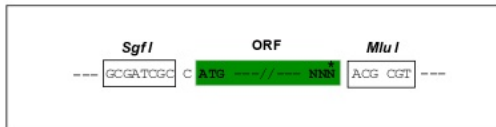
Protein Sequence: >Peptide sequence encoded by RG239786
 Blue=ORF Red=Cloning site Green=Tag(s)

MNEIEVCPECYLAACQKRDNWFCEPCSNPHPLVWAKLKGFFFWPAKALRDKDGQVDARFFGQHDRAWVP
 INNCYLMSKEIPFSVKKTKSIFNSAMQEMEYVENIRRKFGVFNYSFRTPTYPNSQYQMLLDPTNP
 SA GTAKIDKQEKVKNLNFDMTASPKILMSKPVLSGGTGRRISLSDMPRSPMSTNSSVHTGSDVEQDAEKKAT
 SSHFSASEESMDFLDKSTASPASTKTGQAGSLGSPKPFSPQLSAPITTKTDKTSTTGSILNLDLDRSK
 AEMDLKELSESVMQSTPVPLISPKRQIRSRFQLNLDKTIESCQAQLGINEISEDVYTAVEHSDSE
 DSE KSDSSDSEYISDDEQKSKNEPEDTEDKEGCQMDKEPSAVKKPKPTNPVEIKEELKSTSPASEKADPGA
 VKDKASPEPEKDFSEKAKPSPHPKDKLKGKDETDSPVHLGLDSDSESELVIDLGEDHSGREGRNKK
 EPKEPSPKQDVVGKTPPSTTVGSHSPETPVLTRSSAQTSAAGATATTSTSTVTVTAPAPAATGSPVK
 KQRPLLPKETAPAVQRVWNSSTVQKEITQSPSTSTITLVTSTQSSPLVTSSGSMSTLVSSVNADLPI
 ATASADVAADIKYTSKMMDAIKGMTIEIYNDLSKNTTGSTIAEIRRLRIEIEKLQWLHQELSEMKNH
 LELTMAEMRQSLERDRLIAEVKKQLELEKQAVDETKKQWCANCKEAIIFYCCWNTSYCDYPCQQA
 HWPEHMKCTQSATAPQQEADAEVNTETLNKSSQSSSTQSAPSETASASKEKETSAEKSESGSTLD
 LSGSRETPSSILLGNSQGSVSKRCDKQPAYAPTTDHPHPNYPAPQKYHSRNSKSSWSSSDEKRGSTRS
 DHNTSTSTKSLLPKESRLDTFWD
 TRTRPLEMESDESGLPAMEIECRITGTLNGVEFELVGGEGTPEQGRMTNKMSTKGALTFSPYLLSHV
 MGYGFYHFGTYPSTYENPFLHAINNGGYNTRIEKYEDGGVLHVSFSYRYEAGRVIGDFKVMGTGFPED
 SVIFTDKIIRSNATVEHLHPMGDNDLDGSFTRTFSLRDGGYSSVVDSHMHFSAIHP SILQNGGPMFA
 FRRVEEDHSNTELGIVEYQHAFKTPDADAGEERV

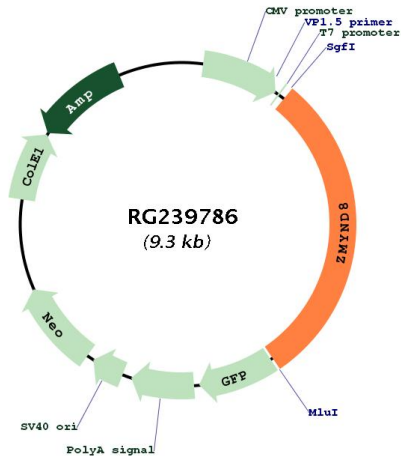
Restriction Sites: Sgfl-MluI

Cloning Scheme:

Cloning sites used for ORF Shutting:



Plasmid Map:



ACCN: NM_001281779

ORF Size: 2760 bp

OTI Disclaimer: The molecular sequence of this clone aligns with the gene accession number as a point of reference only. However, individual transcript sequences of the same gene can differ through naturally occurring variations (e.g. polymorphisms), each with its own valid existence. This clone is substantially in agreement with the reference, but a complete review of all prevailing variants is recommended prior to use. [More info](#)

OTI Annotation: This clone was engineered to express the complete ORF with an expression tag. Expression varies depending on the nature of the gene.

Components: The ORF clone is ion-exchange column purified and shipped in a 2D barcoded Matrix tube containing 10ug of transfection-ready, dried plasmid DNA (reconstitute with 100 ul of water).

RefSeq: [NM_001281779.3](#)

RefSeq Size: 5464 bp

RefSeq ORF: 2763 bp

Locus ID: 23613

Cytogenetics: 20q13.12

Protein Families: Druggable Genome, Transcription Factors

MW: 101.4 kDa

Gene Summary:

The protein encoded by this gene is a receptor for activated C-kinase (RACK) protein. The encoded protein has been shown to bind in vitro to activated protein kinase C beta I. In addition, this protein is a cutaneous T-cell lymphoma-associated antigen. Finally, the protein contains a bromodomain and two zinc fingers, and is thought to be a transcriptional regulator. Multiple transcript variants encoding several different isoforms have been found for this gene. [provided by RefSeq, Jul 2008]