

Product datasheet for **RG239779**

OSBP2 (NM_001282739) Human Tagged ORF Clone

Product data:

Product Type:	Expression Plasmids
Product Name:	OSBP2 (NM_001282739) Human Tagged ORF Clone
Tag:	TurboGFP
Symbol:	OSBP2
Synonyms:	HLM; ORP-4; ORP4; OSBPL1; OSBPL4
Mammalian Cell Selection:	Neomycin
Vector:	pCMV6-AC-GFP (PS100010)
E. coli Selection:	Ampicillin (100 ug/mL)



[View online »](#)

ORF Nucleotide Sequence:

>RG239779 representing NM_001282739.
 Blue=ORF Red=Cloning site Green=Tag(s)

```

GCTCGTTTAGTGAACCGTCAGAATTTTGTAAACGACTCACTATAGGGCGGCCGGGAATTCGTGACTG
GATCCGGTACCGAGGAGATCTGCCGCCCGGATCGCC
ATGGGGAAAGCGGCGGCTCCGAGCCGAGGCGGCGGTGTGGCGGCCGCTCCCGGGGCTCTCGTCGCTG
TTCACGGTTGTCCCTGCCTGTCTGTCCACACGCGCGCGGGCATGAGCGCTTCCACGTCGGCTCC
GGGCCGGAGCCCAAGCCCAAGCCCAAGCCCGTGCCTGACCGGAACCGGAGCGGGACCGCTGTAGAACAGGTG
TCGGAGGCAGTTTCGGAGGCAGTGCCAAGATCGGAACCTGTGTCCGAGACGACGCTGTAGCCGGAGCCA
GGGGCTGGGACGCATCGGAACCTGTGCAGGGGTGCGGGCGGGGTGAGAGTCAAGCTCAGGTGTAGGG
GCTGGGCCCTTACTAAGGCCGATCGGAGCCGCTCTCCCGGGCGGTGGGAGCGCGACCTTTCTCAGA
CCCGAGTCAGGATCGCTGCCAGCGTTAAAGCCCTGCCTCTTCTGCGACCAGGACAGGCGAAGACTCCT
CTTGGGGTTTCAAATGTCGGGGACTGGCACGACCTCCAGTGCCCACTGGCCTTACTGCCTCTGGACAGC
TTCGAGGGCTGGCTTCTCAAGTGGACCAACTATCTGAAGGGCTACCAGCGCCGCTGGTTCGTGCTGGGC
AATGGTTTGTCTTACTACAGAAATCAGGGTGAATGGCCACACGTGCCGTGGAACCATCAACCTG
TCCACCGCGCACATTGACACGGAGGACTCTTGTGGTATCTTGTGACCAGTGGGGCCAGGAGCTACCAC
CTCAAGGCCAGCTCAGAGGTGGACCGGCAGCAGTGGATCACCGCCCTGGAGCTGGCCAAGGCCAAGGCT
GTCCGCGTGATGAACACTCATTAGATGACTCTGGGGACGACGACGAGGCTACCACCCAGCCGACAAG
AGCGAGCTGCACCACACCTGAAGAATCTTCCCTGAAGTTAGATGACCTCAGCAGTGCATGACCTC
ATCGCCAAGCACGGCGCTGCACTCCAGCGCTCCCTGACAGAGCTGGACGGCTCAAGATCCCATCTGAG
AGTGGGGAGAAGTGAAGTGGTGAATGAGCGGGCCACCTCTCCGATCACATCCAATGCTATGATC
AACCCCTGCAGGGACTTCTTGAAGTACAGAGATACACAGTGGAAATGGCAGCGGGCACTGCAGTAT
GAGCAGGAGCAGCGCGTGCACCTGGAGGAAACCTTGGAGCAGTGGCGAAGCAGCACAACAGCCTGAG
CGGGCCTTCCACAGTGCCCTGGCCGGCCGACCCCTCCAAGAGCTTATTGAGGGAAGCCTTTG
ACTCCCAAGGAGAGGACAGTGAGGAAGATGAAGATACCGAGTACTTTGATGCCATGGAAGACTCCACA
TCCTTCATCACCGTGATCACCGAGGCCAAGGAAGACAGAAAAGCTGAAGGTAGCACCGGGACAAGTTC
GTGGACTGGAGCTCAGCAGACAAATGACTAGATGGTGCCTCGCTCGTCCCAAGGTTTATCCAAAGTC
AAGAGGCGAGTCCGATTCACCAACAGCCCAACTACAGCCTAACCTCTGGAGCATCATGAAGAAGTGC
ATCGGCCGGGAGCTCTCCAGGATCCCCATGCCGGTGAACCTCAATGAGCCCTGTCCATGCTCCAGCGG
CTGACAGAGGACCTGGAGTACCACCACCTGCTGGACAAGGCAGTGCACCTGCACAGCTCAGTGGAGCAG
ATGTGCCTGGTGGCCGCTTCTGTGTCTCCTACTCCACCACAGTGCACCGCATGCCAAGCCCTTC
AACCCCATGCTGGGGGAGACCTTCGAGCTGGACCCTCGACGACATGGGCTGCGCTCCCTCTGTGAG
CAGGTGAGCCACCACCCCTCAGCTGCGCACTACGTGTTCTCCAAGCATGGCTGGAGCCTCTGGCAG
GAGATCACCATCTCCAGCAAGTCCGGGGAAAATACATCTCCATCATGCCGCTAGGTGCCATCCACTTA
GAATCCAGGCCAGTGGGAATCACTACGTGTGGAGGAAGACCTCAACTGTTCAACAACATCATCGTG
GGCAAGCTCTGGATCGACCAGTCAAGGGACATCGAGATTGTGAACCATAAGACCAATGACCGGTGCCAG
CTGAAGTCTGCCCTACAGTACTTCTCCAAGAGGCAGCCCGAAGGTGACAGGAGTGGTGGAGTGC
AGCCAGGGCAAGGCCATTACGTGCTGTCCGGCTCGTGGGATGAACAAATGGAGTGTCCAAGGTGATG
CATAGCAGTCCCAGCAGCCCAAGCTCTGACGGGAAGCAGAAGACAGTGTACCAGACCTGTCCAGCCAAAG
CTGCTGTGGAAGAAGTACCCGCTGCCGGAGAACGCGGAGAACATGTACTACTTCTCAGAGCTGGCCCTG
ACCCTCAACGAGCACGAGGAGGGCGTAGCGCAACCGACAGCCGCTGCGGCCGACAGCGGCTGATG
GAGAAGGGCCGTTGGGACGAGGCCAATACCGAGAAGCAGCGGCTGGAGGAGAAGCAGCGCTGTCCGGG
CGCCGGCGGCTGGAGGCTGCGGGCCGGGACGAGCTGCAGCTCGGAGGAAGAGAAGGAGGCGGATGCC
TACACGCCACTGTGTTTGAAGAAGGCTGGATCCGCTGACCGGGGAGATGGCCTGTGTGTACAAGGGC
GGCTACTGGGAGGCCAAGGAGAAGCAAGACTGGCATATGTCCCAACATCTTC
ACGCGTACGCGGCCGCTCGAG - GFP Tag - GTTTAAAC
  
```

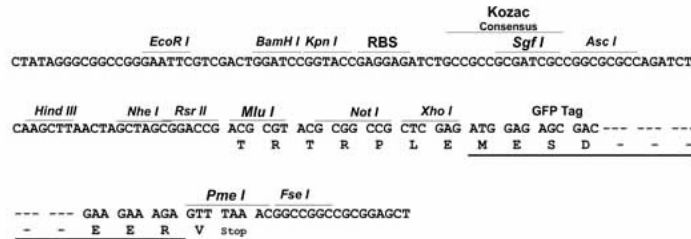
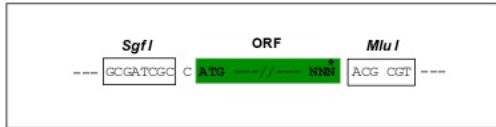
Protein Sequence: >Peptide sequence encoded by RG239779
 Blue=ORF Red=Cloning site Green=Tag(s)

MGKAAAPSRGGGCGGRSRGLSSLFTVVPCLSCHTAAPGMSASTSGSGPEPKPQPVPPEPERGPLSEQV
 SEAVSEAVPRSEPVSETTSEPEPGAGQPSSELLQGSRPGSESSVGVGAGPFTKAASEPLSRAVGSATFLR
 PESGSLPALKPLPLLRPGQAKTPLGVMSGTGTSSAPLALLPLDSFEGWLLKWTNYLKGYQRRWFLG
 NGLLSYYRNQGEAHTCRGTINLSTAHIDTEDSCGILLTSGARSYHLKASSEVDRQQWITALELAKAKA
 VRVMNTHSDDSGDDDEATTPADKSELHHTLKNLSLKLDDLSTCNDLIAKHGAALQRSLTELDGLKIPSE
 SGEKLVVNERATLFRITSNAMINACRDFLELAEIHSRKWQRALQYEQEQRVHLEETIEQLAKQHNSLE
 RAFHSAPGRPANPSKSFIEGSLLTPKGEDSEEDTEYFDAMEDSTSFITVITEAKEDRKAEGSTGTSS
 VDSSADNVLDGASLVPKGSSKVKRRVRIPNKNPNSLNLWSIMKNCIGRELSRIPMPVNFNEPLSMLQR
 LTEDLEYHLLDKAVHCTSSVEQMCLVAAFVSSYSTTVHRIAKPFNMLGETFELDRDDMGLRSLCE
 QVSHPPSAAHYVFSKHGWSLWQEITISSKFRGKYISIMPLGAIHLEFQASGNHYVWRKSTSTVHNIIV
 GKLWIDQSGDIEIVNHKTNDRCQLKFLPYSYFSKEAARKVTGVVSDSQGAHYVLSGSWDEQMECSKVM
 HSSPSSSSDGKQKTVYQTL SAKLLWKKYPLPENAENMYF SELALTLNEHEEGVAPTDSRLRPDQRLM
 EKGRWDEANTEKQRLEEKQRLSRRRREACGPGSSCSSEEEKEADAYTPLWFEKRLDPLTGEMACVYKG
 GYWEAKEKQDWHMCPNIF
 TRTRPLEMESDESGLPAMEIECRITGTLNGVEFELVGGEGTPEQGRMTNKMSTKGALTFSPYLLSHV
 MGYGFYHFGTYPYSGYENPFLHAINNGGYNTRIEKYEDGGVLHVSFSYRYEAGRVIGDFKVMGTGFPEP
 SVIFTDKIIRSNATVEHLHPMGDNDLDGSFTRTFSLRDGGYSSVVDSDSHMHFKSAIHPSILQNGGPMFA
 FRRVEEDHSNTELGIVEYQHAFKTPDADAGEERV

Restriction Sites: Sgfl-MluI

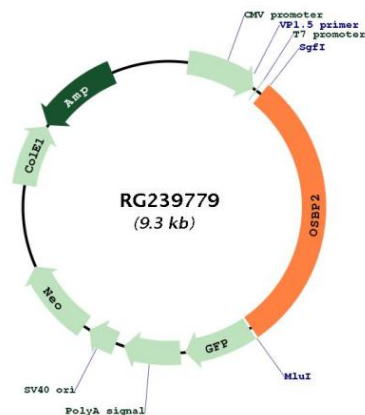
Cloning Scheme:

Cloning sites used for ORF Shuttling:



ACCN:	NM_001282739
ORF Size:	2745 bp
OTI Disclaimer:	The molecular sequence of this clone aligns with the gene accession number as a point of reference only. However, individual transcript sequences of the same gene can differ through naturally occurring variations (e.g. polymorphisms), each with its own valid existence. This clone is substantially in agreement with the reference, but a complete review of all prevailing variants is recommended prior to use. More info
OTI Annotation:	This clone was engineered to express the complete ORF with an expression tag. Expression varies depending on the nature of the gene.
Components:	The ORF clone is ion-exchange column purified and shipped in a 2D barcoded Matrix tube containing 10ug of transfection-ready, dried plasmid DNA (reconstitute with 100 ul of water).
RefSeq:	NM_001282739.2
RefSeq Size:	4346 bp
RefSeq ORF:	2748 bp
Locus ID:	23762
UniProt ID:	Q969R2
Cytogenetics:	22q12.2
MW:	101.6 kDa
Gene Summary:	The protein encoded by this gene contains a pleckstrin homology (PH) domain and an oxysterol-binding region. It binds oxysterols such as 7-ketocholesterol and may inhibit their cytotoxicity. Alternatively spliced transcript variants encoding multiple isoforms have been observed for this gene. [provided by RefSeq, Sep 2013]

Product images:



Circular map for RG239779