

Product datasheet for **RG239776**

Nephrocystin 4 (NPHP4) (NM_001291594) Human Tagged ORF Clone

Product data:

Product Type:	Expression Plasmids
Product Name:	Nephrocystin 4 (NPHP4) (NM_001291594) Human Tagged ORF Clone
Tag:	TurboGFP
Symbol:	Nephrocystin 4
Synonyms:	POC10; SLSN4
Mammalian Cell Selection:	Neomycin
Vector:	pCMV6-AC-GFP (PS100010)
E. coli Selection:	Ampicillin (100 ug/mL)



[View online »](#)

ORF Nucleotide Sequence:

>RG239776 representing NM_001291594.
 Blue=ORF Red=Cloning site Green=Tag(s)

```
GCTCGTTAGTGAACCGTCAGAATTTTGTAAACGACTCACTATAGGGCGGCCGGGAATTCGTGACTG
GATCCGGTACCGAGGAGATCTGCCGCCCGCATCGCC
ATGCACCCACGGAGCCTGTCAGTGGCCCCAAAGTGGAGCGGCCCTCCAGGAAACCACCCACGTCCC
CTTCGACAGGAGTCCCGTTGGAGGCCGTATCTCCACCTGGAAGCCGACCTGAGCCAGACCTCCCTG
GTCCTGGAACATCCATTGCCGAACAGTTACAGGAGCTGCCGTTACGCCCTTTCATGCCCTATTGTT
GTGGGAACCCAGACCAGGAGCTCTGCAGGGCAGCCCTCGAGAGCCTCCATGGTGTCTCTGCAGTCTCC
GGCTTTCCCGAGATTCTGGATGCCAATAAACAGCCAGCCGAGGCTGTGAGCGCTACAGAACCTGTGACG
TTAAACCCTCAGAAGGAAGAATCAGATTGTCTACAAGCAACGAGATGGTGTACAGTTTCTTGCCTTT
AGCAGAGTGGCCAGGACTGCCGAGGAACATCATGGCCAAAGACTGTGTATTTACCTTCCAGTTCTAC
CGCTTCCCACCCGCAACGACGCCACGACTGCAGCTGGTCCAGCTGGATGAGGCCGGCCAGCCAGCTCT
GGCGCCCTGACCCACATCCTCGTGCCTGTGAGCAGAGATGGCACCTTTGATGCTGGGTCTCTGGCTTC
CAGCTGAGGTACATGGTGGGCCCTGGGTTCTGAAGCCAGGTGAGCGGCCGCTGCTTTGCCGCTACCTG
GCCGTGCAGACCTGCAGATTGACGTCTGGGACGGAGACTCCCTGCTGCTCATCGGATCTGCTGCCGTC
CAGATGAAGCATCTCTCCGCCAAGGCCGGCCGGCTGTGCAGGCCTCCCACGAGCTTGAGGTCTGGCA
ACTGAATACGAGCAGGACAACATGGTGGTGTGAGTGGAGACATGCTGGGTTTGGCCGCTCAAGCCATC
GGCGTCCACTCGGTGGTGAAGGGCCGGCTGCACCTGACTTTGGCCAACGTGGGTACCCGTGTGAACAG
AAAGTGAGAGGTTGTAGCACATTGCCACCGTCCAGATCTCGGGTTCATCTCAAACGATGGAGCCAGCCG
TTCTCTGGAGGCAGCCTCCTCACGACTGGAAGCTCAAGGCCAAAACAGTGGTGAAGCACAAGAAGCTG
GGGACGTGGACAGTGTGCTGGTGCATGTCTACTGACCCATGCCCGCAGGGCAAGGGCCAGGAC
GTCAGCCGCGAGTCCGATGCCACCCGAGCGTAAGCTGGAGCGGATGAGGTCTGTGCCGCTGCAGGAG
GCCGGGGGAGACTTGGGCCGGCCGGGACGAGCGTGTGGCGCAGCAGAGCGTCCGCACACAGCATTTG
CGGACCTACAGGTTCATCGCCGCTACCGGGAACGCACGAAGGCCGAGAGCATCGCCAGCCTGCTGAGC
CTGGCCATCACCACGGAGCACACGCTCCACGCCAGCTGGGGTTCGCGGATTTTGTGTTTGTGCTT
AAGAACCCCAACAACACACAGCACACGGTGTGAGTGGAGATCGACAACCCGAGCTCAGCGTCATCGTG
GACAGTCAAGAGTGGAGGACTTCAAGGGTGTGCTGGCTGCACACCCGGTGGAGGAGGACATGTTT
CACCTGCTGGCAGCCTGGCCCCCAGCTCTACCTGCGCCCCACGAGACCGCCACGTCCCCTTCAAG
TTCCAGAGCTTCTGTCAGGGCAGCTGGCCATGGTGCAGGCCTCTCTGGGTTGAGCAACGAGAAGGGC
ATGGACCGGTGTACCTTGAAGTCCAGCGCAGTGGCCACTAACACGCCAAGGTCTTGTCCGAGCG
AGTGGTGGCAAGCCATCGCCGTGCTCTGCCTGACTGTGGAGCTGCAGCCCCACGTGGTGGACCAGGTC
TTCCGCTTCTATACCCGGAGCTCTCTTCTGAAGAAGGCCATCCGCTGCCGCCCTGGCACACATTT
CCAGGTGCTCCGGTGGGAATGCTTGGTGTGAGGACCCCCAGTCCATGTTTCGCTGCAGCGACCCGAACGTC
ATCTGTGAGACCCAGAATGTGGGCCCGGGGAACCACGGGACATATTTCTGAAGTGGCCAGTGGTCCA
AGCCCGGAGATCAAAGACTTCTTTGTATCATTACTCGGATCGTGGCTGGCGACCCACACAGACG
TGGCAGGTCTACCTCCACTCCCTGCAGCGCGTGGATGTCTCTGCGTGCAGGCCAGCTGACCCGCTG
TCCCTTGTCTTCCGGGGACACAGACAGTGAAGAAAGTGAAGCTTTACCTCTCATCCCCAGGAGCTG
AAGACAGACCCCAAGGTGTCTTCTGTGCTGCCGCTCGTGGGTGCAGGACCTGCATGTTGGCTGAGG
CCCTTAGGGCCGACGCCGCTTGTCCATCTCAACCTGGTGGAGTGGATTGCCACCAGCTGGTGGCC
TCTGGCTCGTGTGCTCTGCTGCCAGCCGCTCATCTCAAGGCCTTTGAGATCATGTTGGCTGCG
GGCAAGGGAAGGGTGTCAACAAGAGGATCACCTACACCAACCCCTACCCCTCCCGGAGGACATTCCAC
CTGCACAGCGACCCCGGAGCTGCTGCGGTTACAGAGGACTCCTTCCAGGTCCGGGGTGGAGAGACC
TACACCATCGGCTTGCAGTTTGCCTAGTCAGAGAGTGGGTGAGGAGGAGATCTGATCTACATCAAT
GACCATGAGGACAAAACGAAGAGGCATTTTGCCTGAAGGTCATCTACCAG
ACGCGTACGCGGCCGCTCGAG - GFP Tag - GTTTAAAC
```

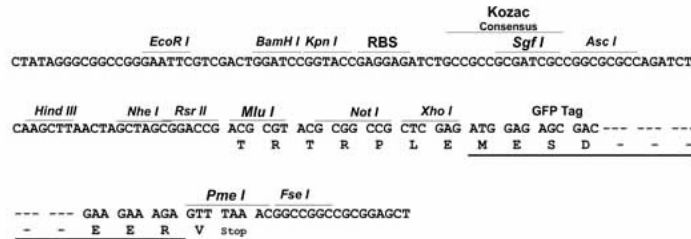
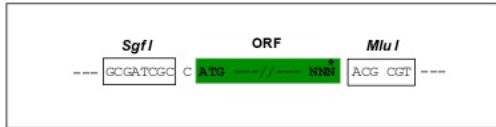
Protein Sequence: >Peptide sequence encoded by RG239776
 Blue=ORF Red=Cloning site Green=Tag(s)

MHPRSLSVAPKWSGGLPGNHRPLRQEFPLEAGISHLEADLSQTSLVLETSLAEQLQELPFTPLHAPIV
 VGTQTRSSAGQPSRASMVLLQSSGFPEILDANKQPAEAVSATEPVTFNPQKEESDCLQSNEMVLQFLAF
 SRVAQDCRGT SWPKTVYFTFQFYRFPATTPRLQLVQLDEAGQPSGAL THILVPVSRDGTDFDAGSPGF
 QLRVMVGPGLKPGERRCFARYLAVQTLQIDVWDGDSLLLI GSAAVQMKHLLRQGRPAVQASHELEVVA
 TEYEQDNM VVSGDMLGFRVKPIGVHSVVKGRHLHLTLANVGHPCQKVRGCSTLPPSRSRVSI SNDGASR
 FSGGSLLTTGSSRRKHVYQAQKLADVDSELAAMLLTHARQKGPQDVSRES DATRRRKLERMRSVRLQE
 AGGDLGRRGTSVLAQQSVRTQHLRDLQVIAAYRERTKAESIASLLSLAITTEHTLHATLGVAEFFEVL
 KNPHNTQHTVTVEIDNPEL SVIVDSQEWRFKGAAGLHTPVEEDMFHLRGLAPQLYLRPHETAHVPFK
 FQSF SAGQLAMVQAS PGLSNEKGM DAVSPWKSSAVPTKHAKVLF RASGGKPIAVLCLTVELQPHVVDQV
 FRFYHPELSFLKKAIRLPPWHTFPGAPVGM LGEDPPVHVRCSDPNVICETQNVGPGEP RDI FLKVASGP
 SPEIKDFVVIISDRWLATPTQTWQVYLHSLQRVDVSCVAGQL TRLSLVL RGTQTVRKVRAFT SHPQEL
 KTDPKGVFVLP PRGVQDLHVGVRPLRAGSRFVHLNLVDVDCHQLVASWL VCLCCRQPLISKAFEIMLAA
 GEGKGVNKRITYN PYP SRRTFHLHSDHPELLRFREDSFQVGGGETYTI GLQFAPSQRVGE EELIYIN
 DHEDKNEEAFCKVIYQ
 TRTRPLEMESDESGLPAMEIECRITGTLNGVEFELVGGEGTPEQGRMTNKMSTKGALTFSPYLLSHV
 MGYGFYHFGTYP SGYENPFLHAINNGGYNTRIEKYEDGGVLHVSFSYRYEAGRVIGDFKVMGTGFPE
 SVIFTDKIIRSNATVEHLHPMGDNDLDGSFTRTFSLRDGGYSSVVD SHMHFKSAIHP SILQNGGPMFA
 FRRVEEDHSNTELGIVEYQHAFKTPDADAGEERV

Restriction Sites: SgfI-MluI

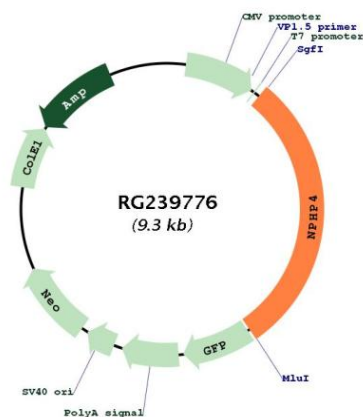
Cloning Scheme:

Cloning sites used for ORF Shutting:



ACCN:	NM_001291594
ORF Size:	2742 bp
OTI Disclaimer:	The molecular sequence of this clone aligns with the gene accession number as a point of reference only. However, individual transcript sequences of the same gene can differ through naturally occurring variations (e.g. polymorphisms), each with its own valid existence. This clone is substantially in agreement with the reference, but a complete review of all prevailing variants is recommended prior to use. More info
OTI Annotation:	This clone was engineered to express the complete ORF with an expression tag. Expression varies depending on the nature of the gene.
Components:	The ORF clone is ion-exchange column purified and shipped in a 2D barcoded Matrix tube containing 10ug of transfection-ready, dried plasmid DNA (reconstitute with 100 ul of water).
RefSeq:	NM_001291594.2
RefSeq Size:	4533 bp
RefSeq ORF:	2745 bp
Locus ID:	261734
UniProt ID:	O75161
Cytogenetics:	1p36.31
MW:	101.5 kDa
Gene Summary:	This gene encodes a protein involved in renal tubular development and function. This protein interacts with nephrocystin, and belongs to a multifunctional complex that is localized to actin- and microtubule-based structures. Mutations in this gene are associated with nephronophthisis type 4, a renal disease, and with Senior-Loken syndrome type 4, a combination of nephronophthisis and retinitis pigmentosa. Alternative splicing results in multiple transcript variants. [provided by RefSeq, Apr 2014]

Product images:



Circular map for RG239776

