

Product datasheet for **RG239774**

CCDC46 (CEP112) (NM_001302891) Human Tagged ORF Clone

Product data:

Product Type:	Expression Plasmids
Product Name:	CCDC46 (CEP112) (NM_001302891) Human Tagged ORF Clone
Tag:	TurboGFP
Symbol:	CCDC46
Synonyms:	CCDC46; MACOCO; SPGF44
Mammalian Cell Selection:	Neomycin
Vector:	pCMV6-AC-GFP (PS100010)
E. coli Selection:	Ampicillin (100 ug/mL)



[View online »](#)

ORF Nucleotide Sequence:

>RG239774 representing NM_001302891.
 Blue=ORF Red=Cloning site Green=Tag(s)

```
GCTCGTTTAGTGAACCGTCAGAATTTTGTAAACGACTCACTATAGGGCGGCCGGGAATTCGTGACTG
GATCCGGTACCGAGGAGATCTGCCGCCCGCATCGCC
ATGGAAGTGGGAAGTGAAGAAGAAAAATGGGAGAAGCTGGATGCAGAATTTGATCACTTTGTGGTTGAT
ATGAAGCCCTTTGTTCTAAAATTACCTCATAGGCAGAACGGCAGAGGTGTGCTCTTTGGATTAGAAG
CTGTGCCAACCTTCAGGAACAGGTGCAGGAATAATGGGGAGGAAGAATCGGAACCTGTATGCAAAAATTG
TTATTGCATATGCTTAAACGAGGTGCGCTTGAAGGCCCTTTACACACCGACCTGAACCCGGGACTA
AAAATTCTACCTTCATACATGTCCATCTATTTTGTGAACCAAATCCAGCACGAGCAAAAAGTTCAAGC
CCAGAGGGATTACCAGCCTGGTACTGGGTGAGCTGGAGACAAGTGAACACAAAATTAATGAATCATGG
AAACTCTCTTCTGGAGAAGATAACACTTTAGTACAGTCGCCAACTGATGTCTACAGCAGGGAACAGTAC
ACTGGGAAGCTCCGAGTGAGATCACACTCTTGAGTCCAACCTCACAGAGAAGATGGACAAAATATTACC
CCAAAGATTTGTGAAGTTTATTCGAAAAATCTCCTGTTTCTTTGGATGATAGTGACATTGAAGCTCGC
CTTAATAGTTGGAATCTTGGGCTGGACATGAAAACAAAATGATGGAAGCTAAATTTTCATGAAGAAAAG
CTTAAACTGCAACAGAAACATGATGCTGATGTTTCAAGAAGATTTTAGAAAGAAAGAATAATGAAATAGAA
GAACTGAAAACCTTATACAGGAGTAAACAACATGAAACTGAAGAGACTATTAGAAAAGCTTAAAAAGAAA
GTTCAGACACTGATACGTGACTGTCAAGTTATCAGAGAGACTAAAGAAGACCAGATTGCAGAGCTGAAA
AAGATATGTGAACAAAGTACGGAATCTCTAAAATGACTGGGAAAAAAGCTTCACAATGCTGTAGCA
GAAATGGAACAGGAAAAGTTTGATCTTCAAAGCAACACACTGAAAACATTCAGAATTGCTTGAGGAT
ACAAATGTGCGTCTGAATAAAAATGGAGAGTGAATACATGGCGCAAACACAGTCCACAAACCACATGATC
AAAGAAGTGGAGGCCCGTGTCCAGCAGCTGACTGGAGAAGCAGAGAACAGTAATTTACAGAGGCAGAAA
TTAATTCAGAAAAAGCAGAAGCTTGAAGAGATGTTACCAGATAACGTGTAGTGAATTACAAGAAAGTAAAG
GCAAGGCCGTAACACACTGCATAAAGAGAAGGACCATCTTGTAATGATTATGAGCAAAAACATGAAACTG
TTACAAAACCAAATATGATGCTGATATAAACCTTCTAAAACAAGAACATGCTCTTTTCAGCTTCTAAGGCA
TCTAGTATGATTGAAGAATTAGAGCAGAAATGTCTGTCAATTAACAACAGCAGTTACAGGAATCAGAACTT
CAAAGAAAGCAACAACTAAGGGATCAAGAAAAAAGTTTCAGATGGAGAAAAGTCAATTAACAACACATC
TATGAAAAAAGGCTCATGACTTGCAGAGTGAAGTTGATAAAGGAAAAGAGATACTCAAAGAAAATT
CATAAATTTGAGGAAGCTTTGAAGGAAAAAGAGGAGCAGCTAACTCGTGTGACTGAAGTTCAGAGGTTG
CAGGCCACAGCAGGATGCCGCTCTGGAAGAGTTTAAAGCGCAGGTGGAACCTGAACTCAGAGAAAGTC
TATGCTGAAATGAAAGAGCAGATGGAAAAAGTGGAGGCAGATCTAACTAGATCCAATCTCTTCGTGAG
AAACAATCAAAGGAGTTTTTATGGCAACTGGAGGACATCAGACAGCGGTATGAACAACAGATAGTAGAG
CTGAAGCTGGAGCATGAACAGGAGAAGACGCACCTATTACAGCAGCATAACGCAGAGAAGGATAGCCTA
GTCCGAGACCATGAACGGGAAAATGAAAACCTGGAAAAACAGCTTCGCGCTGCCAATATGGAGCACGAA
AATCAAATTCAGGAGTTCAAGAAACGAGATGCACAGGTTATTGCCGACATGGAGGCCAGGTTCAACAAG
TTGAGAGAAGAATTGATCAATGTGAAGTACACAGCGAAACAGCAGCTGGTAGAGCTTGGTCTTCTCGT
GAAGAGGAAAAGCAAAGGGCTACAAGGGAACATGAGATTGTCGTCATAAACTGAAGGCTGAATCAGAA
AAGATGAAAATAGAGCTGAAAAAGACTCATGCTGCTGAGACAGAGATGACACTGGAAAAGGCCAACAGC
AAGCTGAAGCAGATTGAGAAGGAATACACTCAGAAGCTTGCCAAATCTTCACAGATCATAGCAGAAGCTT
CAGACAACCATTTCTCTCTGAAAGAAGAGAACAGCCAGCAGCAGCTTGCTGCAGAAAAGCGGCTCCAG
GATGTTAGACAAAAGTTTGAAGATGAGAAGAAGCAGCTGATTAGAGATAATGACCAAGCAATCAAGGTT
TTACAAGATGAATTAGAAAACCGTTCTAATCAGGTGCGATGTGCAGAGAAAAAATTAACAACAAAAGAA
TTGGAGTCACAGGAACAGATAACTTACATACGACAAGAATATGAAAACAAAATGAAAGGATTGATGCCA
GCATCCCTAAGACAAGAAGTGAAGACACCATTTCCTCCCTAAAATCACAGGTTAATTTTCTGCAAAAAG
AGAGCTTCCATCCTTCAGGAAGAAGTACTACATATCAAGGCAGAAGG
ACGCGTACGCGGCCGCTCGAG - GFP Tag - GTTTAAAC
```

Protein Sequence: >Peptide sequence encoded by RG239774
 Blue=ORF Red=Cloning site Green=Tag(s)

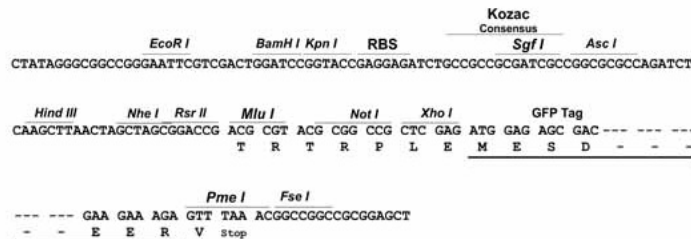
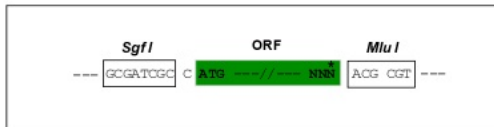
```

MEVGSEEEKWEKLD AEFDFVVDMPFVLKLP HRTERQRCALWIRKLCEPSGTGAGIMGRKNRNL YAKL
LLHMLKRGALGPFTHRPEPGLKILPSYMSIYFDEPNPARAKGSSPEGLPAWVLELETSEHKLNESW
KLSSGEDNTLVQSPTDVYSREQYTGKLRVRSLSLSPHREDGQNI TPKICEVYSKSPVSLDSDIEAR
LNSWNLGLDMKTKMMEAKFHEEKLLKQQKHDADVQKILERKNNEIEELKTLYRSKQHETEETIRKLEKK
VQTLIRDQVIRETKEDQIAELKKICEQSTESLNDWEKKLHNAVAEME QEKFDLQKQHTENIQELLEDD
TNVRLNKMES EYMAQTQSTNHMIKELEARVQQLTGEAENSLQRQKLIQEKAELERCYQITCSELQEVK
ARRNTLHKEKDHLVNDYEQNMKLLQTKYDADINLLKQEHALSASKASSMIEELEQNVQQLKQQLQESSEL
QRKQQLRDQENKFQMEKSHLKHIEYKKAHDLQSELDKGKEDTQKKIHKFEEALKEKEEQ LTRVTEVQRL
QAQQADAAL EEFKQVELNSEKVYAEMKEQMEKVEADL TRSKSLREKQSKEFLWQLEDIRQRYEQQIVE
LKLEHEQEKT HLLQQHNAEKDSLVRDHEREIENLEKQLRAANMEHENIQEFKKRDAQVIADMEAQVHK
LREELINVNSQRKQQLVELGLLREEEKQRATREHEIVVNKLKAESEKMKIELKKTAAE TEMTLEKANS
KLKQIEKEYTQKLAKSSQIIAELQTTISSLKEENSQQQLAAERRLQDVRQKFEDEKKQLIRDNDQAIKV
LQDELENRSNQVRC AEKKLQHKEL ESQEITYIRQEYETKLKGLMPASLRQELEDTISSLKSQVNF LQK
RASILQEELTTYQGRR
TRTRPLEMESDESGLPAMEIECRITGTLNGVEFELVGGEGTPEQGRMTNKMSTKGALTFSPYLLSHV
MGYGFYHFGTYP SGYENPFLHAINNGGYTNTRIEKYEDGGVLHVFSYRYEAGRVIGDFKVMGTGFPED
SVIFTDKIIRSNATVEHLHPMGDNDLDGSFTRTFSLRDGGYSSVVD SHMHFKSAIHPSILQNGGPMFA
FRRVEEDHSNTELGIVEYQHAFKTPDADAGEERV
  
```

Restriction Sites: SgfI-MluI

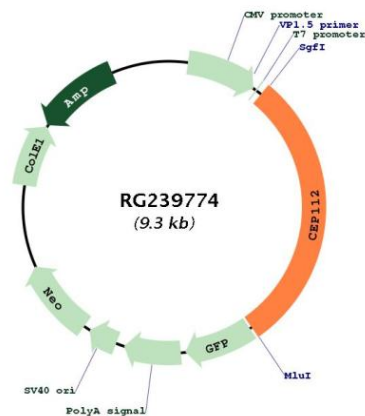
Cloning Scheme:

Cloning sites used for ORF Shuttling:



ACCN:	NM_001302891
ORF Size:	2739 bp
OTI Disclaimer:	The molecular sequence of this clone aligns with the gene accession number as a point of reference only. However, individual transcript sequences of the same gene can differ through naturally occurring variations (e.g. polymorphisms), each with its own valid existence. This clone is substantially in agreement with the reference, but a complete review of all prevailing variants is recommended prior to use. More info
OTI Annotation:	This clone was engineered to express the complete ORF with an expression tag. Expression varies depending on the nature of the gene.
Components:	The ORF clone is ion-exchange column purified and shipped in a 2D barcoded Matrix tube containing 10ug of transfection-ready, dried plasmid DNA (reconstitute with 100 ul of water).
RefSeq:	NM_001302891.3
RefSeq Size:	3399 bp
RefSeq ORF:	2742 bp
Locus ID:	201134
Cytogenetics:	17q24.1
MW:	108.1 kDa
Gene Summary:	This gene encodes a coiled-coil domain containing protein that belongs to the cell division control protein 42 effector protein family. In neurons, it localizes to the cytoplasm of dendrites and is also enriched in the nucleus where it interacts with the RNA polymerase III transcriptional repressor Maf1 to regulate gamma-aminobutyric acid A receptor surface expression. In addition, the protein has been identified as a component of the human centrosome. Alternative splicing results in multiple transcript variants. [provided by RefSeq, Nov 2014]

Product images:



Circular map for RG239774